

O.D.O.T. DISTRICT 2 SURVEY OFFICE (USE ONLY)

PERSONNEL

REFERENCE NO. 21 B

SHEET 28 OF 30

NOTES MILLER DATE 12/28/23

H.C. RHOADES WEATHER RAIN

R.C. MILLER TEMP. 44°

ROUTE SR 587

COUNTY SENECA

TOWNSHIP BIG SPRINGS

SECTION 2

DWG BY RHOADES PID PAVING TRAIN

T 1 N R 13 E

TYPE MONUMENT MAG NAIL

ON SURFACE - ~~BELOW~~ ON

OFFSET ☐ PAVEMENT 2.1' LT : ~~RT~~

13.6' TO RT EDGE PAVEMENT

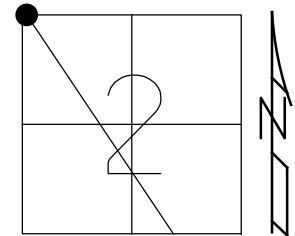
STATION: 384+07

HORIZ.DATUM: NAD83 2011

GEOID: NAVD88 2018

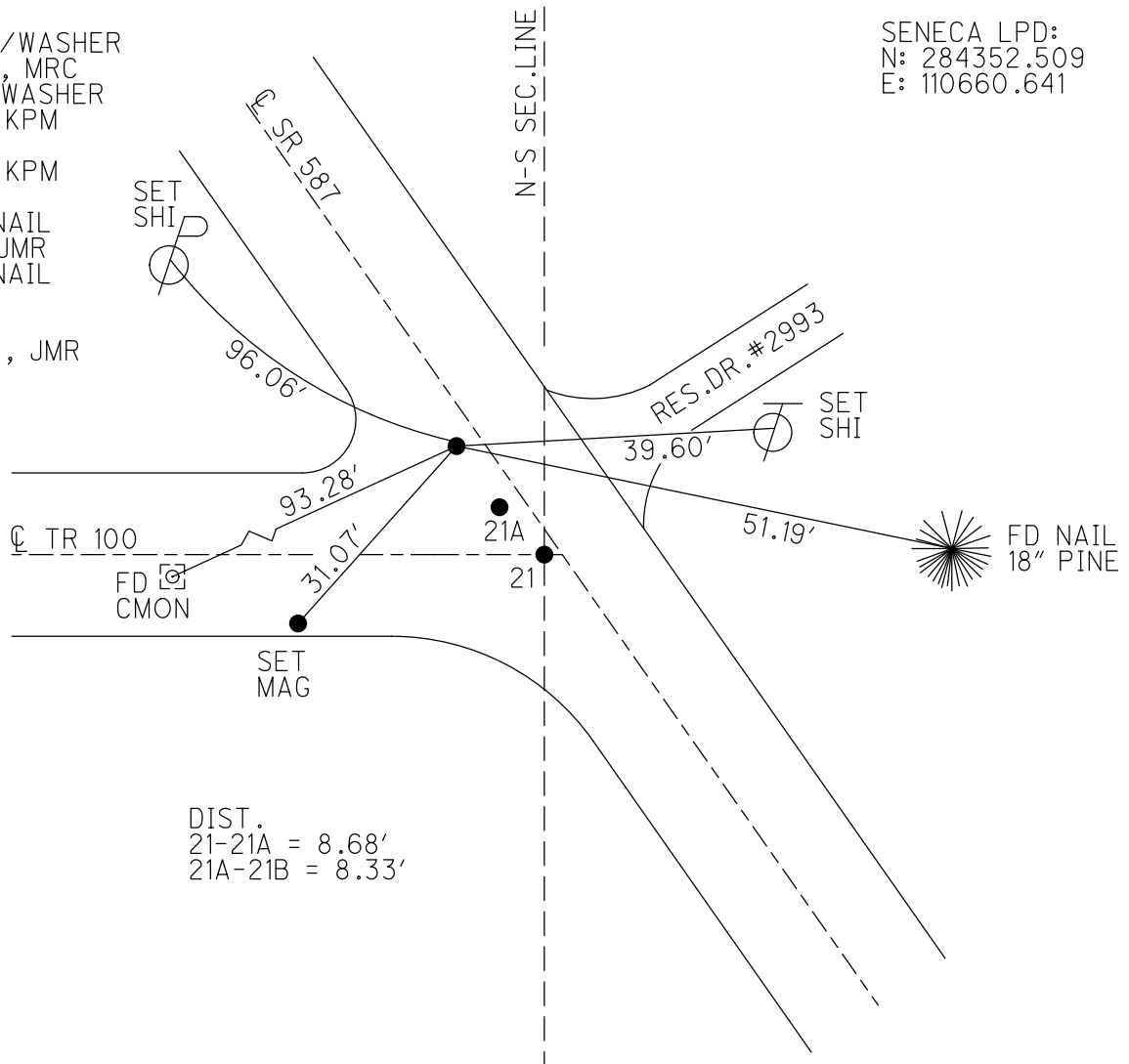
GRID: NORTHING: 515969.172

EASTING: 1735933.424



RECORD:
 SET P.K./WASHER
 10/13/98, MRC
 FD P.K./WASHER
 5/25/11, KPM
 REFC21
 5/26/11, KPM
 9/12/11
 FD MAG NAIL
 7/2/21, JMR
 FD MAG NAIL
 REF21B
 9/15/23.
 12/28/23, JMR

SENECA LPD:
 N: 284352.509
 E: 110660.641



O.D.O.T. DISTRICT 2 SURVEY OFFICE (USE ONLY)

PERSONNEL

REFERENCE NO. 21 B

SHEET 28 OF 30

NOTES FINGER DATE 5/25/11
 H.C. MOSER WEATHER SUNNY
 R.C. LUMBREZER TEMP. 60°

ROUTE SR 587
 COUNTY SENECA
 TOWNSHIP BIG SPRINGS
 SECTION 2
 T 1 N R 13 E

DWG BY NIESE PID PAVE TRAIN

TYPE MONUMENT MAG NAIL

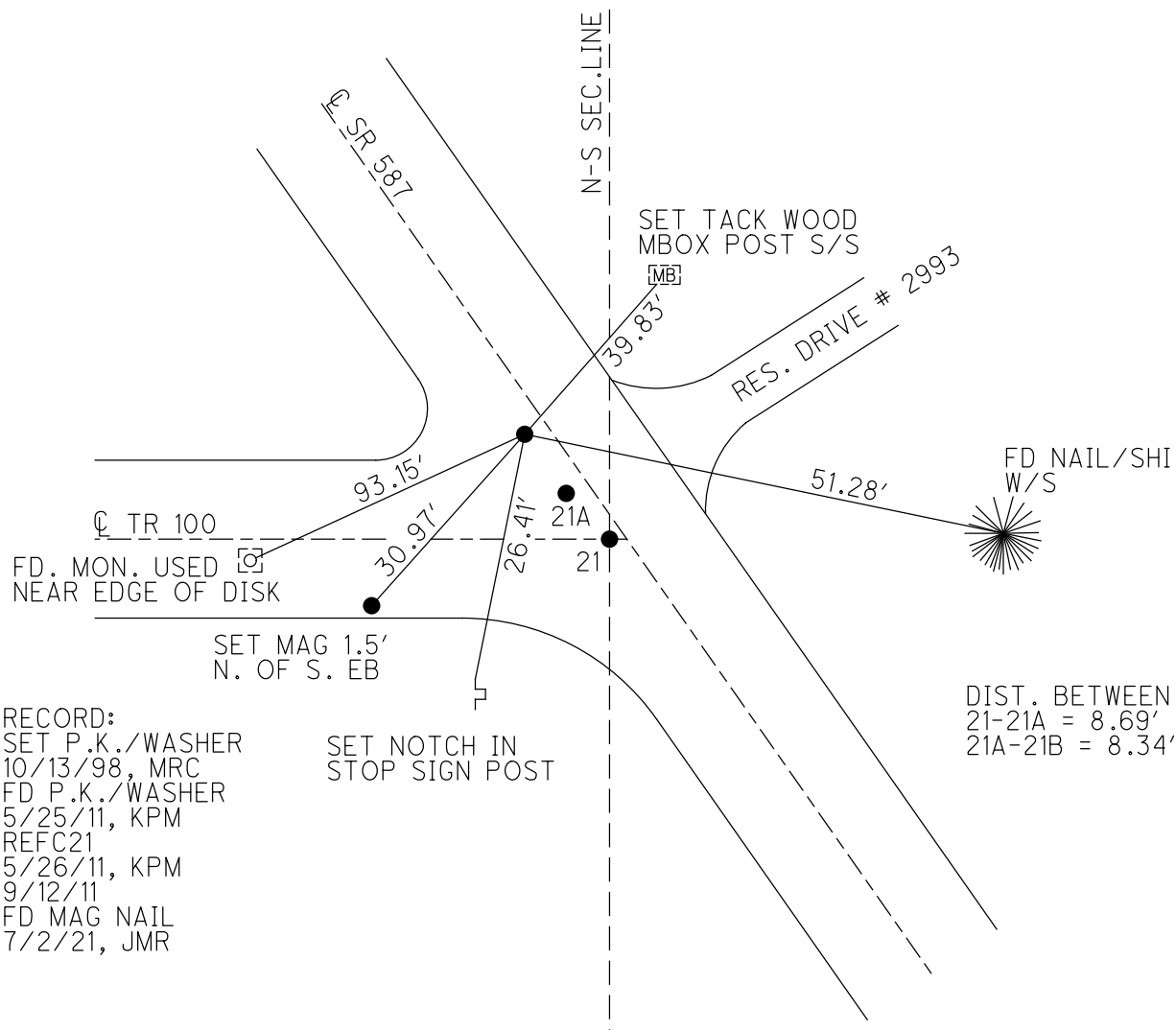
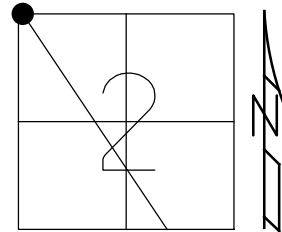
ON SURFACE - ~~BELOW~~ ON

OFFSET ☐ PAVEMENT 2.1' LT : ~~RT~~
13.6' TO RT EDGE PAVEMENT

STATION: 384+07

HORIZ.DATUM: NAD83 GEOID: 2009

GRID: NORTHING: 515969.173 EASTING: 1735933.452



RECORD:
 SET P.K./WASHER
 10/13/98, MRC
 FD P.K./WASHER
 5/25/11, KPM
 REFC21
 5/26/11, KPM
 9/12/11
 FD MAG NAIL
 7/2/21, JMR

O.D.O.T. DISTRICT 2 SURVEY OFFICE (USE ONLY)

PERSONNEL

REFERENCE NO. 21 B

SHEET 28 OF 30

NOTES FINGER DATE 5/25/11

H.C. MOSER WEATHER SUNNY

R.C. LUMBREZER TEMP. 60°

ROUTE SR 587

COUNTY SENECA

TOWNSHIP BIG SPRINGS

SECTION 2

DWG BY NIESE PID PAVE TRAIN

T 1 N R 13 E

TYPE MONUMENT MAG NAIL

ON SURFACE - ~~BELOW~~ ON

OFFSET 13.6' TO RT EDGE PAVEMENT

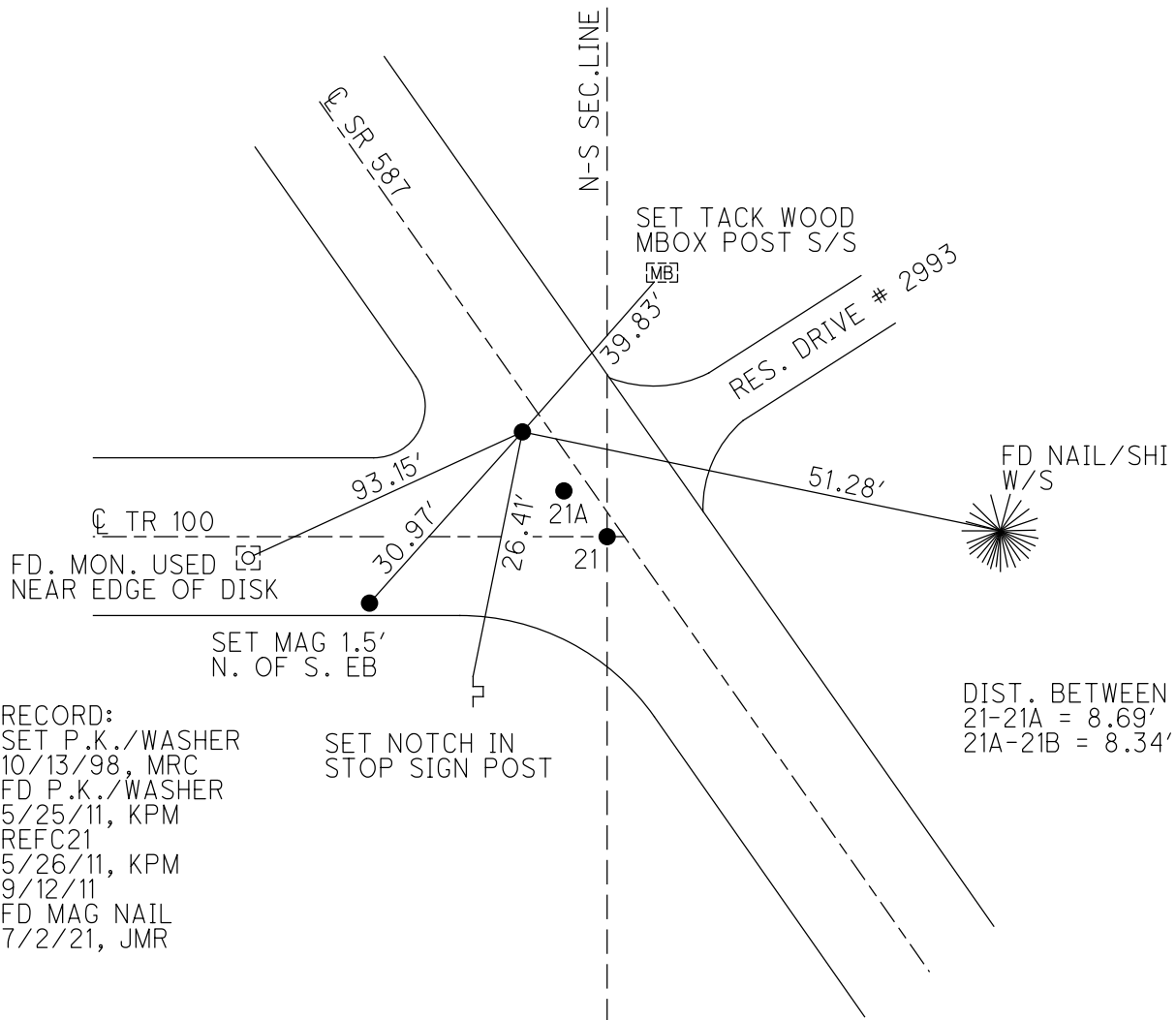
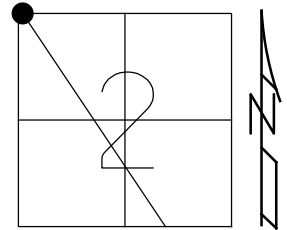
STATION: 384+07

HORIZ.DATUM: _____

GEOID: _____

GRID: NORTHING: 515969.173

EASTING: 1735933.452

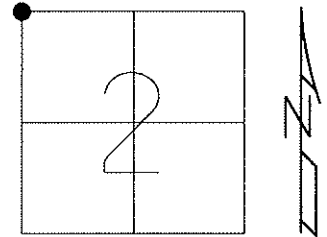


RECORD:
 SET P.K./WASHER
 10/13/98, MRC
 FD P.K./WASHER
 5/25/11, KPM
 REFC21
 5/26/11, KPM
 9/12/11
 FD MAG NAIL
 7/2/21, JMR

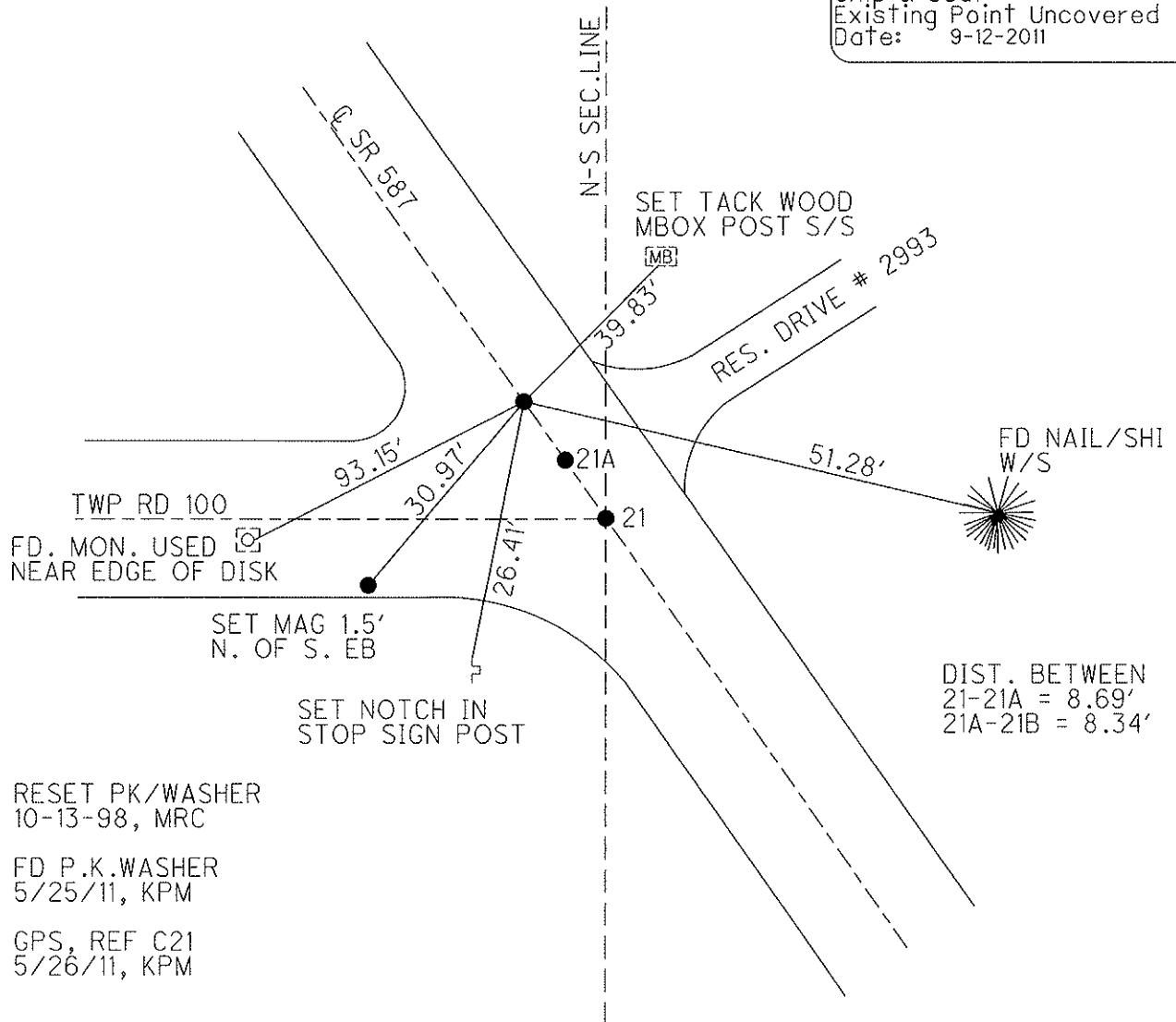
O.D.O.T. DISTRICT 2 SURVEY OFFICE

PERSONNEL	REFERENCE NO. <u>21 B</u>	SHEET <u>27</u> OF <u>30</u>
NOTES <u>FINGER</u>	DATE <u>5-25-11</u>	ROUTE <u>SR 587</u>
H.C. <u>MOSE</u>	WEATHER <u>SUNNY</u>	COUNTY <u>SENECA</u>
R.C. <u>LUMBREZER</u>	TEMP. <u>60°</u>	TOWNSHIP <u>BIG SPRINGS</u>
		SECTION <u>2</u>
		T <u>1</u> N R <u>13</u> E

TYPE MONUMENT MAG NAIL
 ON SURFACE - ~~BELOW~~ ON
 LEFT - ~~C PAV'T~~ - ~~RIGHT~~ 2.1'
13.6' TO RT. EDGE PAVEMENT
 S.L.M. 384+07
 Grid: Northing: 515969.173 Easting: 1735933.452



Preventative Maintenance
 Chip & Seal
 Existing Point Uncovered
 Date: 9-12-2011



RESET PK/WASHER
 10-13-98, MRC
 FD P.K.WASHER
 5/25/11, KPM
 GPS, REF C21
 5/26/11, KPM