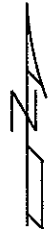
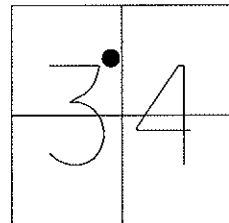


O.D.O.T. DISTRICT 2 SURVEY OFFICE

PERSONNEL _____	REFERENCE NO. <u>23</u>	SHEET <u>29</u> OF <u>30</u>
NOTES FINGER _____	DATE <u>5/25/11</u>	ROUTE <u>SR 587</u>
H.C. <u>MOSE</u>	WEATHER <u>SUNNY</u>	COUNTY <u>SENECA</u>
R.C. <u>LUMBREZER</u>	TEMP. <u>60°</u>	TOWNSHIP <u>LOUDON</u>
_____	_____	SECTION <u>34</u>
_____	_____	T <u>2</u> N R <u>13</u> E

TYPE MONUMENT P.K./WASHER
 ON SURFACE - ~~BELOW~~ ON
 LEFT - Q PAV'T - RIGHT ON, 0.4' LT Q 224
12.2' TO LT EDGE PAVEMENT
 S.L.M. 427+43.52



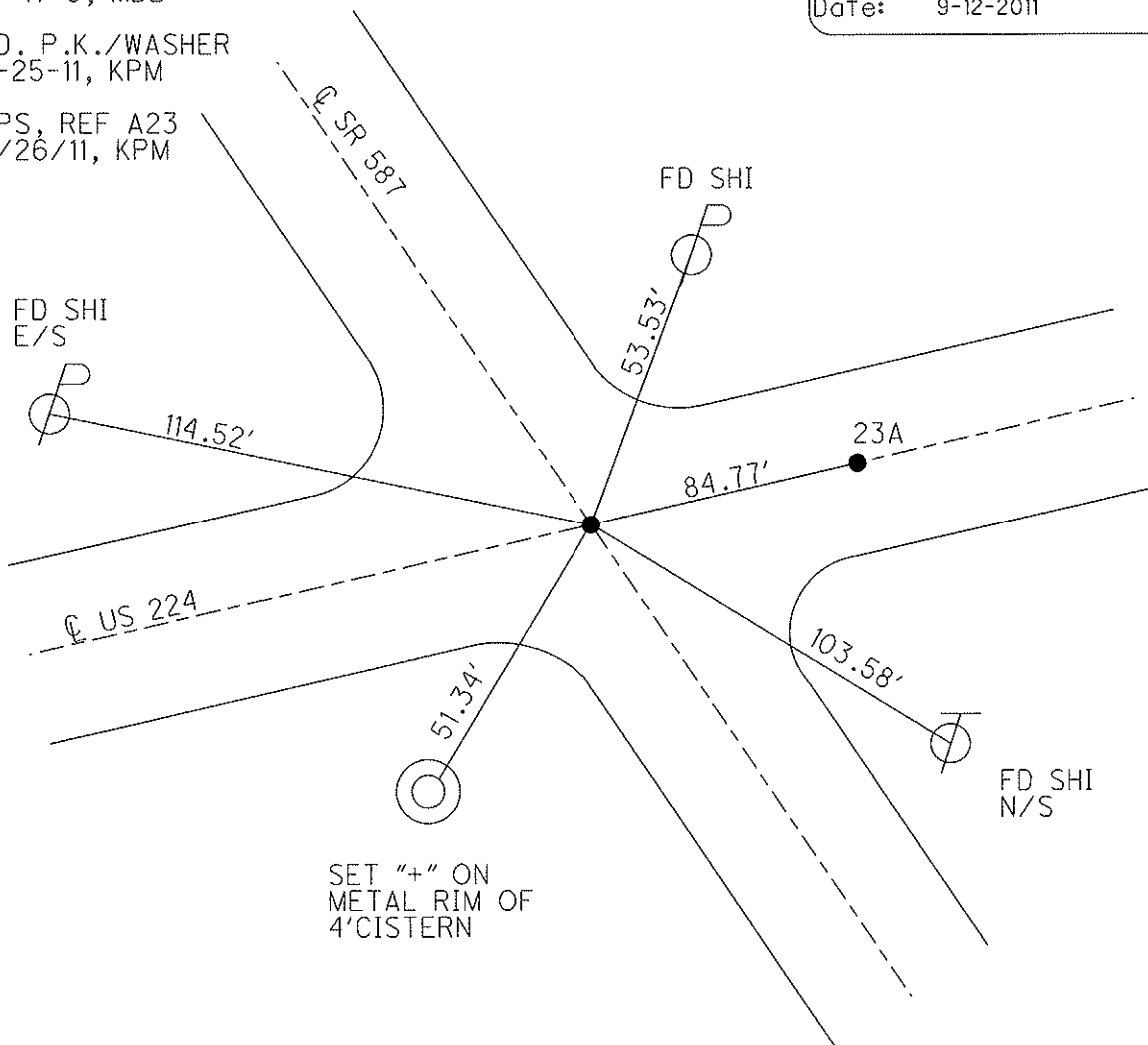
Grid: Northing: 519502.194 Easting: 1733536.289

RESET PK/WASHER
10-17-8, MDB

FD. P.K./WASHER
5-25-11, KPM

GPS, REF A23
5/26/11, KPM

Preventative Maintenance
Chip & Seal
Existing Point Uncovered
Date: 9-12-2011



O.D.O.T. DISTRICT 2 SURVEY OFFICE

PERSONNEL _____

REFERENCE NO. _____

SHEET 1 OF 1

NOTES BARNHISEL

H.C. CANTERBURY

R.C. BARNHISEL

DATE 9-10-00

WEATHER FAIR

TEMP. +70°

ROUTE US 224 / S.R. 587

COUNTY SENECA

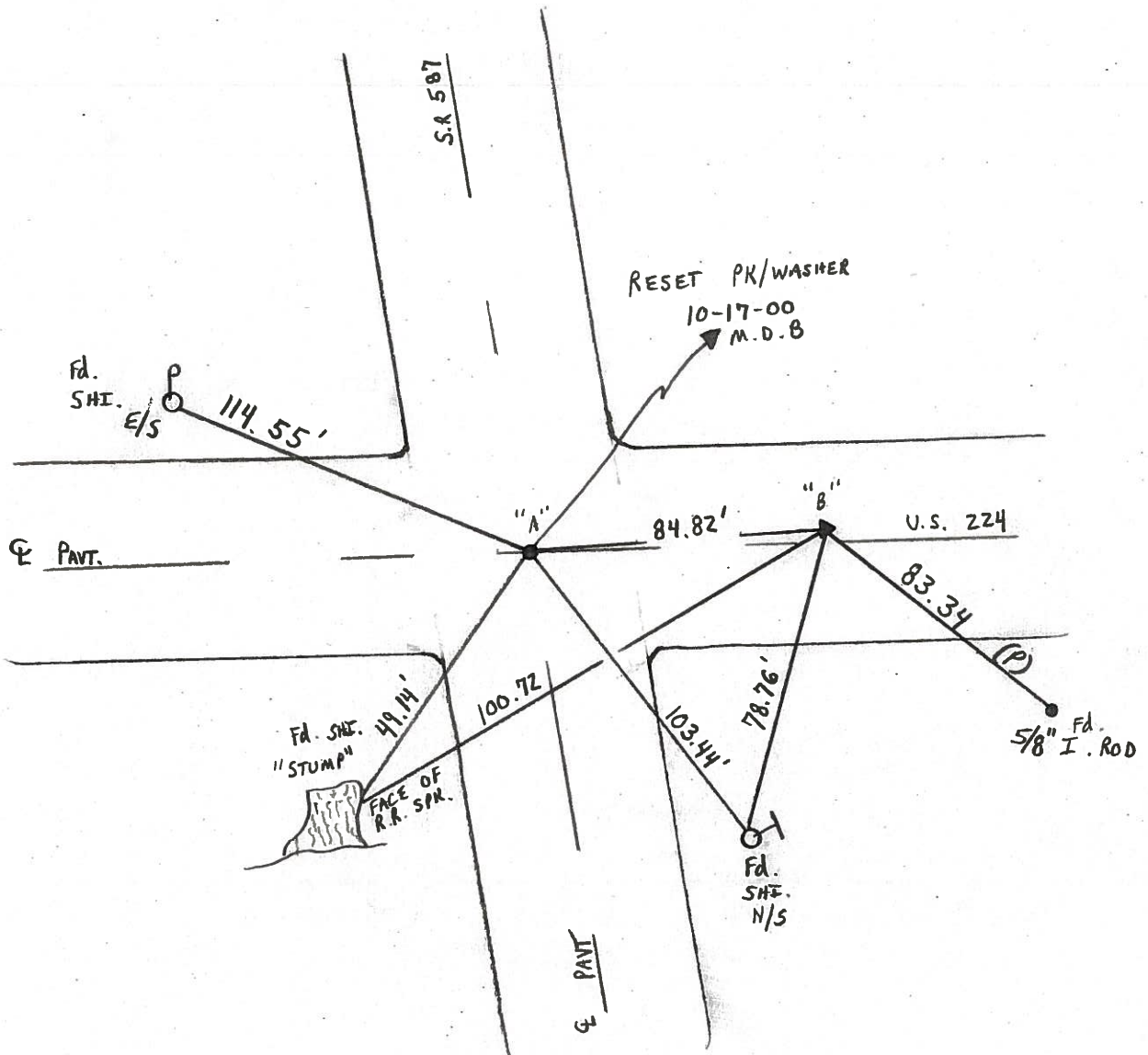
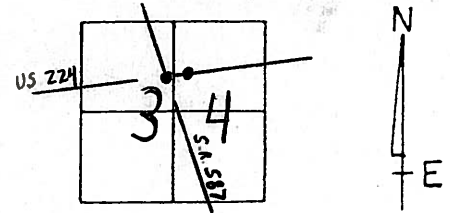
TOWNSHIP LOUDON

SECTION 34

T Z N R 13 E

	PT "A"	PT "B"
TYPE MONUMENT	P.K. + WASHER	P.K. + WASHER
ON SURFACE -	BELOW SURFACE	SURFACE
LEFT - & PAVT. - RIGHT	ON & BOTH	0.5' LT & US 224
TO	EDGE PAVEMENT	11.6' TO LT E.O.P.
S.L.M.	427+43.52 S.R. 587	193+18.05 U.S. 224

23



O.D.O.T. DISTRICT 2 SURVEY OFFICE

PERSONNEL

REFERENCE NO. 23

SHEET 24 OF 24

NOTES CANTERBURY

H.G. Rousos

R.C. LOEHRKE

DATE 5-5-98

WEATHER SUN

TEMP. +65° F

ROUTE #587

COUNTY SENECA

TOWNSHIP LOUDON

SECTION 34

T R

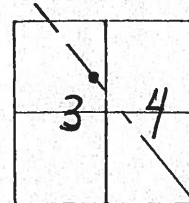
TYPE MONUMENT R.R. SPIKE

ON SURFACE - BELOW SURFACE

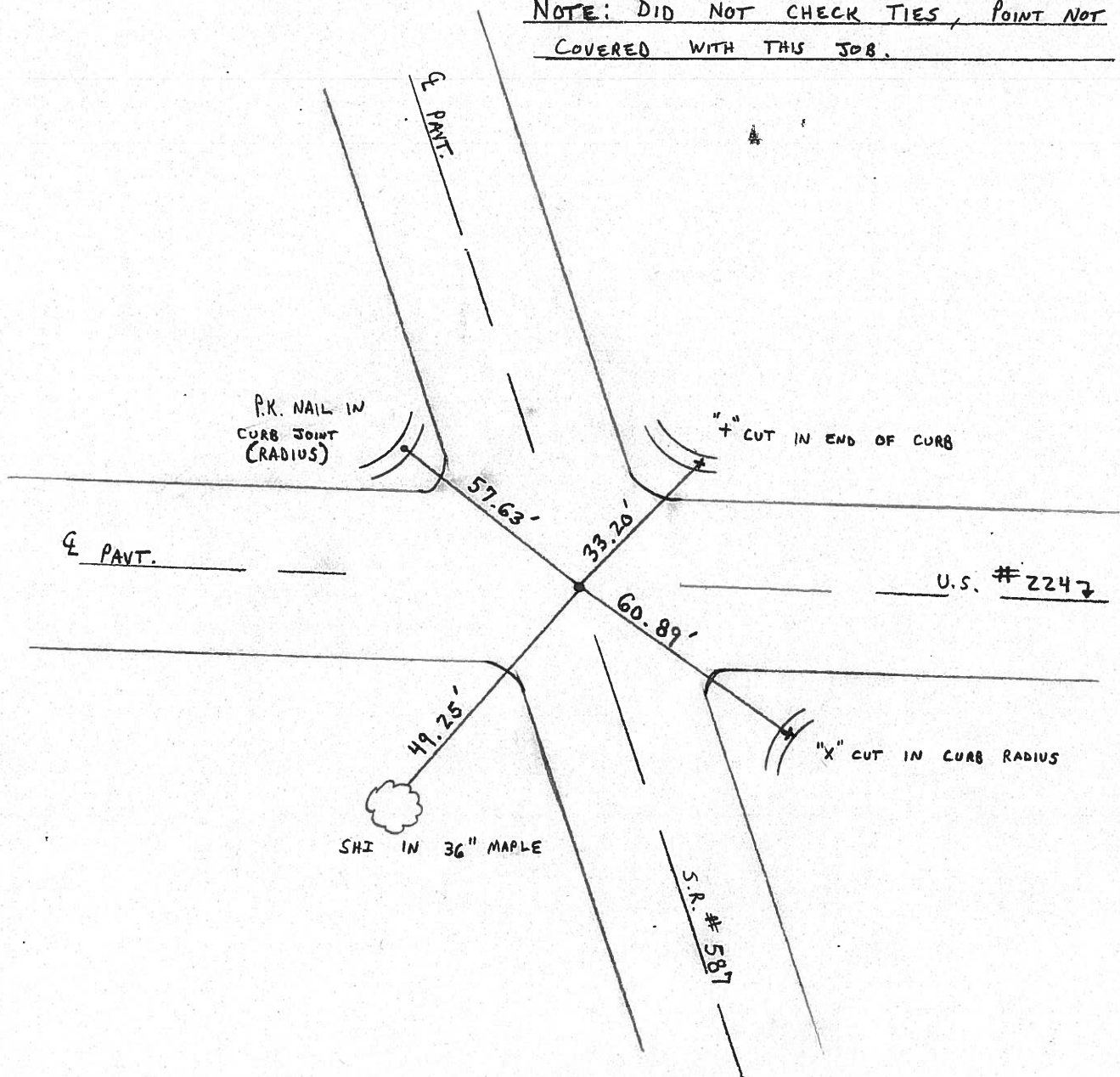
LEFT - & PAV'T. - RIGHT & BOTH

 TO EDGE PAVEMENT

S.L.M.



NOTE: DID NOT CHECK TIES, POINT NOT COVERED WITH THIS JOB.



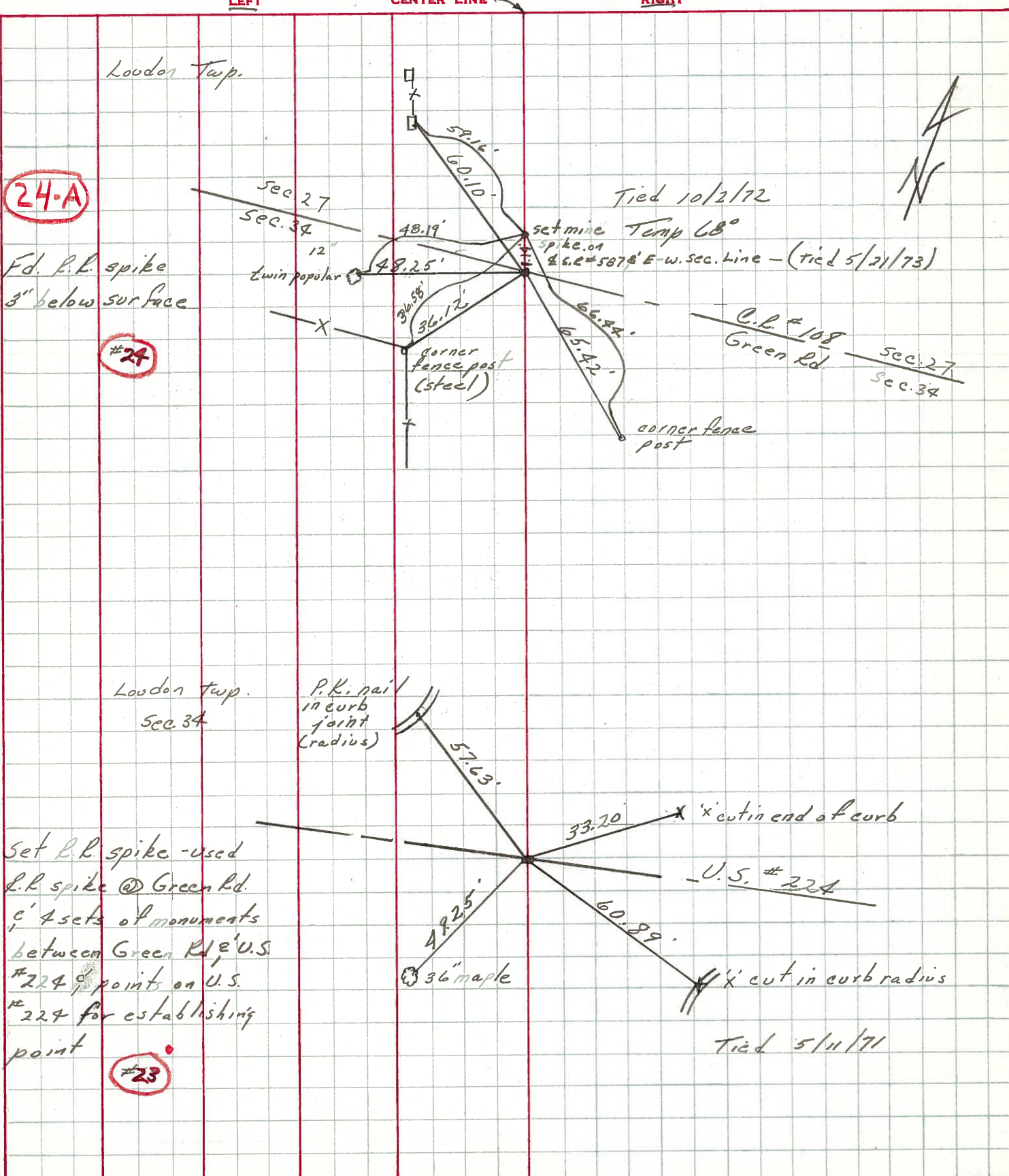
PERSONNEL	TITLE	PERSONNEL	TITLE
Cronin			
Ash			
Ripple			
Anderson			

COUNTY Seneca DATE drawn 2/5/73

S. R. # 587 WEATHER overcast

SEC. _____ TEMP. 35°

DESCRIPTION Tics for Control Points - Wyandot-Seneca County Line P.W JOB NO. _____



Fd. R.R. spike
3" below surface

#24

Set R.R. spike - used
R.R. spike @ Green Rd.
's 4 sets of monuments
between Green Rd & U.S.
#224, points on U.S.
#224 for establishing
point

#23

Tied 5/11/71

PERSONNEL	TITLE	PERSONNEL	TITLE	COUNTY	DATE	WEATHER	TEMP.
Schneider				Seneca	11-10-69	Cloudy	40°
Mosser				S. R. 587			
Barbour				SEC.			
Potts							

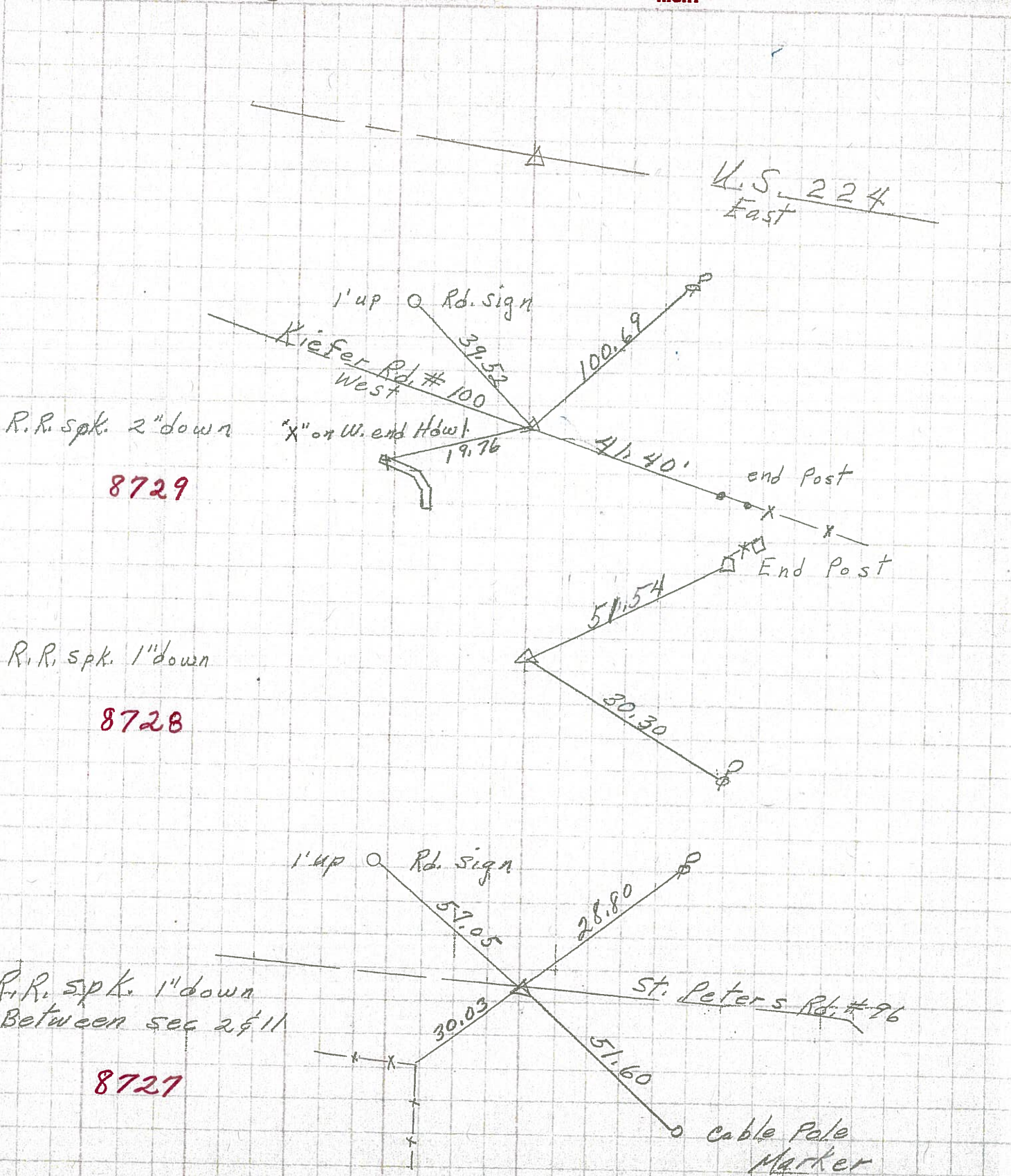
DESCRIPTION New Riegel to Foster U.S. 224

23

21-A

20

19



8729

8728

8727