

O.D.O.T. DISTRICT 2 SURVEY OFFICE

PERSONNEL _____

REFERENCE NO. _____

SHEET 1 OF 1

NOTES BARNHISEL

H.C. CANTERBURY

R.C. BARNHISEL

DATE 9-10-00

WEATHER FAIR

TEMP. +70°

ROUTE US 224 / S.R. 587

COUNTY SENECA

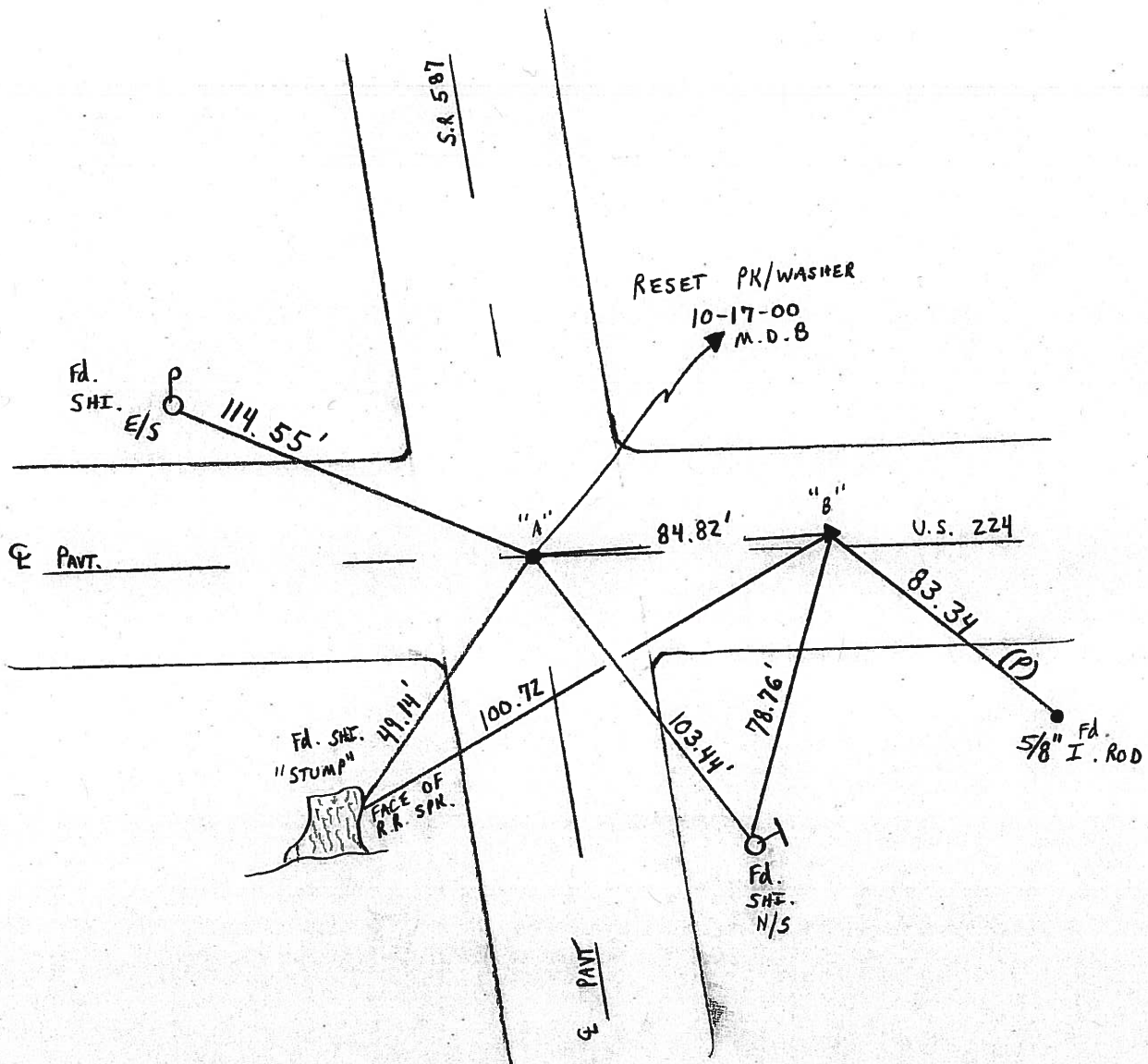
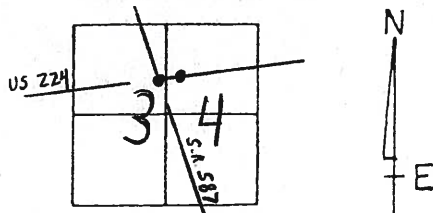
TOWNSHIP LOUDBON

SECTION 34

T Z N R 13 E

	PT "A"	PT "B"
TYPE MONUMENT	P.K. + WASHER	P.K. + WASHER
ON SURFACE - BELOW SURFACE	BELOW SURFACE	SURFACE
LEFT - & PAV'T. - RIGHT	ON & Both	0.5' LT & US 224
TO	EDGE PAVEMENT	11.6' TO LT E.O.P.
S.L.M.	427+43.52 S.R. 587	193+18.05 U.S. 224

23-A



RESET PK/WASHER
10-17-00
M.D.B

Fd. SHE. 49.14'
"STUMP"
FACE OF
R.R. SPK.

Fd. SHE. N/S
5/8" I. ROD