

O.D.O.T. DISTRICT 2 SURVEY OFFICE

PERSONNEL

REFERENCE NO. 24

SHEET 1 OF 18

NOTES LUMBREZER

DATE 6/27/11

ROUTE SR 587

H.C. LUMBREZER

WEATHER GOOD

COUNTY SENECA

R.C. FINGER

TEMP. 80°

TOWNSHIP LOUDON

SECTION 27

T 2 N R 13 E

TYPE MONUMENT P.K./WASHER

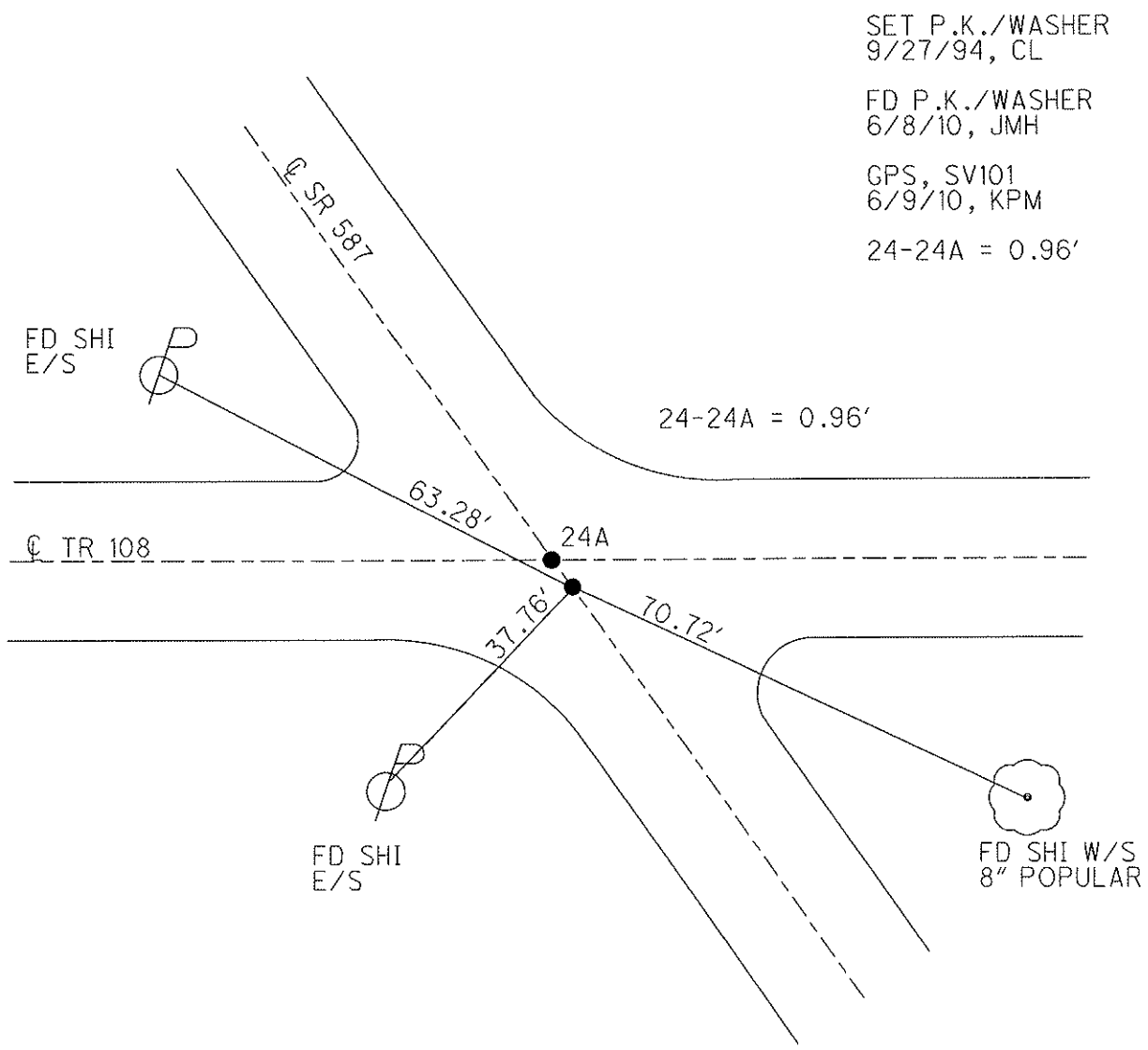
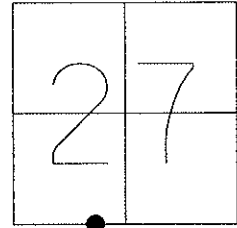
~~ON SURFACE~~ - BELOW ON

~~LEFT - Q~~ PAV'T - RIGHT 1'

TO EDGE PAVEMENT

S.L.M. 449+40.94

Grid: Northing: 521258.6179 Easting: 1732349.0004



SET P.K./WASHER
9/27/94, CL

FD P.K./WASHER
6/8/10, JM

GPS, SV101
6/9/10, KPM

24-24A = 0.96'

FD SHI
E/S

Q TR 108

FD SHI
E/S

FD SHI W/S
8" POPULAR

O.D.O.T. DISTRICT 2 SURVEY OFFICE

PERSONNEL _____

REFERENCE NO. 24

SHEET 1 OF 12

NOTES LOEHMKE

H.C. BARBOUR

DATE 5-4-94

ROUTE 587

R.C. GEYMAN

WEATHER FAIR

COUNTY SENECA

TEMP. +55

TOWNSHIP LOVDON

SECTION 27

T2 N R 13 E

Set P.K./WASHERS
9-27-94

A = P.K./WASHER

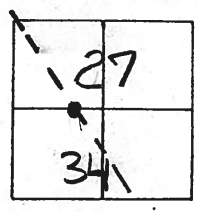
TYPE MONUMENT B - P.K. Nail

ON SURFACE - BELOW A = Surface B = 1" Deep

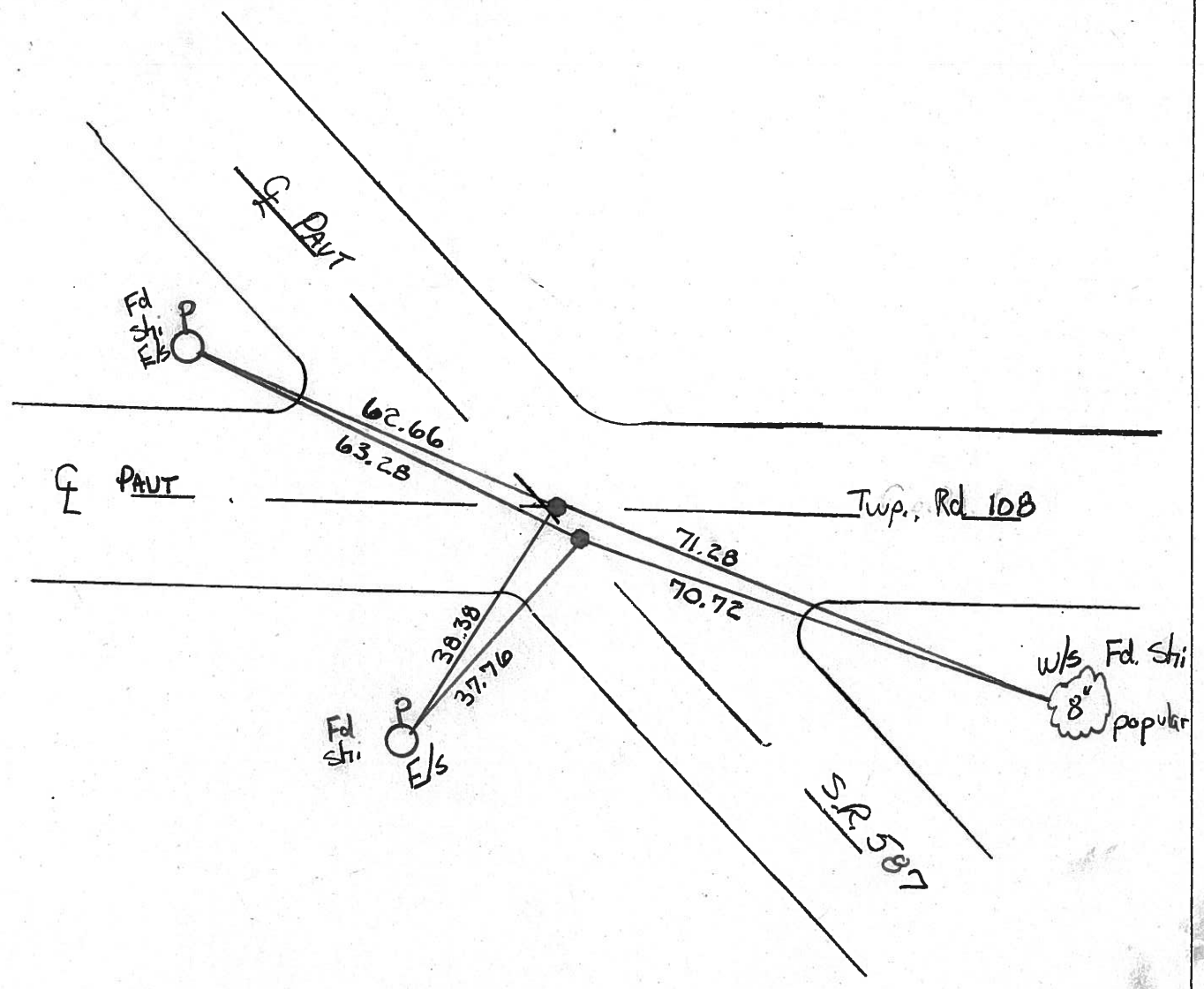
LEFT - ☉ PAV'T. - RIGHT A = 1' Rt B = 0.5' Rt

- TO - EDGE PAVEMENT

S.L.M. A = 44 + 46



0.96 Between



Resurveyed 1994

①

Q.D.O.T. DISTRICT 2 SURVEY OFFICE

SHEET _____ OF _____

County Seneca S.R. #587

Date 11/8/84 Drawn 11/13/84

Township Loudon

Weather overcast

Section 27

Temp. 45°

T2N, R13E

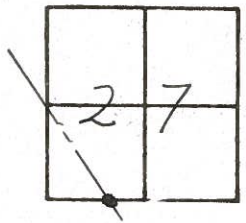
Personnel Cronin

Ripple

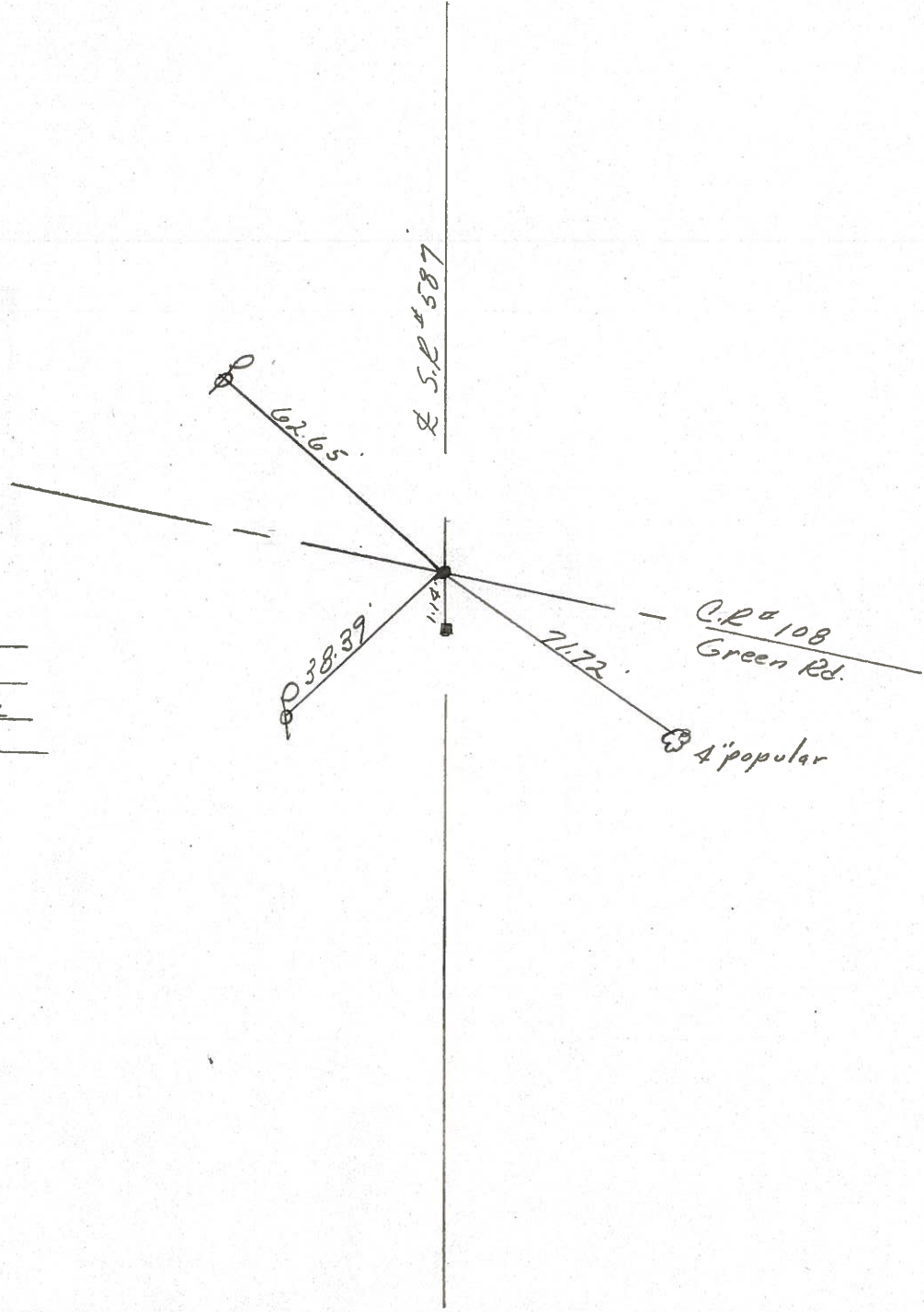
Geyman

Barbour

24 *

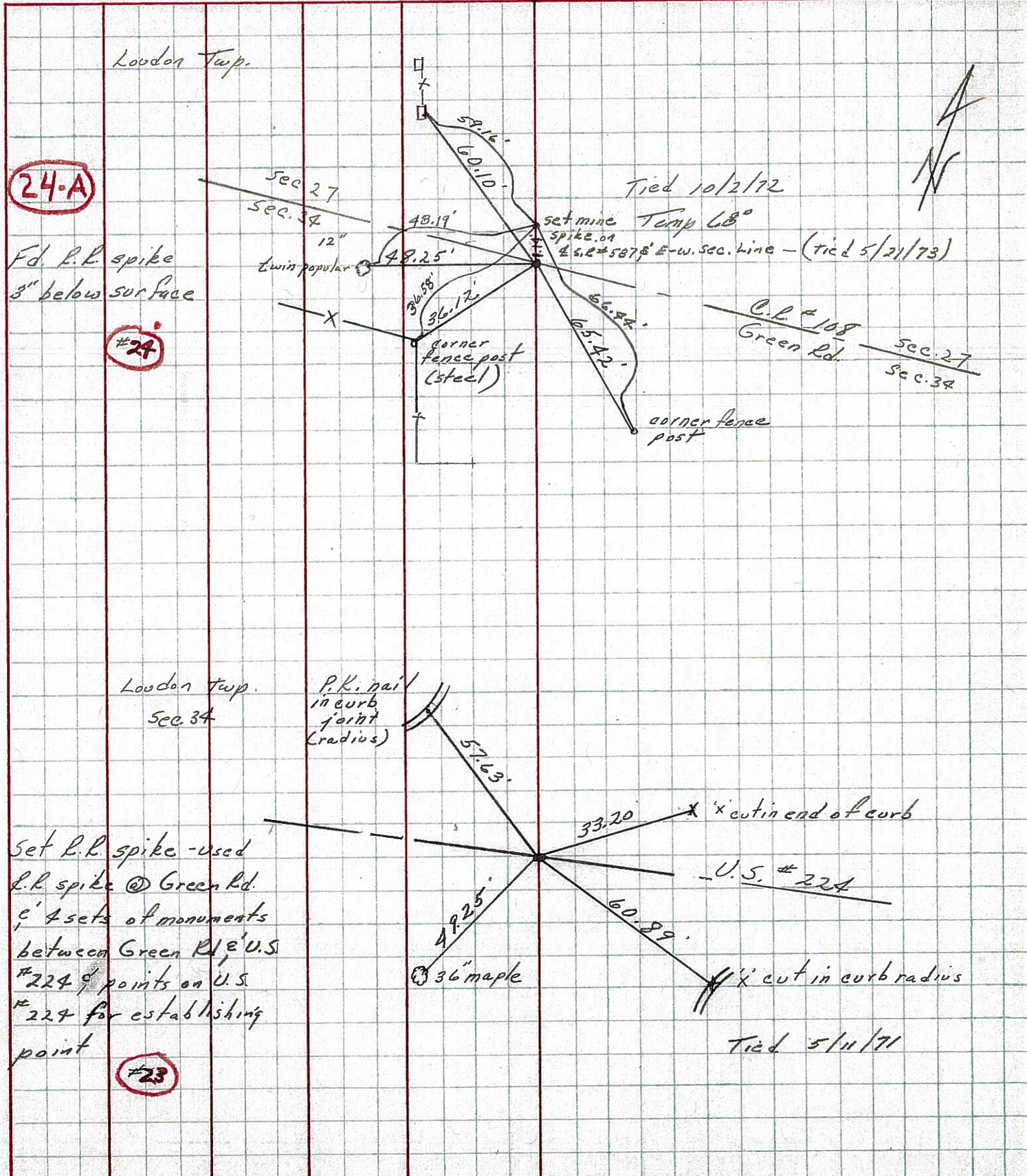


set P.K. & washer
 atop mine spike
 R.R. spike 5" below
 surface 1.14' so. of
 Section Line may have
 been used for & be here.



PERSONNEL	TITLE	PERSONNEL	TITLE	COUNTY	DATE
Cronin				Seneca	drawn 2/5/73
Ash				S. R. # 587	WEATHER overcast
Lippie				SEC.	TEMP 35°
Anderson					

DESCRIPTION Ties for Control Points - Wyandot-Seneca County Line N.W. JOB NO. _____



PERSONNEL TITLE PERSONNEL TITLE

Schneider
Mosser
Barbour
Potts

COUNTY Seneca DATE 11-12-69

S. R. 587 WEATHER Cloudy

SEC. TEMP. 40°

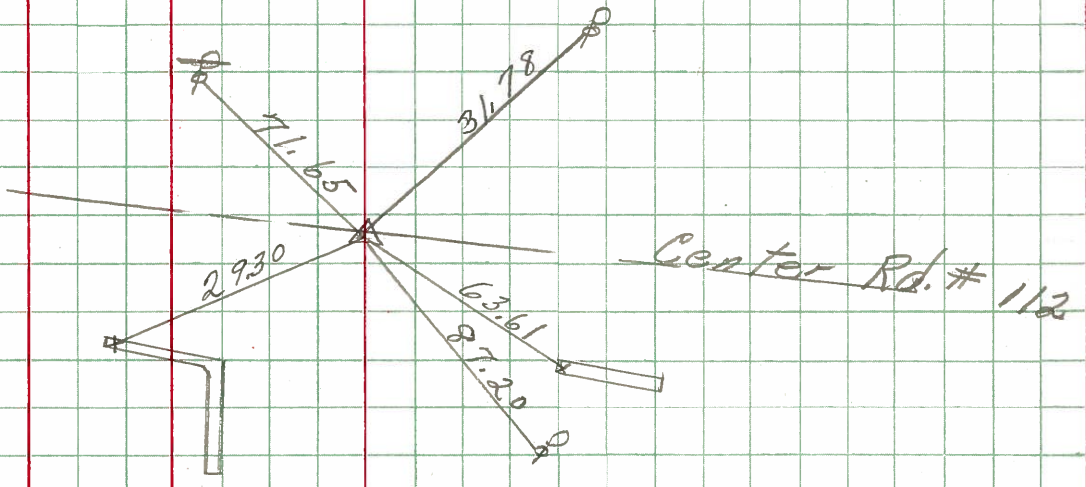
DESCRIPTION U.S. 224 to Fostoria SR. 18 JOB NO.

LEFT CENTER LINE RIGHT

30-A

R.R. spk. 3" down

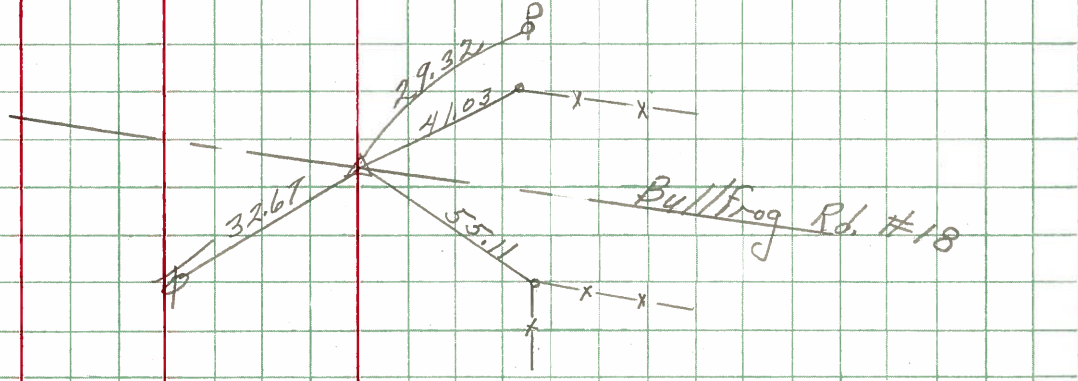
8732



28

R.R. spk. 3" down
P.K. on Top

8731



24

R.R. spk. 3" down

8730

