

O.D.O.T. DISTRICT 2 SURVEY OFFICE

PERSONNEL

REFERENCE NO. 24 A

SHEET 2 OF 18

NOTES LUMBREZER

DATE 6/27/11

ROUTE SR 587

H.C. LUMBREZER

WEATHER GOOD

COUNTY SENECA

R.C. FINGER

TEMP. 80°

TOWNSHIP LOUDON

SECTION 27

T 2 N R 13 E

TYPE MONUMENT P.K.NAIL

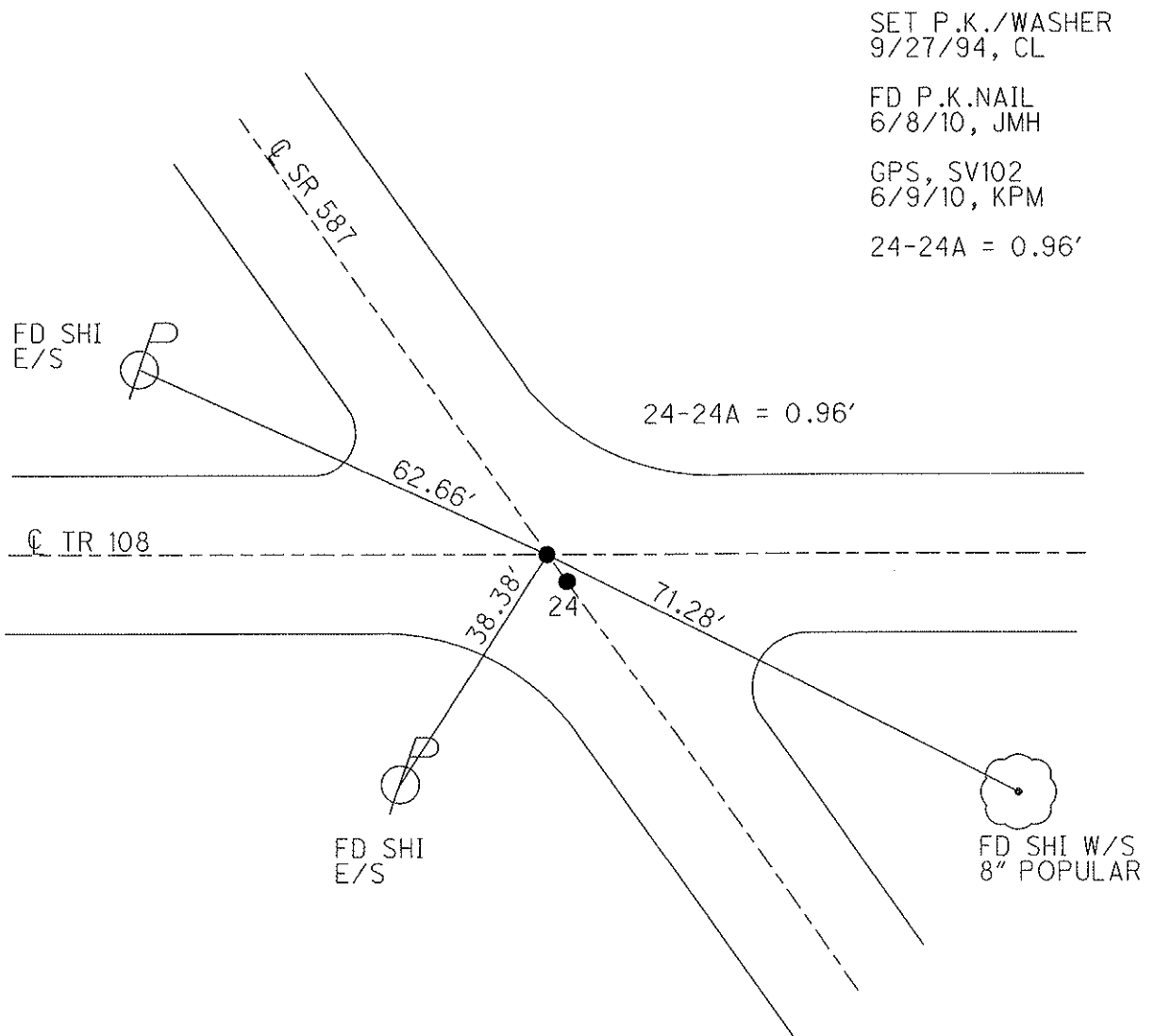
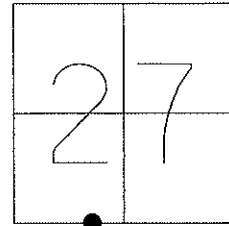
~~ON SURFACE~~ - BELOW 1"

LEFT - Q PAV'T - RIGHT 0.5'

TO EDGE PAVEMENT

S.L.M. 449+41.00

Grid: Northing: 521258.6116 Easting: 1732348.9445



SET P.K./WASHER
9/27/94, CL

FD P.K.NAIL
6/8/10, JMH

GPS, SV102
6/9/10, KPM

24-24A = 0.96'

O.D.O.T. DISTRICT 2 SURVEY OFFICE

PERSONNEL

REFERENCE NO. 24

SHEET 1 OF 12

NOTES LOEHKE

H.C. BARBOUR

DATE 5-4-94

ROUTE 587

R.C. GEYMAN

WEATHER FAIR

COUNTY SENECA

TEMP. +55

TOWNSHIP LOUDON

SECTION 27

Set P.K./WASHERS
9-27-94

T2 N R 13 E

A = P.K./WASHER

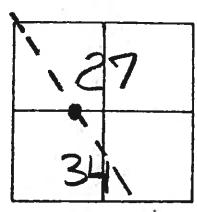
TYPE MONUMENT B = P.K. Nail
ON SURFACE - BELOW A = Surface
B = 1" Deep

LEFT - ☉ PAVT. - RIGHT A = 1' Rt B = 0.5' Rt

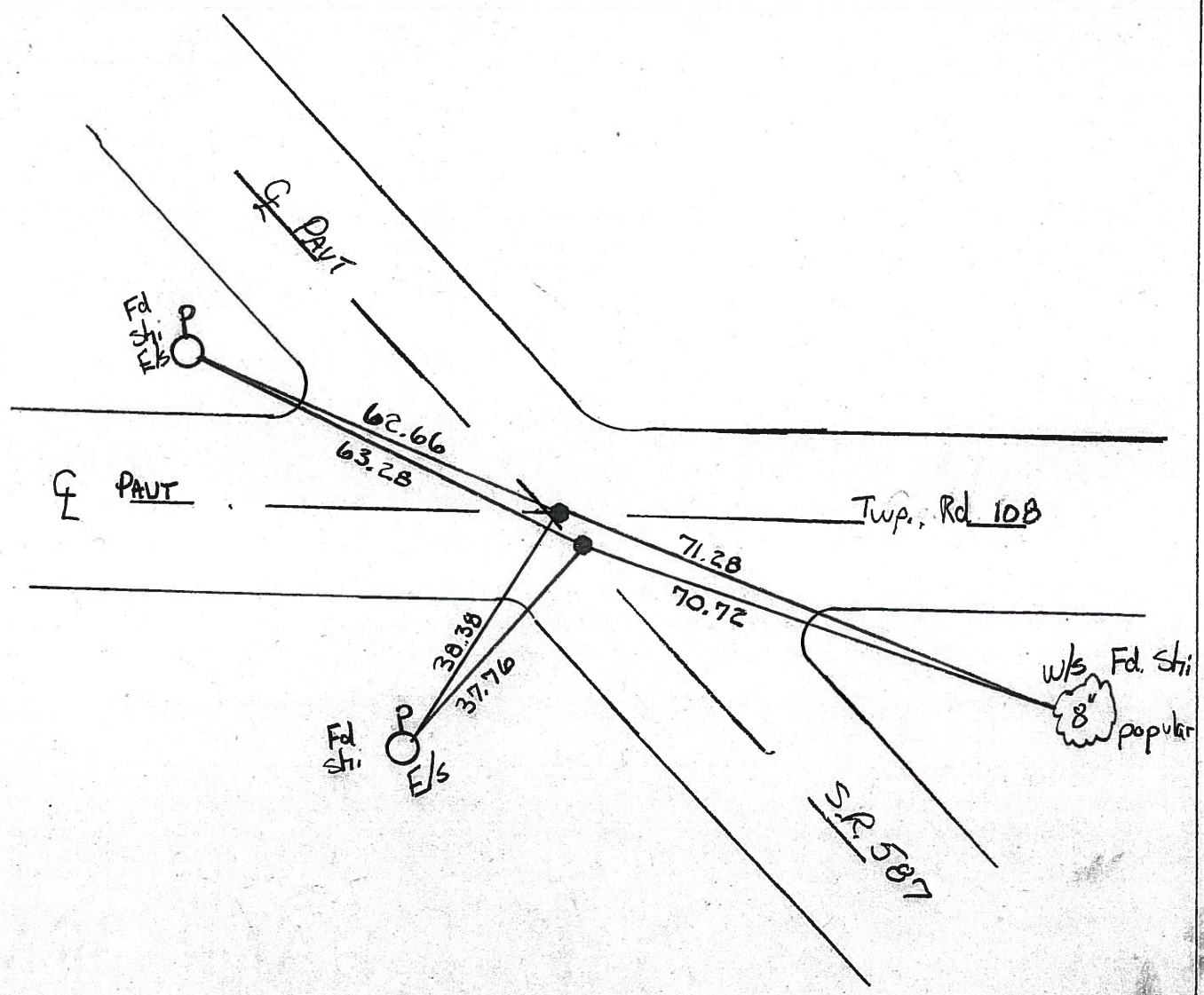
- TO - EDGE PAVEMENT

S.L.M. A = 449 + 46

24-A



0.96 Between



Resurveyed 1974

Q.D.O.T. DISTRICT 2 SURVEY OFFICE

SHEET _____ OF _____

County Seneca S.R. # 587

Township Loudon

Section 27

T2N, R13E

Personnel Cronin

Ripple

Geyman

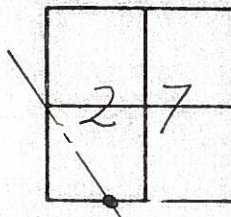
Barbour

24-A

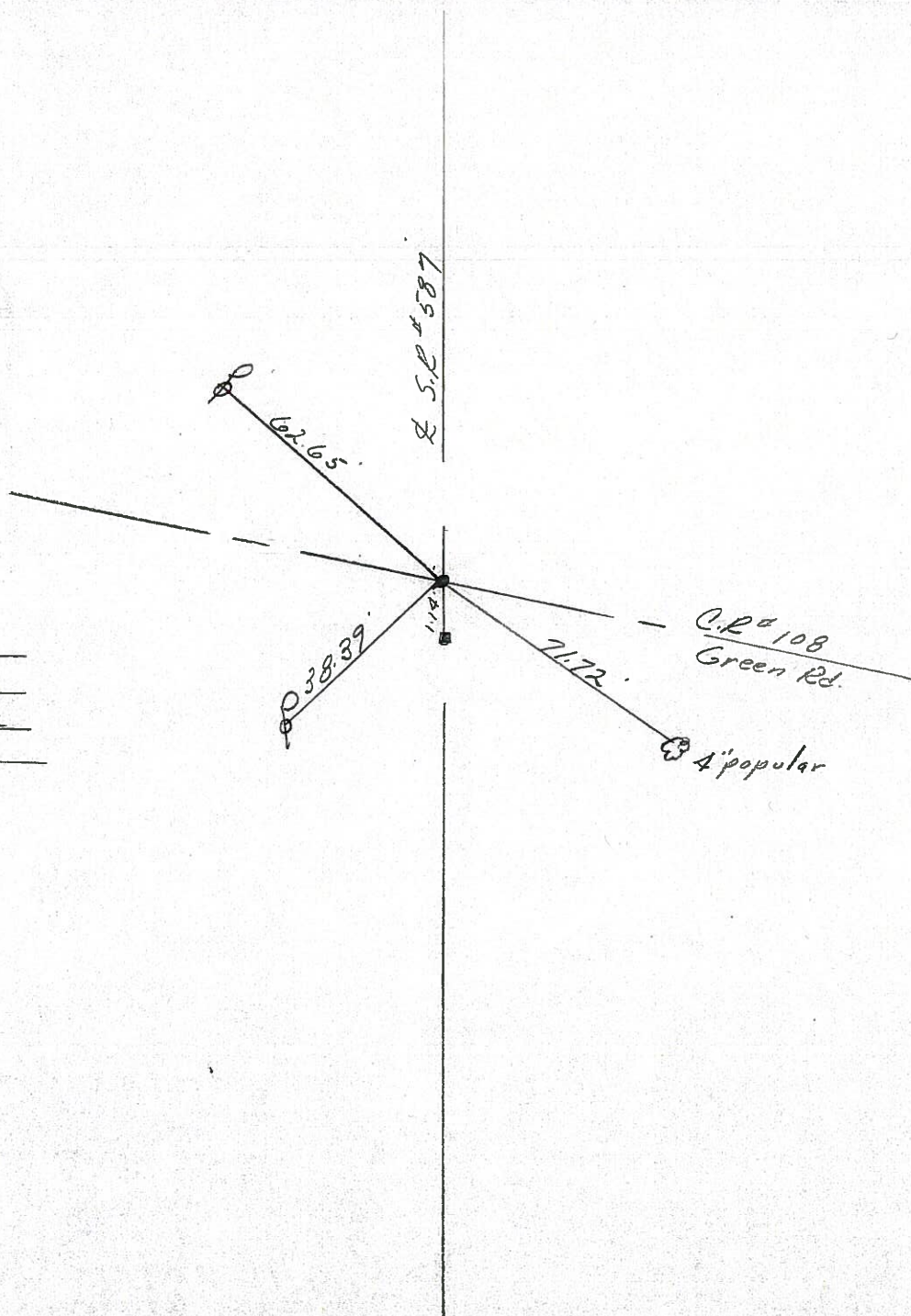
Date 11/8/84 Drawn 11/13/84

Weather overcast

Temp. 45°



set P.K. & washer
 atop mine spike
 R.R. spike 5" below
 surface 1.14' S. of
 Section Line may have
 been used for & before



PERSONNEL TITLE PERSONNEL TITLE

Cronin
Ash
Lippie
Anderson

COUNTY Seneca

DATE drawn 2/5/73

S. R. # 587

WEATHER overcast

SEC.

TEMP. 35°

DESCRIPTION Ties for Control Points - Wyandot-Seneca County Line N.W.

JOB NO.

