

O.D.O.T. DISTRICT 2 SURVEY OFFICE

PERSONNEL

REFERENCE NO. 25

SHEET 3 OF 18

NOTES LUMBREZER

DATE 6/27/11

ROUTE SR 587

H.C. LUMBREZER

WEATHER GOOD

COUNTY SENECA

R.C. FINGER

TEMP. 80°

TOWNSHIP LOUDON

SECTION 27

T 2 N R 13 E

TYPE MONUMENT P.K.SHANK

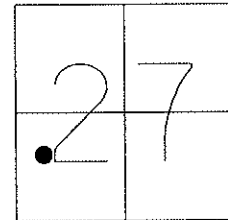
ON SURFACE - ~~BELOW~~ ON

LEFT - Q PAV'T - ~~RIGHT~~ 0.5'

9.5' TO LT EDGE PAVEMENT

S.L.M. 465+47.76

Grid: Northing: 522594.6971 Easting: 1731456.4553

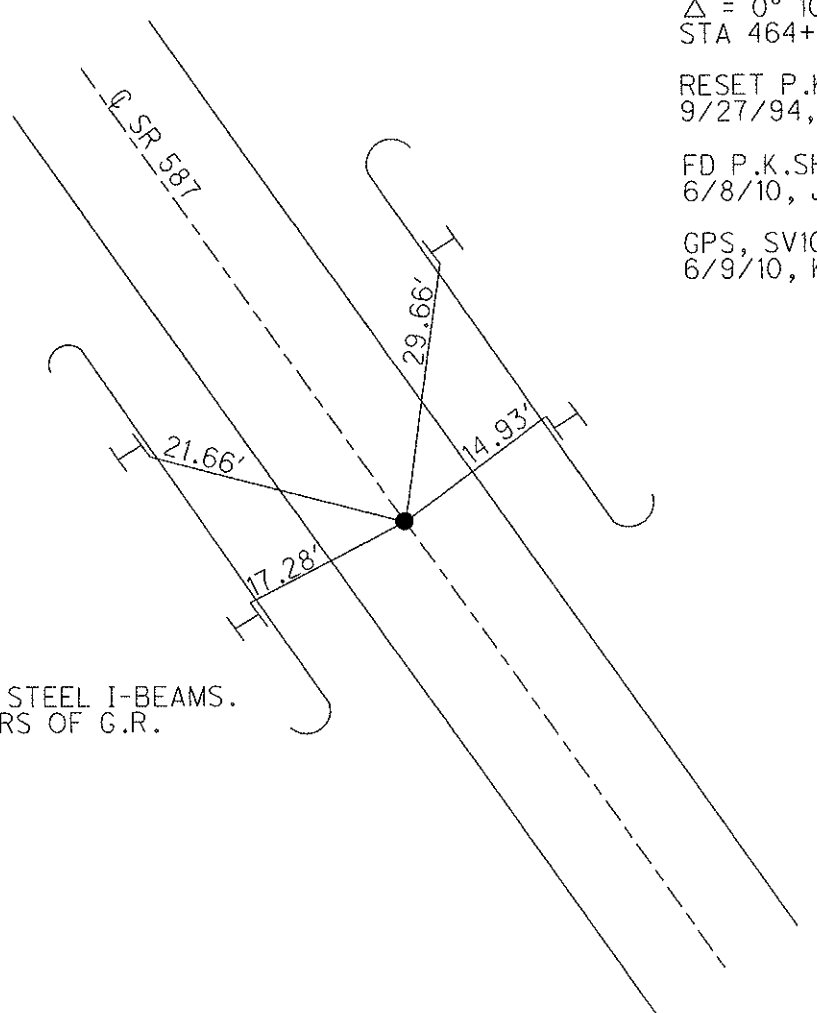


11/13/94 RECORD P.I.  
 $\Delta = 0^\circ 10' \text{ REC}$   
 $\Delta = 0^\circ 10' 30'' \text{ MEAS}$   
STA 464+69.50

RESET P.K./WASHER  
9/27/94, CL

FD P.K.SHANK  
6/8/10, JMH

GPS, SV103  
6/9/10, KPM



FD NOTCH IN STEEL I-BEAMS.  
ALL 4 CORNERS OF G.R.

O.D.O.T. DISTRICT 2 SURVEY OFFICE

PERSONNEL

REFERENCE NO. 25

SHEET 2 OF 12

NOTES LOENRKE

H.C. BARBOUR

R.C. GEYMAN

DATE 5-4-94

WEATHER FAIR

TEMP. +56

ROUTE S.R. 587

COUNTY SENECA

TOWNSHIP Loudon

SECTION 27

T2 N R B E

Reset P.K. / WASHER  
9-27-94

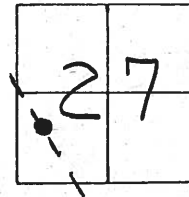
TYPE MONUMENT P.K. SHAFT

ON SURFACE - ~~BELOW~~ Yes

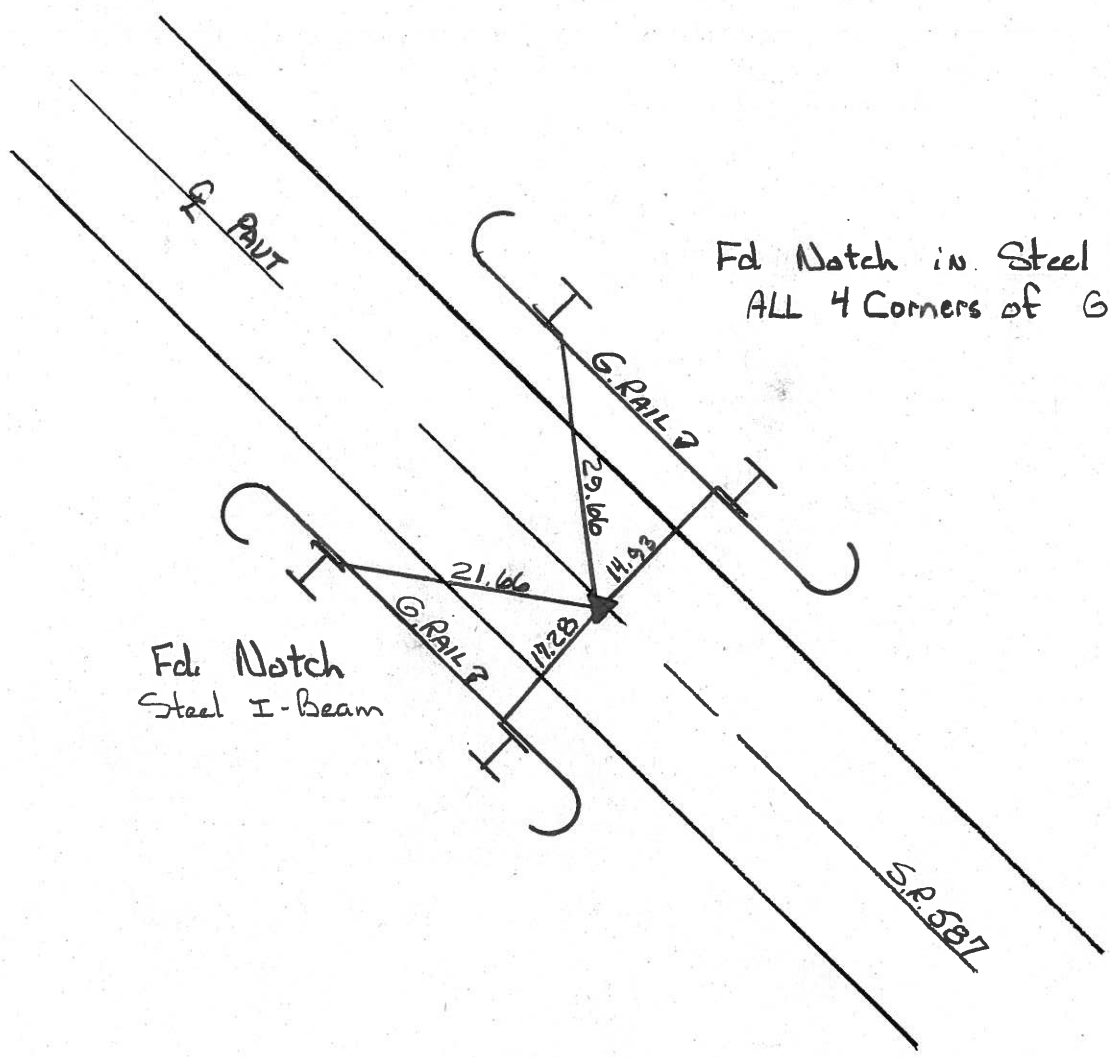
LEFT- & PAV'T. - ~~RIGHT~~ 0.5'

9.5 TO Lt EDGE PAVEMENT

S.L.M. 465 +55



Record P.I.  $\Delta = 0^{\circ} - 10' - 00''$  Rec  
 $\Delta = 0^{\circ} - 10' - 30''$  Meas 11-13-94  
Sta 464 + 69.50



Fd Notch in Steel I-Beams  
ALL 4 Corners of G.RAIL

Fd Notch  
Steel I-Beam

County Seneca S.R. #587

Township Loudon

Section 27

T2N, R13E

Personnel Cronin

Ripple

Geyman

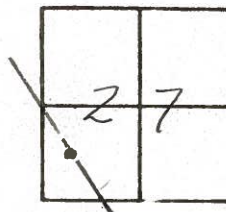
Barbour

25

Date 11/08/84 Drawn 11/13/84

Weather overcast - windy

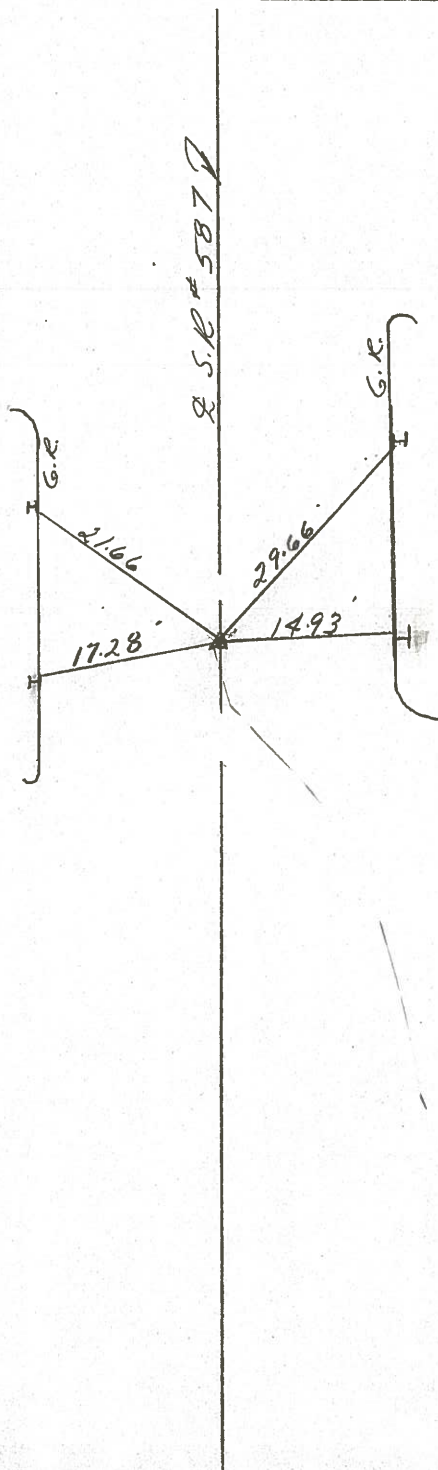
Temp. 45°



A=00° 10' 00" Rec.  
P.I. - A=00° 10' 30" Meas.

464 + 69.50

Set P.K. & washer



chisel mark 3.5' up on  
all I beams - four  
corners of bridge

PERSONNEL	TITLE	PERSONNEL	TITLE
Cronin			
Ash			
Ripple			
Anderson			

COUNTY Seneca DATE 5/21/73  
 S. R. # 587 WEATHER Sunny  
 SEC. \_\_\_\_\_ TEMP. 63°

DESCRIPTION Ties for Control Points - Wyandot-Seneca Co. Line N.W. JOB NO. \_\_\_\_\_

