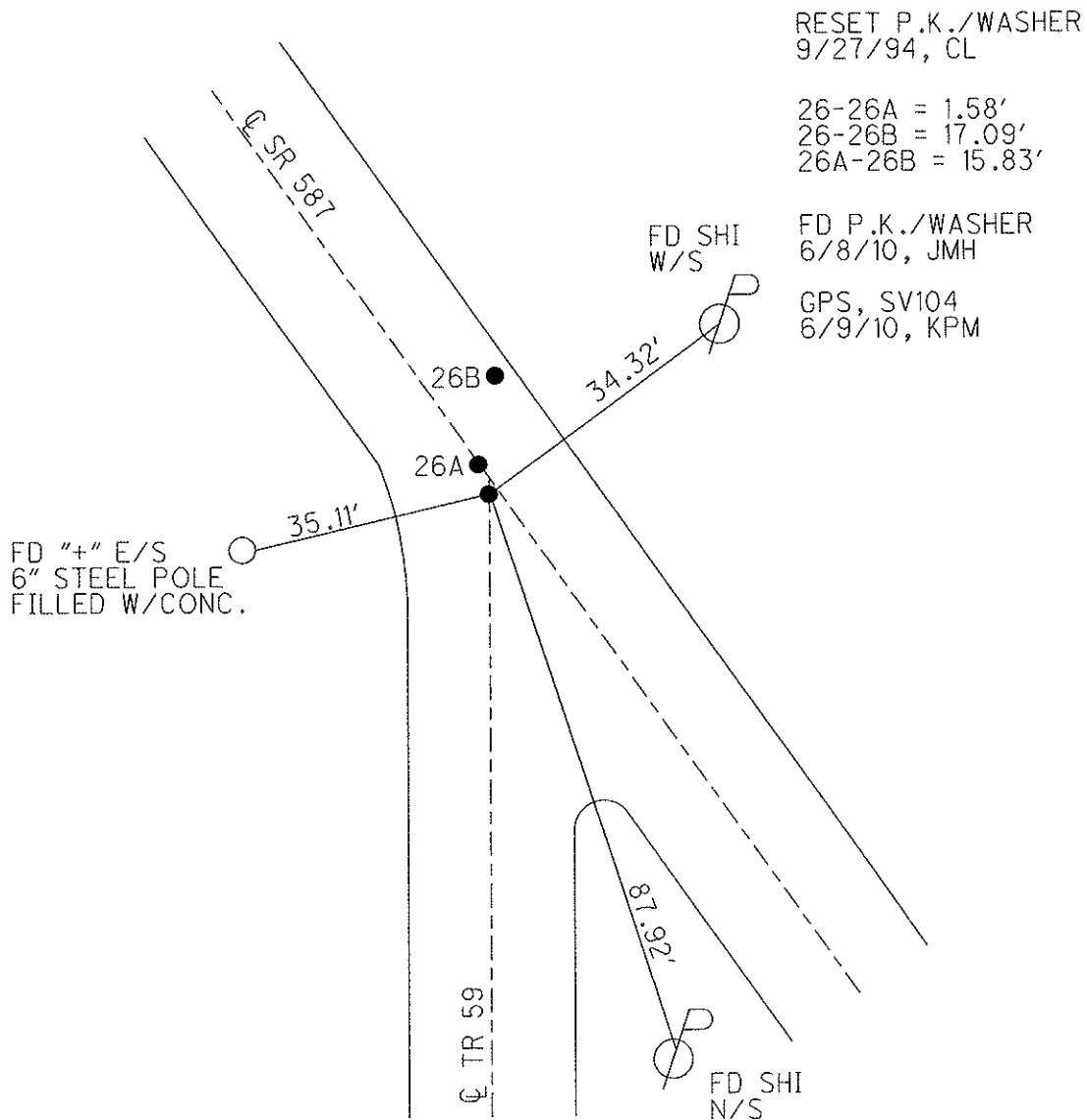
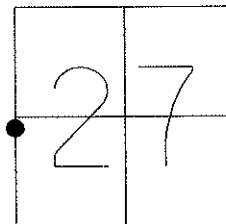


O.D.O.T. DISTRICT 2 SURVEY OFFICE

PERSONNEL	REFERENCE NO. <u>26</u>	SHEET <u>4</u> OF <u>18</u>
NOTES <u>LUMBREZER</u>	DATE <u>6/27/11</u>	ROUTE <u>SR 587</u>
H.C. <u>LUMBREZER</u>	WEATHER <u>GOOD</u>	COUNTY <u>SENECA</u>
R.C. <u>FINGER</u>	TEMP. <u>80°</u>	TOWNSHIP <u>LOUDON</u>
		SECTION <u>27</u>
		T <u>2</u> N R <u>13</u> E

TYPE MONUMENT P.K./WASHER
 ON SURFACE - ~~BELOW~~ ON
 LEFT - Q PAV'T - ~~RIGHT~~ 1.2'
11.3' TO RT EDGE PAVEMENT
 S.L.M. 478+16.76
 Grid: Northing: 523652.0145 Easting: 1730754.7271



O.D.O.T. DISTRICT 2 SURVEY OFFICE

PERSONNEL _____

REFERENCE NO. 26

SHEET 3 OF 12

NOTES LOENAKE

H.C. BARBOUR

R.C. GEYMAN

DATE 5-4-94

WEATHER FAIR

TEMP. +56

ROUTE S.R. 587

COUNTY Seneca

TOWNSHIP London

SECTION 27

T2 N R 13 E

TYPE MONUMENT Reset P.V./WASHERS

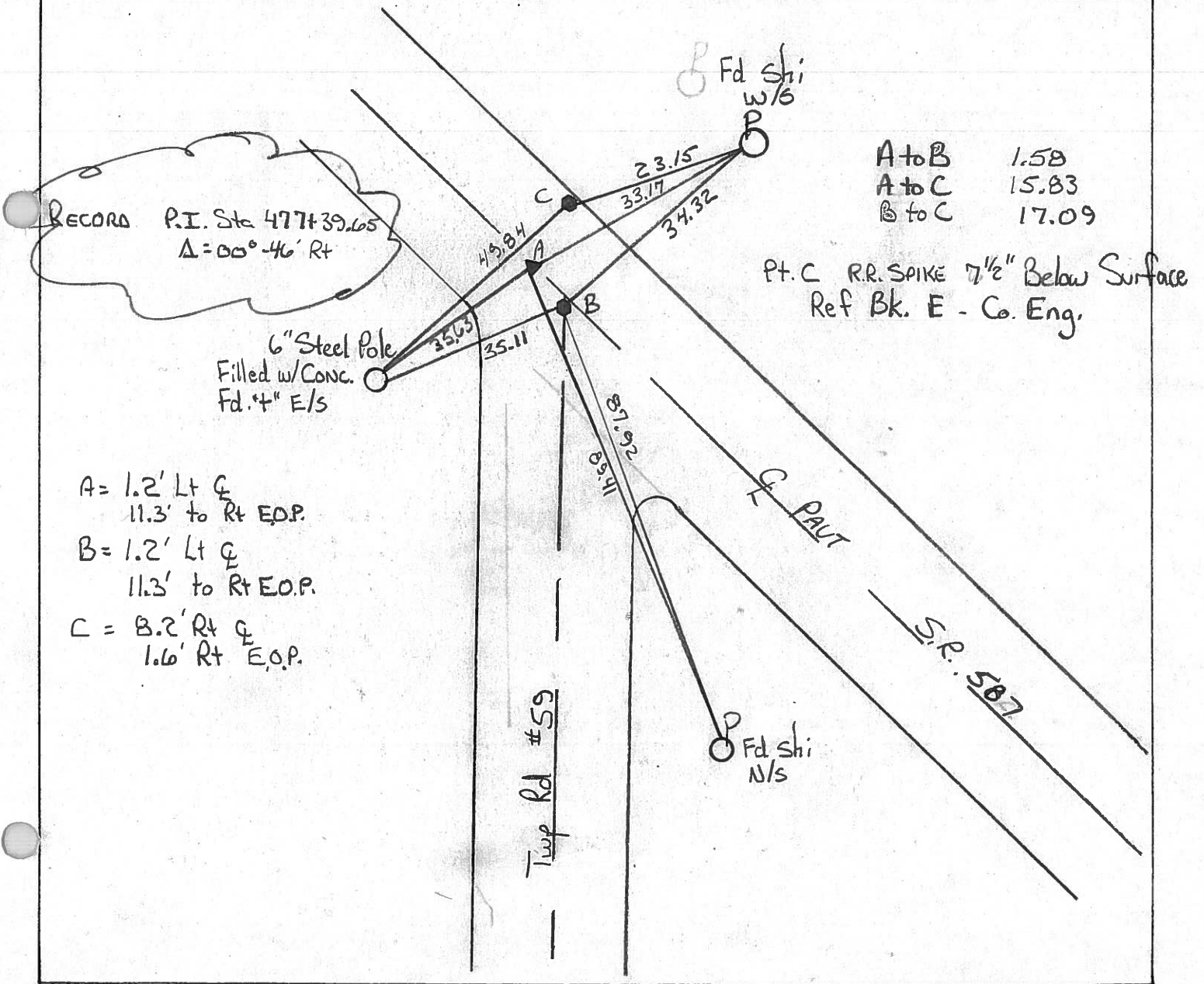
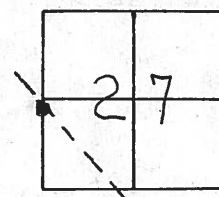
Reset
9-27-94
C.L.

ON SURFACE - BELOW Yes

LEFT - CL PAV'T. - RIGHT 1.2 Lt - P+A

11.3 TO RT EDGE PAVEMENT

S.L.M. B=478+280 A=478+29



A to B	1.58
A to C	15.83
B to C	17.09

Pt. C RR SPIKE 7 1/2" Below Surface
Ref Bk. E - Co. Eng.

- A = 1.2' Lt CL
11.3' to Rt E.O.P.
- B = 1.2' Lt CL
11.3' to Rt E.O.P.
- C = 8.2' Rt CL
1.6' Rt E.O.P.

Type Rd #59

S.R. 587

Q.D.O.T. DISTRICT 2 SURVEY OFFICE

SHEET _____ OF _____

County Seneca S. R. # 587

Township Loudon

Section 27

T2N, R13E

Personnel Cronin

Rippke

Geyman

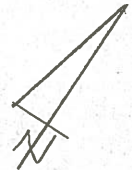
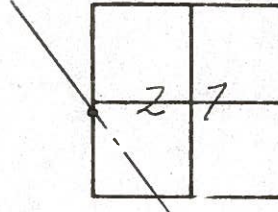
Barbour

26

Date 11/08/84 Drawn 11/13/84

Weather cloudy - windy

Temp. 45°



P.I. A = 00° 46' Rt. Rec.
477 + 39.65
set P.K. & washer atop
R.R. spike (1/2" below surface)
1' Lt. & Pavement

