

O.D.O.T. DISTRICT 2 SURVEY OFFICE

PERSONNEL

REFERENCE NO. 26 B

SHEET 6 OF 18

NOTES LUMBREZER

DATE 6/27/11

ROUTE SR 587

H.C. LUMBREZER

WEATHER GOOD

COUNTY SENECA

R.C. FINGER

TEMP. 80°

TOWNSHIP LOUDON

SECTION 27

T 2 N R 13 E

TYPE MONUMENT P.K./WASHER

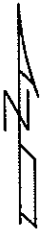
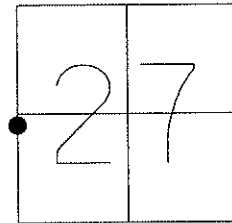
~~ON SURFACE~~ - BELOW 0.8'

~~LEFT~~ - CL PAV'T - RIGHT 8.2'

1.6' TO RT EDGE PAVEMENT

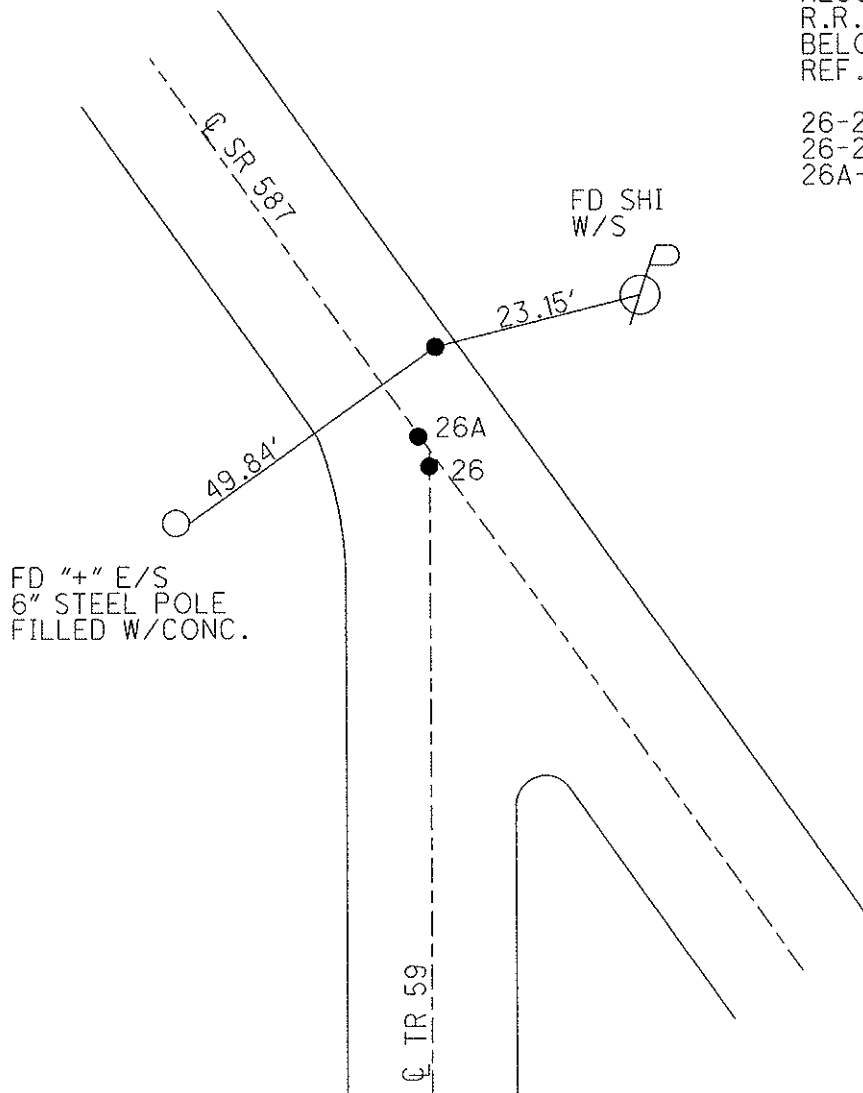
S.L.M. _____

Grid: Northing: 523669.1644 Easting: 1730755.1043



RECORD:
R.R. SPIKE 7 1/2"
BELOW SURFACE.
REF. BOOK E-CO. ENG.

26-26A = 1.58'
26-26B = 17.09'
26A-26B = 15.83'



O.D.O.T. DISTRICT 2 SURVEY OFFICE

PERSONNEL _____

REFERENCE NO. 26

SHEET 3 OF 12

NOTES LOENAKE

H.C. BARBOUR

R.C. GEYMAN

DATE 5-4-94

WEATHER FAIR

TEMP. +56

ROUTE S.R. 587

COUNTY Seneca

TOWNSHIP London

SECTION 27

T2 N R 13 E

TYPE MONUMENT P.V./WASHERS

ON SURFACE - BELOW Yes

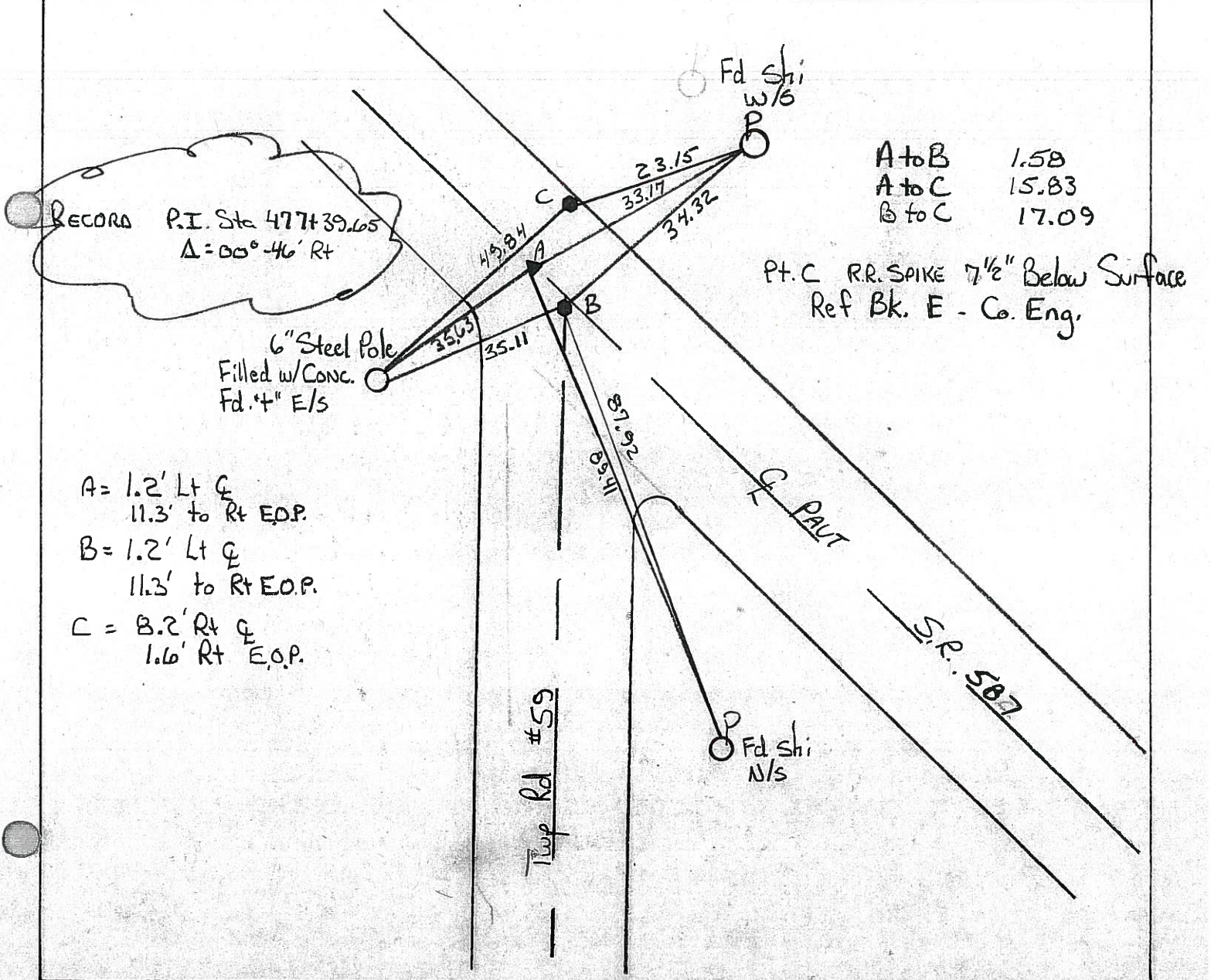
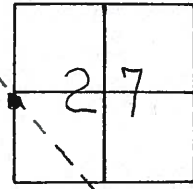
LEFT - CL PAV'T. - ~~RIGHT~~ 1.2 Lt - P+A

11.3 TO Rt EDGE PAVEMENT

S.L.M. B=478+28 A=478+29

Reset
9-27-94
C.L.

26-B



A to B 1.58
A to C 15.83
B to C 17.09

A = 1.2' Lt CL
11.3' to Rt E.O.P.
B = 1.2' Lt CL
11.3' to Rt E.O.P.
C = 1.2' Rt CL
1.6' Rt E.O.P.

Top Rd #59

Pt. C RR SPIKE 7 1/2" Below Surface
Ref Bk. E - Co. Eng.

Q.D.O.T. DISTRICT 2 SURVEY OFFICE

SHEET _____ OF _____

County Seneca S. R. # 587

Township Loudon

Section 27

T2N, R13E

Personnel Cronin

Ripple

Geyman

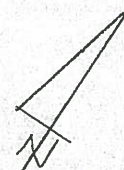
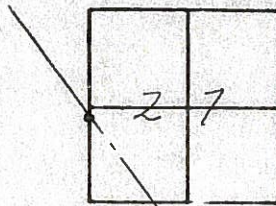
Barbour

26-B

Date 11/08/84 Drawn 11/13/84

Weather cloudy + windy

Temp. 45°

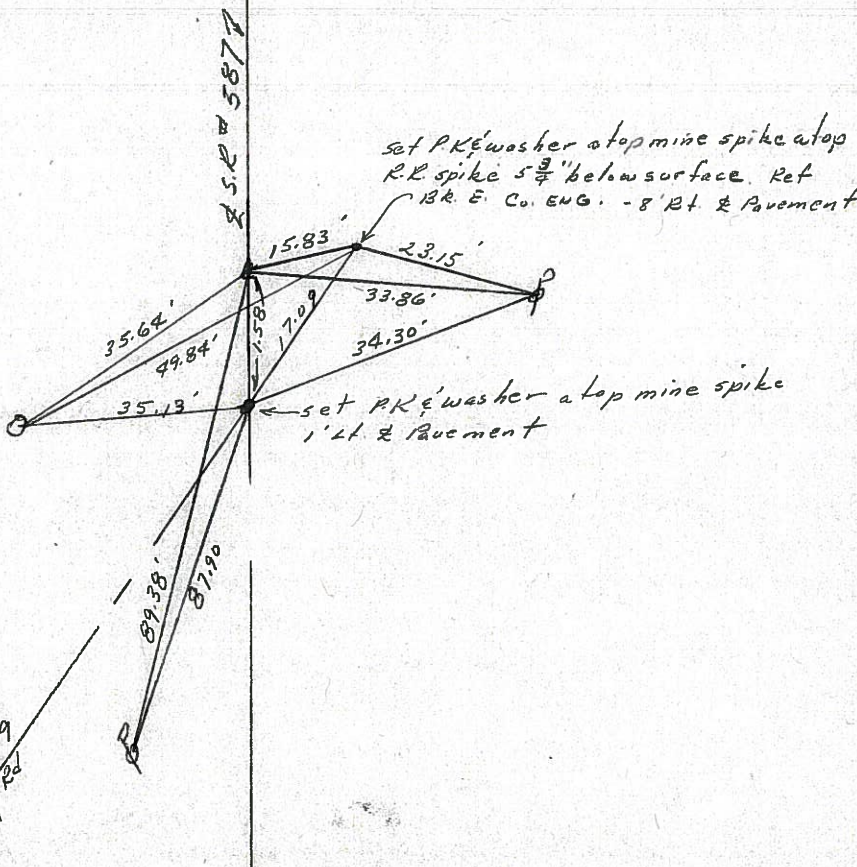


PI - Δ = 00° 46' 21.8" E. Sec.

477 + 39.65

Set P.K. & washer atop
R.R. spike (7 1/2" below surface)

1' Lt. & Pavement



PERSONNEL	TITLE	PERSONNEL	TITLE	COUNTY	DATE
Cronin				Seneca	5/21/73
Ash				S. R. # 587	WEATHER Sunny
Ripple				SEC.	TEMP. 63°
Anderson					

DESCRIPTION Ties for Control Points - Wyandot-Seneca Co. Line N.W. JOB NO. _____

