

O.D.O.T. DISTRICT 2 SURVEY OFFICE

PERSONNEL _____

REFERENCE NO. 28 A

SHEET 9 OF 18

NOTES LUMBREZER

DATE 6/27/11

ROUTE SR 587

H.C. LUMBREZER

WEATHER GOOD

COUNTY SENECA

R.C. FINGER

TEMP. 80°

TOWNSHIP LOUDON

SECTION 28

T 2 N R 13 E

TYPE MONUMENT P.K./WASHER

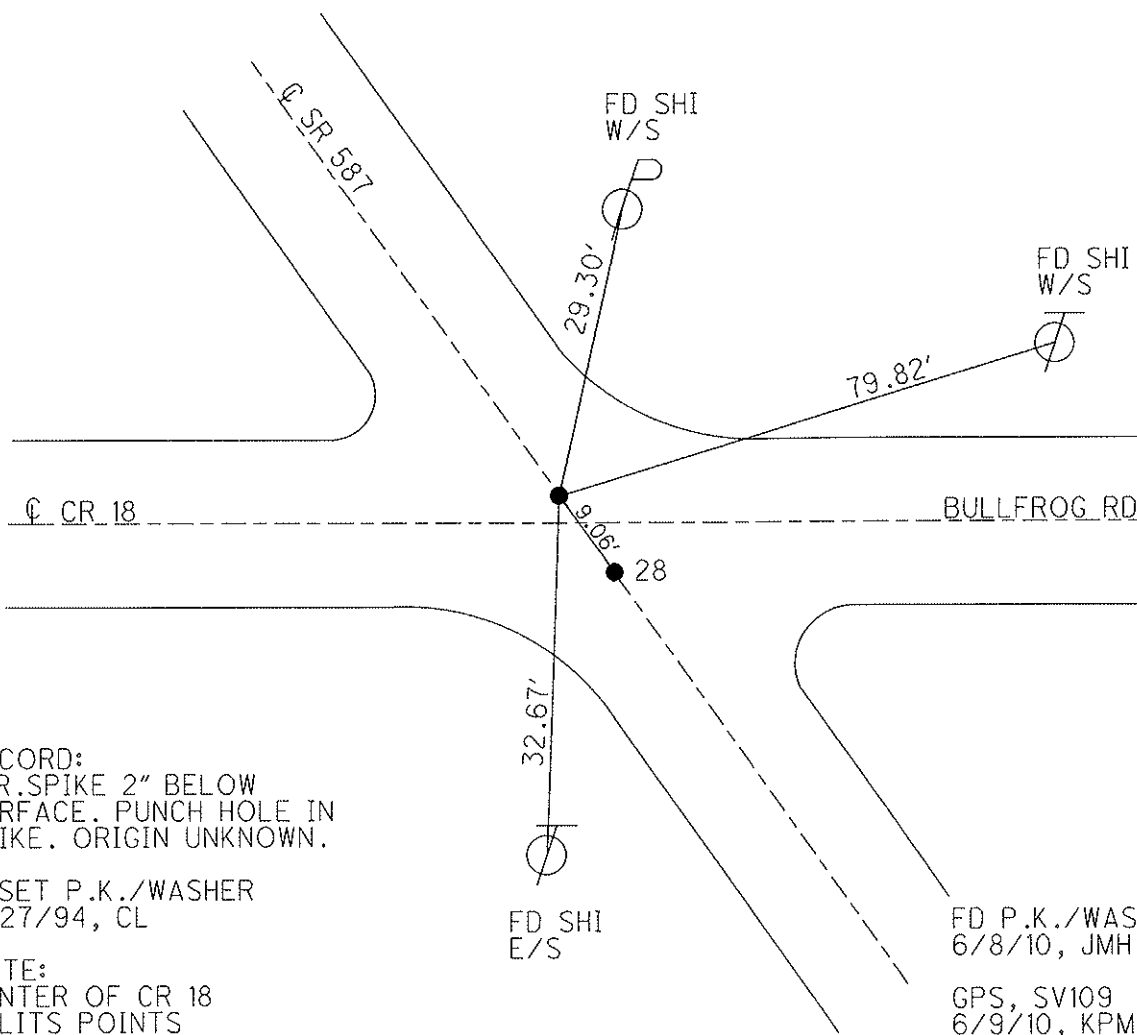
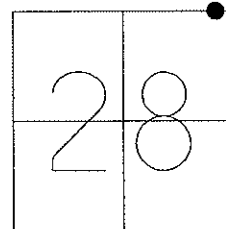
ON SURFACE - ~~BELOW~~ ON

LEFT - Q PAV'T - RIGHT ON

TO EDGE PAVEMENT

S.L.M. 512+96.84

Grid: Northing: 526577.1639 Easting: 1728869.3849



RECORD:
R.R. SPIKE 2" BELOW
SURFACE. PUNCH HOLE IN
SPIKE. ORIGIN UNKNOWN.

RESET P.K./WASHER
9/27/94, CL

NOTE:
CENTER OF CR 18
SPLITS POINTS

FD P.K./WASHER
6/8/10, JMH

GPS, SV109
6/9/10, KPM

O.D.O.T. DISTRICT 2 SURVEY OFFICE

PERSONNEL

REFERENCE NO. 28

SHEET 5 OF 12

NOTES LOEHRKE

H.C. BARBOUR

R.C. GEYMAN

DATE 5-4-94

WEATHER FAIR

TEMP. +58

ROUTE S.R. 587

COUNTY Seneca

TOWNSHIP Loudon

SECTION 28

T 2 N R 13 E

Reset - 9-27-94

TYPE MONUMENT PT "A" - PK/WASHER PT "B" - PK/WASHER

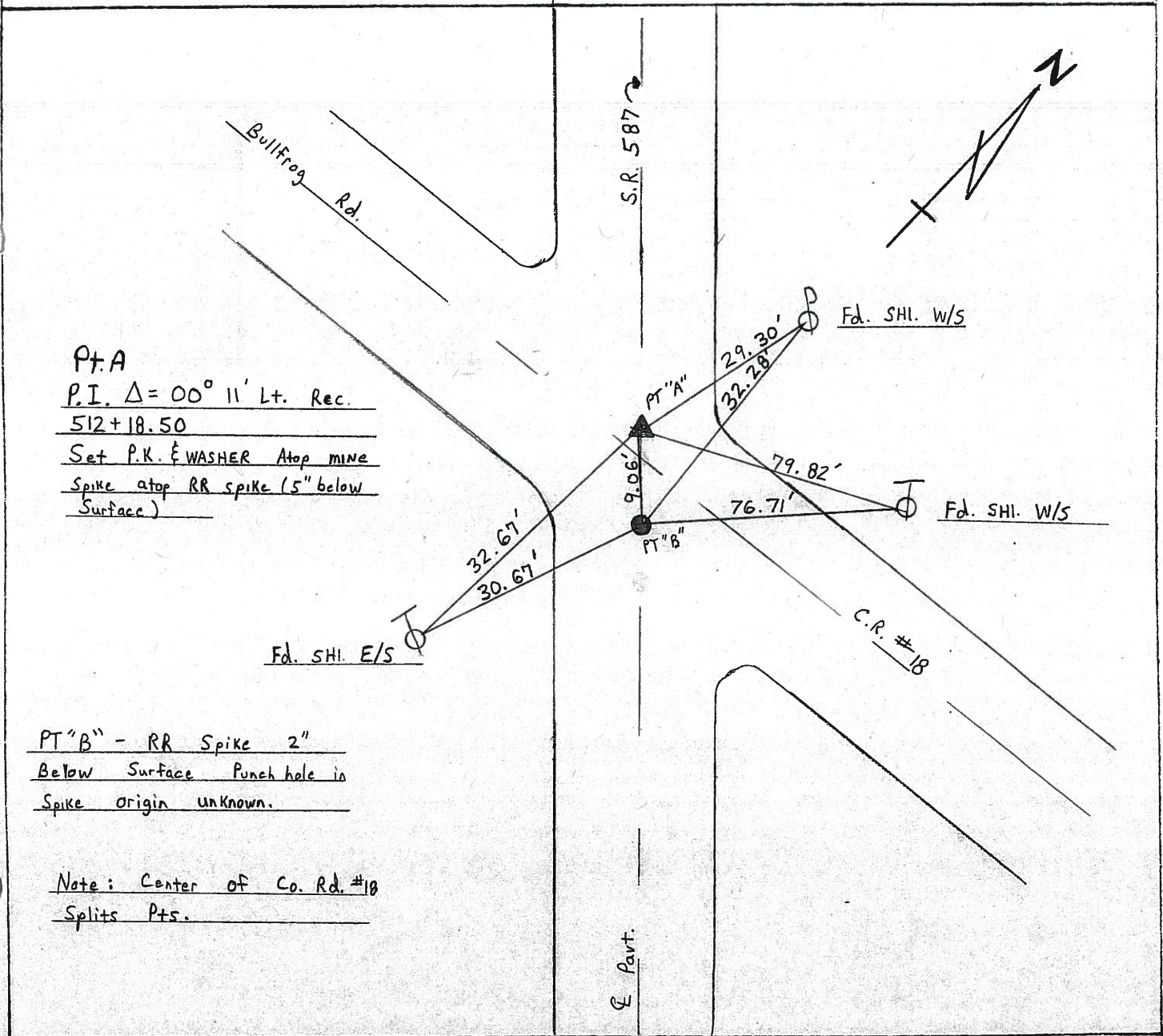
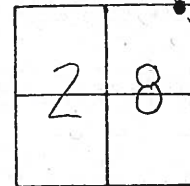
ON SURFACE - BELOW ON Surface

LEFT - ☉ PAV'T. - RIGHT ☉ of S.R. 587

TO EDGE PAVEMENT

S.L.M. 513 + 06

28-A



Q.D.O.T. DISTRICT 2 SURVEY OFFICE

SHEET _____ OF _____

County Seneca S.R. #587

Date 11/13/84

Township Loudon

Weather sunny

Section 28

Temp. 34°

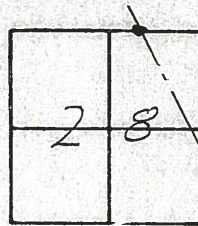
T 2N, R 13E

Personnel Cronin

Ripple

Geymen

Barbour



28-A

Bullfrog Rd.

S.R. #587

P.I. A=00° 11 Lt. Rec.

512 + 18.50

Set P.K. & washer atop minia
spike atop R.R. spike (5" below
surface

