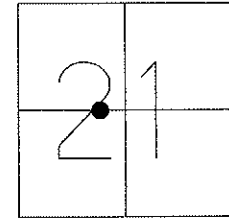


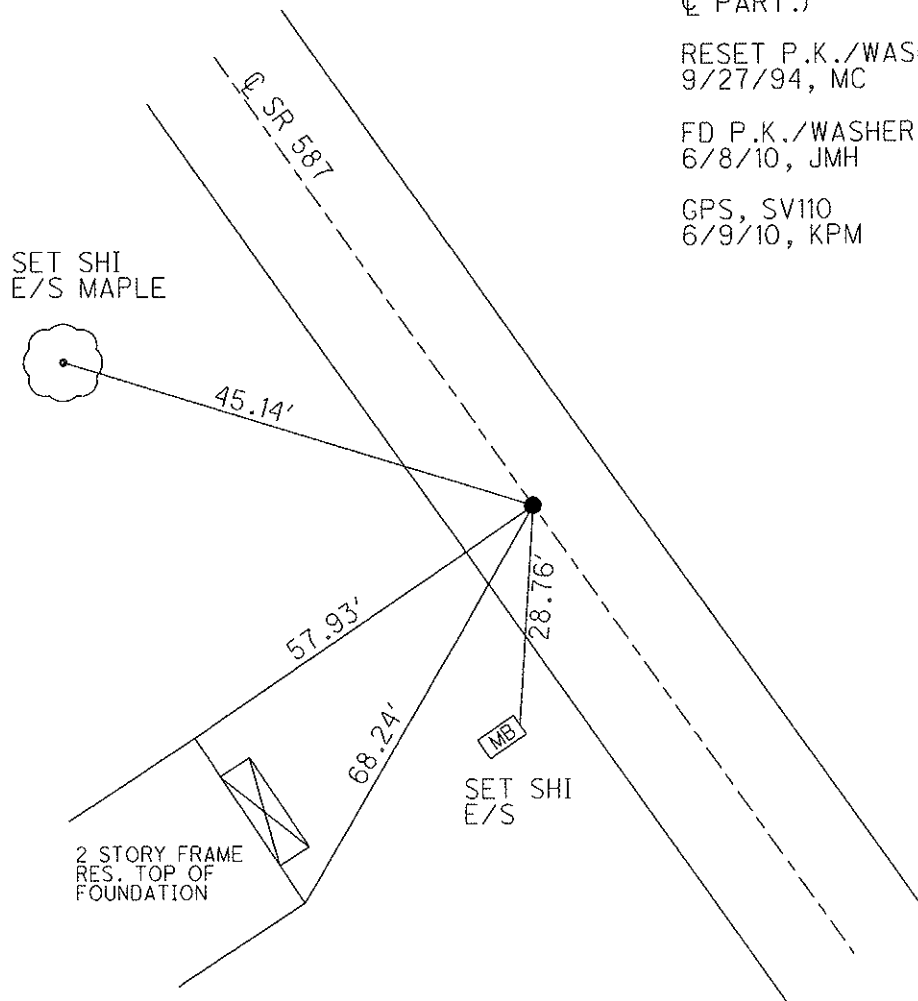
O.D.O.T. DISTRICT 2 SURVEY OFFICE

PERSONNEL	REFERENCE NO. <u>29</u>	SHEET <u>10</u> OF <u>18</u>
NOTES <u>LUMBREZER</u>	DATE <u>6/27/11</u>	ROUTE <u>SR 587</u>
H.C. <u>LUMBREZER</u>	WEATHER <u>GOOD</u>	COUNTY <u>SENECA</u>
R.C. <u>FINGER</u>	TEMP. <u>80°</u>	TOWNSHIP <u>LOUDON</u>
		SECTION <u>21</u>
		T <u>2</u> N R <u>13</u> E

TYPE MONUMENT P.K./WASHER
 ON SURFACE - ~~BELOW~~ ON
 LEFT - Q PAV'T - ~~RIGHT~~ 1'
8.5' TO LT EDGE PAVEMENT
 S.L.M. 534+08.60
 Grid: Northing: 528348.4321 Easting: 1727719.5396



P.O.T. (FIELD BK. S.E. 62, PG.3)
 533+30.40. SET P.K./WASHER
 ATOP MINE SPIKE, ATOP R.R.
 SPIKE (6" BELOW SURFACE - 2' LT
 Q PART.)
 RESET P.K./WASHER
 9/27/94, MC
 FD P.K./WASHER
 6/8/10, JMH
 GPS, SV110
 6/9/10, KPM

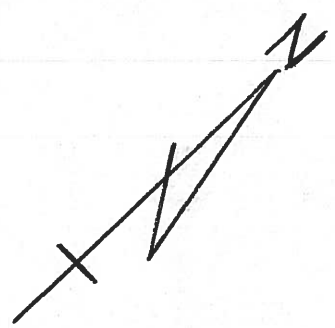
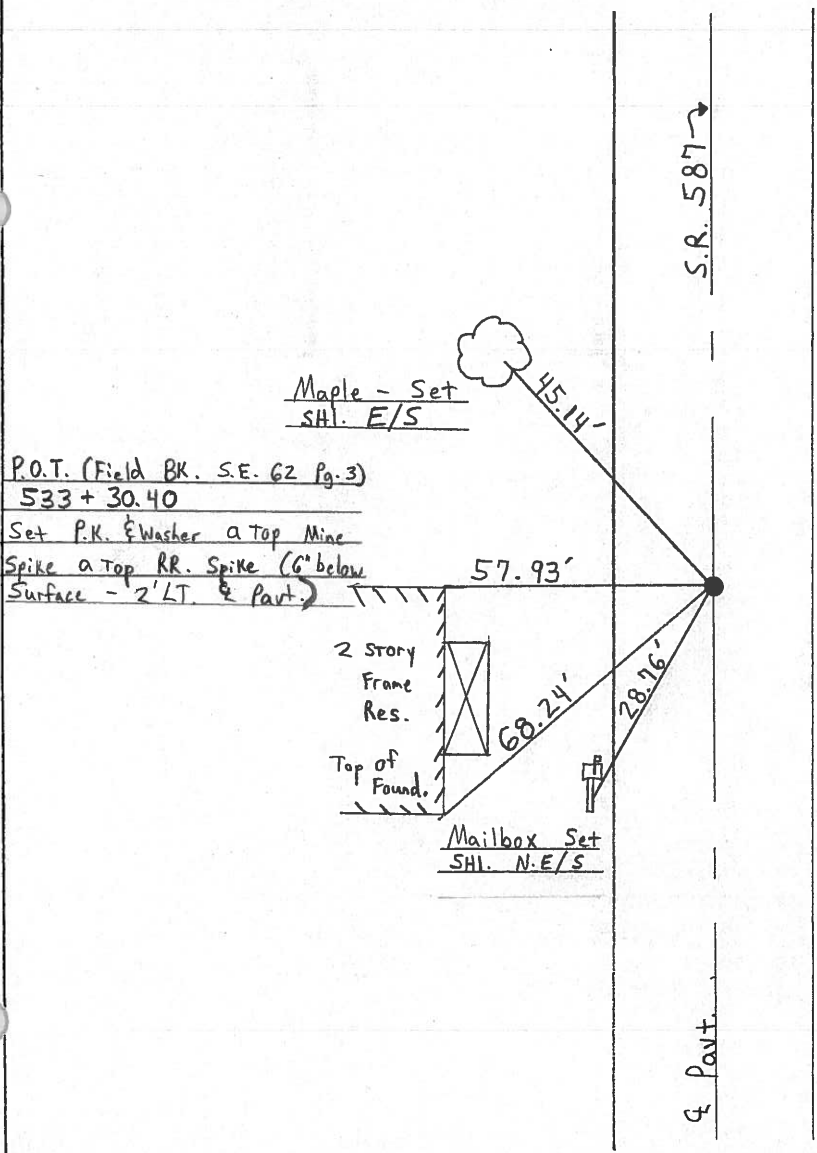
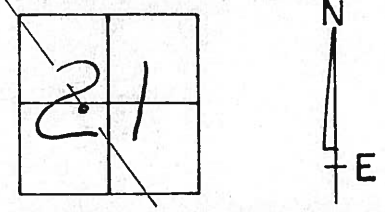


O.D.O.T. DISTRICT 2 SURVEY OFFICE

PERSONNEL _____ REFERENCE NO. 29 SHEET 6 OF 12
 NOTES LOERKE
 H.C. BARBOUR DATE 5-4-94 ROUTE S.R. 587
 R.C. GEYMAN WEATHER FAIR COUNTY Seneca
 _____ TEMP. +58 TOWNSHIP Loudon
 _____ SECTION 21

T 2 N R 13 E

TYPE MONUMENT PK/WASHER ^{RESET} 9-27-94 _{m.c.}
 ON SURFACE - ~~BELOW~~ ON Surface
 LEFT - ¢ PAV'T. - RIGHT 1' LT. ¢
8.5' TO LT. EDGE PAVEMENT
 S.L.M. 534 + 33



ODOT. DISTRICT 2 SURVEY OFFICE

County Seneca S.R. #587

Township Loudon

Section 21

T²N, R¹³E

Personnel Cronin

Ripple

Geyman

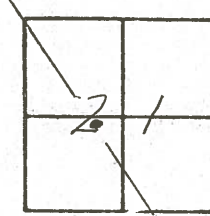
Barbour

29

Date 11/13/84

Weather sunny - windy

Temp. 34°

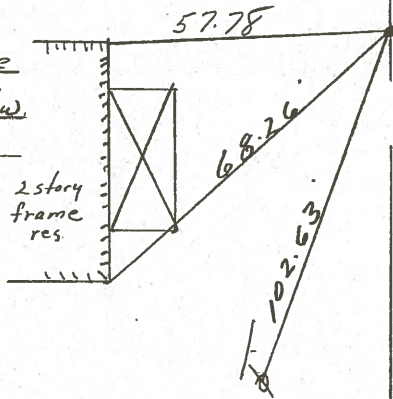


S.R. #587

P.O.T. (Field Bk S.E. 62 Pg. 3)

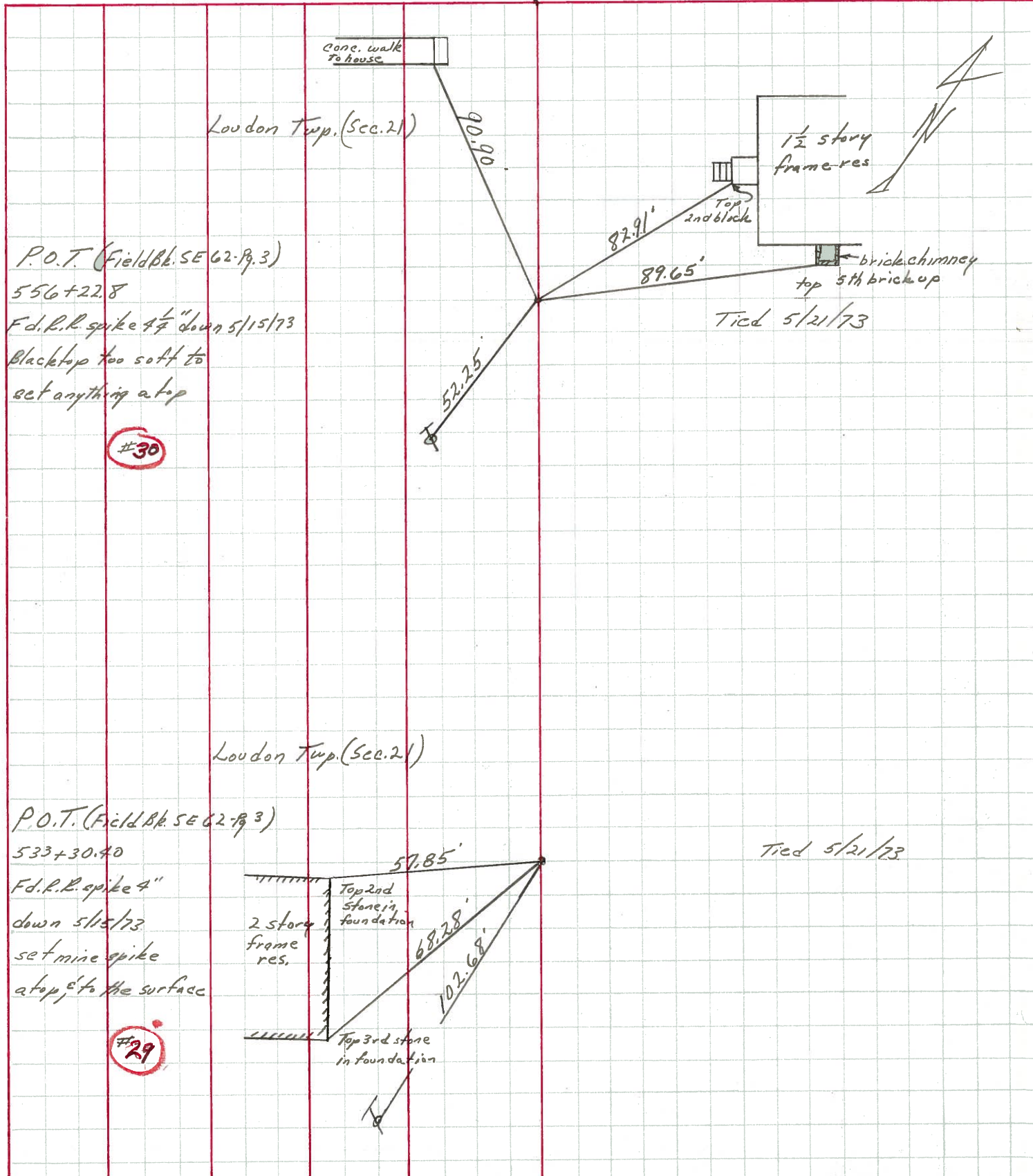
533+30.40

Set P.K. & washer atop mine
 spike atop R.R. spike (6" below)
 surface - 2' Lt. & Pavement



PERSONNEL	TITLE	PERSONNEL	TITLE	COUNTY	Seneca	DATE	5/21/73
Cronin				S. R.	#587	WEATHER	sunny
Ash				SEC.		TEMP.	70°
Ripple							
Anderson							

DESCRIPTION Ties for Control Points - Wyandot - Seneca Co. Line - N.W. JOB NO. _____



P.O.T. (Field Bk. SE 62-R. 3)
 556+22.8
 F.d.R.R. spike 4 1/2" down 5/15/73
 Blacktop too soft to
 set anything at top

#30

P.O.T. (Field Bk. SE 62-R. 3)
 533+30.40
 F.d.R.R. spike 4"
 down 5/15/73
 set mine spike
 at top, 6" to the surface

#29

Loudon Twp. (Sec. 21)

Loudon Twp. (Sec. 21)

Tied 5/21/73

Tied 5/21/73