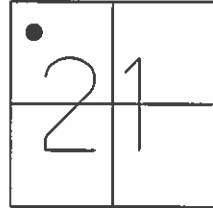


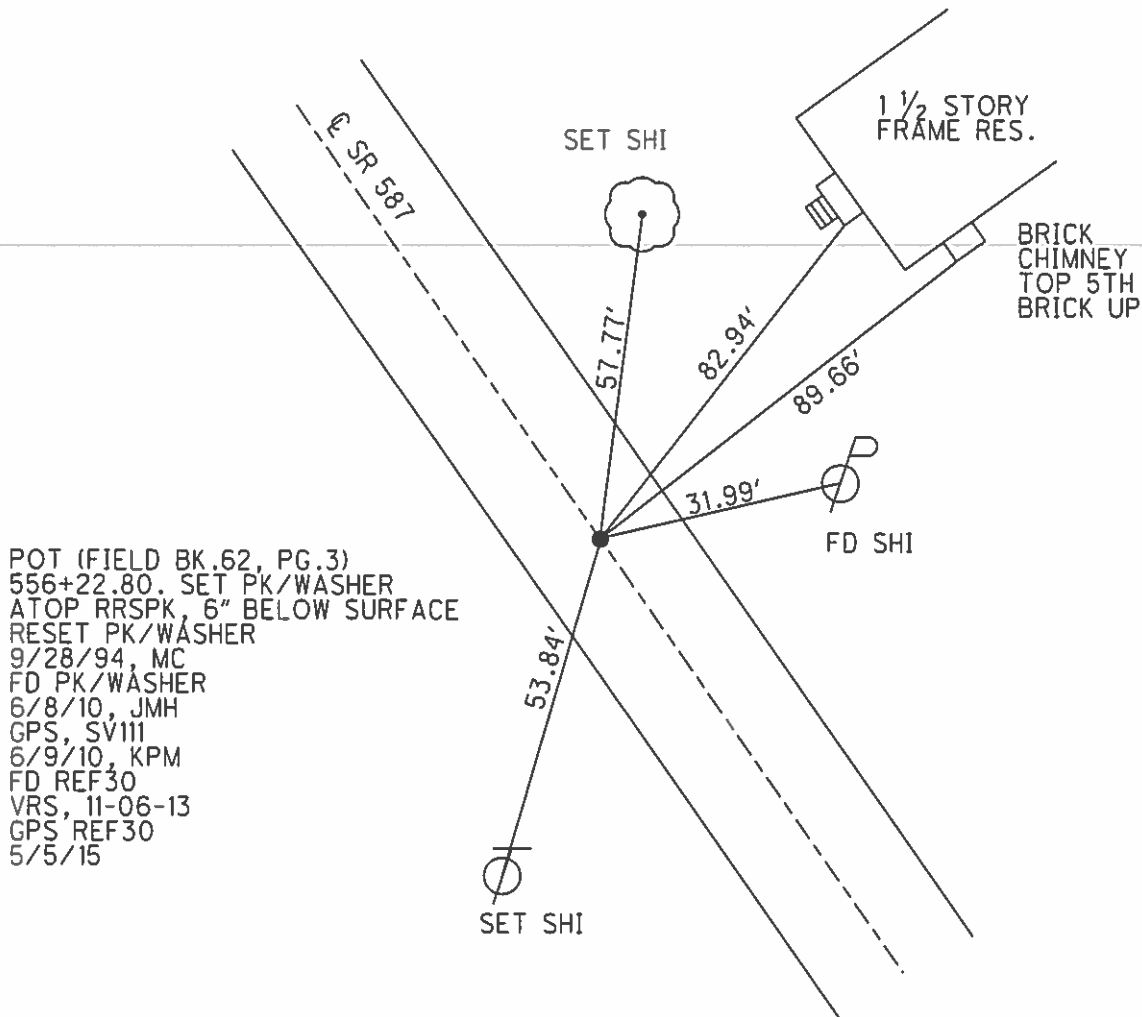
O.D.O.T. DISTRICT 2 SURVEY OFFICE (USE ONLY)

PERSONNEL _____ REFERENCE NO. 30 SHEET 11 OF 18
 NOTES LUMBREZER DATE 6/27/11 ROUTE SR 587
 H.C. LUMBREZER WEATHER GOOD COUNTY SENECA
 R.C. FINGER TEMP. 80° TOWNSHIP LOUDON
 _____ SECTION 21
 _____ T 2 N R 13 E

TYPE MONUMENT _____ P.K./WASHER _____
 ON SURFACE - ~~BELOW~~ _____ ON _____
 LEFT - ☉ PAV'T - RIGHT _____ ON _____
11' TO RT EDGE PAVEMENT
 S.L.M. 556+88.06



GRID: NORTHING: 530272.0824 EASTING: 1726470.9834



POT (FIELD BK.62, PG.3)
 556+22.80. SET PK/WASHER
 ATOP RRSPK, 6" BELOW SURFACE
 RESET PK/WASHER
 9/28/94, MC
 FD PK/WASHER
 6/8/10, JMH
 GPS, SV111
 6/9/10, KPM
 FD REF30
 VRS, 11-06-13
 GPS REF30
 5/5/15

O.D.O.T. DISTRICT 2 SURVEY OFFICE

PERSONNEL

REFERENCE NO. 30

SHEET 7 OF 12

NOTES Loehrke

H.C. BARBOUR

R.C. GEYMAN

DATE 5-4-94

WEATHER FAIR

TEMP. +58

ROUTE S.R. 587

COUNTY Seneca

TOWNSHIP Loudon

SECTION 21

T 2 N R 13 E

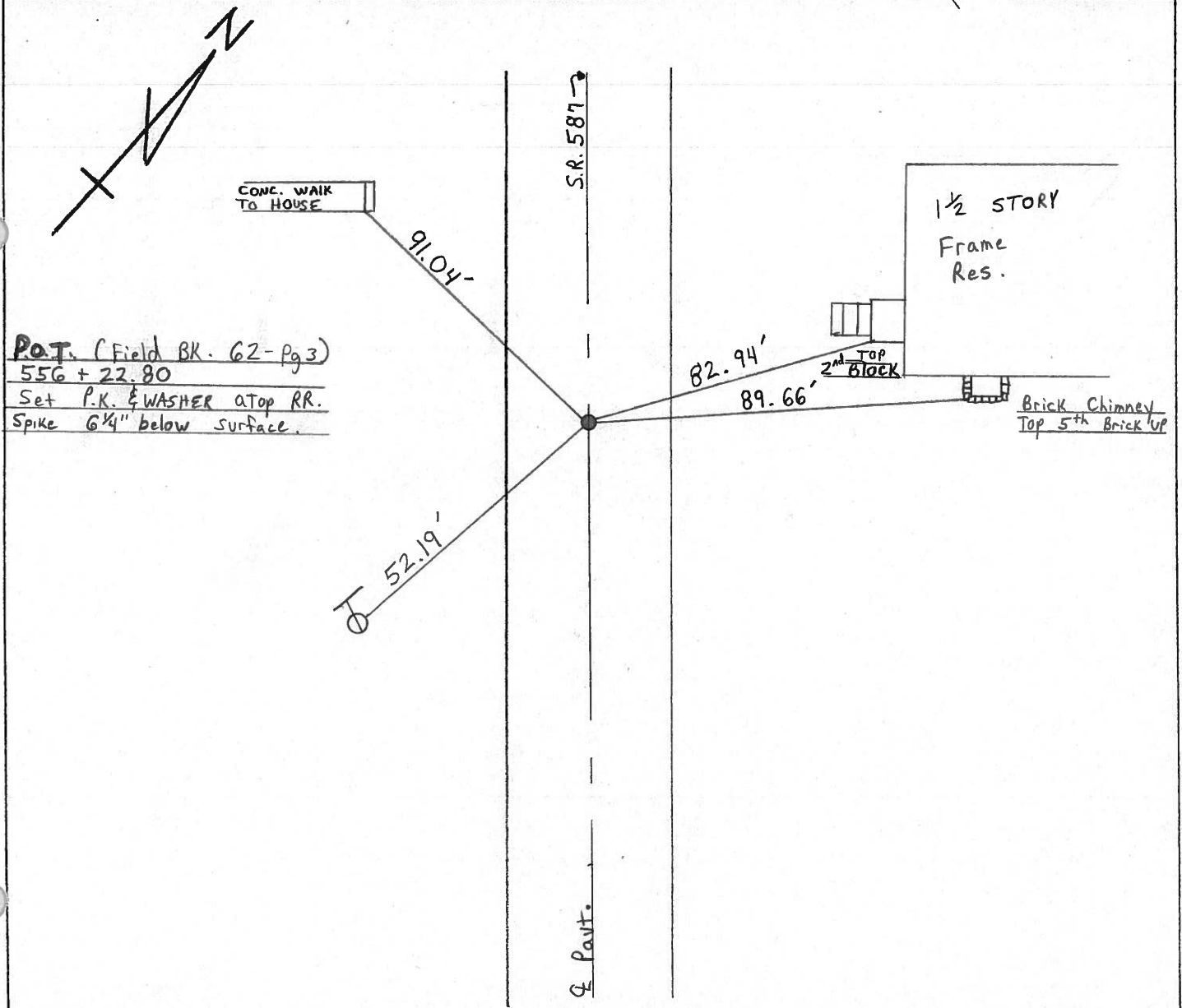
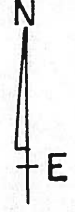
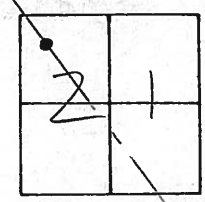
TYPE MONUMENT PK/WASHER Reset 9-28-94 m.c.

ON SURFACE - ~~BELOW~~ ON Surface

LEFT - ~~Q~~ PAV'T. - ~~RIGHT~~ ON ~~Q~~ Pav't.

11' TO RT. EDGE PAVEMENT

S.L.M. 557 + 31



Q.D.O.T. DISTRICT 2 SURVEY OFFICE

SHEET _____ OF _____

County Seneca S.R. #587

Date 11/13/84

Township Loudon

Weather sunny-windy

Section 21

Temp. 34°

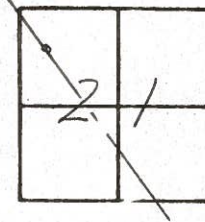
T2N, R13E

Personnel Cronin

Ripple

Geyman

Barbour



30

conc. walk
to house

91.00'

E.S.R. #587A

82.90'

top
2nd
block

89.65'

1 1/2 story
frame res.

brick chimney
top 5th brick up

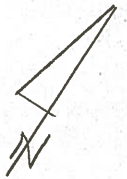
52.20'

P.O.T. (Field Bk. 62 Pg. 3)

556 + 22.80

Set P.K. & washer atop RR.

Spike 6 3/4" below surface



PERSONNEL	TITLE	PERSONNEL	TITLE	COUNTY	DATE	WEATHER	TEMP.
Cronin				Seneca	5/21/73	sunny	70°
Ash				S. R. #587			
Ripple							
Anderson				SEC.			

DESCRIPTION Ties for Control Points - Wyandot - Seneca Co. Line - N.W. JOB NO. _____

