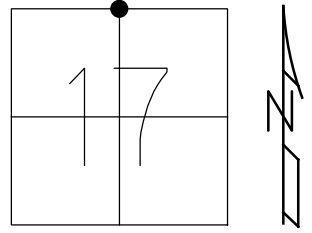


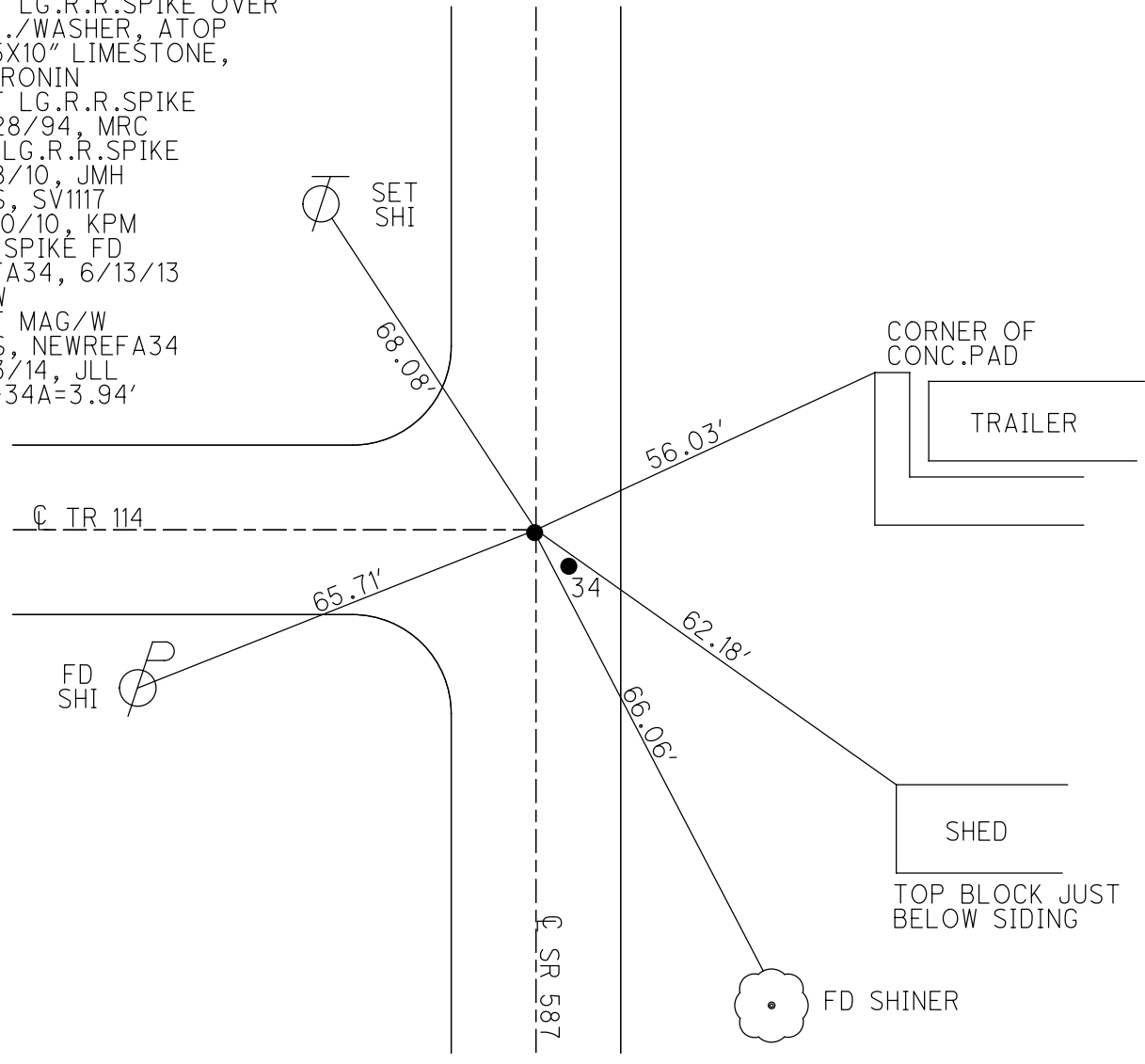
O.D.O.T. DISTRICT 2 SURVEY OFFICE (USE ONLY)

PERSONNEL \_\_\_\_\_ REFERENCE NO. 34 A SHEET 17 OF 18  
 NOTES WESTFALL DATE 6/13/13 ROUTE SR 587  
 H.C. ROUSOS WEATHER SUNNY COUNTY SENECA  
 R.C. HOMAN TEMP. 85° TOWNSHIP LOUDON  
 \_\_\_\_\_ SECTION 17  
 \_\_\_\_\_ T 2 N R 13 E

TYPE MONUMENT \_\_\_\_\_ LG.R.R.SPIKE \_\_\_\_\_  
 ON SURFACE - ~~BELOW~~ \_\_\_\_\_ ON \_\_\_\_\_  
 LEFT - ☉ PAV'T - ~~RIGHT~~ \_\_\_\_\_ 1' \_\_\_\_\_  
 \_\_\_\_\_ 9' TO RT \_\_\_\_\_ EDGE PAVEMENT  
 S.L.M. \_\_\_\_\_ 637+03.28  
 GRID: NORTHING: 537194.300 EASTING: 1722842.682



RECORD: 5/29/73  
 SET LG.R.R.SPIKE OVER  
 P.K./WASHER, ATOP  
 4X5X10" LIMESTONE,  
 J.CRONIN  
 SET LG.R.R.SPIKE  
 9/28/94, MRC  
 FD LG.R.R.SPIKE  
 6/8/10, JMH  
 GPS, SV1117  
 6/10/10, KPM  
 RR SPIKE FD  
 REFA34, 6/13/13  
 EBW  
 SET MAG/W  
 GPS, NEWREFA34  
 7/3/14, JLL  
 34-34A=3.94'



O.D.O.T. DISTRICT 2 SURVEY OFFICE

PERSONNEL

REFERENCE NO. 34 A

SHEET 17 OF 18

NOTES HARBAUGH

DATE 7/5/11

ROUTE SR 587

H.C. LUMBREZER

WEATHER SUNNY

COUNTY SENECA

R.C. MOSEY

TEMP. 85°

TOWNSHIP LOUDON

SECTION 17

T 2 N R 13 E

TYPE MONUMENT LG.R.R.SPIKE

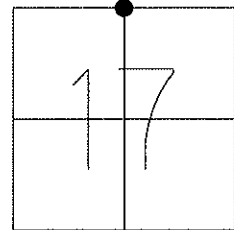
ON SURFACE - ~~BELOW~~ ON \_\_\_\_\_

~~LEFT~~ - Q PAV'T - RIGHT 1'

9' TO RT EDGE PAVEMENT

S.L.M. 637+03.28

Grid: Northing: 537194.2764 Easting: 1722842.6656

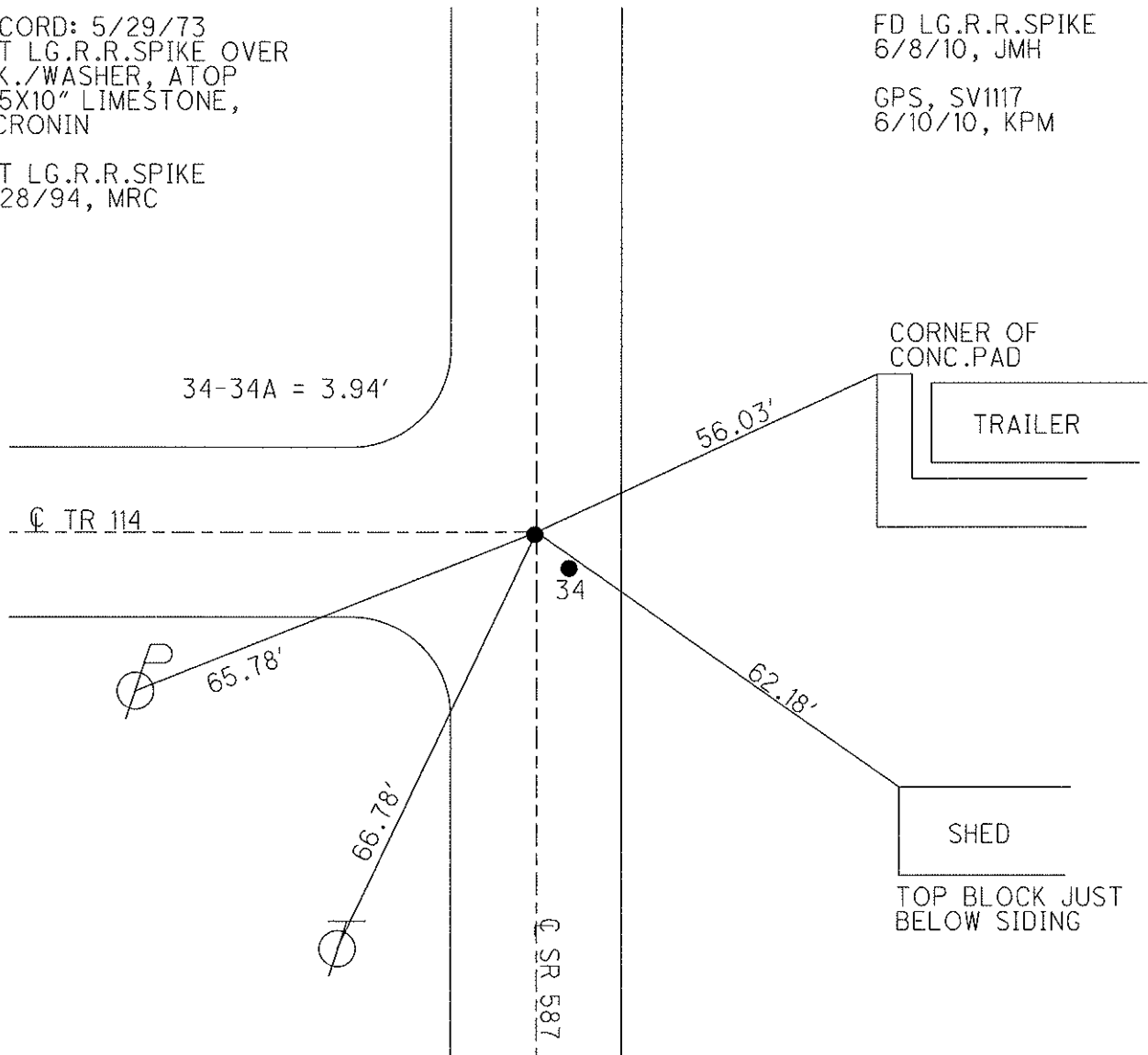


RECORD: 5/29/73  
SET LG.R.R.SPIKE OVER  
P.K./WASHER, ATOP  
4X5X10" LIMESTONE,  
J.CRONIN

SET LG.R.R.SPIKE  
9/28/94, MRC

FD LG.R.R.SPIKE  
6/8/10, JMH

GPS, SV1117  
6/10/10, KPM



# O.D.O.T. DISTRICT 2 SURVEY OFFICE

PERSONNEL \_\_\_\_\_

REFERENCE NO. 34

SHEET 11 OF 12

NOTES LOHRKE

H.C. BARBOUR

R.C. GEYMAN

DATE 5-4-94

WEATHER FAIR

TEMP. +56

ROUTE S.R. 587

COUNTY SENECA

TOWNSHIP Loudon

SECTION 17

T.2. NR. 13 E

TYPE MONUMENT P.K./WASHER

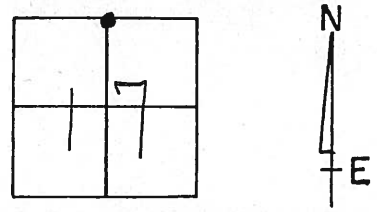
ON SURFACE - ~~BELOW~~ Yes

LEFT - 0 PAV'T. - RIGHT A=25' Lt B=1' Rt

11.5 TO Rt EDGE PAVEMENT B=9' Rt EP

S.L.M. 637+48

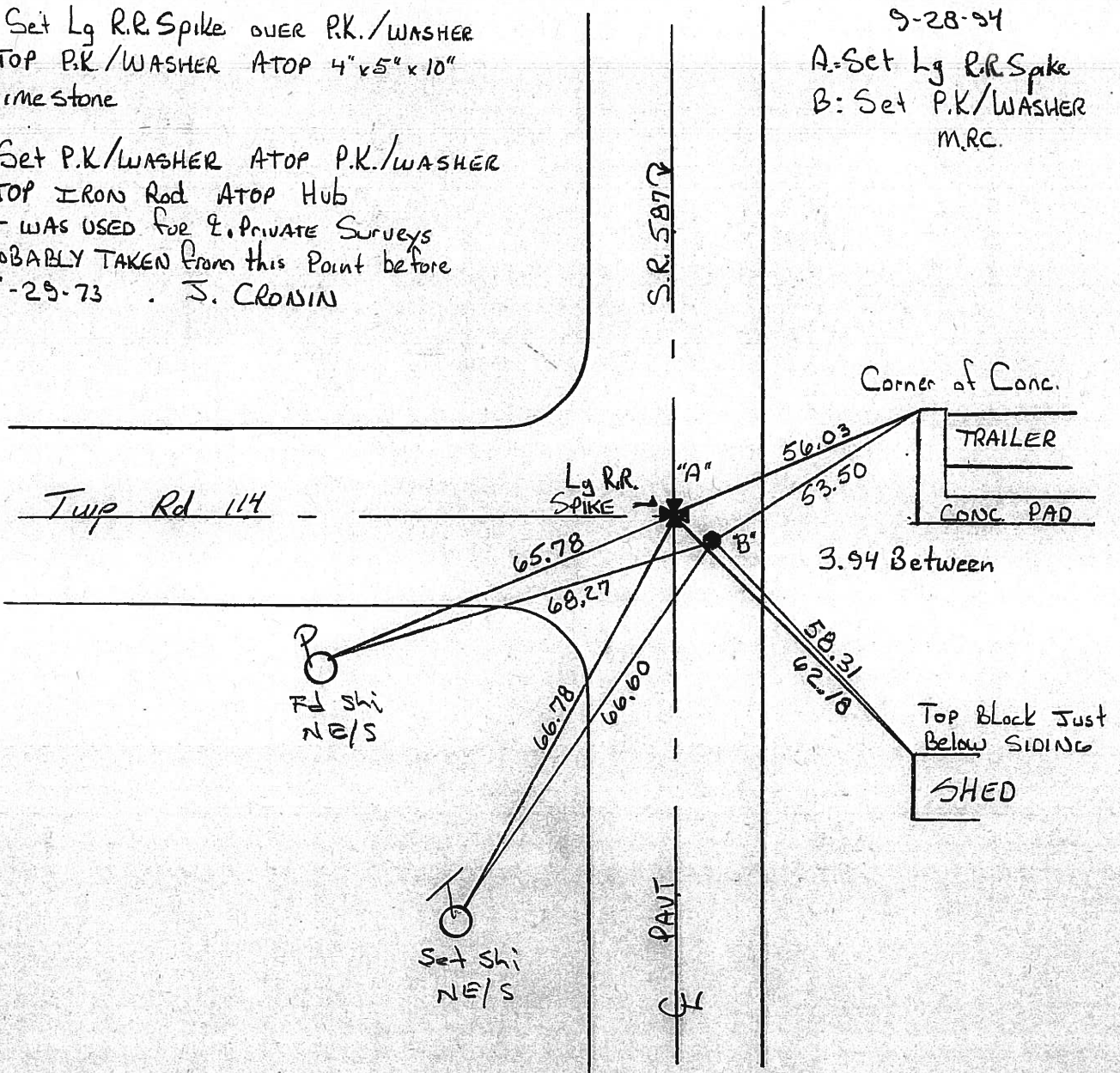
34-A



A = Set Lg R.R. Spike over P.K./WASHER  
 ATOP P.K./WASHER ATOP 4" x 5" x 10"  
 Limestone

B = Set P.K./WASHER ATOP P.K./WASHER  
 ATOP IRON Rod ATOP Hub  
 PT WAS USED for 2 PRIVATE SURVEYS  
 PROBABLY TAKEN from this Point before  
 5-29-73 . J. CRONIN

9-28-94  
 A = Set Lg R.R. Spike  
 B = Set P.K./WASHER  
 M.R.C.





Q.D.O.T. DISTRICT 2 SURVEY OFFICE

SHEET \_\_\_\_\_ OF \_\_\_\_\_

County Seneca S.R. 4587

Date 11/13/84

Township London

Weather sunny

Section 17

Temp. 40°

T2N, R13E

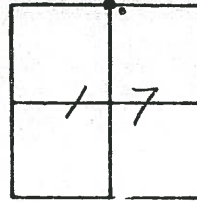
Personnel Cronin

Ripple

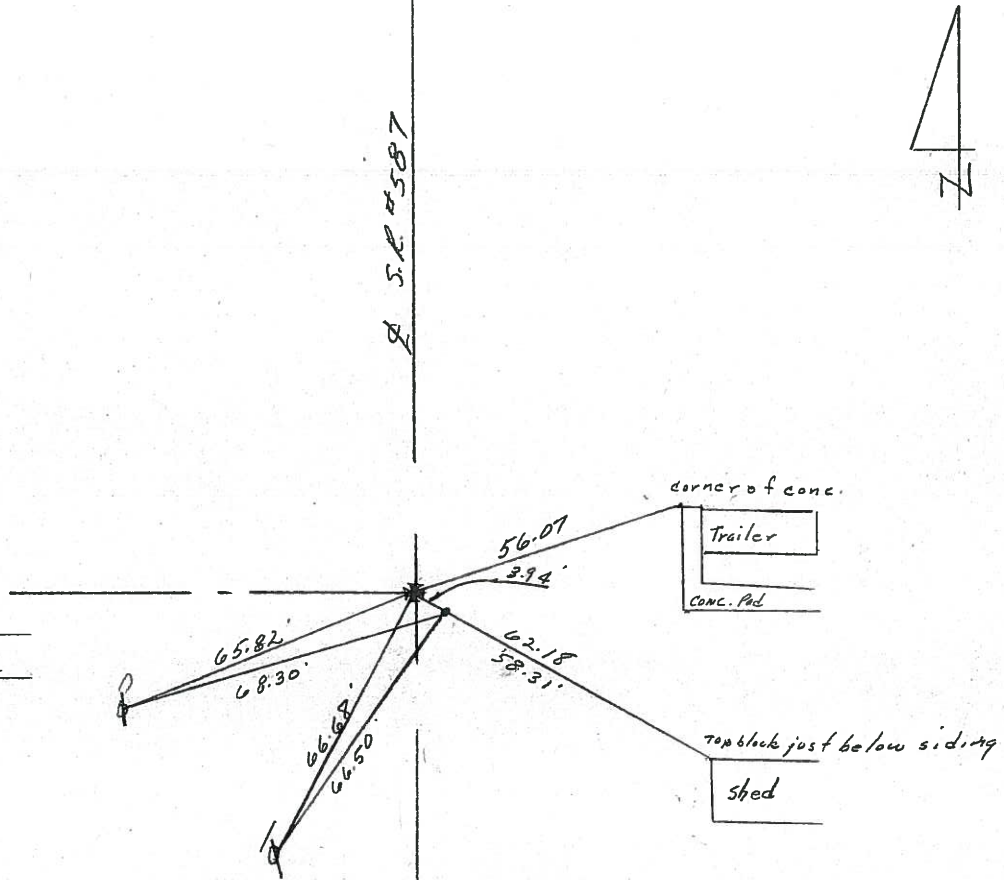
Geyman

Barbour

34-A



Corner Stone 11"  
below surface (4x5x10"  
limestone) set P.K. & washer  
atop P.K. & washer atop stone

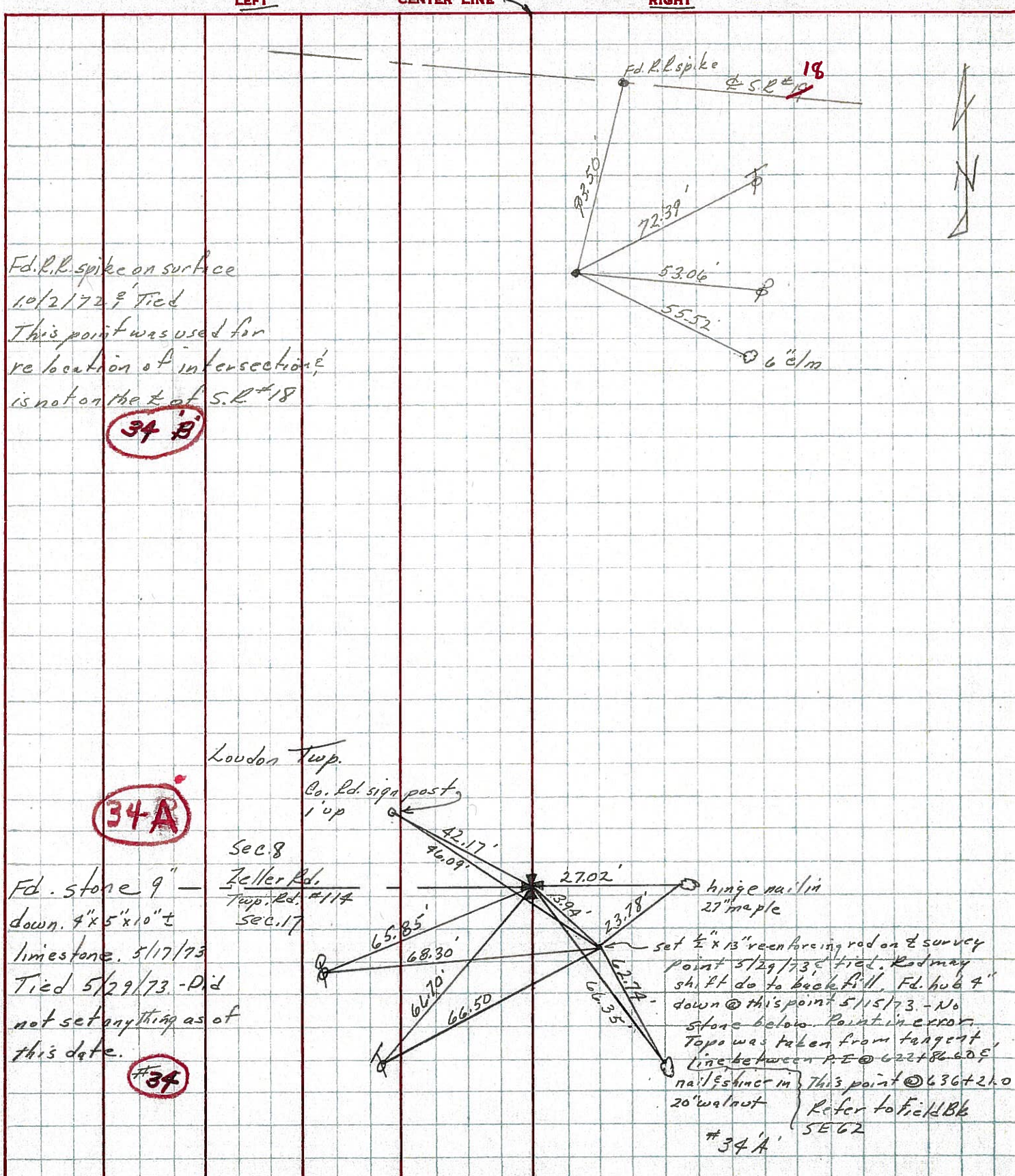


set iron rod atop hub 5/29/73 - set  
P.K. & washer 11/13/84  
Point was used for private surveys  
probably taken from this point before  
5/29/73.



PERSONNEL	TITLE	PERSONNEL	TITLE	COUNTY	DATE
Cronin				Seneca	5/29/73
Ash				S. R. #587	WEATHER cloudy
Pipple				SEC.	TEMP. 70°
Anderson - Sick Leave					

DESCRIPTION Ties for Control Points - Wyoandot - Seneca Co. Line N.W JOB NO.



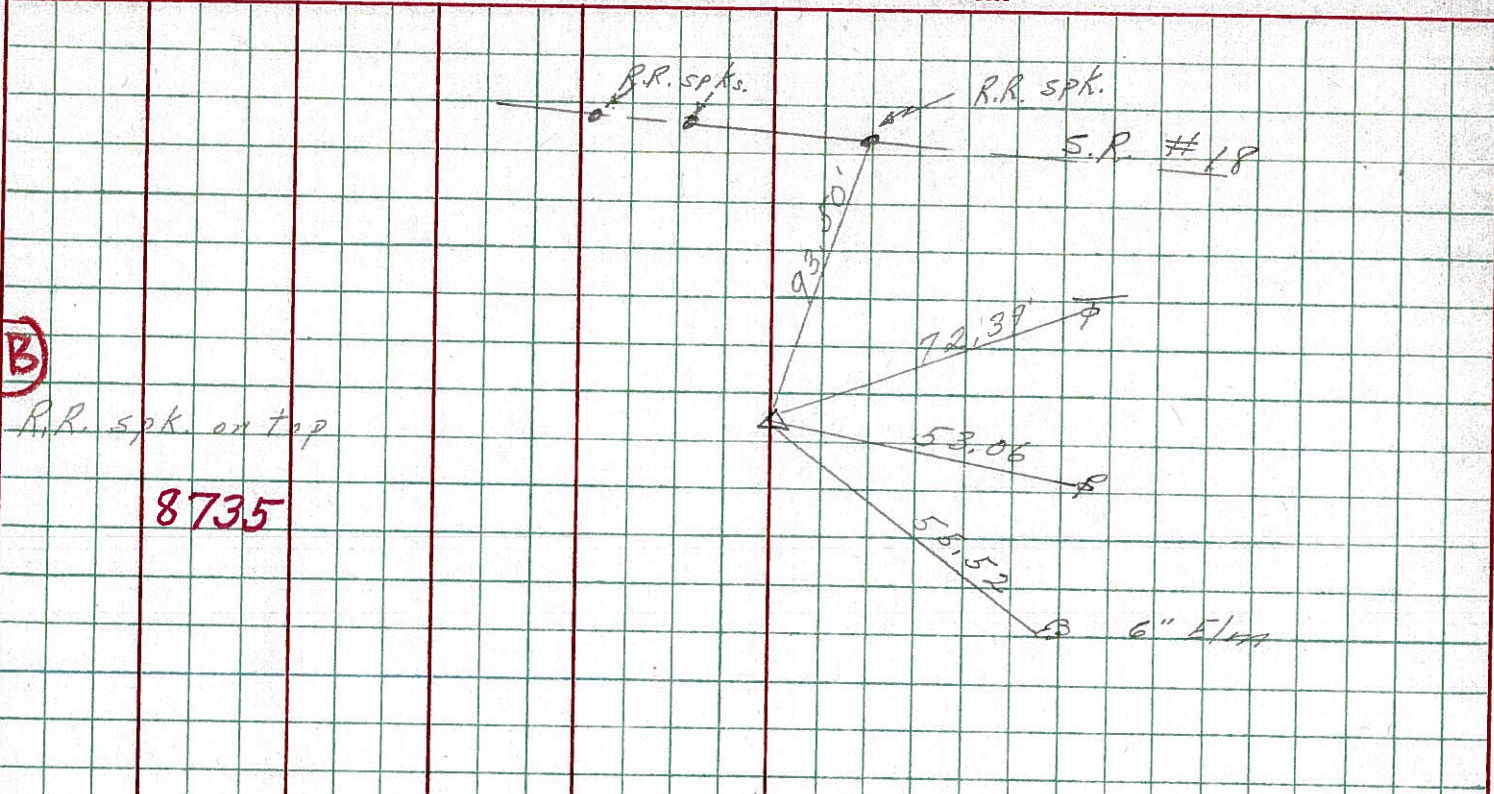


PERSONNEL TITLE PERSONNEL TITLE  
 Schneider \_\_\_\_\_  
 Mosser \_\_\_\_\_  
 Barbour \_\_\_\_\_  
 Potts \_\_\_\_\_

COUNTY Seneca DATE 11-12-69  
 S. R. 587 WEATHER Windy  
 SEC. \_\_\_\_\_ TEMP. 45°

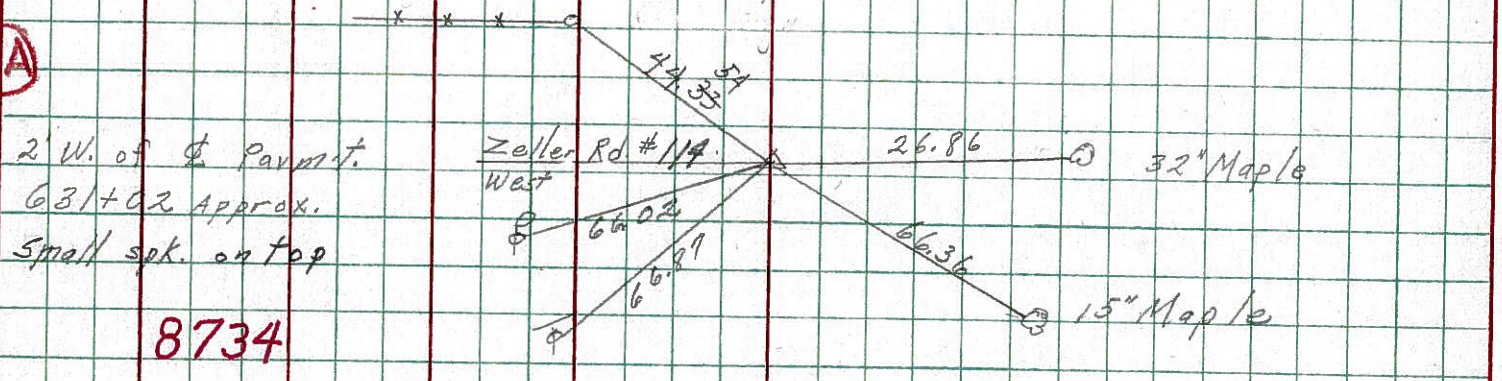
DESCRIPTION U.S. 224 to S.R. 18 JOB NO. \_\_\_\_\_  
 LEFT CENTER LINE RIGHT

34-B



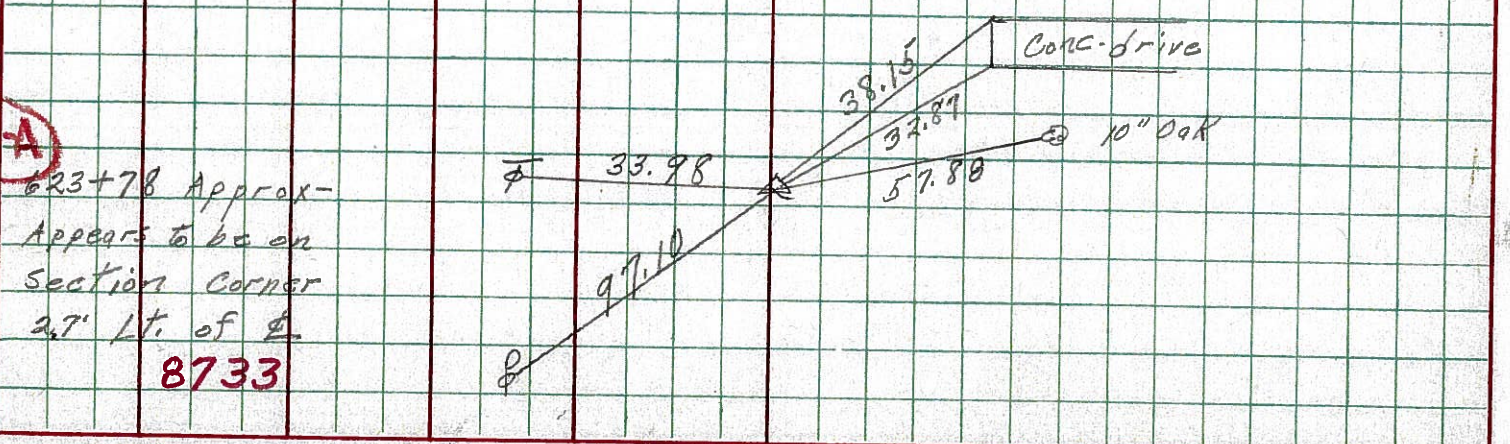
8735

34-A



8734

33-A



8733