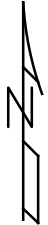
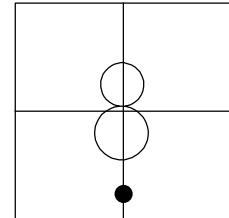


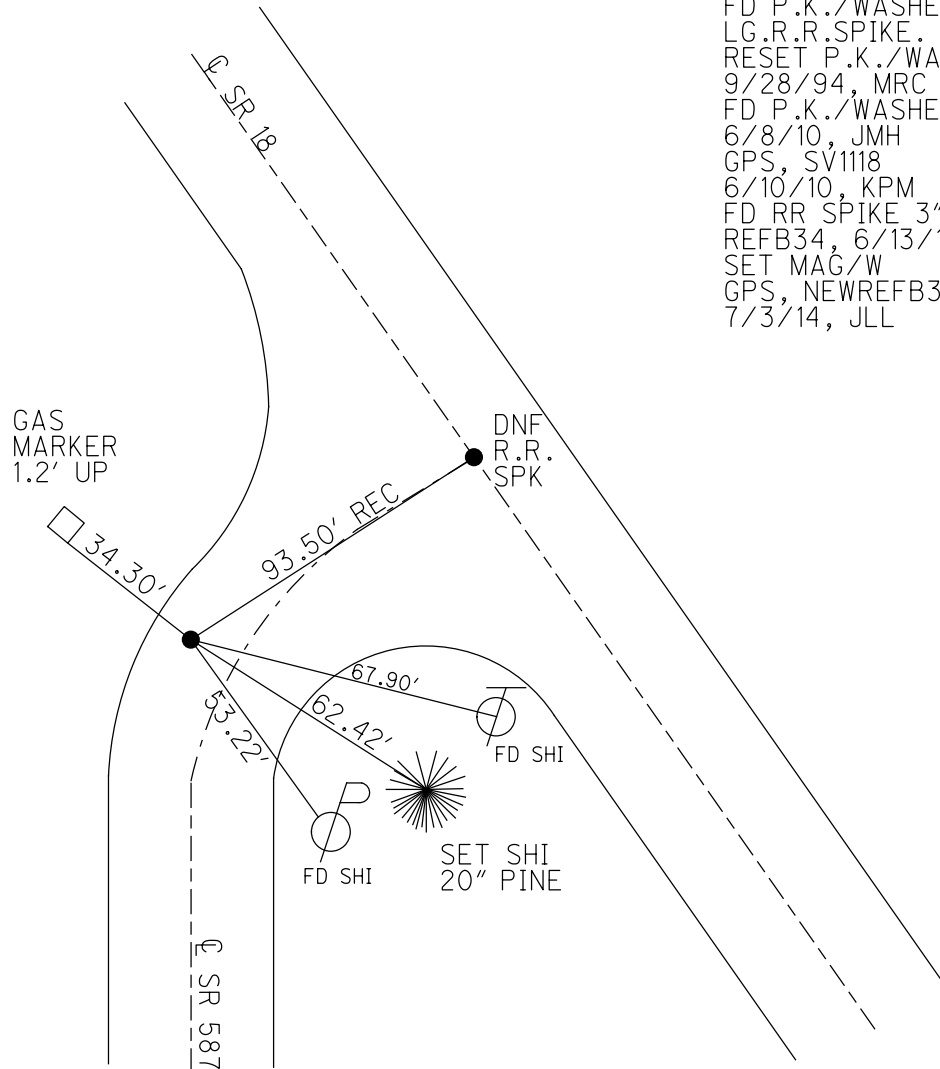
O.D.O.T. DISTRICT 2 SURVEY OFFICE (USE ONLY)

PERSONNEL	REFERENCE NO.	34 B	SHEET	18	OF	18
NOTES	WESTFALL	DATE	6/13/13	ROUTE	SR 587	
H.C.	ROUSOS	WEATHER	SUNNY	COUNTY	SENECA	
R.C.	HOMAN	TEMP.	85°	TOWNSHIP	LOUDON	
				SECTION	8	
				T	2	N
				R	13	E

TYPE MONUMENT _____ RR SPIKE _____
~~ON SURFACE~~ - BELOW _____ 3" _____
 LEFT - \odot PAV'T - ~~RIGHT~~ _____ 5.5' _____
 _____ 4' TO LT EDGE PAVEMENT _____
 S.L.M. _____ 644+23.62 _____
 GRID: NORTHING: 537914.496 EASTING: 1722850.978



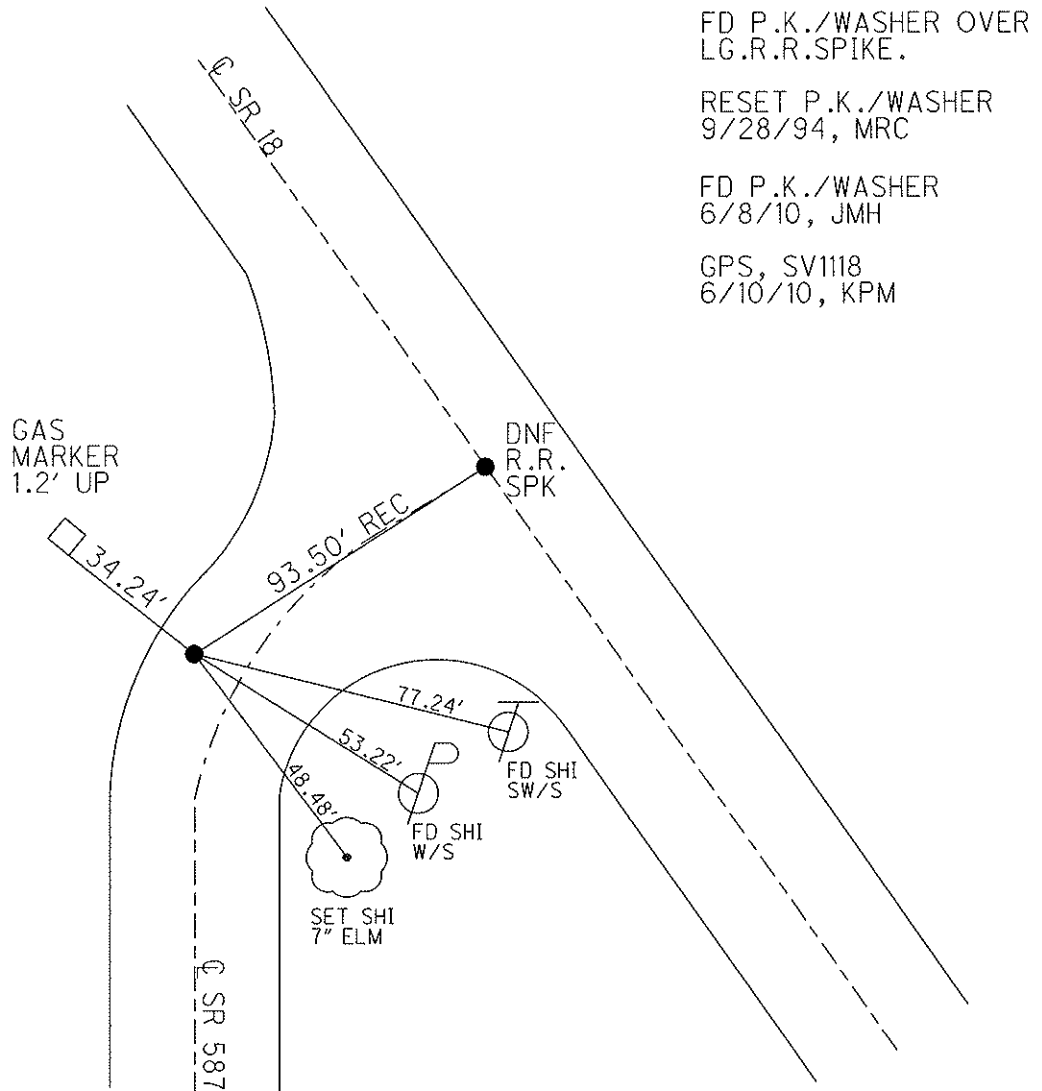
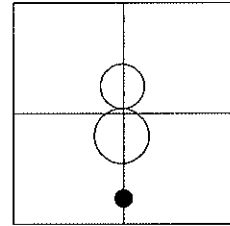
FD P.K./WASHER OVER
 LG.R.R.SPIKE.
 RESET P.K./WASHER
 9/28/94, MRC
 FD P.K./WASHER
 6/8/10, JMH
 GPS, SV1118
 6/10/10, KPM
 FD RR SPIKE 3" DEEP
 REFB34, 6/13/13, EBW
 SET MAG/W
 GPS, NEWREFB34
 7/3/14, JLL



O.D.O.T. DISTRICT 2 SURVEY OFFICE

PERSONNEL _____ REFERENCE NO. 34 B SHEET 18 OF 18
 NOTES HARBAUGH DATE 7/5/11 ROUTE SR 587
 H.C. LUMBREZER WEATHER SUNNY COUNTY SENECA
 R.C. MOSER TEMP. 85° TOWNSHIP LOUDON
 SECTION 8
 T 2 N R 13 E

TYPE MONUMENT P.K./WASHER
~~ON SURFACE~~ - BELOW 1/2"
 LEFT - Q PAV'T - ~~RIGHT~~ 5.5'
4' TO LT EDGE PAVEMENT
 S.L.M. 644+23.62
 Grid: Northing: 537914.5692 Easting: 1722850.8885



FD P.K./WASHER OVER
 LG.R.R.SPIKE.

RESET P.K./WASHER
 9/28/94, MRC

FD P.K./WASHER
 6/8/10, JMH

GPS, SV1118
 6/10/10, KPM

O.D.O.T. DISTRICT 2 SURVEY OFFICE

PERSONNEL

REFERENCE NO. 34-B

SHEET 12 OF 12

NOTES LOEWYKE

H.C. BARBUR

R.C. GEYMAN

DATE 5-4-94

WEATHER FAIR

TEMP. TS6

ROUTE SR 587

COUNTY SENECA

TOWNSHIP LODOW

SECTION 08

T2 N R B E

TYPE MONUMENT P.K./WASHER

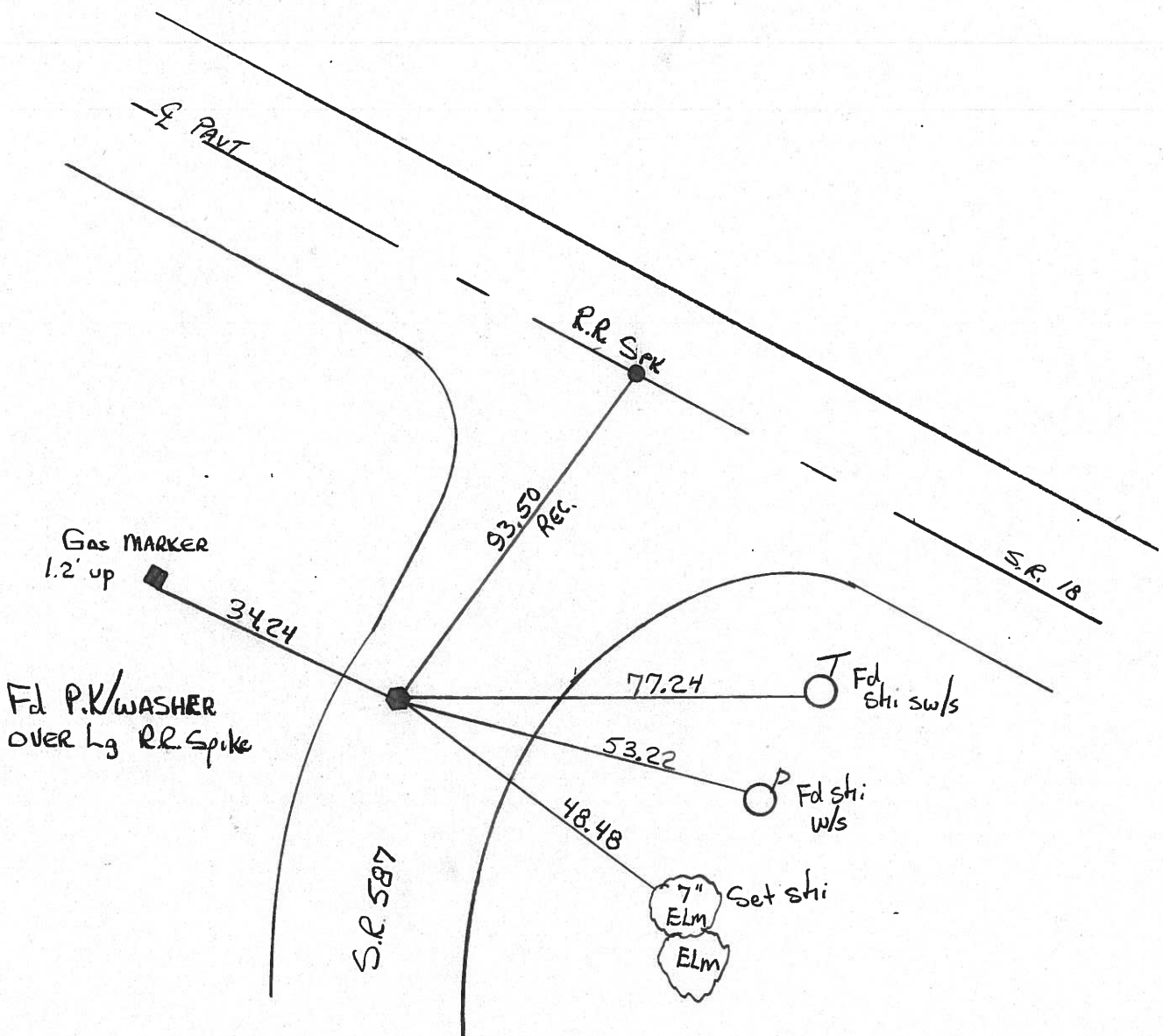
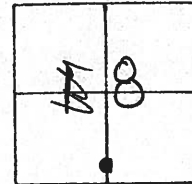
~~ON SURFACE~~ - BELOW 2 1/2" Below

LEFT - 0 PAV'T. - ~~RIGHT~~ 5.5' Lt

4' TO Lt EDGE PAVEMENT

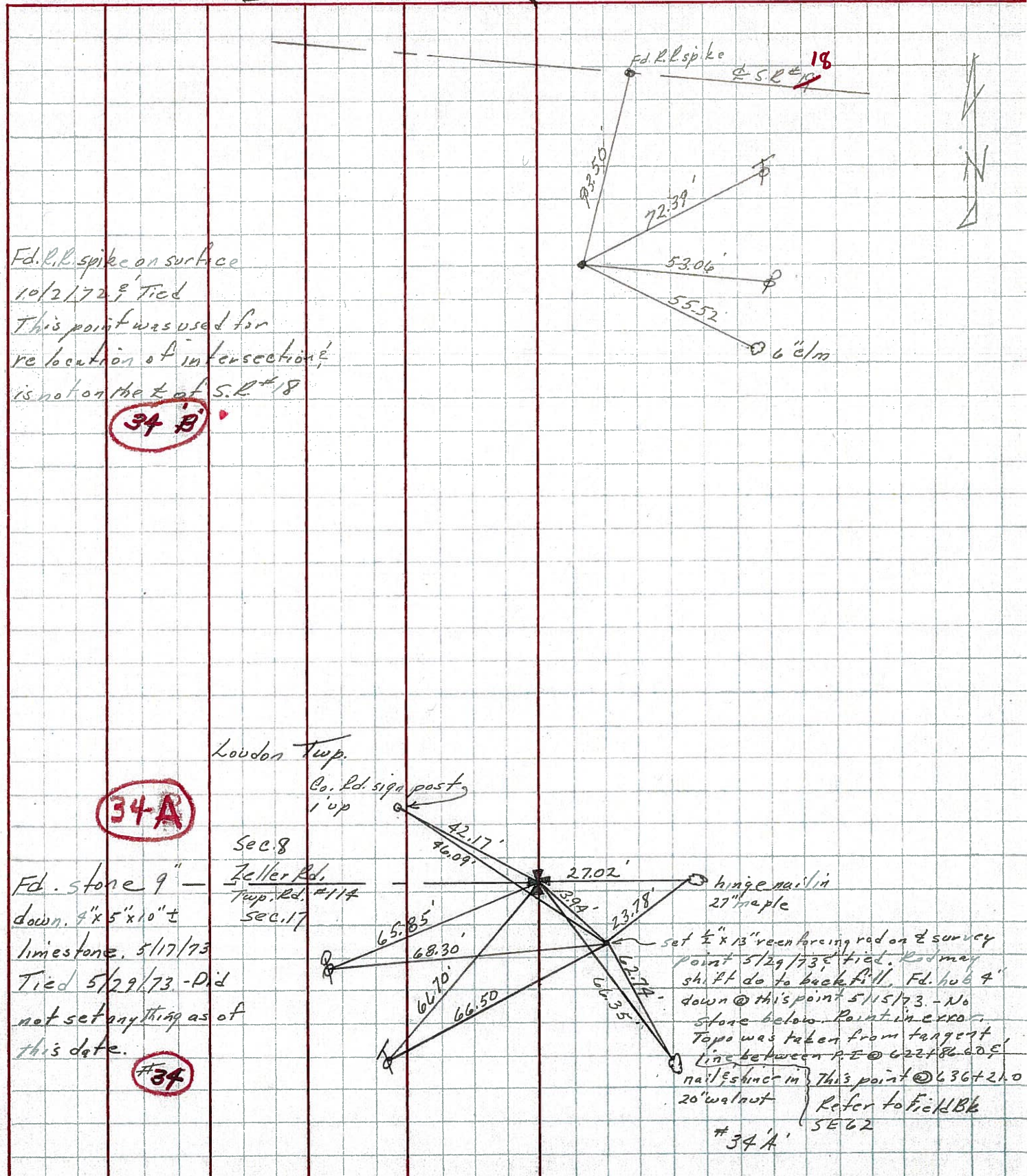
S.L.M. 644771

Reset
9-28-94
MRC.



PERSONNEL	TITLE	PERSONNEL	TITLE	COUNTY	DATE
Cronin				Seneca	5/29/73
Ash				S. R. #587	WEATHER cloudy
Ripple				SEC.	TEMP 70°
Anderson - sick leave					

DESCRIPTION Ties for Control Points Wyandot-Seneca Co. Line N.W. JOB NO.



PERSONNEL TITLE PERSONNEL TITLE
 Schneider _____
 Mosser _____
 Barbour _____
 Potts _____

COUNTY Seneca DATE 11-12-69

S. R. 587 WEATHER Windy

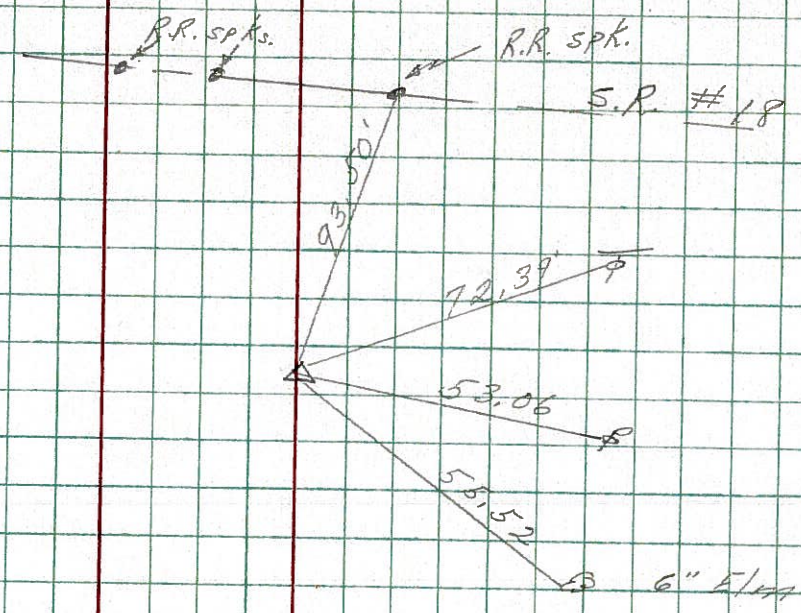
SEC. _____ TEMP. 45°

DESCRIPTION U.S. 224 to S.R. 18

LEFT CENTER LINE RIGHT JOB NO.

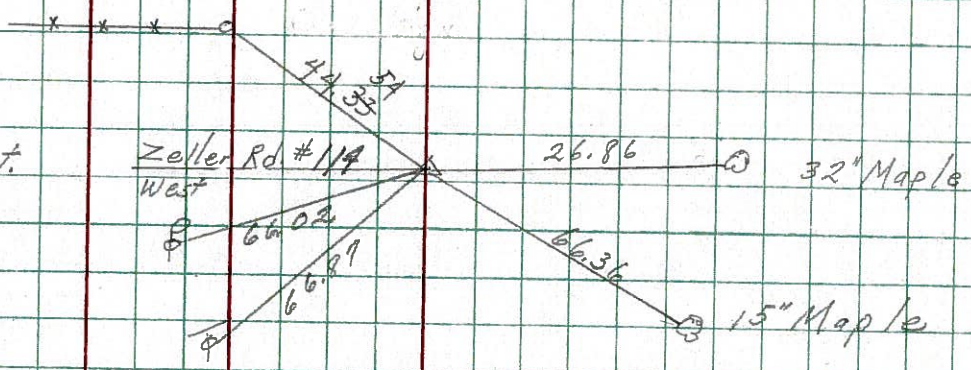
34-B

R.R. spk. on top
 8735



34-A

2' W. of E. Pavmt.
 631+02 Approx.
 Small spk. on top
 8734



33-A

623+78 Approx-
 Appears to be on
 Section Corner
 2.7' Lt. of E.
 8733

