

O.D.O.T. DISTRICT 2 SURVEY OFFICE (USE ONLY)

PERSONNEL

REFERENCE NO. 1

SHEET 1 OF 6

NOTES BARNHEISEL DATE 10/15/99

H.C. CANTERBURY WEATHER SUNNY

R.C. BARNHEISEL TEMP. 60°

ROUTE SR 590

COUNTY SENECA

TOWNSHIP LIBERTY

SECTION 3

T 3 N R 14 E

DWG BY RHOADES PID \_\_\_\_\_

TYPE MONUMENT MAG NAIL

ON SURFACE - ~~BELOW~~ ON \_\_\_\_\_

OFFSET ☉ PAVEMENT 2.4', 2' LT ☉ N LT : ~~RT~~

- TO - EDGE PAVEMENT

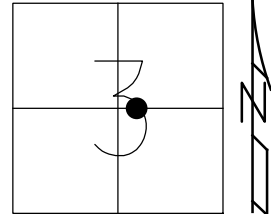
STATION: 2+13.19

HORZ.DATUM: NAD83 2011

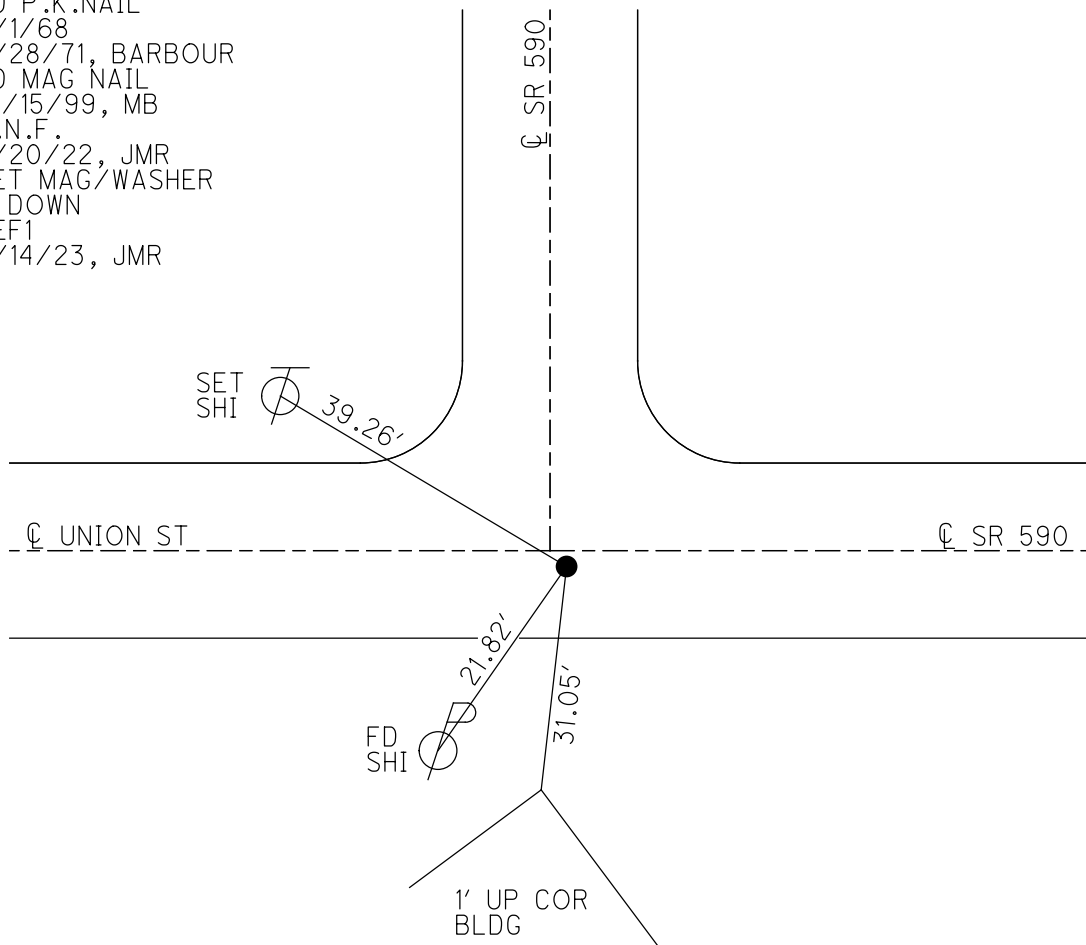
GEOID: NAVD88 2018

GRID: NORTHING: 576520.466

EASTING: 1766461.258



RECORD: P.I.  
 STA. 2+26.7  
 FD P.K. NAIL  
 4/1/68  
 7/28/71, BARBOUR  
 FD MAG NAIL  
 10/15/99, MB  
 D.N.F.  
 7/20/22, JMR  
 SET MAG/WASHER  
 1" DOWN  
 REF1  
 4/14/23, JMR



O.D.O.T. DISTRICT 2 SURVEY OFFICE (USE ONLY)

PERSONNEL

REFERENCE NO. 2

SHEET 2 OF 6

NOTES BARNHISEL

DATE 10/15/99

ROUTE SR 590

H.C. CANTERBURY

WEATHER SUNNY

COUNTY SENECA

R.C. BARNHISEL

TEMP. 60°

TOWNSHIP LIBERTY

DWG BY RHOADES PID \_\_\_\_\_

SECTION 3

T 3 N R 14 E

TYPE MONUMENT 1/2" ID IPIPE

ON SURFACE - ~~BELOW~~ ON \_\_\_\_\_

OFFSET ☉ PAVEMENT 22.3' ~~LF~~ : RT

9.7' RT TO RT EDGE PAVEMENT

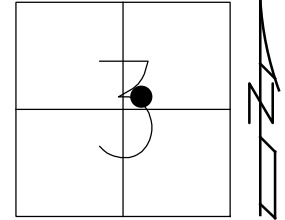
STATION: 9+52

HORZ.DATUM: \_\_\_\_\_

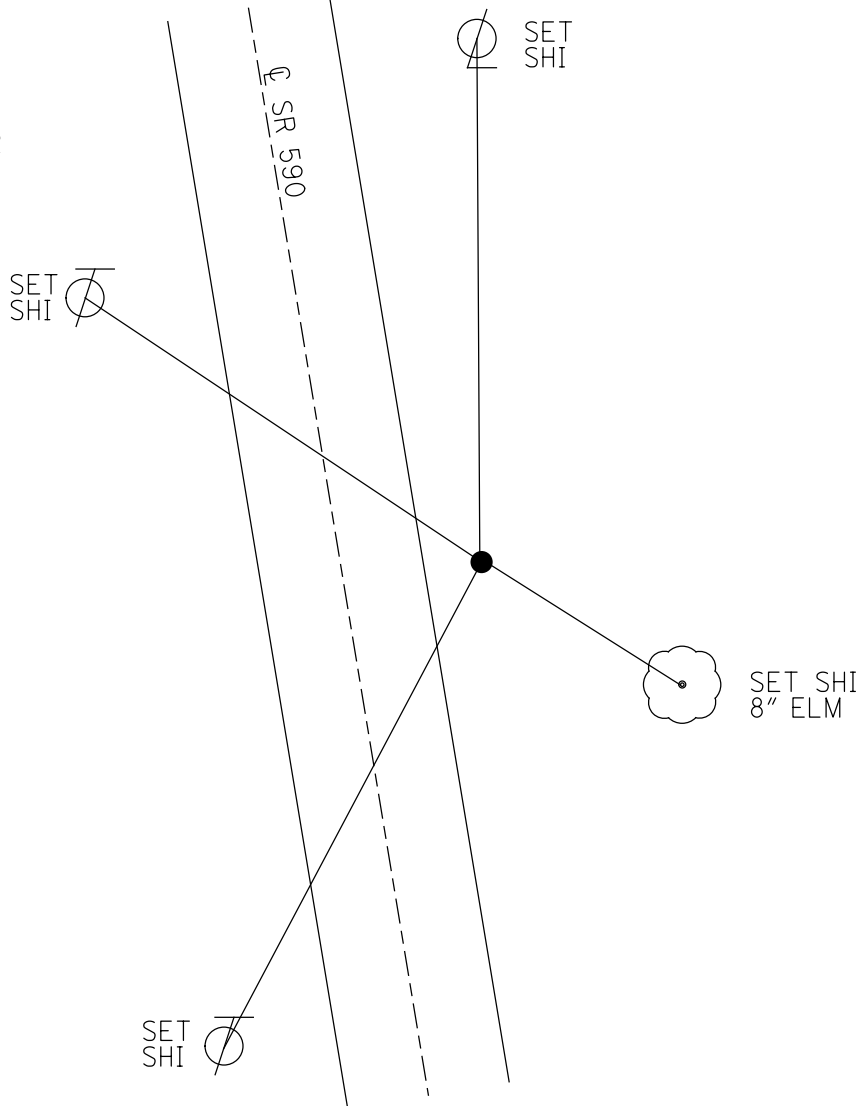
GEOID: \_\_\_\_\_

GRID: NORTHING: \_\_\_\_\_

EASTING: \_\_\_\_\_



RECORD: P.I.  
FD 1/2" ID IPIPE  
4/1/68  
7/28/71, BARBOUR  
10/15/99, MB



O.D.O.T. DISTRICT 2 SURVEY OFFICE (USE ONLY)

PERSONNEL

REFERENCE NO. 3

SHEET 3 OF 6

NOTES SCHNEIDER

DATE 7/27/71

ROUTE SR 590

H.C. MOSSER

WEATHER FAIR

COUNTY SENECA

R.C. BARBOUR

TEMP. 75°

TOWNSHIP LIBERTY

GEYMAN

SECTION 3

DWG BY RHOADES

PID \_\_\_\_\_

T 3 N R 14 E

TYPE MONUMENT " X " IN CONCRETE

ON SURFACE - ~~BELOW~~ ON \_\_\_\_\_

OFFSET Q PAVEMENT ON \_\_\_\_\_ LT : RT  
 - TO - EDGE PAVEMENT

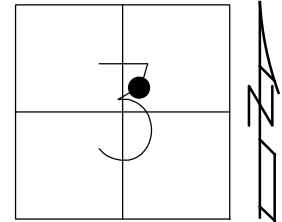
STATION: 11+83.53

HORZ.DATUM: \_\_\_\_\_

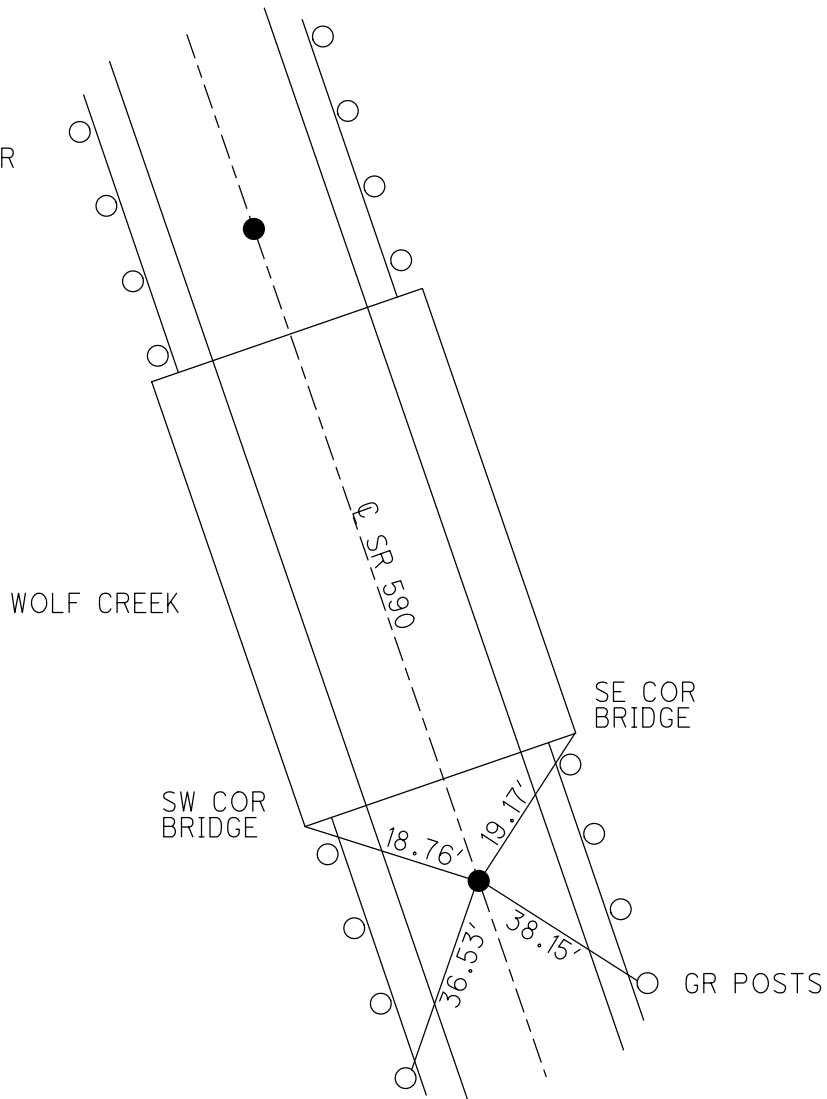
GEOID: \_\_\_\_\_

GRID: NORTHING: \_\_\_\_\_

EASTING: \_\_\_\_\_



RECORD: S.T.  
 FD "X" IN  
 CONCRETE  
 4/1/68  
 7/27/71, BARBOUR



O.D.O.T. DISTRICT 2 SURVEY OFFICE (USE ONLY)

PERSONNEL

REFERENCE NO. 4

SHEET 4 OF 6

NOTES SCHNEIDER

DATE 7/27/71

ROUTE SR 590

H.C. MOSSER

WEATHER FAIR

COUNTY SENECA

R.C. BARBOUR

TEMP. 75°

TOWNSHIP LIBERTY

GEYMAN

SECTION 3

DWG BY RHOADES

PID \_\_\_\_\_

T 3 N R 14 E

TYPE MONUMENT " X " IN CONCRETE

ON SURFACE - ~~BELOW~~ ON \_\_\_\_\_

OFFSET ☉ PAVEMENT ON \_\_\_\_\_ LT : RT

- TO - EDGE PAVEMENT

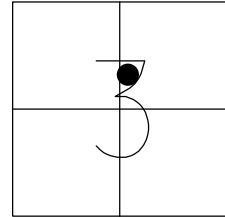
STATION: 13+06.63

HORZ.DATUM: \_\_\_\_\_

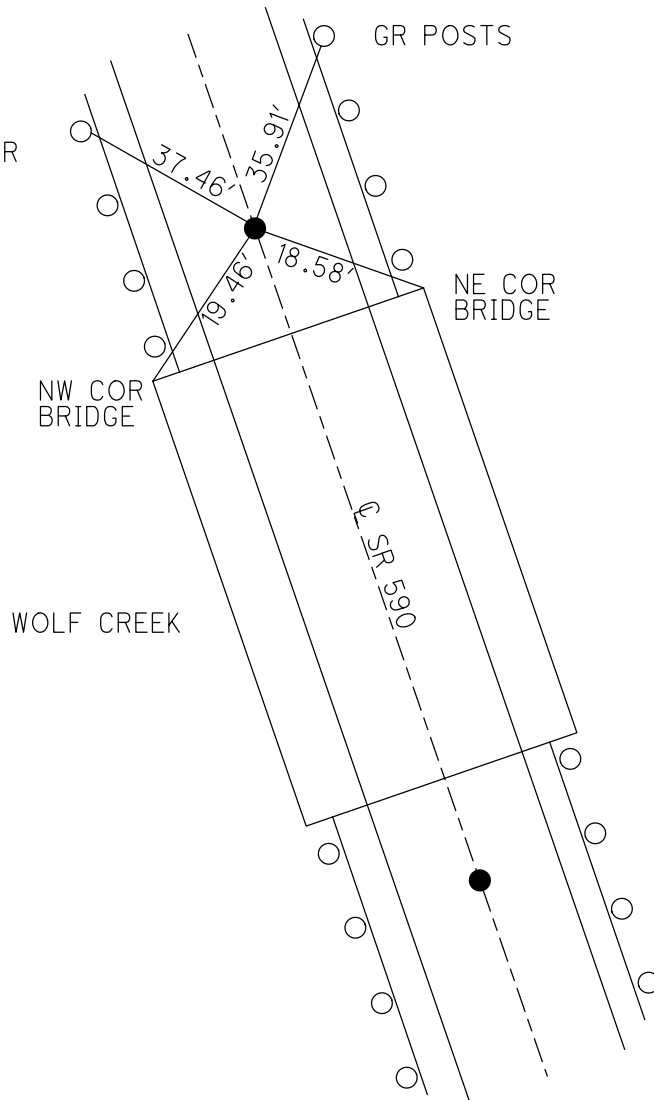
GEOID: \_\_\_\_\_

GRID: NORTHING: \_\_\_\_\_

EASTING: \_\_\_\_\_



RECORD: T.S.  
FD "X" IN  
CONCRETE  
4/1/68  
7/27/71, BARBOUR



O.D.O.T. DISTRICT 2 SURVEY OFFICE (USE ONLY)

PERSONNEL \_\_\_\_\_

REFERENCE NO. 5

SHEET 5 OF 6

NOTES BARNHISEL DATE 10/15/99

ROUTE SR 590

H.C. CANTERBURY WEATHER SUNNY

COUNTY SENECA

R.C. BARNHISEL TEMP. 60°

TOWNSHIP LIBERTY

DWG BY RHOADES PID \_\_\_\_\_

SECTION 3

T 3 N R 14 E

TYPE MONUMENT 5/8" IPIN

ON SURFACE - ~~BELOW~~ ON \_\_\_\_\_

OFFSET CL PAVEMENT 24.0' LT : ~~RT~~

10.1 LT TO LT EDGE PAVEMENT

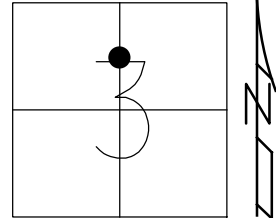
STATION: 15+56.39

HORZ.DATUM: \_\_\_\_\_

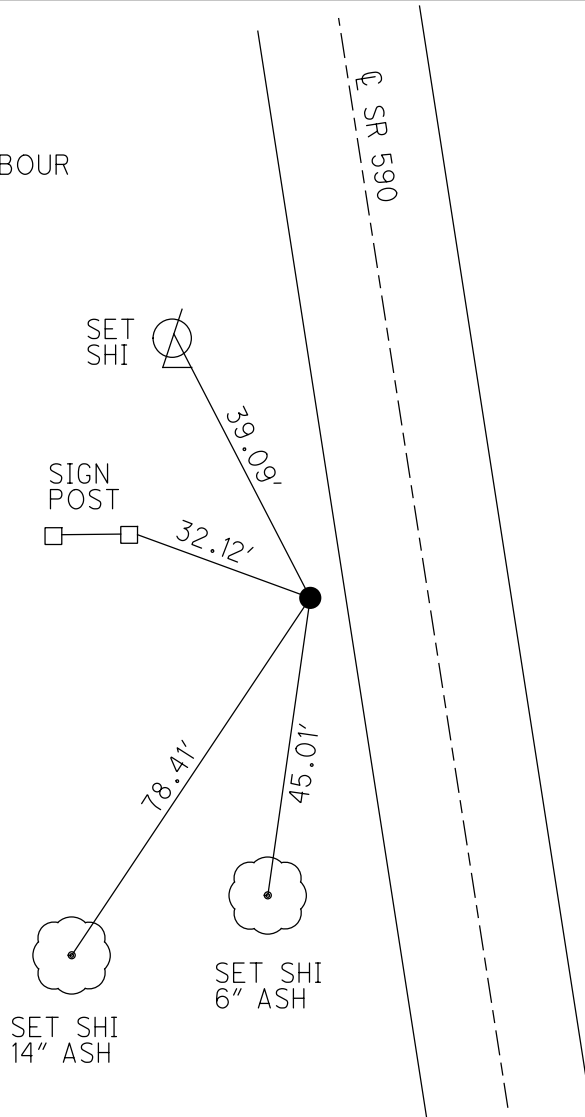
GEOID: \_\_\_\_\_

GRID: NORTHING: \_\_\_\_\_

EASTING: \_\_\_\_\_



RECORD: P.I.  
STA. 15+56.8  
DNF  
4/1/68  
7/27/71, BARBOUR  
FD 5/8" IPIN  
10/15/99, MB



O.D.O.T. DISTRICT 2 SURVEY OFFICE (USE ONLY)

PERSONNEL

REFERENCE NO. 7

SHEET 6 OF 6

NOTES BARNHESEL

DATE 10/15/99

ROUTE SR 590

H.C. CANTERBURY

WEATHER SUNNY

COUNTY SENECA

R.C. BARNHESEL

TEMP. 60°

TOWNSHIP LIBERTY

SECTION 3

DWG BY RHOADES PID \_\_\_\_\_

T 3 N R 14 E

TYPE MONUMENT P.K.NAIL

ON SURFACE - ~~BELOW~~ ON \_\_\_\_\_

OFFSET  $\odot$  PAVEMENT 2.6', ON  $\odot$  W LT : ~~RT~~

10.1' TO LT EDGE PAVEMENT

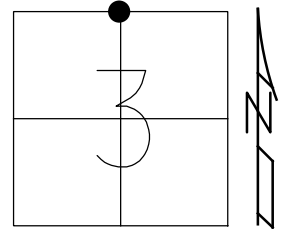
STATION: 25+33.97

HORZ.DATUM: \_\_\_\_\_

GEOID: \_\_\_\_\_

GRID: NORTHING: \_\_\_\_\_

EASTING: \_\_\_\_\_



RECORD:  
 FD P.K.NAIL  
 4/1/68  
 7/28/71, BARBOUR  
 FD P.K.SHANK  
 0.34' DOWN  
 5/5/82, CL  
 FD P.K.NAIL  
 10/15/99, MB

