

O.D.O.T. DISTRICT 2 SURVEY OFFICE (USE ONLY)

PERSONNEL

REFERENCE NO. 1

SHEET 1 OF 6

NOTES BARNHEISEL DATE 10/15/99

H.C. CANTERBURY WEATHER SUNNY

R.C. BARNHEISEL TEMP. 60°

ROUTE SR 590

COUNTY SENECA

TOWNSHIP LIBERTY

SECTION 3

T 3 N R 14 E

DWG BY RHOADES PID _____

TYPE MONUMENT MAG NAIL

ON SURFACE - ~~BELOW~~ ON _____

OFFSET ☉ PAVEMENT 2.4', 2' LT ☉ N LT : ~~RT~~

- TO - EDGE PAVEMENT

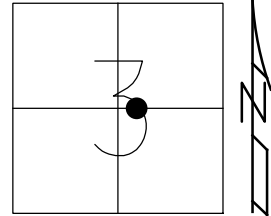
STATION: 2+13.19

HORZ.DATUM: NAD83 2011

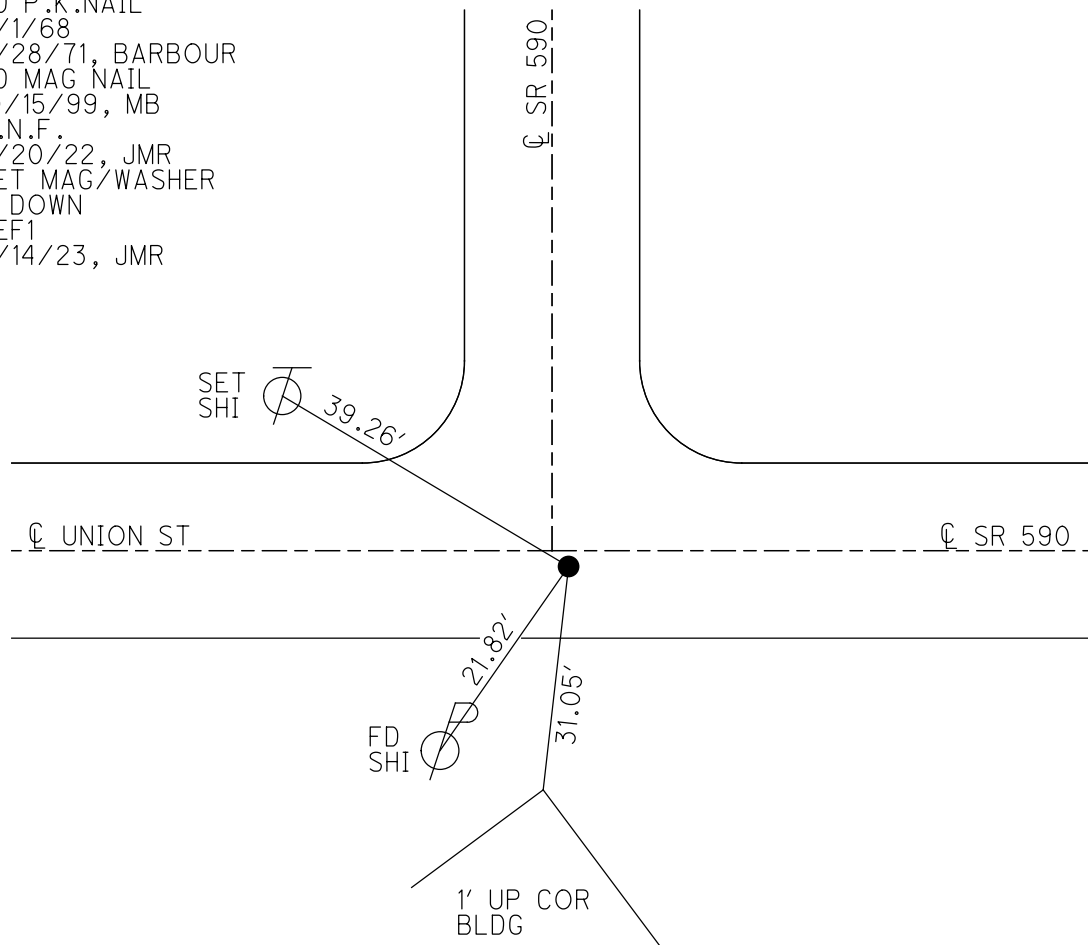
GEOID: NAVD88 2018

GRID: NORTHING: 576520.466

EASTING: 1766461.258



RECORD: P.I.
 STA. 2+26.7
 FD P.K.NAIL
 4/1/68
 7/28/71, BARBOUR
 FD MAG NAIL
 10/15/99, MB
 D.N.F.
 7/20/22, JMR
 SET MAG/WASHER
 1" DOWN
 REF1
 4/14/23, JMR



O.D.O.T. DISTRICT 2 SURVEY OFFICE (USE ONLY)

PERSONNEL

REFERENCE NO. 1

SHEET 1 OF 6

NOTES BARNHEISEL

DATE 10/15/99

ROUTE SR 590

H.C. CANTERBURY

WEATHER SUNNY

COUNTY SENECA

R.C. BARNHEISEL

TEMP. 60°

TOWNSHIP LIBERTY

DWG BY RHOADES PID _____

SECTION 3

T 3 N R 14 E

TYPE MONUMENT MAG NAIL

ON SURFACE - ~~BELOW~~ ON _____

OFFSET Q PAVEMENT 2.4', 2' LT Q N LT : ~~RT~~

- TO - EDGE PAVEMENT

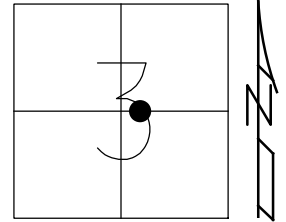
STATION: 2+13.19

HORIZ.DATUM: _____

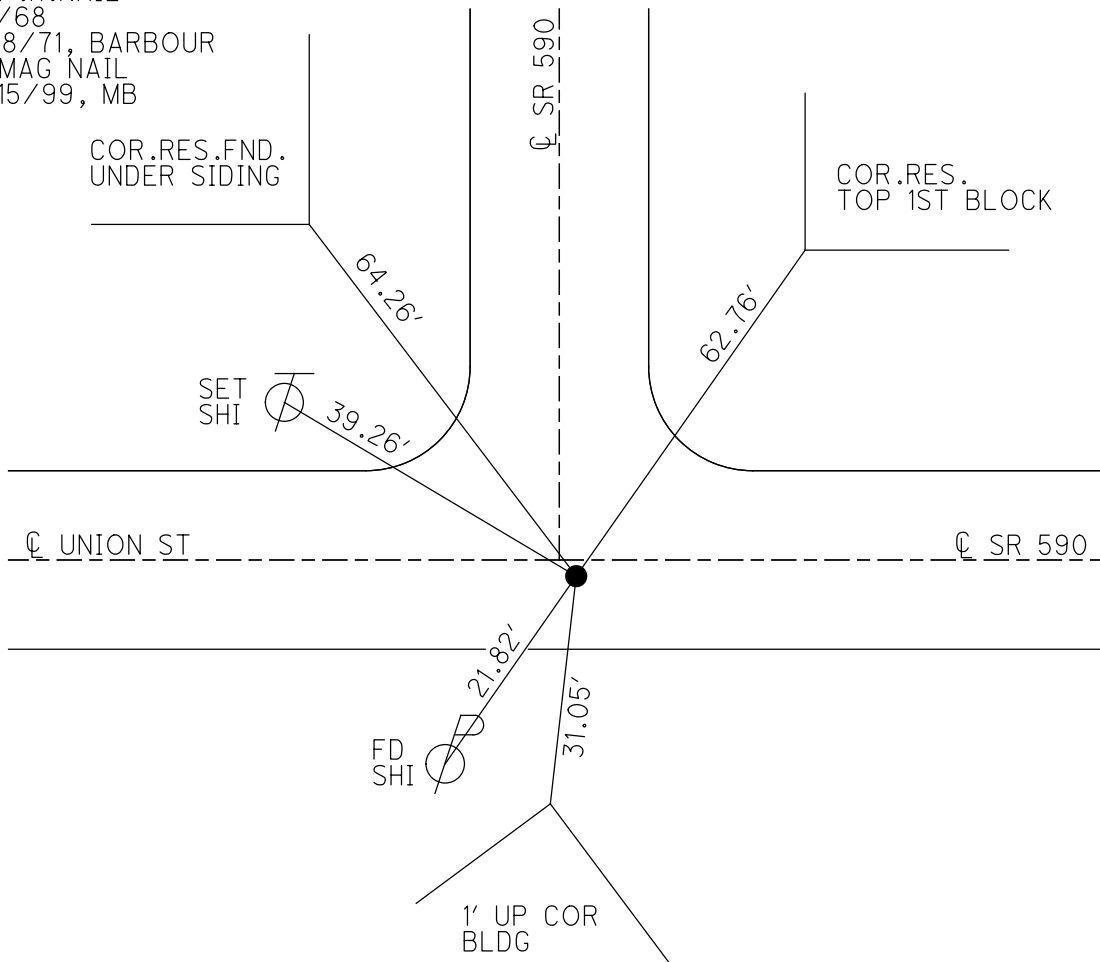
GEOID: _____

GRID: NORTHING: _____

EASTING: _____



RECORD: P.I.
 STA. 2+26.7
 FD P.K.NAIL
 4/1/68
 7/28/71, BARBOUR
 FD MAG NAIL
 10/15/99, MB



O.D.O.T. DISTRICT 2 SURVEY OFFICE

PERSONNEL _____

REFERENCE NO. 1

SHEET 1 OF 4

NOTES BARNHISEL RC

H.C. CANTERBURY

R.C. _____

DATE 10-15-99

WEATHER SUNNY

TEMP. +60°

ROUTE 590

COUNTY SENECA

TOWNSHIP LIBERTY

SECTION 3

T 3 N R 14 E

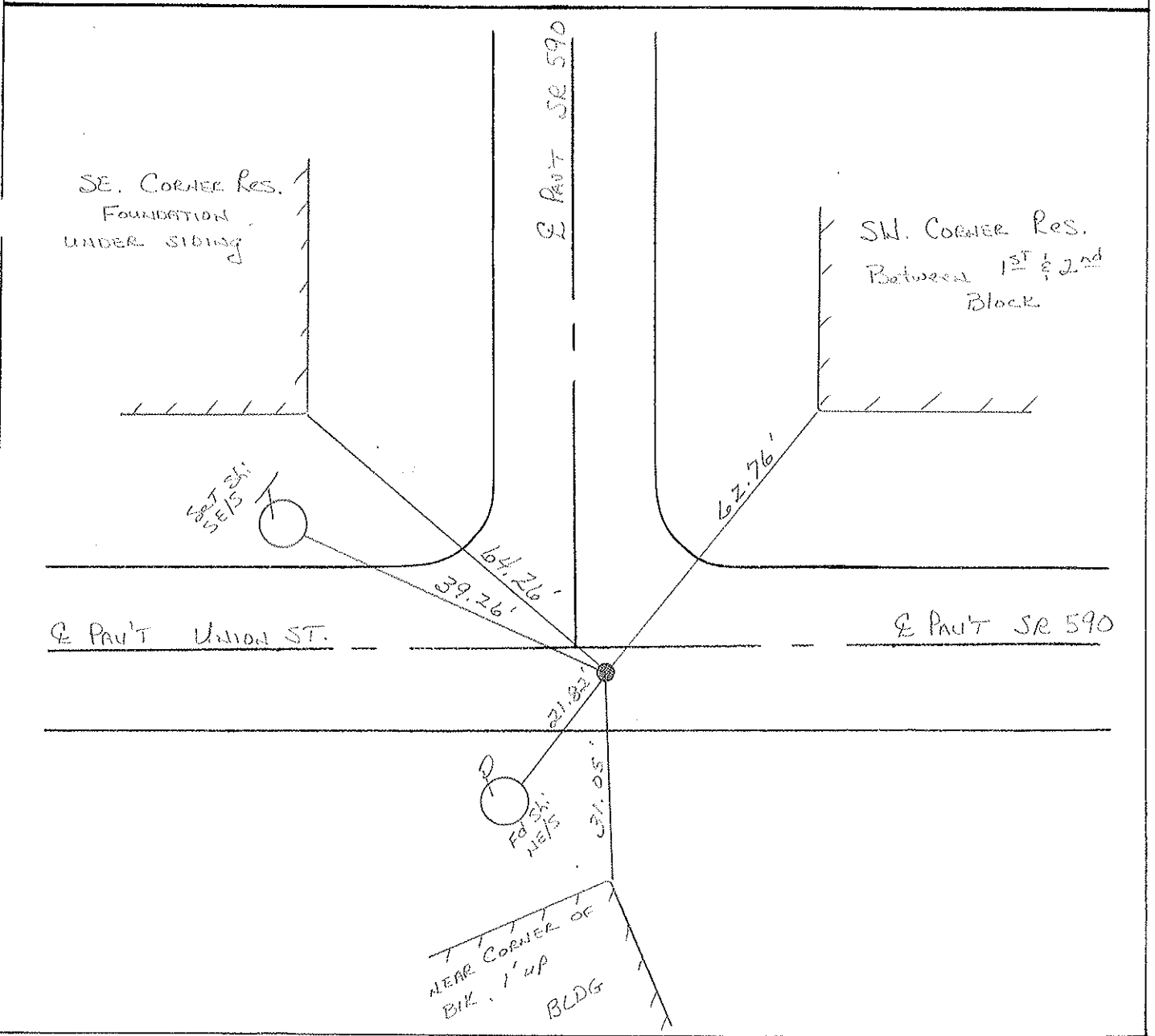
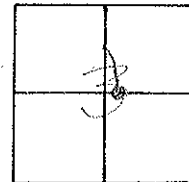
TYPE MONUMENT Mag Nail

ON SURFACE - BELOW YES

LEFT - & PAV'T. - RIGHT 2' LT OF & N. / 2.4' RT OF & EAST

TO EDGE PAVEMENT

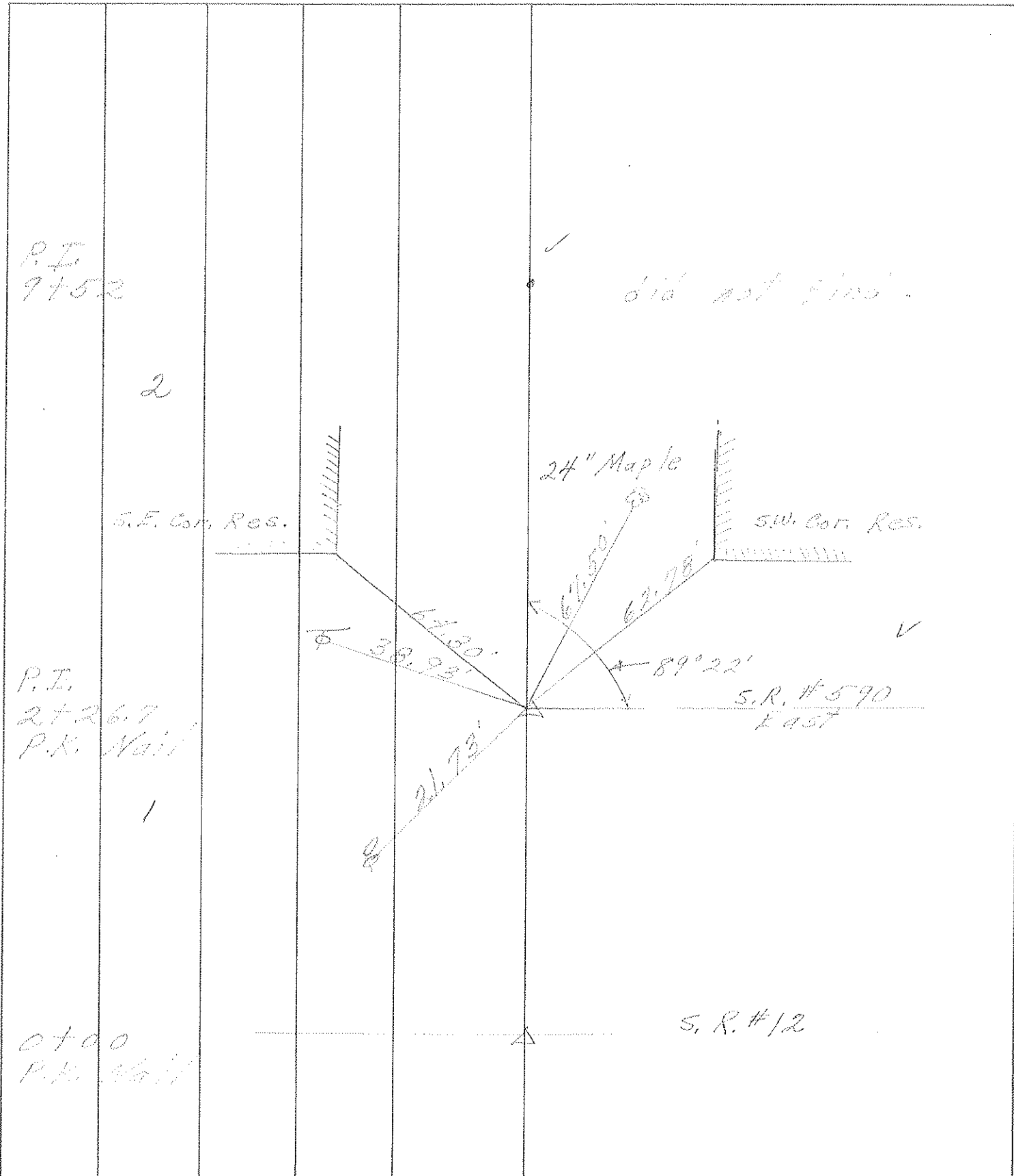
S.L.M. 2+13.19



PERSONNEL	TITLE	PERSONNEL	TITLE
<u>Schneider</u>		<u>Vinson</u>	
<u>Masser</u>			
<u>Barbour</u>			
<u>Gayman</u>			

COUNTY Seneca DATE 7-28-71
 S. R. 590 WEATHER Fair
 SEC. 3 TEMP. 75°

DESCRIPTION Bethsville to Sandusky G. line JOB NO. _____



PERSONNEL TITLE PERSONNEL TITLE
 Schneider _____
 Mosser _____
 Barbour _____

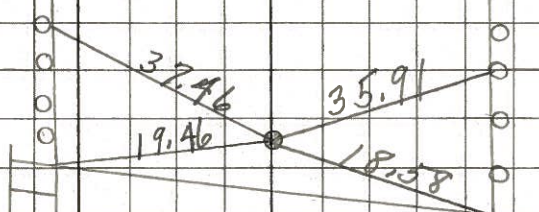
COUNTY Seneca DATE 4-1-68
 S. R. # 590 WEATHER Cold
 SEC. Bettsville to Co. Line TEMP. 32°

DESCRIPTION Ties for Control Points JOB NO. _____

④

T.S.
 13+06.63
 Wolf Creek Br.

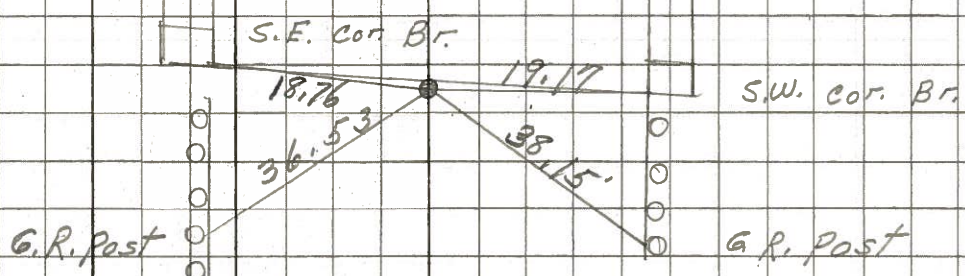
8704



③

S.T.
 "x" in conc.
 11+83.53

8703



②

P.I.
 9+52

8702

did not find

①

P.I.
 2+26.7
 R.R. Spk.
 3" down

8700

