

O.D.O.T. DISTRICT 2 SURVEY OFFICE (USE ONLY)

PERSONNEL _____

REFERENCE NO. 3

SHEET 3 OF 6

NOTES SCHNEIDER

DATE 7/27/71

ROUTE SR 590

H.C. MOSSER

WEATHER FAIR

COUNTY SENECA

R.C. BARBOUR

TEMP. 75°

TOWNSHIP LIBERTY

GEYMAN

SECTION 3

DWG BY RHOADES

PID _____

T 3 N R 14 E

TYPE MONUMENT " X " IN CONCRETE

ON SURFACE - ~~BELOW~~ ON _____

OFFSET Q PAVEMENT ON _____ LT : RT
 - TO - EDGE PAVEMENT

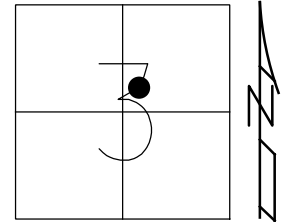
STATION: 11+83.53

HORZ.DATUM: _____

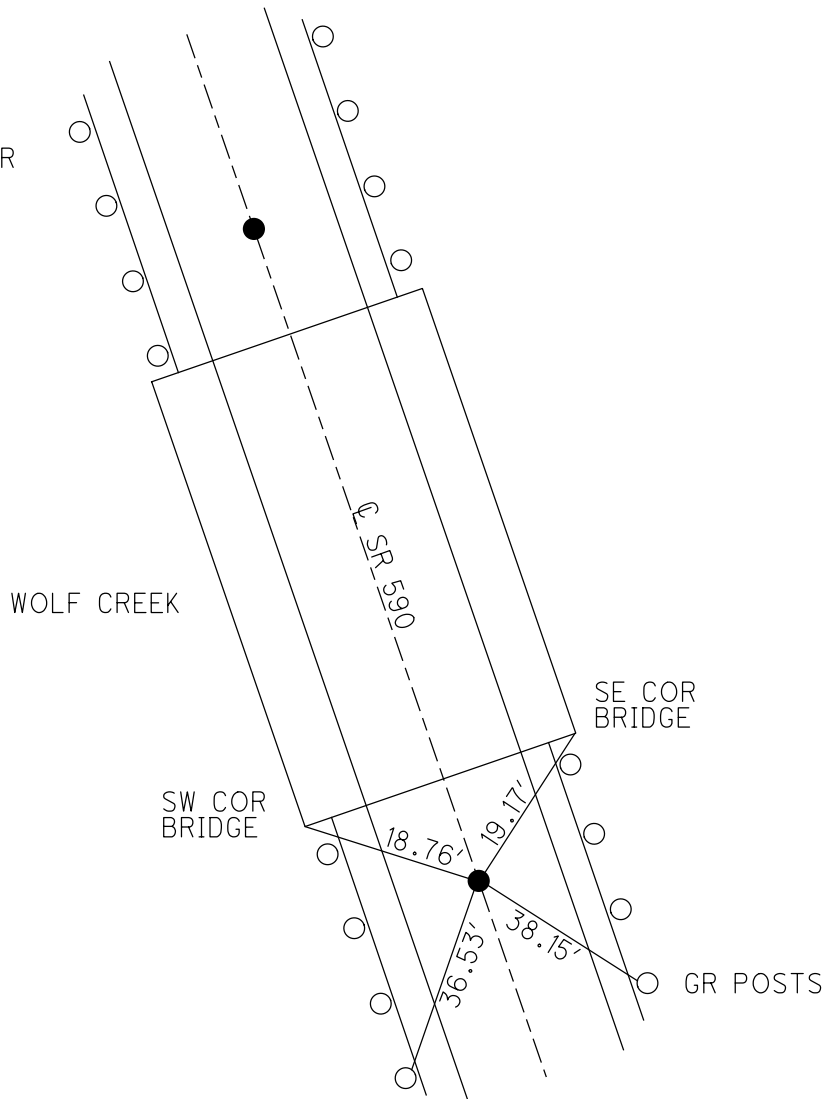
GEOID: _____

GRID: NORTHING: _____

EASTING: _____



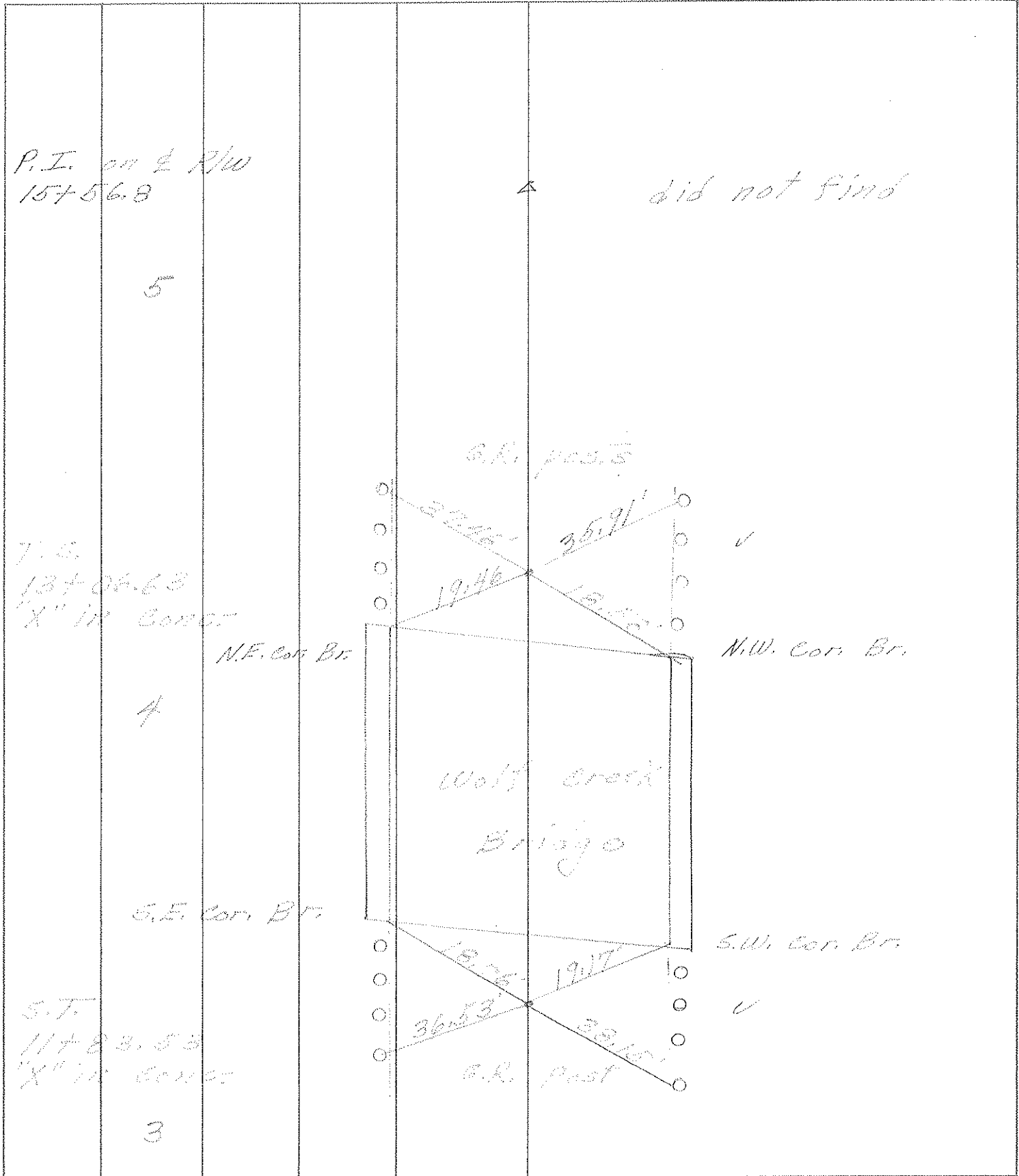
RECORD: S.T.
 FD "X" IN
 CONCRETE
 4/1/68
 7/27/71, BARBOUR



PERSONNEL	TITLE	PERSONNEL	TITLE

COUNTY Seneca DATE 7-27-71
 S. R. 590 WEATHER Fair
 SEC. 3 TEMP. 75°

DESCRIPTION Pottsville to Fairmount, Pa. Line JOB NO. _____
 LEFT CENTER LINE RIGHT



PERSONNEL TITLE PERSONNEL TITLE
 Schneider _____
 Mosser _____
 Barbour _____

COUNTY Seneca DATE 4-1-68
 S. R. # 590 WEATHER Co. 1d
 SEC. Bettsville to Co. Line TEMP. 32°

DESCRIPTION Ties for Control Points JOB NO. _____

④

T.S.
 13+06.63
 Wolf Creek Br.

8704

③

S.T.
 "X" in conc.
 11+83.53

8703

②

P.T.
 9+52

8702

①

P.T.
 2+26.7
 R.R. Spk.
 3" down

8700

