

O.D.O.T. DISTRICT 2 SURVEY OFFICE (USE ONLY)

PERSONNEL

REFERENCE NO. 4

SHEET 4 OF 6

NOTES SCHNEIDER

DATE 7/27/71

ROUTE SR 590

H.C. MOSSER

WEATHER FAIR

COUNTY SENECA

R.C. BARBOUR

TEMP. 75°

TOWNSHIP LIBERTY

GEYMAN

SECTION 3

DWG BY RHOADES

PID _____

T 3 N R 14 E

TYPE MONUMENT " X " IN CONCRETE

ON SURFACE - ~~BELOW~~ ON _____

OFFSET ☉ PAVEMENT ON _____ LT : RT

- TO - EDGE PAVEMENT

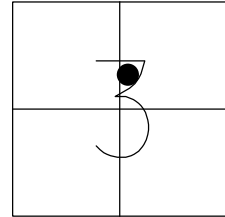
STATION: 13+06.63

HORIZ.DATUM: _____

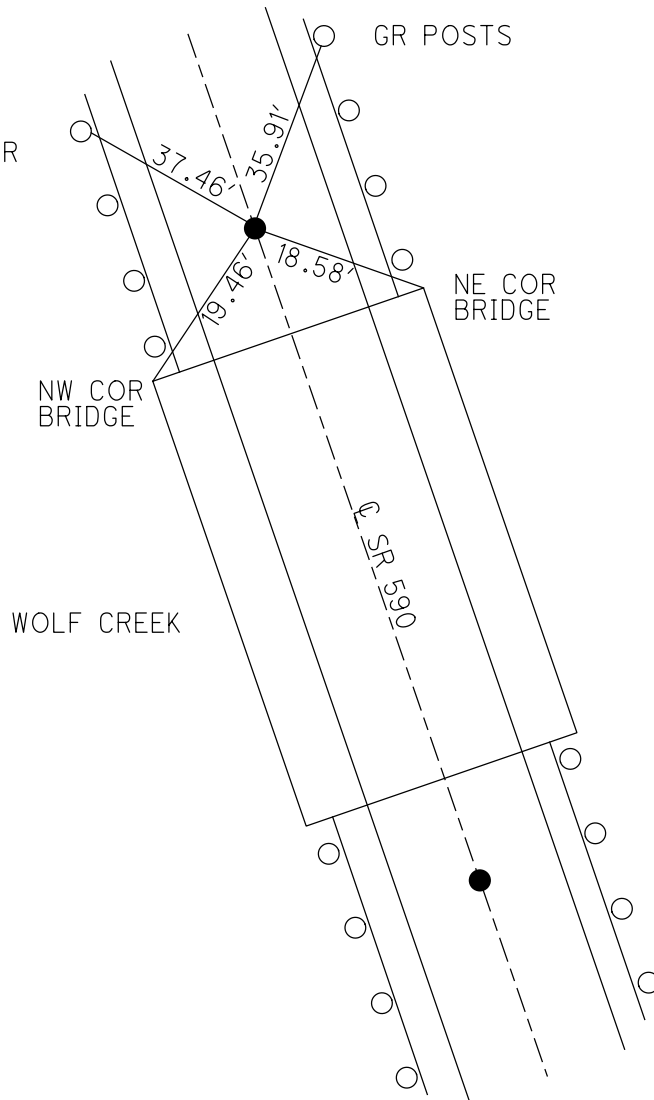
GEOID: _____

GRID: NORTHING: _____

EASTING: _____



RECORD: T.S.
FD "X" IN
CONCRETE
4/1/68
7/27/71, BARBOUR



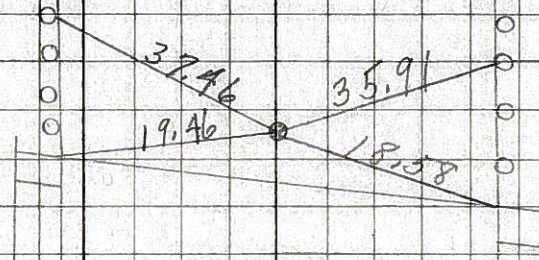
PERSONNEL TITLE PERSONNEL TITLE
 Schneider _____
 Mosser _____
 Barbour _____

COUNTY Seneca DATE 4-1-68
 S. R. # 590 WEATHER Co. 1d
 SEC. Bettsville to Co. Line TEMP. 32°

DESCRIPTION Ties for Control Points JOB NO. _____

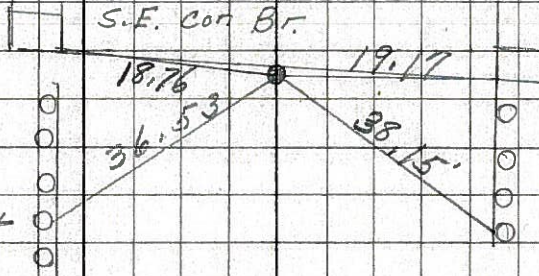
④

T.S.
 13+06.63
 Wolf Creek Br.
 8704



③

S.T.
 "X" in conc.
 11+83.53
 8703
 S.E. Cor. Br. SW. Cor. Br.
 G.R. Post G.R. Post

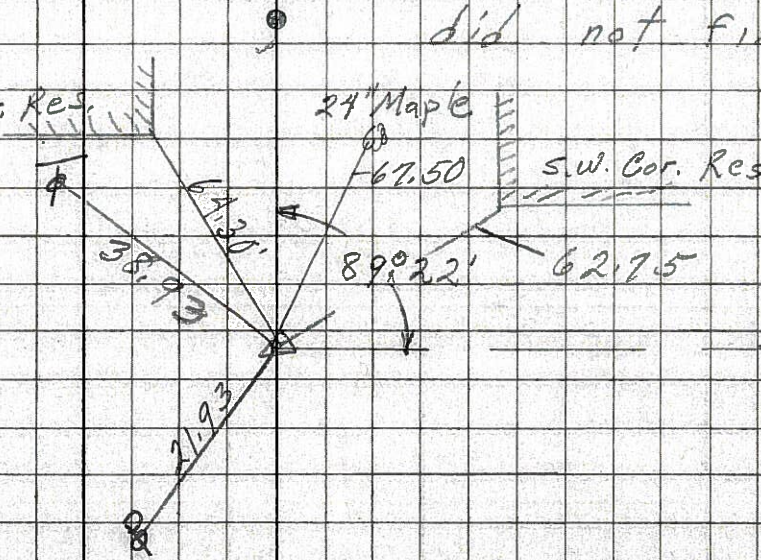


②

P.T.
 9+52
 8702
 did not find

①

S.T.
 7+14.20
 8701
 did not find
 S.E. Cor. Res. 24" Maple S.W. Cor. Res.
 67.50
 62.75
 67.30
 38.93
 89°22'
 21.93



P.T.
 2+26.7
 R.R. Spk.
 3" down
 8700