

O.D.O.T. DISTRICT 2 SURVEY OFFICE (USE ONLY)

PERSONNEL

REFERENCE NO. 5

SHEET 5 OF 6

NOTES BARNHISEL DATE 10/15/99

H.C. CANTERBURY WEATHER SUNNY

R.C. BARNHISEL TEMP. 60°

ROUTE SR 590

COUNTY SENECA

TOWNSHIP LIBERTY

SECTION 3

DWG BY RHOADES PID \_\_\_\_\_

T 3 N R 14 E

TYPE MONUMENT 5/8" IPIN

ON SURFACE - ~~BELOW~~ ON \_\_\_\_\_

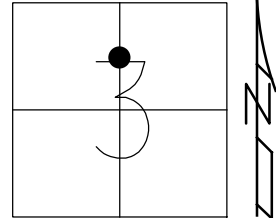
OFFSET CL PAVEMENT 24.0' LT : ~~RT~~

10.1 LT TO LT EDGE PAVEMENT

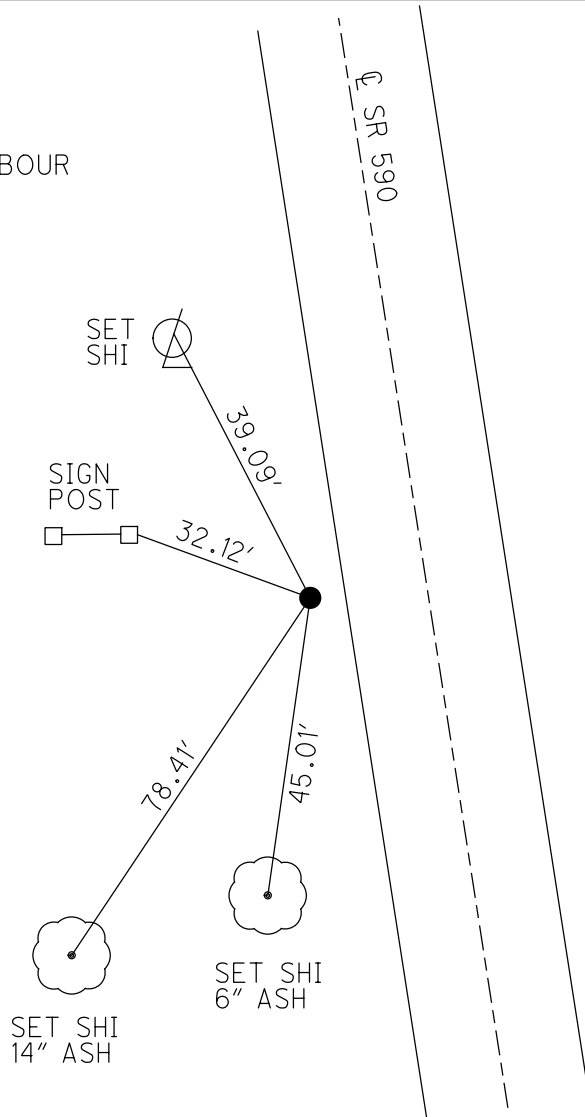
STATION: 15+56.39

HORZ.DATUM: \_\_\_\_\_ GEOID: \_\_\_\_\_

GRID: NORTHING: \_\_\_\_\_ EASTING: \_\_\_\_\_



RECORD: P.I.  
STA. 15+56.8  
DNF  
4/1/68  
7/27/71, BARBOUR  
FD 5/8" IPIN  
10/15/99, MB



# O.D.O.T. DISTRICT 2 SURVEY OFFICE

PERSONNEL \_\_\_\_\_

REFERENCE NO. 5

SHEET 3 OF 4

NOTES BARNHISEL RC

H.C. CANTONBURG

DATE 10-15-99

ROUTE 590

R.C. \_\_\_\_\_

WEATHER SUNNY

COUNTY SENECA

TEMP. +60°

TOWNSHIP LIBERTY

SECTION 3

T 3 N 14 E

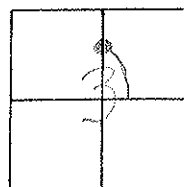
TYPE MONUMENT 5/8 inch IRON ROD

ON SURFACE - BELOW YES

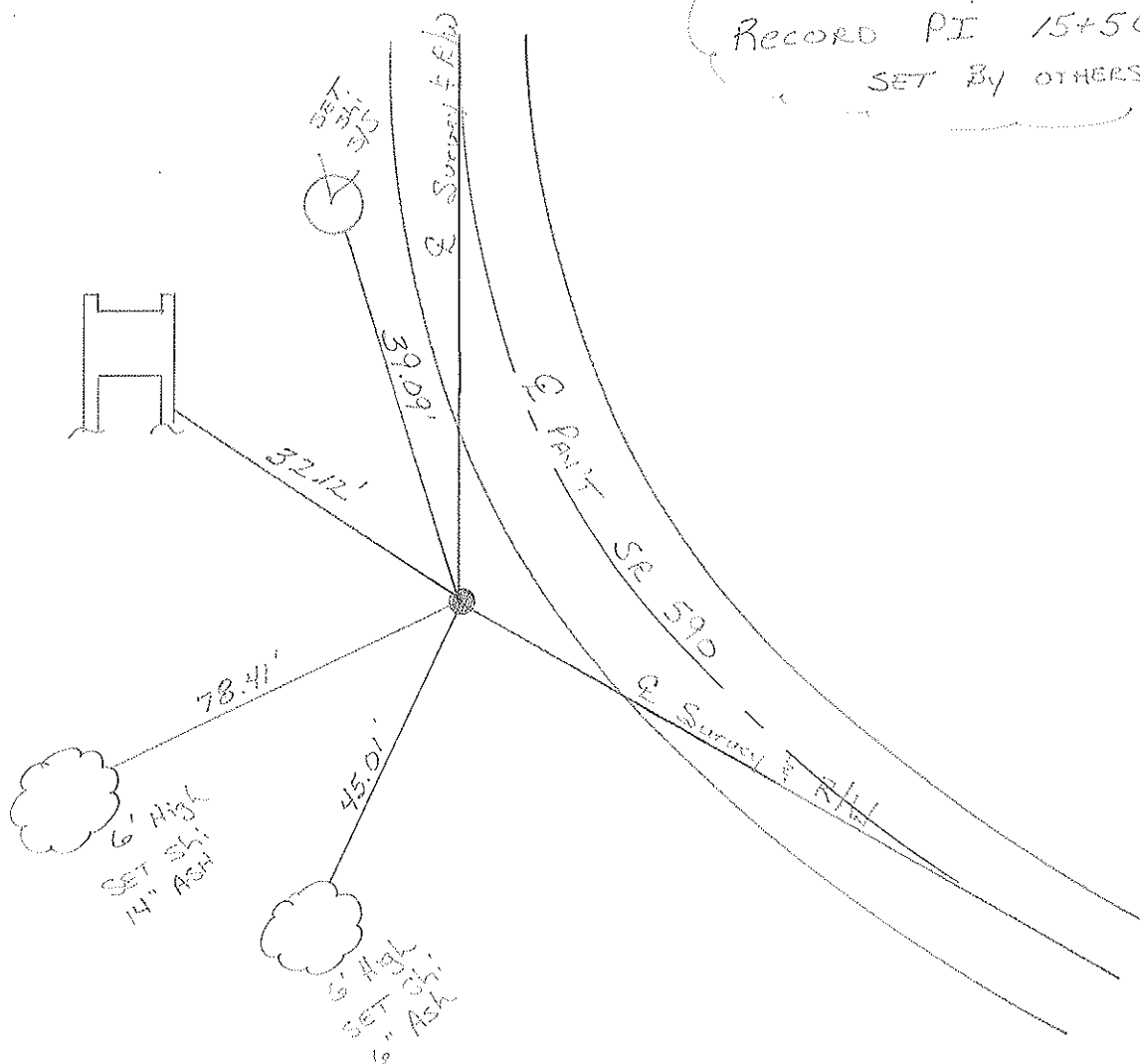
LEFT - ℄ PAV'T. - RIGHT 24.0

10.1 FT OF LT EDGE PAVEMENT

S.L.M. 15+56.39



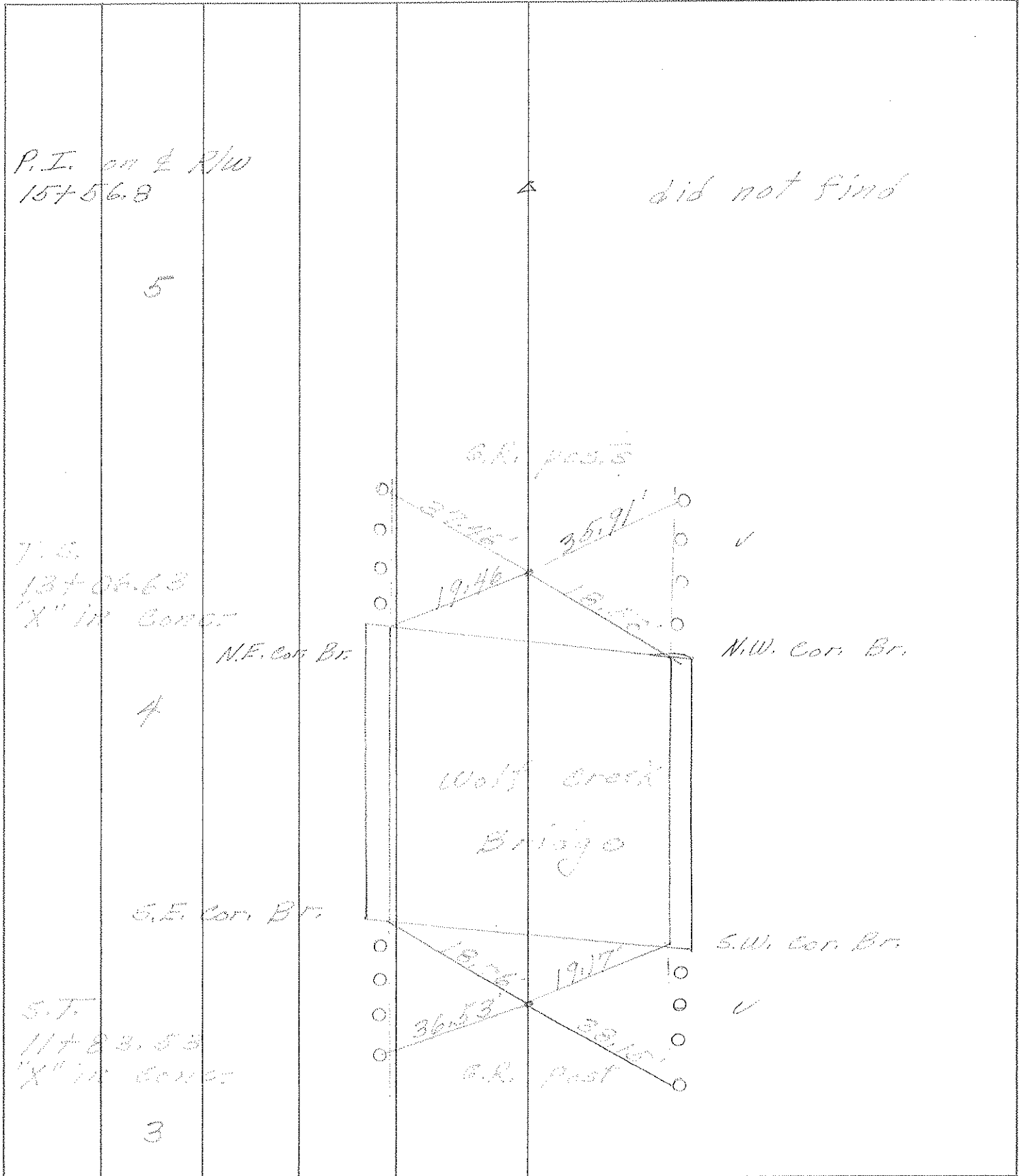
RECORD PI 15+56.8  
SET BY OTHERS



PERSONNEL	TITLE	PERSONNEL	TITLE

COUNTY Seneca DATE 7-27-71  
 S. R. 590 WEATHER Fair  
 SEC. 3 TEMP. 75°

DESCRIPTION Pottsville to Sardinia, Pa. Line JOB NO. \_\_\_\_\_



PERSONNEL TITLE PERSONNEL TITLE

Schneider  
Mosser  
Barbour

COUNTY Seneca

DATE 4-1-68

S. R. # 590

WEATHER Cold

SEC. Bettsville to Co. Line

TEMP. 35°

DESCRIPTION Ties for Control Points

JOB NO.

LEFT

CENTER LINE

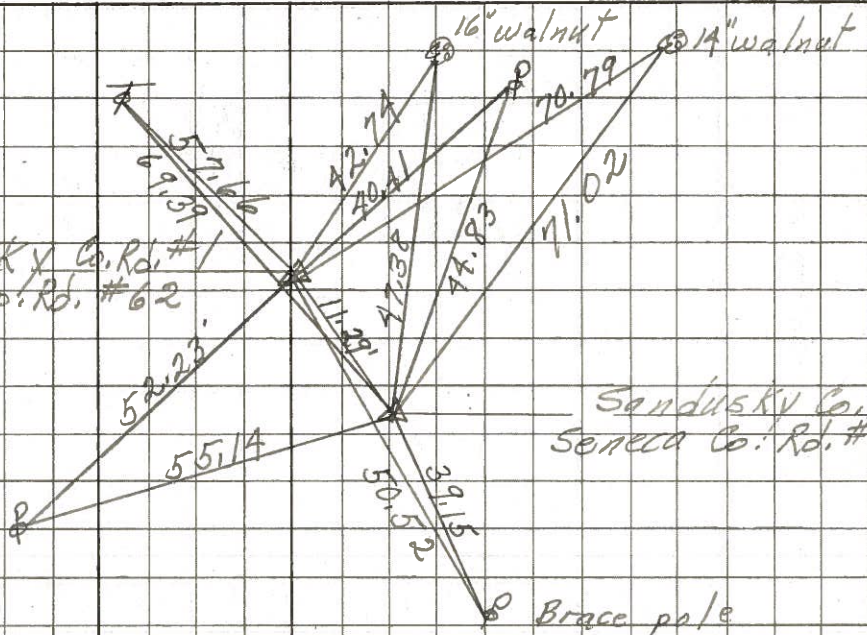
RIGHT

7

P.I.  
25+38.47

Sandusky Co. Rd. #1  
Seneca Co. Rd. #62

8707



Sandusky Co. Rd. #1  
Seneca Co. Rd. #62

Brace pole

S.T.  
17+99.13 BK. =  
18+04.24 Hd.

8706

did not find

5

P.I.  
15+56.8

8705

did not find