

O.D.O.T. DISTRICT 2 SURVEY OFFICE (USE ONLY)

PERSONNEL

REFERENCE NO. 1 A

SHEET 1 OF 10

NOTES RHOADES

DATE 12/19/18

ROUTE SR 635

H.C. O'DONNELL

WEATHER FAIR

COUNTY SENECA

R.C. RHOADES

TEMP. 35°

TOWNSHIP HOPEWELL

SECTION 18

DWG BY RHOADES PID 92128

T 2 N R 14 E

TYPE MONUMENT MONBOX W/1" IPIN

ON SURFACE - ~~BELOW~~ ON

OFFSET  $\bar{C}$  PAVEMENT - \_\_\_\_\_ LT : RT

- \_\_\_\_\_ TO - \_\_\_\_\_ EDGE PAVEMENT

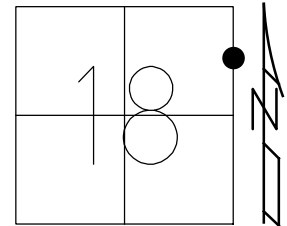
STATION: 0+00

HORZ.DATUM: NAD83 2011

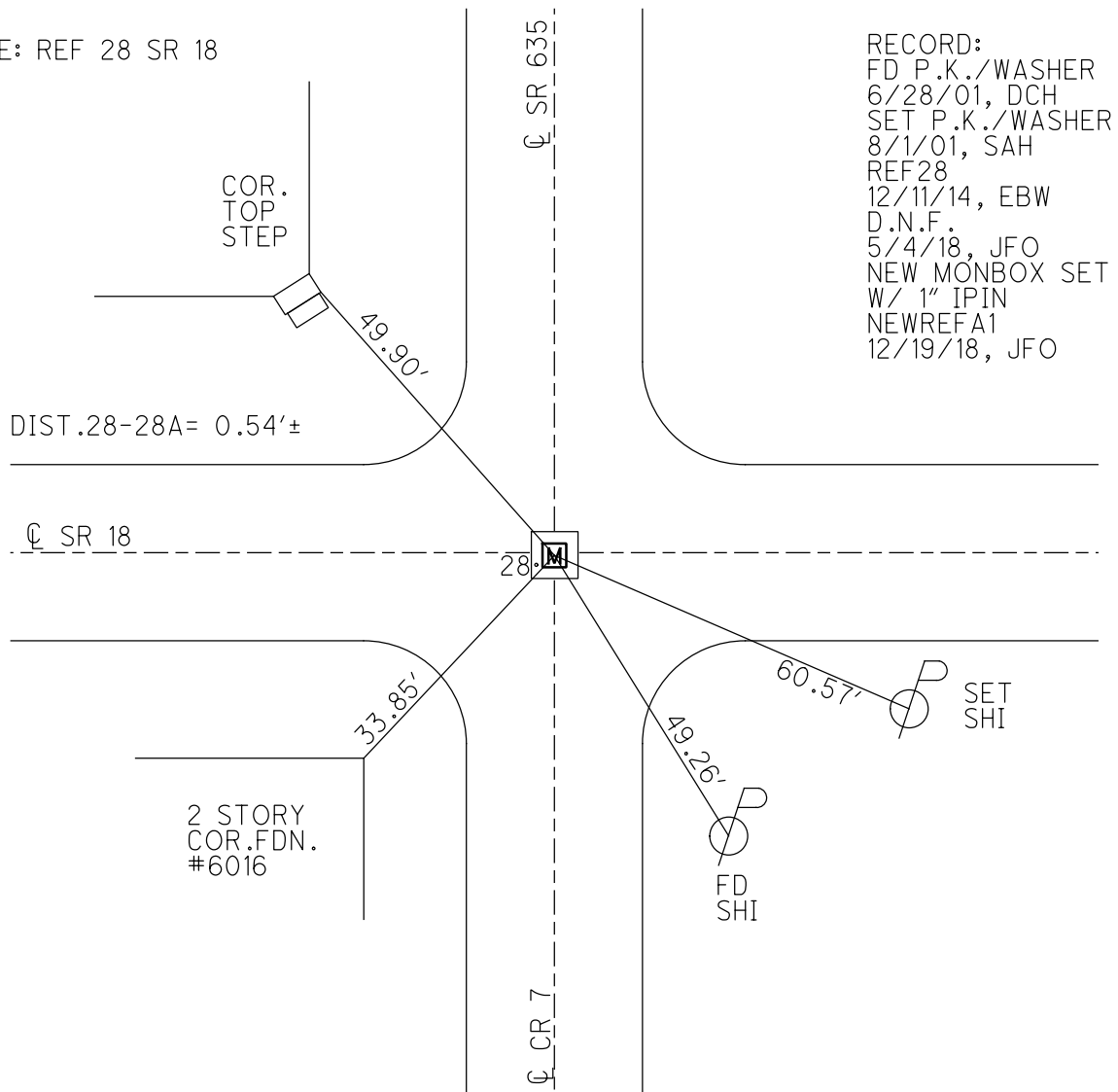
GEOID: 2012A

GRID: NORTHING: 535118.908

EASTING: 1752183.195



NOTE: REF 28 SR 18

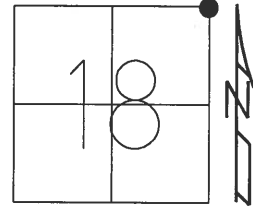


RECORD:  
 FD P.K./WASHER  
 6/28/01, DCH  
 SET P.K./WASHER  
 8/1/01, SAH  
 REF28  
 12/11/14, EBW  
 D.N.F.  
 5/4/18, JFO  
 NEW MONBOX SET  
 W/ 1" IPIN  
 NEWREFA1  
 12/19/18, JFO

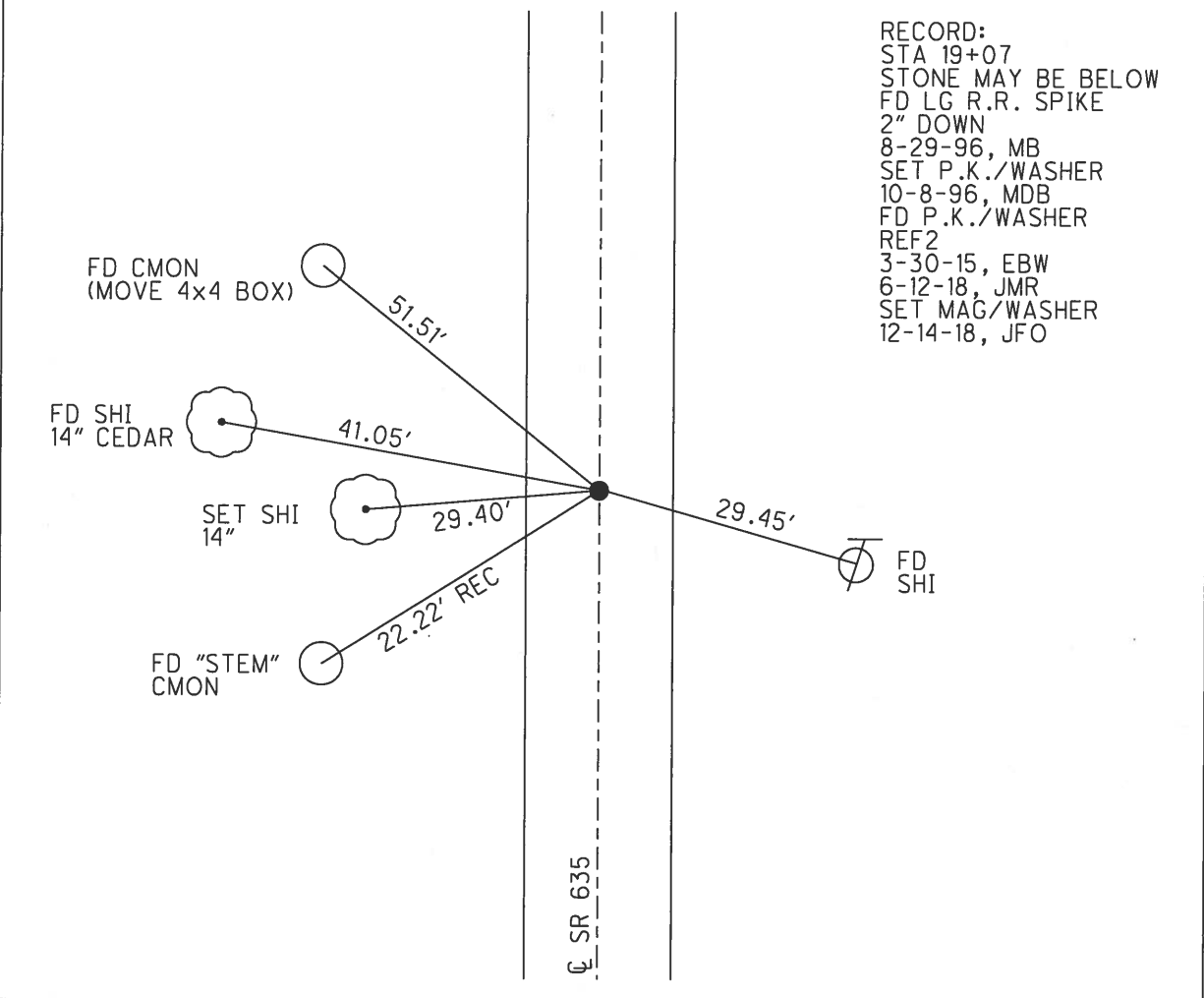
O.D.O.T. DISTRICT 2 SURVEY OFFICE (USE ONLY)

PERSONNEL \_\_\_\_\_ REFERENCE NO. 2 SHEET 1 OF 9  
 NOTES TRENKA DATE 6-12-18 ROUTE SR 635  
 H.C. RHOADES WEATHER CLOUDY COUNTY SENECA  
 R.C. TRENKA TEMP. 70°F TOWNSHIP HOPEWELL  
 DWG BY JAMES PID 92128 SECTION 18  
 T 2 N R 14 E

TYPE MONUMENT P.K./WASHER  
~~ON SURFACE~~ - BELOW 2"  
 OFFSET 4.3' LT : ~~RT~~  
5.7' TO LT EDGE PAVEMENT  
 STATION: 19+23.06



HORZ. DATUM: NAD83 2011 GEOID: NAVD88 2012A  
 GRID: NORTHING: 537041.627 EASTING: 1752218.475



O.D.O.T. DISTRICT 2 SURVEY OFFICE (USE ONLY)

PERSONNEL \_\_\_\_\_ REFERENCE NO. 3 SHEET 2 OF 9

NOTES TRENKA DATE 6-12-18 ROUTE SR 635  
 H.C. RHOADES WEATHER CLOUDY COUNTY SENECA  
 R.C. TRENKA TEMP. 70°F TOWNSHIP HOPEWELL

SECTION 7  
T 2 N R 14 E

DWG BY JAMES PID 92128

TYPE MONUMENT SM R.R. SPIKE

~~ON SURFACE~~ - BELOW 2"

OFFSET CL PAVEMENT 5.3' LT : ~~RT~~

4.9' TO LT EDGE PAVEMENT

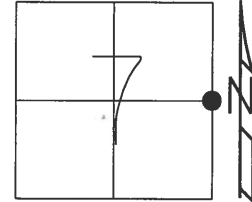
STATION: 45+75.88

HORZ. DATUM: NAD83 2011

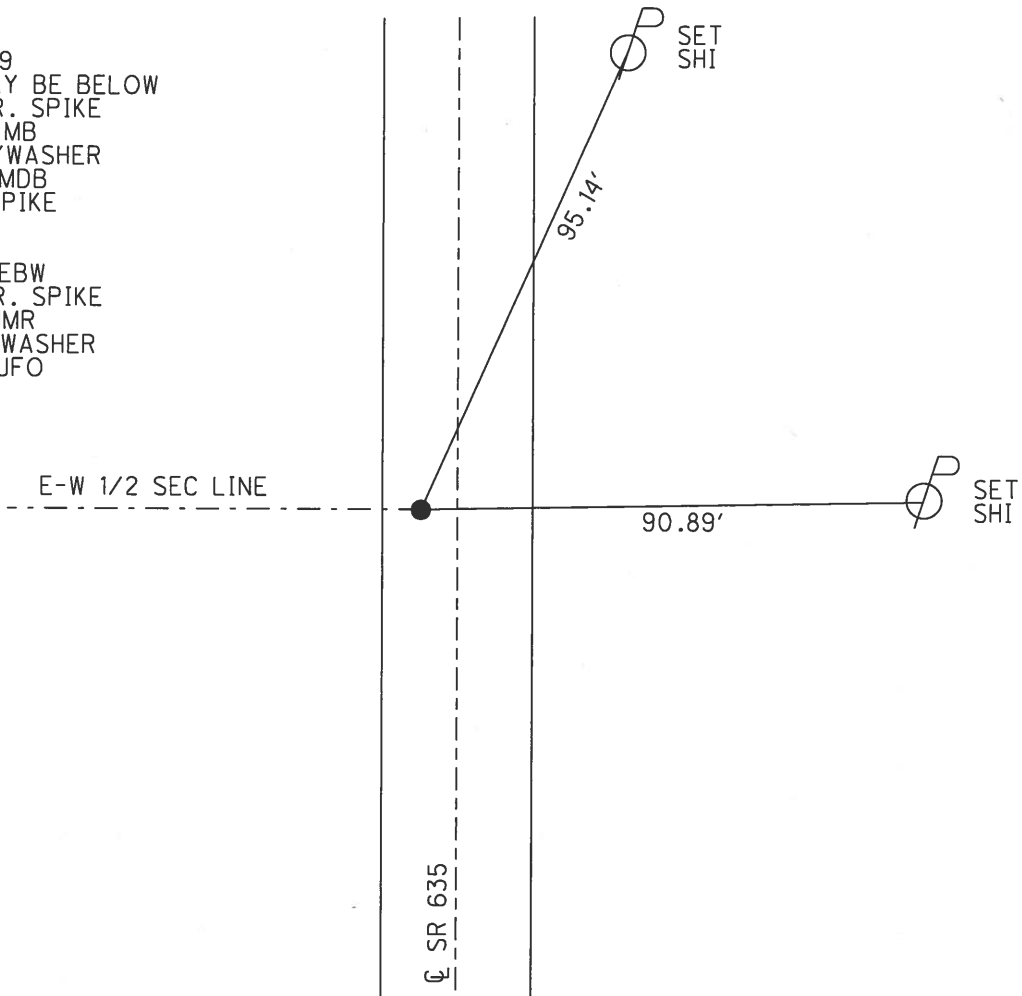
GEOID: NAVD88 2012A

GRID: NORTHING: 539693.969

EASTING: 1752269.151



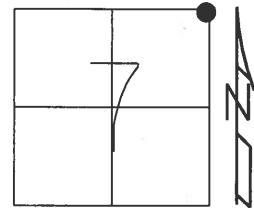
RECORD:  
 STA 45+59  
 STONE MAY BE BELOW  
 FD LG R.R. SPIKE  
 8-29-96, MB  
 SET P.K./WASHER  
 10-8-96, MDB  
 FD R.R. SPIKE  
 2" DOWN  
 REF3  
 3-30-15, EBW  
 FD SM R.R. SPIKE  
 6-12-18, JMR  
 SET MAG/WASHER  
 12-14-18, JFO



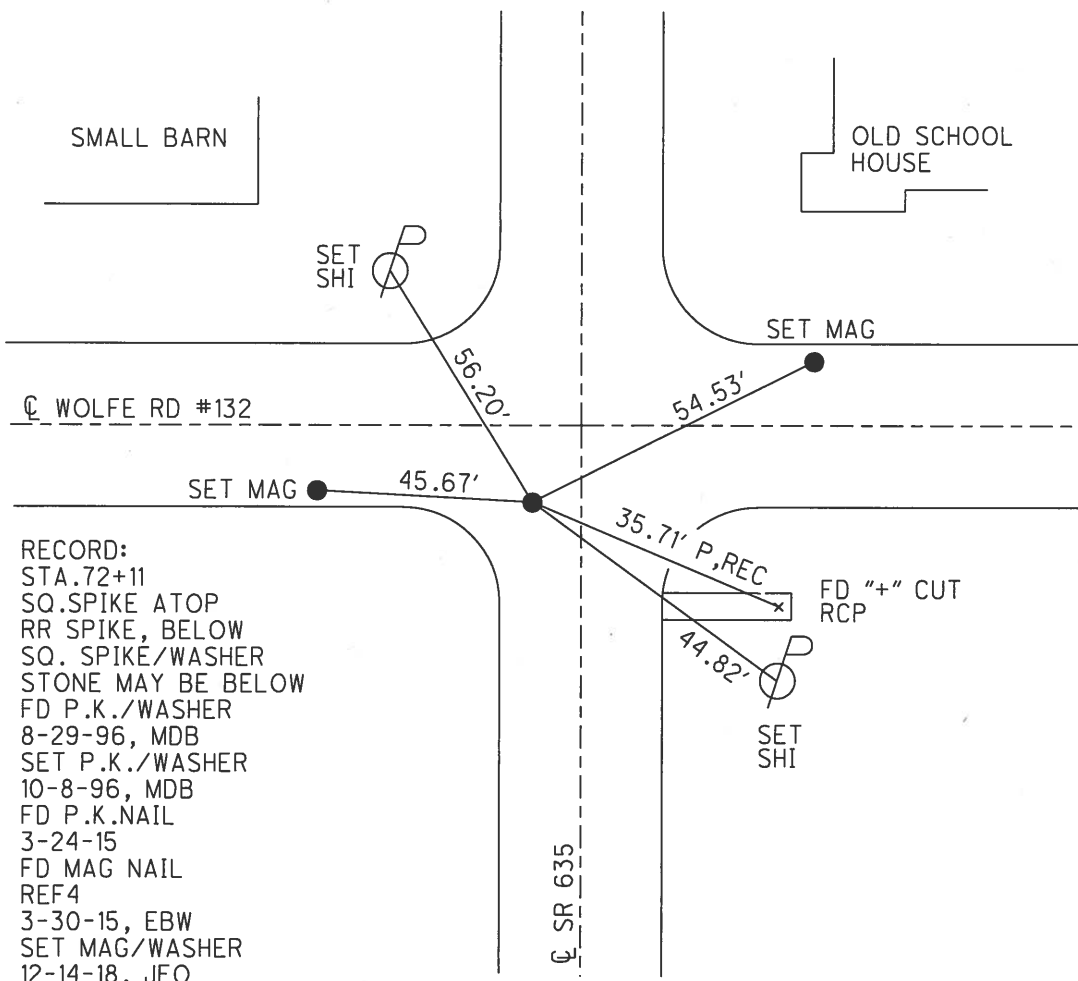
O.D.O.T. DISTRICT 2 SURVEY OFFICE (USE ONLY)

PERSONNEL \_\_\_\_\_ REFERENCE NO. 4 SHEET 3 OF 9  
 NOTES TRENKA DATE 6/12/18 ROUTE SR 635  
 H.C. RHOADES WEATHER CLOUDY COUNTY SENECA  
 R.C. TRENKA TEMP. 70°F TOWNSHIP HOPEWELL  
 SECTION 7  
 DWG BY MILLER PID 92128 T 2 N 14 E

TYPE MONUMENT P.K. SHANK  
 ON SURFACE - ~~BELOW~~ ON \_\_\_\_\_  
 OFFSET  $\odot$  PAVEMENT 3.6' LT : ~~RT~~  
6.2' TO LT EDGE PAVEMENT  
 STATION: 72+27.74



HORIZ. DATUM: NAD83 2011 GEOID: NAVD88 2012A  
 GRID: NORTHING: 542345.388 EASTING: 1752317.352



- RECORD:  
 STA. 72+11  
 SQ. SPIKE ATOP  
 RR SPIKE, BELOW  
 SQ. SPIKE/WASHER  
 STONE MAY BE BELOW  
 FD P.K./WASHER  
 8-29-96, MDB  
 SET P.K./WASHER  
 10-8-96, MDB  
 FD P.K.NAIL  
 3-24-15  
 FD MAG NAIL  
 REF4  
 3-30-15, EBW  
 SET MAG/WASHER  
 12-14-18, JFO

O.D.O.T. DISTRICT 2 SURVEY OFFICE (USE ONLY)

PERSONNEL

REFERENCE NO. 5

SHEET 4 OF 9

NOTES BARNHISEL

DATE 8/29/96

ROUTE SR 635

H.C. CORDES

WEATHER SUNNY

COUNTY SENECA

R.C. CANTERBURY

TEMP. 80°F

TOWNSHIP HOPEWELL

ROUSOS

SECTION 6

DWG BY MILLER PID 92128

T 2 N R 14 E

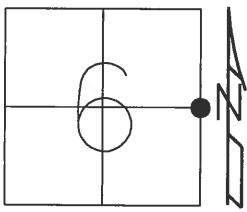
TYPE MONUMENT IPIPE SLANTED OVER STONE

~~ON SURFACE~~ - BELOW 3"

OFFSET CL PAVEMENT 19.9' ~~±~~ : RT

9.2' RT TO RT EDGE PAVEMENT

STATION: 98+81.64



HORIZ.DATUM: NAD83 2011

GEOID: NAVD88 2012A

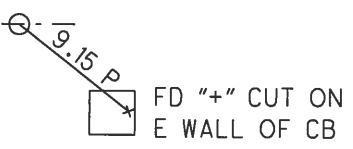
GRID: NORTHING: 544998.818

EASTING: 1752367.235

RECORD: 98+61  
10"x10"x10"± REC GRANITE  
STONE FD 7-10-73,  
15" BELOW SURFACE ALONG  
WITH OLD WIRE, STAPLES +  
PART OF WOODEN POST.  
FD IPIPE SLANTED OVER STONE  
8-29-96, MDB  
FD 1.5" IPIPE  
0.3' DOWN LEANING EAST  
REF5  
3-30-15, EBW

E/W  $\frac{1}{2}$  SEC LINE  
SEC 6

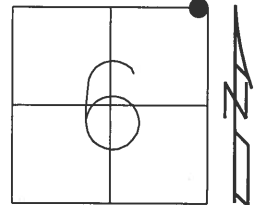
CL SR 635



O.D.O.T. DISTRICT 2 SURVEY OFFICE (USE ONLY)

PERSONNEL	REFERENCE NO. <u>6</u>	SHEET <u>5</u> OF <u>9</u>
NOTES <u>TRENKA</u>	DATE <u>6/12/18</u>	ROUTE <u>SR 635</u>
H.C. <u>RHOADES</u>	WEATHER <u>CLOUDY</u>	COUNTY <u>SENECA</u>
R.C. <u>TRENKA</u>	TEMP. <u>70°F</u>	TOWNSHIP <u>HOPEWELL</u>
DWG BY <u>MILLER</u>	PID <u>92128</u>	SECTION <u>6</u>
		T <u>2</u> N R <u>14</u> E

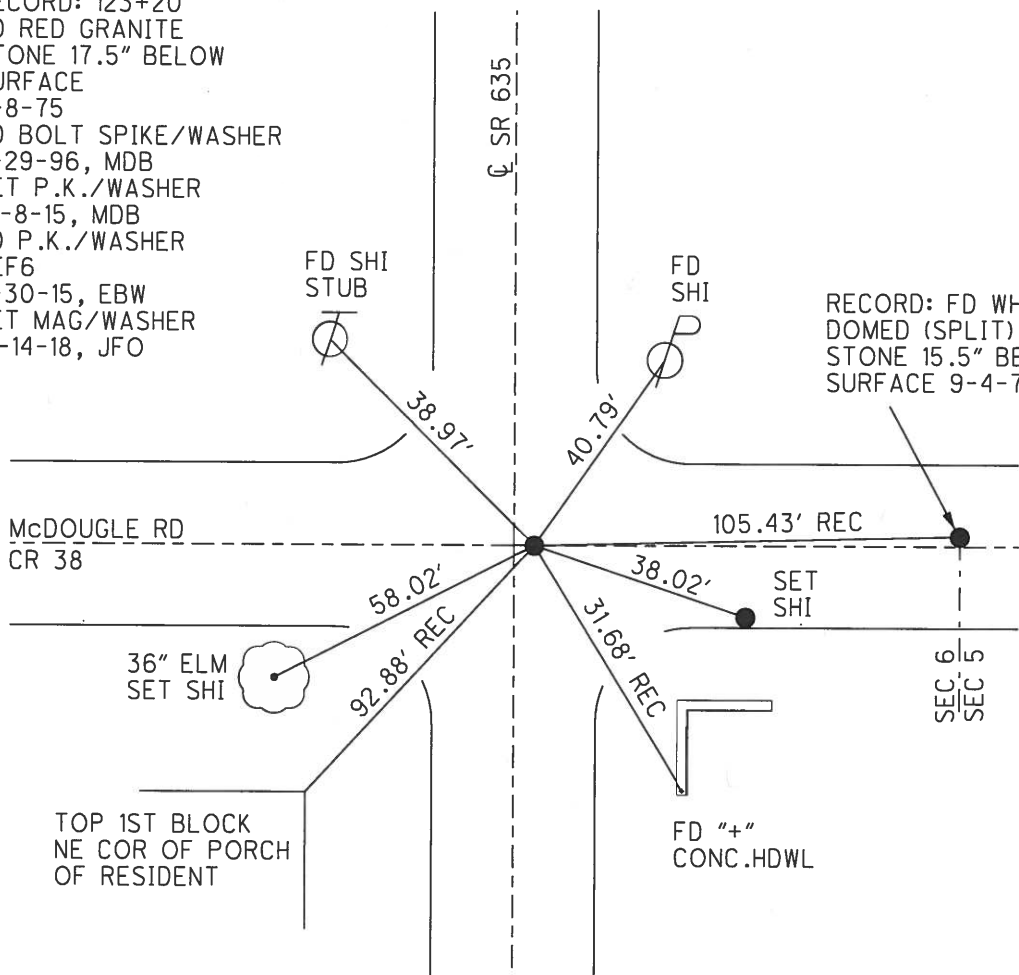
TYPE MONUMENT MAG/WASHER  
 ON SURFACE - ~~BELOW~~ ON  
 OFFSET  $\bar{C}$  PAVEMENT 1.9' ~~IT~~ : RT  
8.3 TO RT EDGE PAVEMENT  
 STATION: 123+35.47



HORZ. DATUM: NAD83 2011 GEOID: NAVD88 2012A  
 GRID: NORTHING: 547451.912 EASTING: 1752306.956

RECORD: 123+20  
 FD RED GRANITE  
 STONE 17.5" BELOW  
 SURFACE  
 9-8-75  
 FD BOLT SPIKE/WASHER  
 8-29-96, MDB  
 SET P.K./WASHER  
 10-8-15, MDB  
 FD P.K./WASHER  
 REF6  
 3-30-15, EBW  
 SET MAG/WASHER  
 12-14-18, JFO

RECORD: FD WHITE  
 DOMED (SPLIT) CORNER  
 STONE 15.5" BELOW  
 SURFACE 9-4-75



O.D.O.T. DISTRICT 2 SURVEY OFFICE (USE ONLY)

PERSONNEL

REFERENCE NO. 7

SHEET 6 OF 9

NOTES TRENKA

DATE 6/12/18

ROUTE SR 635

H.C. RHOADES

WEATHER CLOUDY

COUNTY SENECA

R.C. TRENKA

TEMP. 72°F

TOWNSHIP LIBERTY

DWG BY MILLER

PID 92128

SECTION 31

T 3 N R 14 E

TYPE MONUMENT P.K. NAIL

~~ON SURFACE~~ - BELOW 2"

OFFSET  $\text{C}$  PAVEMENT 0.5' ~~±~~ : RT

9.5' TO RT EDGE PAVEMENT

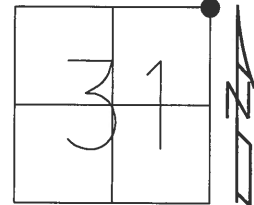
STATION: 176+46.49

HORZ. DATUM: NAD83 2011

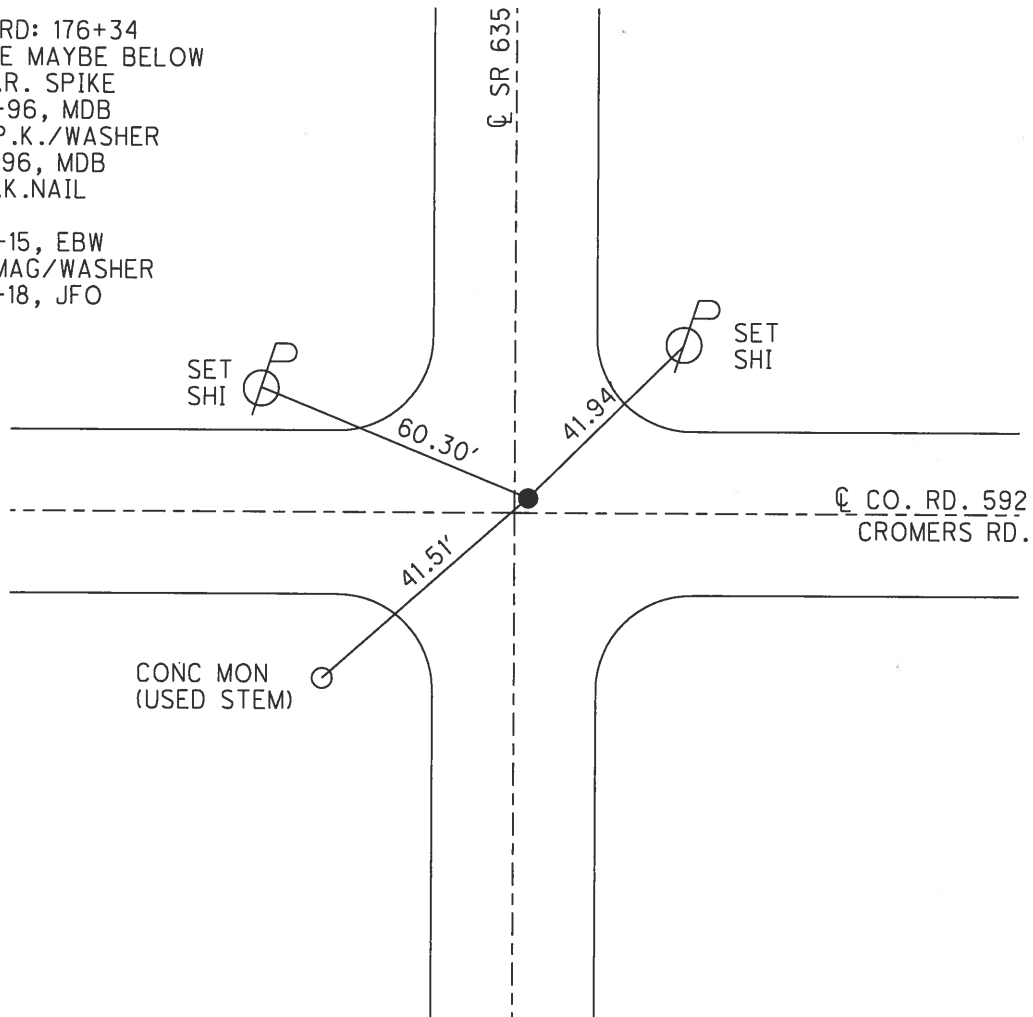
GEOID: NAVD88 2012A

GRID: NORTHING: 552756.953

EASTING: 1752558.695



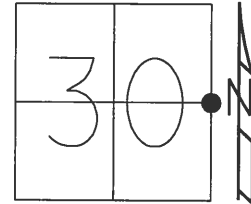
RECORD: 176+34  
STONE MAYBE BELOW  
LG R.R. SPIKE  
8-29-96, MDB  
SET P.K./WASHER  
10-8-96, MDB  
FD P.K.NAIL  
REF7  
3-30-15, EBW  
SET MAG/WASHER  
12-14-18, JFO



O.D.O.T. DISTRICT 2 SURVEY OFFICE (USE ONLY)

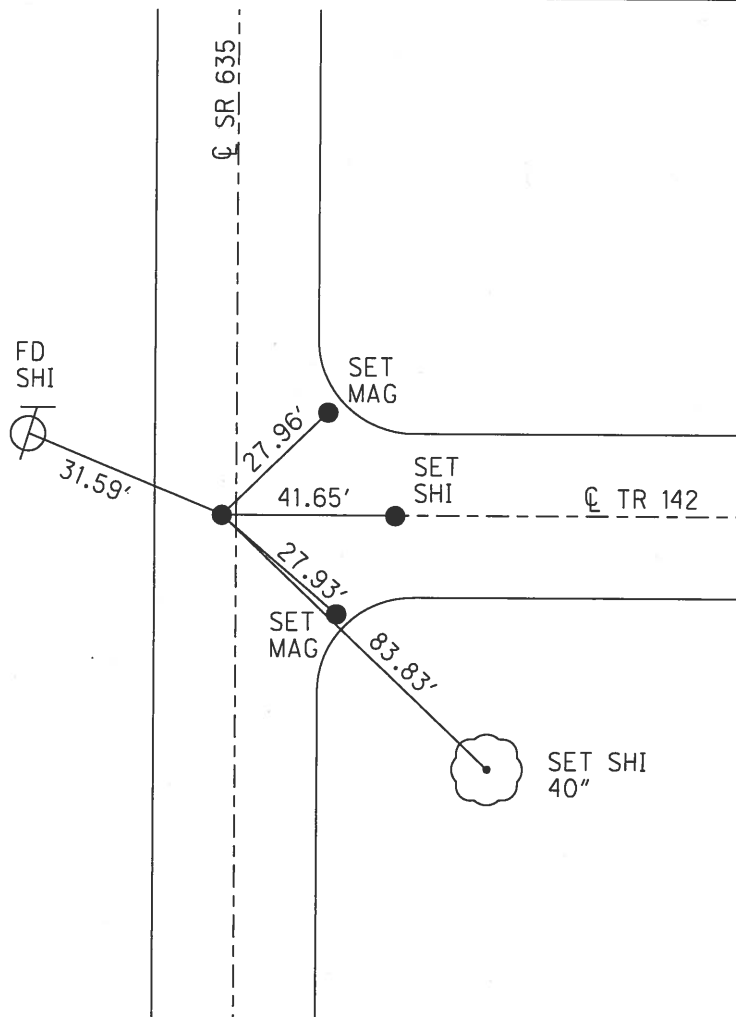
PERSONNEL \_\_\_\_\_ REFERENCE NO. 8 SHEET 7 OF 9  
 NOTES TRENKA DATE 6/12/18 ROUTE SR 635  
 H.C. RHOADES WEATHER CLOUDY COUNTY SENECA  
 R.C. TRENKA TEMP. 70°F TOWNSHIP LIBERTY  
 DWG BY MILLER PID 92128 SECTION 30  
 T 3 N R 14 E

TYPE MONUMENT P.K./WASHER  
 ON SURFACE - ~~BELOW~~ ON \_\_\_\_\_  
 OFFSET Q PAVEMENT 1.2' LT : ~~RT~~  
8.9' TO LT EDGE PAVEMENT  
 STATION: 203+08.82



HORIZ. DATUM: NAD83 2011 GEOID: NAVD88 2012A  
 GRID: NORTHING: 555418.223 EASTING: 1752634.108

RECORD:  
 STA. 202+74±  
 R.R. SPIKE 3.75"  
 BELOW SURFACE  
 ATOP HUB  
 BOLT SPIKE  
 8-29-96, MDB  
 SET P.K./WASHER  
 10-8-96, MDB  
 FD P.K./WASHER  
 REF8  
 3-30-15, EBW  
 FD R.R. SPIKE  
 3" DOWN  
 REFA8  
 SET MAG/WASHER  
 12-14-18, JFO





O.D.O.T. DISTRICT 2 SURVEY OFFICE (USE ONLY)

PERSONNEL \_\_\_\_\_ REFERENCE NO. 9 SHEET 8 OF 9  
 NOTES TRENKA DATE 6/12/18 ROUTE SR 635  
 H.C. RHOADES WEATHER CLOUDY COUNTY SENECA  
 R.C. TRENKA TEMP. 72°F TOWNSHIP LIBERTY  
 DWG BY MILLER PID 92128 SECTION 19  
 T 3 N R 14 E

TYPE MONUMENT P.K./WASHER

ON SURFACE - ~~BELOW~~ ON \_\_\_\_\_

OFFSET ℄ PAVEMENT 1' ~~℄~~ : RT

8.9' TO RT EDGE PAVEMENT

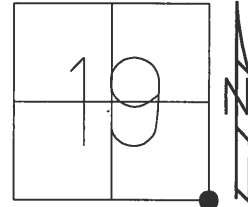
STATION: 229+72.47

HORZ. DATUM: NAD83 2011

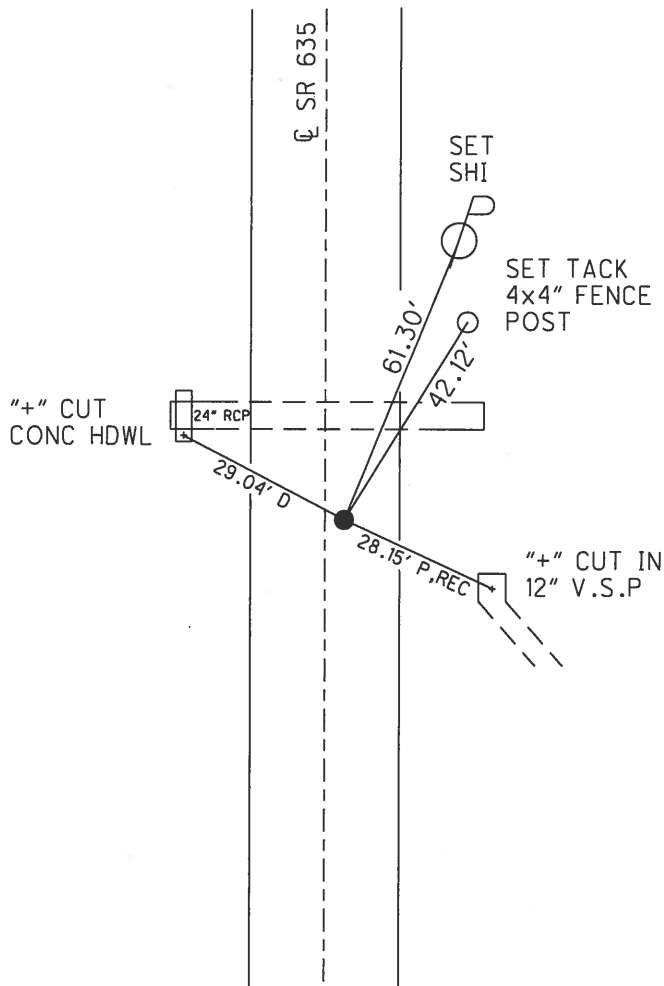
GEOID: NAVD88 2012A

GRID: NORTHING: 558081.074

EASTING: 1752698.942



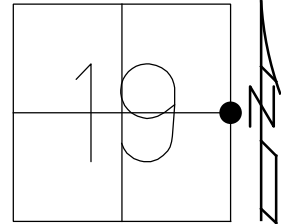
RECORD:  
 STA. 229+48  
 R.R. ATOP  
 R.R. SPIKE  
 4.5" DOWN  
 STONE MAYBE BELOW  
 FD LG R.R. SPIKE  
 8-29-96, MDB  
 SET P.K./WASHER  
 10-8-96, MDB  
 FD P.K./WASHER  
 REF9  
 3-30-15, EBW  
 SET MAG/WASHER  
 12-14-18, JFO



O.D.O.T. DISTRICT 2 SURVEY OFFICE (USE ONLY)

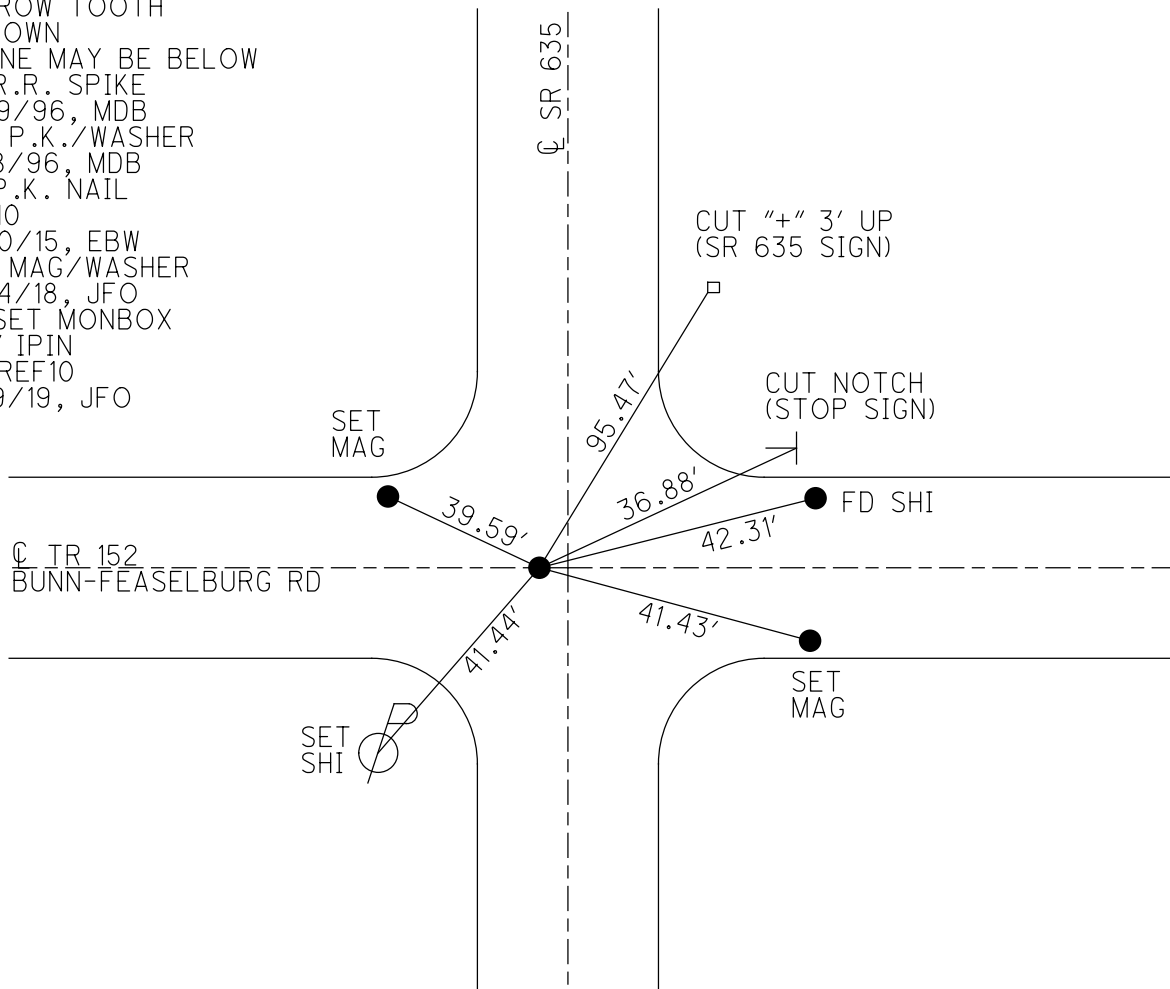
PERSONNEL \_\_\_\_\_ REFERENCE NO. 10 SHEET 10 OF 10  
 NOTES TRENKA DATE 6/13/18 ROUTE SR 635  
 H.C. RHOADES WEATHER CLOUDY COUNTY SENECA  
 R.C. TRENKA TEMP. 73°F TOWNSHIP LIBERTY  
 \_\_\_\_\_ SECTION 19  
 DWG BY NASON PID 92128 T 3 N R 14 E

TYPE MONUMENT P.K. NAIL  
 ON SURFACE - ~~BELOW~~ ON \_\_\_\_\_  
 OFFSET  $\odot$  PAVEMENT 1.5' ~~LT~~ : RT  
8.4' TO LT EDGE PAVEMENT  
 STATION: 257+01.08



HORIZ. DATUM: NAD83 2011 GEOID: NAVD88 2012A  
 GRID: NORTHING: 560738.388 EASTING: 1752684.370

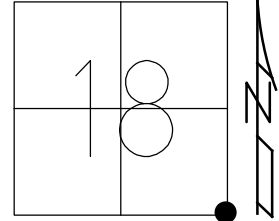
RECORD:  
 STA. 256+22  
 HARROW TOOTH  
 4" DOWN  
 STONE MAY BE BELOW  
 LG R.R. SPIKE  
 8/29/96, MDB  
 SET P.K./WASHER  
 10/8/96, MDB  
 FD P.K. NAIL  
 REF10  
 3/30/15, EBW  
 SET MAG/WASHER  
 12/14/18, JFO  
 FD SET MONBOX  
 W/1" IPIN  
 NEWREF10  
 10/9/19, JFO



O.D.O.T. DISTRICT 2 SURVEY OFFICE (USE ONLY)

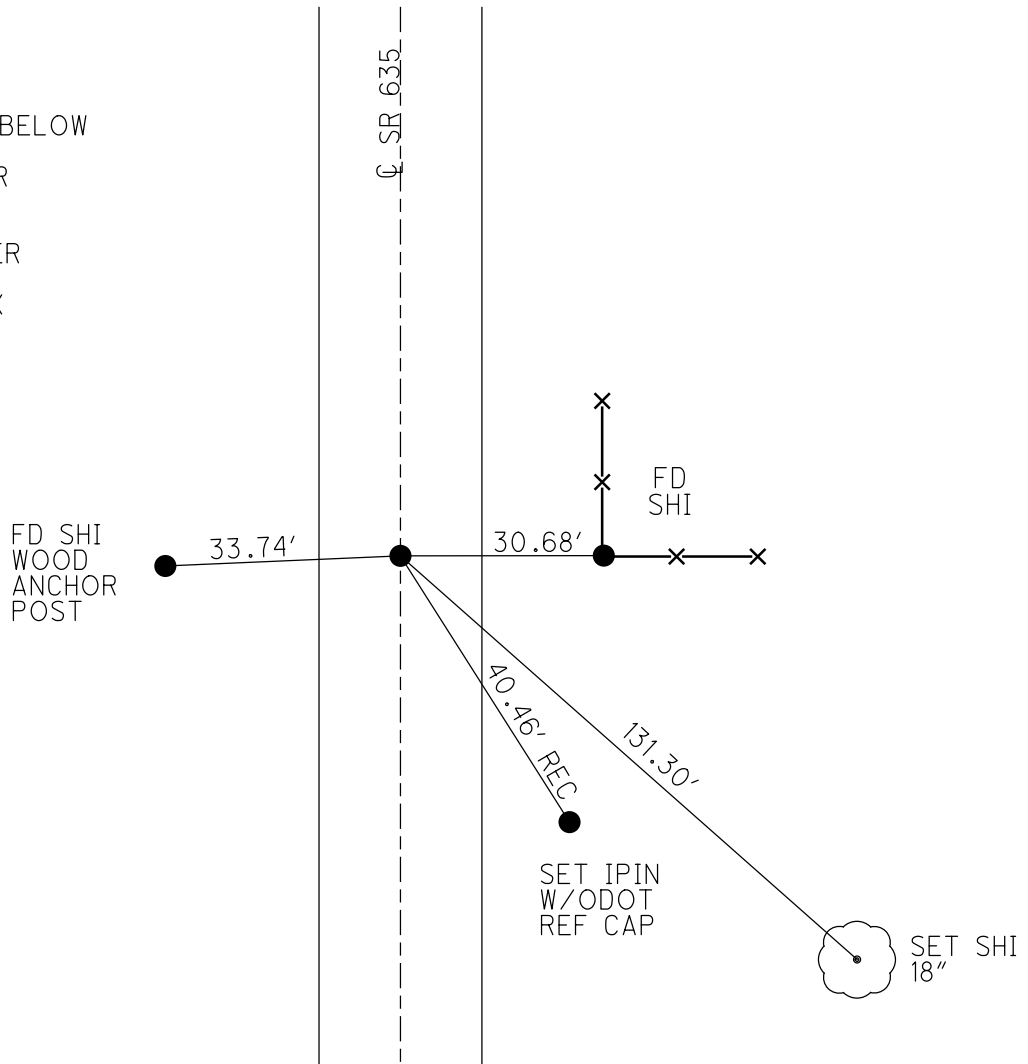
PERSONNEL \_\_\_\_\_ REFERENCE NO. 11 SHEET 1 OF 8  
 NOTES TRENKA DATE 6/13/18 ROUTE SR 635  
 H.C. RHOADES WEATHER CLOUDY COUNTY SENECA  
 R.C. TRENKA TEMP. 74°F TOWNSHIP LIBERTY  
 DWG BY NASON PID 92128 SECTION 18  
 T 3 N R 14 E

TYPE MONUMENT P.K./WASHER  
 ON SURFACE - ~~BELOW~~ ON  
 OFFSET Q PAVEMENT ON ~~LT~~ : ~~RT~~  
10.3' TO LT EDGE PAVEMENT  
 STATION: 283+56.06



HORZ.DATUM: NAD83 2011 GEOID: NAVD88 2012A  
 GRID: NORTHING: 563393.377 EASTING: 1752683.652

RECORD:  
 FD R.R.SPIKE  
 ATOP IPIN  
 3" DOWN  
 STONE MAY BE BELOW  
 7/5/11, KPM  
 FD P.K./WASHER  
 REF11  
 3/30/15, EBW  
 SET MAG/WASHER  
 12/14/18, JFO  
 FD SET MONBOX  
 W/1" IPIN  
 NEWREF11  
 10/9/19, JFO



O.D.O.T. DISTRICT 2 SURVEY OFFICE (USE ONLY)

PERSONNEL

REFERENCE NO. 12

SHEET 2 OF 8

NOTES TRENKA

DATE 6-13-18

ROUTE SR 635

H.C. RHOADES

WEATHER CLOUDY

COUNTY SENECA

R.C. TRENKA

TEMP. 74°F

TOWNSHIP LIBERTY

DWG BY JAMES PID 92128

SECTION 18

T 3 N R 14 E

TYPE MONUMENT P.K./WASHER

ON SURFACE - ~~BELOW~~ ON

OFFSET ☉ PAVEMENT ON LT : RT

9.9' TO RT EDGE PAVEMENT

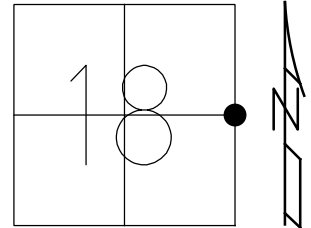
STATION: 309+28.17

HORIZ.DATUM: NAD83 2011

GEOID: NAVD88 2012A

GRID: NORTHING: 566036.712

EASTING: 1752693.822



TOP SE COR  
S. I-BEAM  
BELL STRUCTURE



92.73'

FD SHI  
40" MAPLE



45.26'

93.55'

FD SHI



☉ SR 635

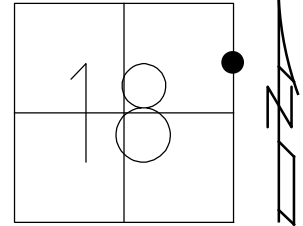
RECORD:  
RR SPIKE  
ATOP IPIN  
3" BELOW SURFACE  
STONE MAY BE BELOW  
7-5-11, KPM  
FD P.K./WASHER  
REF12  
3-30-15, EBW  
SET MAG/WASHER  
12-14-18, JFO

O.D.O.T. DISTRICT 2 SURVEY OFFICE (USE ONLY)

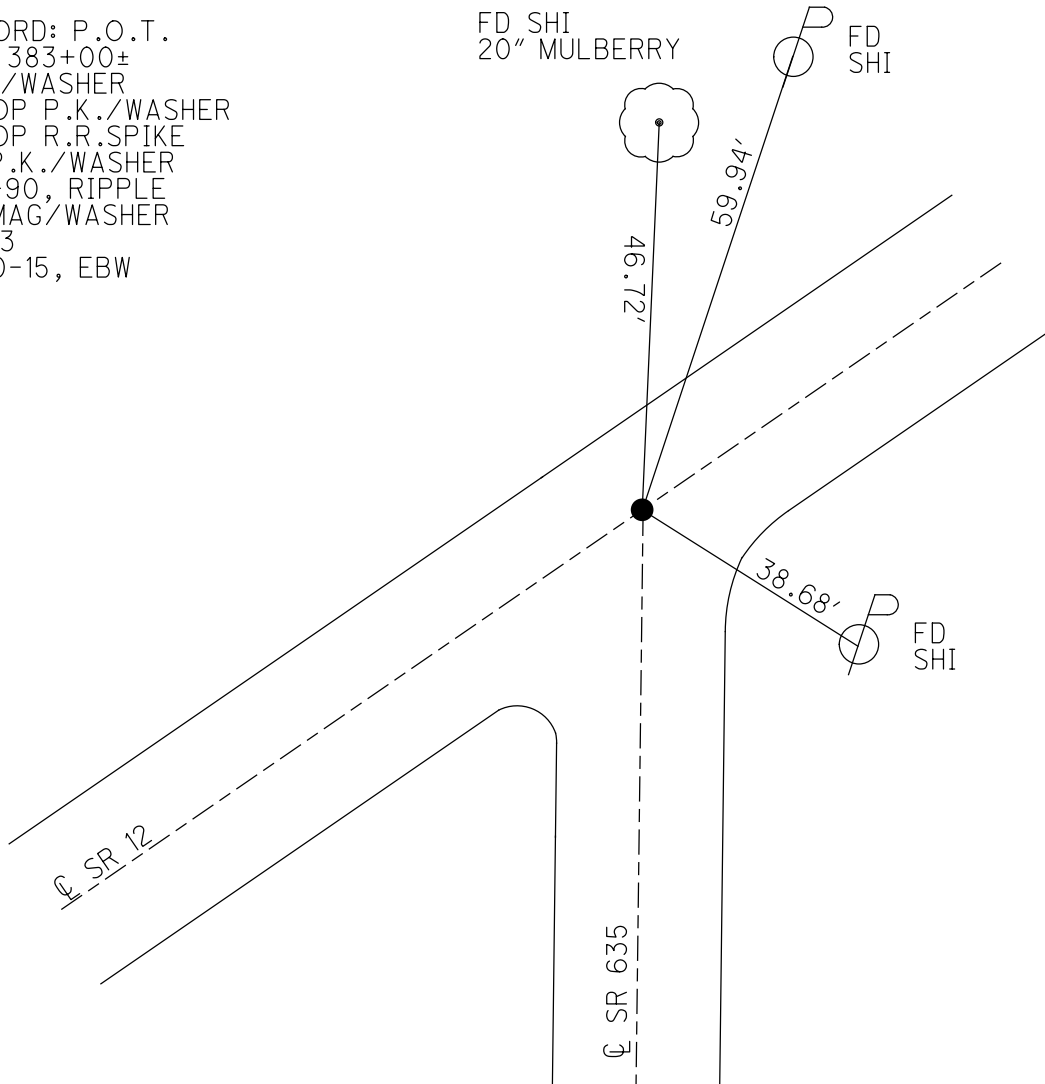
PERSONNEL \_\_\_\_\_ REFERENCE NO. 13 SHEET 3 OF 8  
 NOTES CRONIN DATE 2-5-90 ROUTE SR 635  
 H.C. RIPPLE WEATHER SUNNY-WINDY COUNTY SENECA  
 R.C. BARBOUR TEMP. 37° TOWNSHIP LIBERTY  
 \_\_\_\_\_ GEYMAN \_\_\_\_\_ SECTION 18  
 DWG BY JAMES PID 92128 T 3 N R 14 E

TYPE MONUMENT P.K./WASHER  
 ON SURFACE - ~~BELOW~~ ON \_\_\_\_\_  
 OFFSET  $\odot$  PAVEMENT \_\_\_\_\_ LT : RT \_\_\_\_\_  
 \_\_\_\_\_ TO \_\_\_\_\_ EDGE PAVEMENT \_\_\_\_\_  
 STATION: 320+76.83

HORIZ.DATUM: NAD83 2011 GEOID: NAVD88 2012A  
 GRID: NORTHING: 567185.311 EASTING: 1752705.317



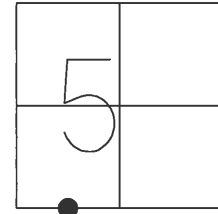
RECORD: P.O.T.  
 STA 383+00±  
 P.K./WASHER  
 A TOP P.K./WASHER  
 A TOP R.R.SPIKE  
 FD P.K./WASHER  
 2-5-90, RIPPLE  
 FD MAG/WASHER  
 REF13  
 3-30-15, EBW



O.D.O.T. DISTRICT 2 SURVEY OFFICE (USE ONLY)

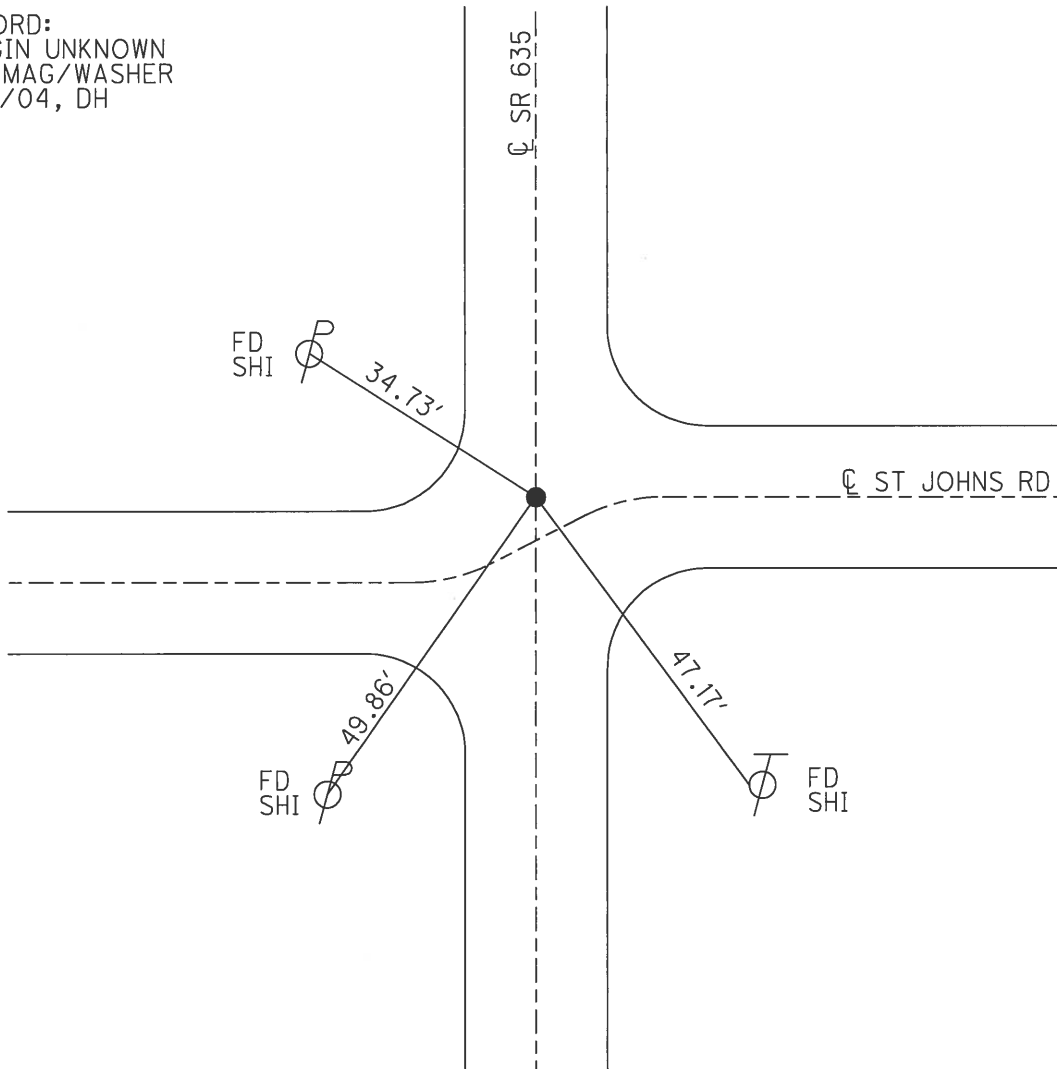
PERSONNEL \_\_\_\_\_ REFERENCE NO. 14 SHEET 3 OF 7  
 NOTES HOMAN DATE 4/26/04 ROUTE SR 635  
 H.C. ARMS WEATHER SUNNY COUNTY SENECA  
 R.C. HOOKER TEMP. 60° TOWNSHIP LIBERTY  
 \_\_\_\_\_ SECTION 5  
 \_\_\_\_\_ T 3 N R 14 E

TYPE MONUMENT 1/2" IPIN  
~~ON SURFACE~~ - BELOW 1 1/2"  
 LEFT - ☉ PAV'T - RIGHT ON  
- TO - EDGE PAVEMENT  
 S.L.M. 395+70



GRID: NORTHING: \_\_\_\_\_ EASTING: \_\_\_\_\_

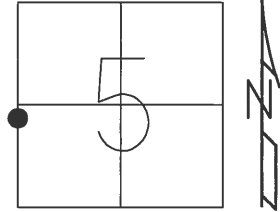
RECORD:  
 ORIGIN UNKNOWN  
 SET MAG/WASHER  
 8/13/04, DH



O.D.O.T. DISTRICT 2 SURVEY OFFICE (USE ONLY)

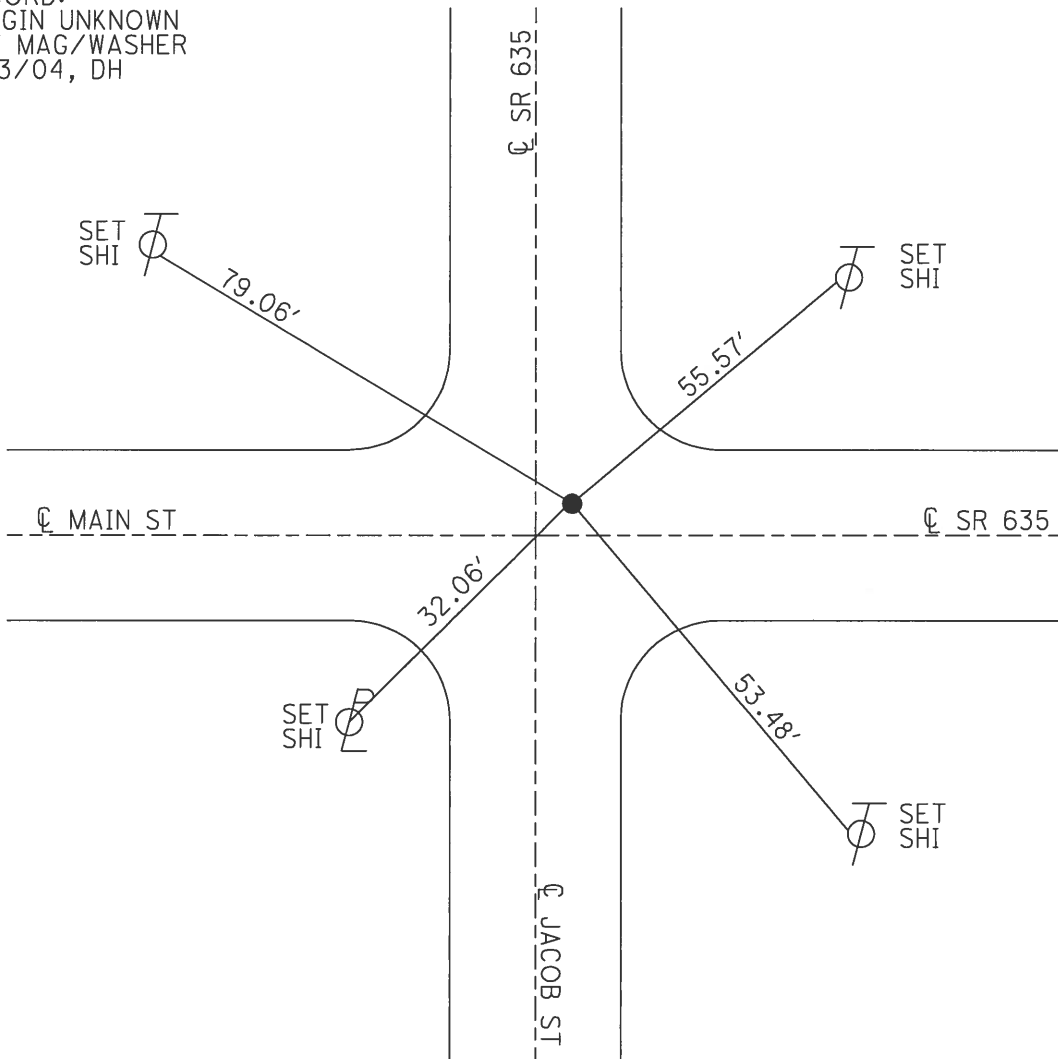
PERSONNEL \_\_\_\_\_ REFERENCE NO. 15 SHEET 4 OF 7  
 NOTES HOMAN DATE 4/26/04 ROUTE SR 635  
 H.C. ARMS WEATHER SUNNY COUNTY SENECA  
 R.C. HOOKER TEMP. 60° TOWNSHIP LIBERTY  
 SECTION 5  
 T 3 N R 14 E

TYPE MONUMENT P.K.NAIL  
 ON SURFACE - ~~BELOW~~ ON \_\_\_\_\_  
~~LEFT = C PAV'T~~ - RIGHT 3.5' N & E  
 TO \_\_\_\_\_ EDGE PAVEMENT  
 S.L.M. 428+77



GRID: NORTHING: \_\_\_\_\_ EASTING: \_\_\_\_\_

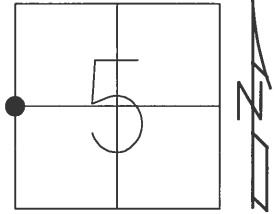
RECORD:  
 ORIGIN UNKNOWN  
 SET MAG/WASHER  
 8/13/04, DH



O.D.O.T. DISTRICT 2 SURVEY OFFICE (USE ONLY)

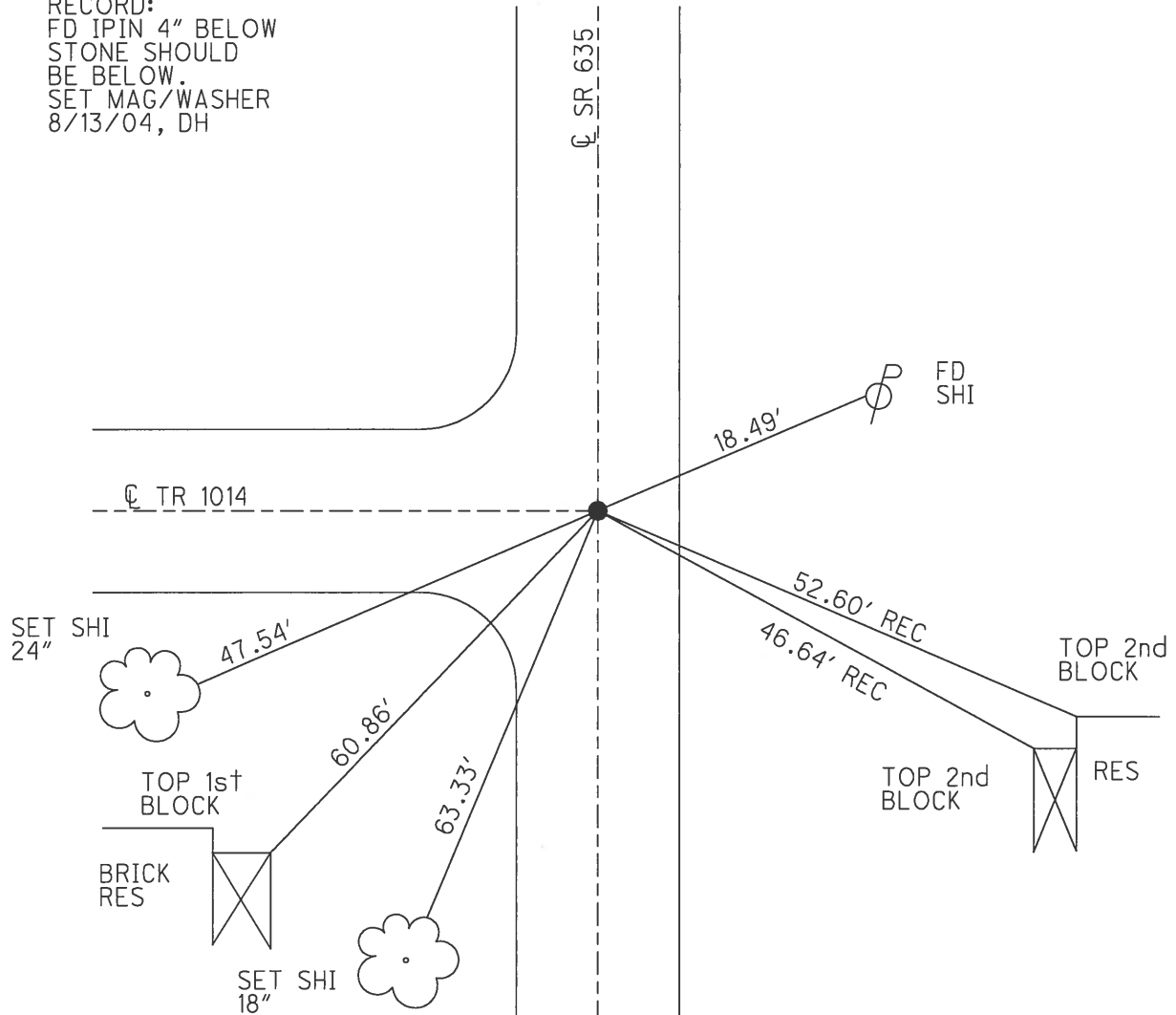
PERSONNEL \_\_\_\_\_ REFERENCE NO. 16 SHEET 5 OF 7  
 NOTES HOMAN DATE 4/26/04 ROUTE SR 635  
 H.C. ARMS WEATHER SUNNY COUNTY SENECA  
 R.C. HOOVER TEMP. 60° TOWNSHIP LIBERTY  
 SECTION 5  
 T 3 N R 14 E

TYPE MONUMENT P.K.NAIL  
 ON SURFACE - ~~BELOW~~ ON \_\_\_\_\_  
~~LEFT~~ - CL PAV'T = ~~RIGHT~~ ON \_\_\_\_\_  
 - TO - EDGE PAVEMENT  
 S.L.M. 435+05



GRID: NORTHING: \_\_\_\_\_ EASTING: \_\_\_\_\_

RECORD:  
 FD IPIN 4" BELOW  
 STONE SHOULD  
 BE BELOW.  
 SET MAG/WASHER  
 8/13/04, DH



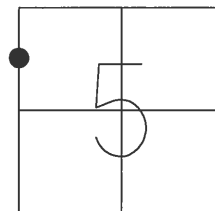


O.D.O.T. DISTRICT 2 SURVEY OFFICE (USE ONLY)

PERSONNEL \_\_\_\_\_ REFERENCE NO. 18 SHEET 6 OF 7

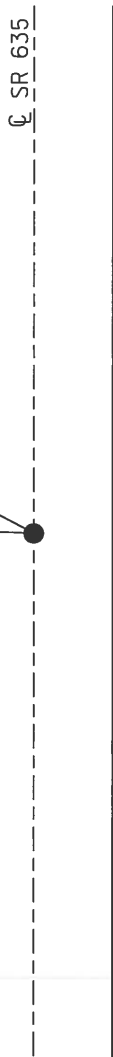
NOTES HOMAN DATE 4/26/04 ROUTE SR 635  
 H.C. ARMS WEATHER SUNNY COUNTY SENECA  
 R.C. HOOKER TEMP. 60° TOWNSHIP LIBERTY  
 \_\_\_\_\_ SECTION 5  
 \_\_\_\_\_ T 3 N R 14 E

TYPE MONUMENT P.K./WASHER  
 ON SURFACE - ~~BELOW~~ ON \_\_\_\_\_  
 LEFT - ~~C PAV'T - RIGHT~~ 0.5'  
9.2' TO LT EDGE PAVEMENT  
 S.L.M. 447+62

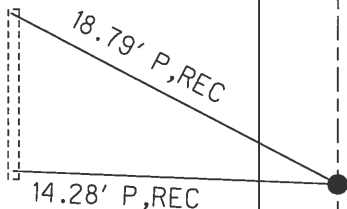


GRID: NORTHING: \_\_\_\_\_ EASTING: \_\_\_\_\_

RECORD:  
 SET P.K./WASHER  
 A TOP P.K./WASHER  
 A TOP R.R. SPIKE  
 A TOP IRON PIPE  
 SET MAG NAIL  
 8/13/04



"X" CUTS 0.8'  
 IN FROM ENDS  
 STEEL PIPE



O.D.O.T. DISTRICT 2 SURVEY OFFICE (USE ONLY)

PERSONNEL \_\_\_\_\_ REFERENCE NO. 19 SHEET 8 OF 8

NOTES NUHFER DATE 4/28/04 ROUTE SR 635

H.C. HOOKE WEATHER CLOUDY COUNTY SENECA

R.C. HOMAN TEMP. 50° TOWNSHIP LIBERTY

ARMS SECTION 5

T 3 N R 14 E

TYPE MONUMENT MONBOX

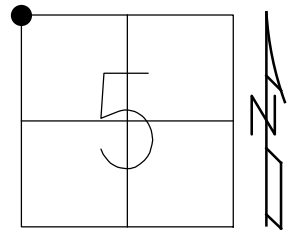
ON SURFACE - ~~BELOW~~ ON \_\_\_\_\_

~~LEFT - C PAV'T~~ - RIGHT 2'

- TO - EDGE PAVEMENT

S.L.M. 460+20

GRID: NORTHING: \_\_\_\_\_ EASTING: \_\_\_\_\_



DID NOT OPEN MONUMENT BOX. DISTANCES MEASURED TO THE NEAREST TENTH TO THE CENTER OF MONUMENT BOX LID.

