

O.D.O.T. DISTRICT 2 SURVEY OFFICE (USE ONLY)

PERSONNEL

REFERENCE NO. 1 A

SHEET 1 OF 10

NOTES RHOADES

DATE 12/19/18

ROUTE SR 635

H.C. O'DONNELL

WEATHER FAIR

COUNTY SENECA

R.C. RHOADES

TEMP. 35°

TOWNSHIP HOPEWELL

SECTION 18

DWG BY RHOADES PID 92128

T 2 N R 14 E

TYPE MONUMENT MONBOX W/1" IPIN

ON SURFACE - ~~BELOW~~ ON

OFFSET \bar{C} PAVEMENT - _____ LT : RT

- _____ TO - _____ EDGE PAVEMENT

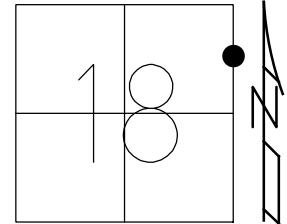
STATION: 0+00

HORIZ.DATUM: NAD83 2011

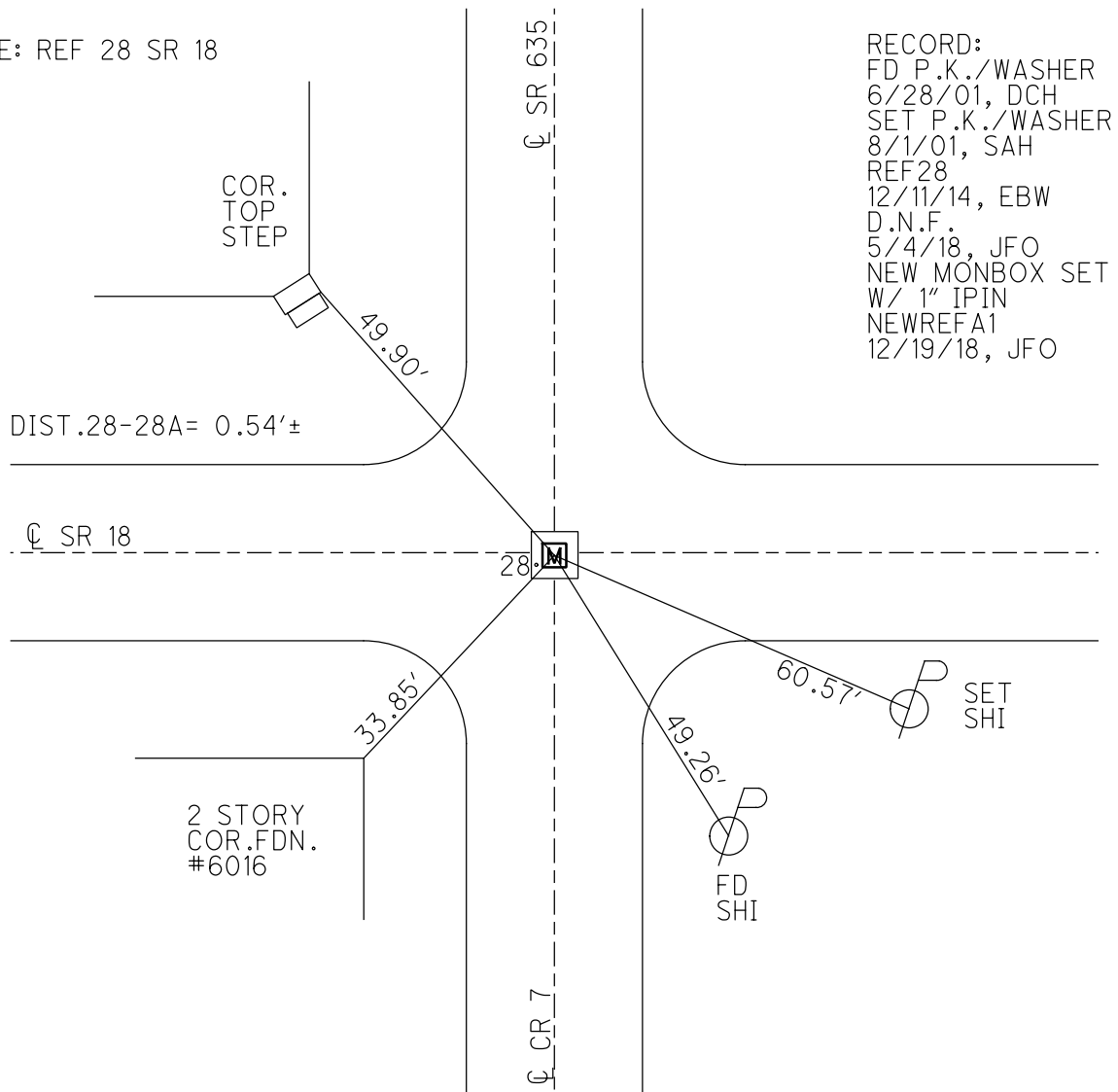
GEOID: 2012A

GRID: NORTHING: 535118.908

EASTING: 1752183.195



NOTE: REF 28 SR 18



RECORD:
 FD P.K./WASHER
 6/28/01, DCH
 SET P.K./WASHER
 8/1/01, SAH
 REF28
 12/11/14, EBW
 D.N.F.
 5/4/18, JFO
 NEW MONBOX SET
 W/ 1" IPIN
 NEWREFA1
 12/19/18, JFO

O.D.O.T. DISTRICT 2 SURVEY OFFICE

PERSONNEL _____

REFERENCE NO. 1

SHEET 1 OF 15

NOTES Crown

DRAWN 6/23/86

H.C. Ripple

DATE 6/20/86

ROUTE #635

R.C. _____

WEATHER overcast

COUNTY Seneca

TEMP. 68°

TOWNSHIP Hopewell

SECTION 17 & 18

T.L.N.R. 14 E

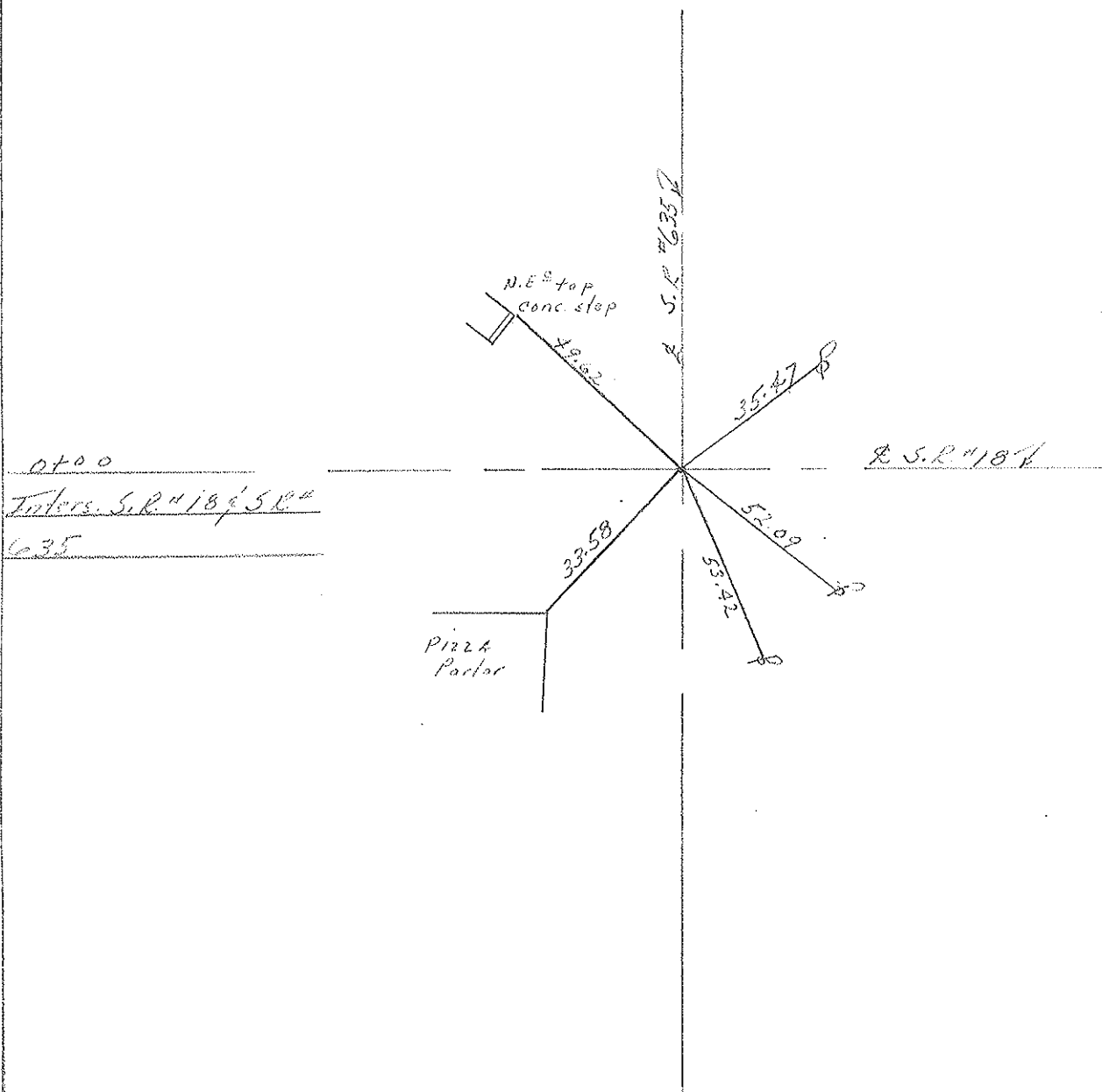
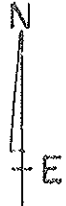
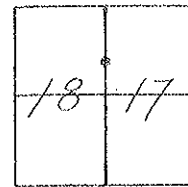
TYPE MONUMENT small spike (from 1984 notes)

ON SURFACE - BELOW on surface

LEFT - @ PAV'T. - RIGHT & P.V.T.

TO _____ EDGE PAVEMENT

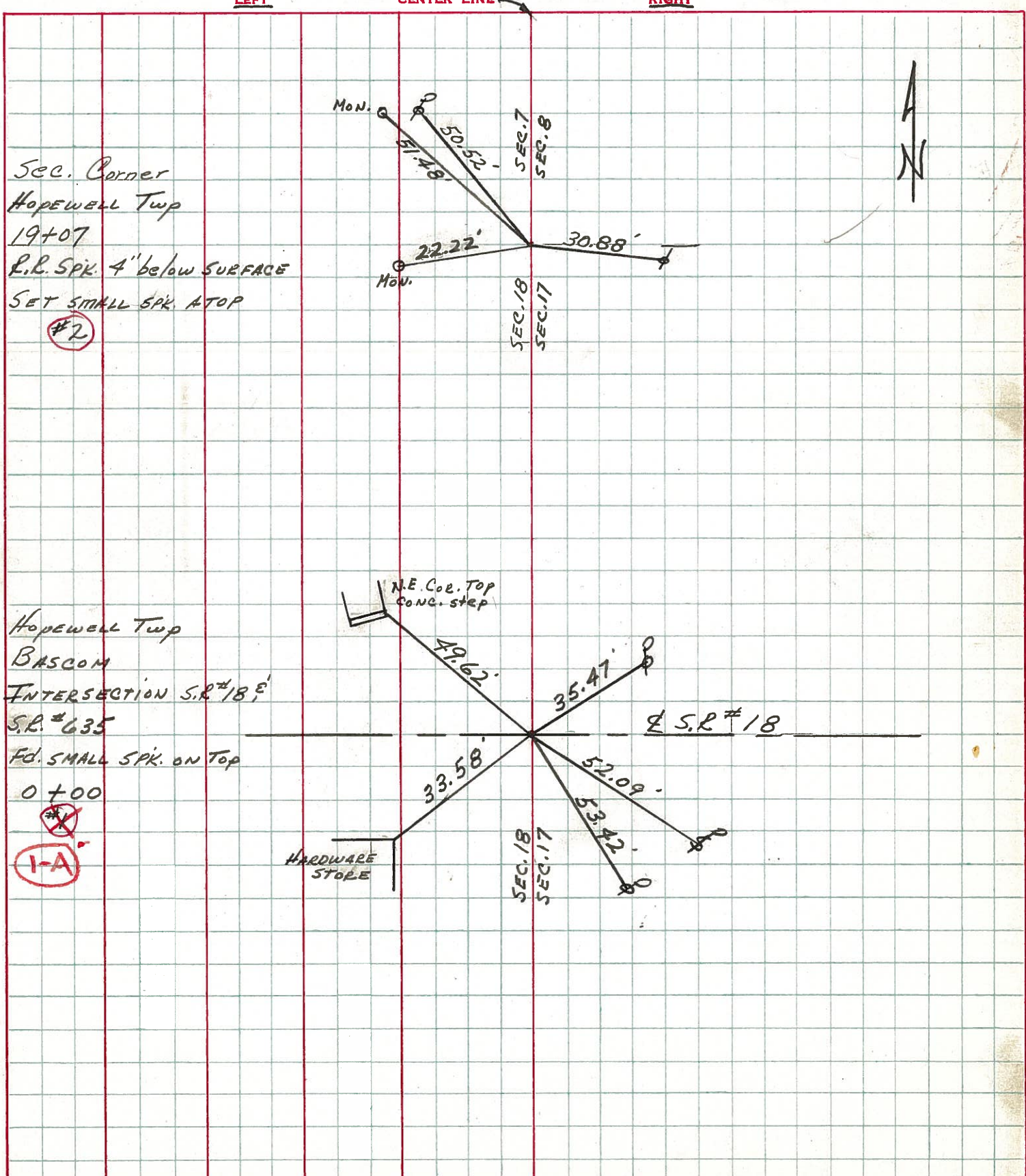
S.L.M. 0.00



PERSONNEL	TITLE	PERSONNEL	TITLE
CROWN			

COUNTY SENECA DATE JUNE 1971
 S. R. # 635 WEATHER _____
 SEC Bascom to Sand Co. Line TEMP. _____

DESCRIPTION Ties For Control Points JOB NO. _____



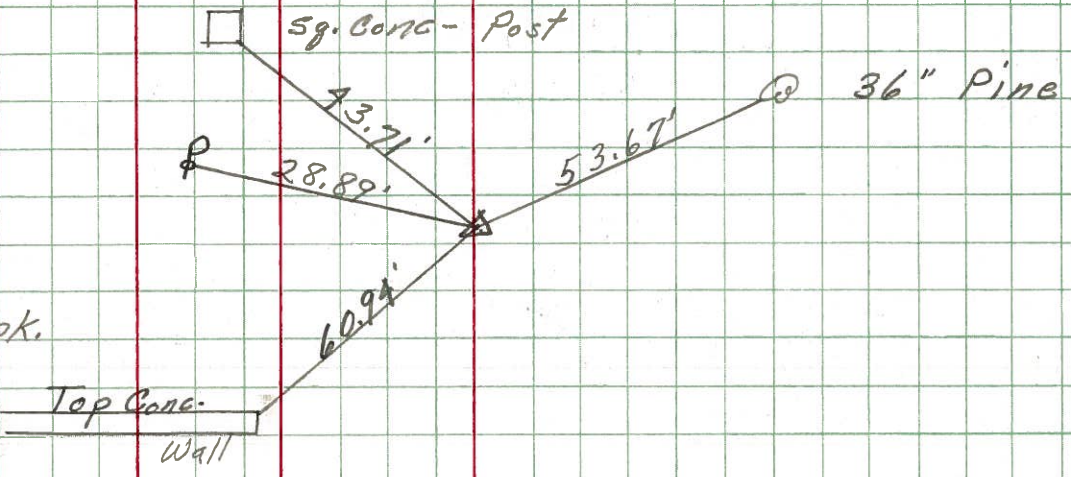
PERSONNEL	TITLE	PERSONNEL	TITLE	COUNTY	DATE
Schneider		Potts		Seneca	6-3-68
Mosser				S. R. 635	WEATHER Fair
Barbour				SEC. S.R.#18 to S.R.#12	TEMP. 65°
Redding					

DESCRIPTION Ties for Control Points JOB NO. _____

③

45+59
 Ed. R.R. spk.
 3" down
 Reset small spk.
 7-17-68

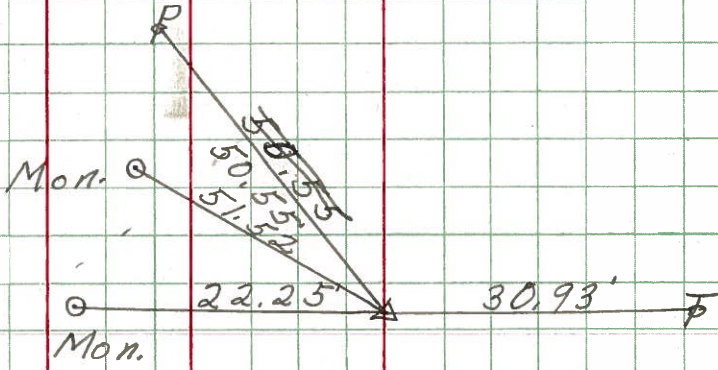
8738



②

19+0.7
 Ed. R.R. spk.
 3" down
 Reset small spk.
 7-17-68

8737



1-A

0+00
 Ed. spk. on top
 Bascom

8736



PERSONNEL TITLE PERSONNEL TITLE

COUNTY Seneca DATE

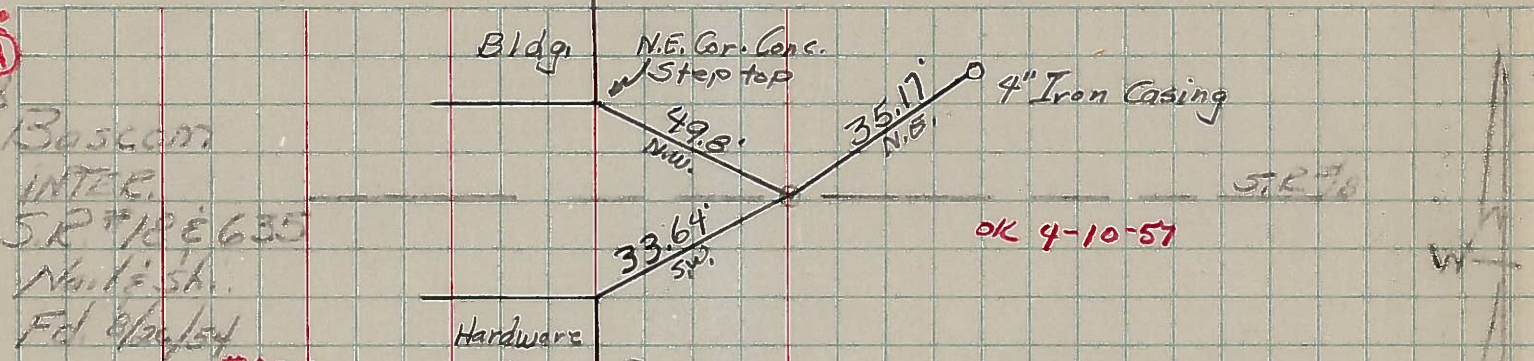
S. R. #635 WEATHER

SEC. TEMP.

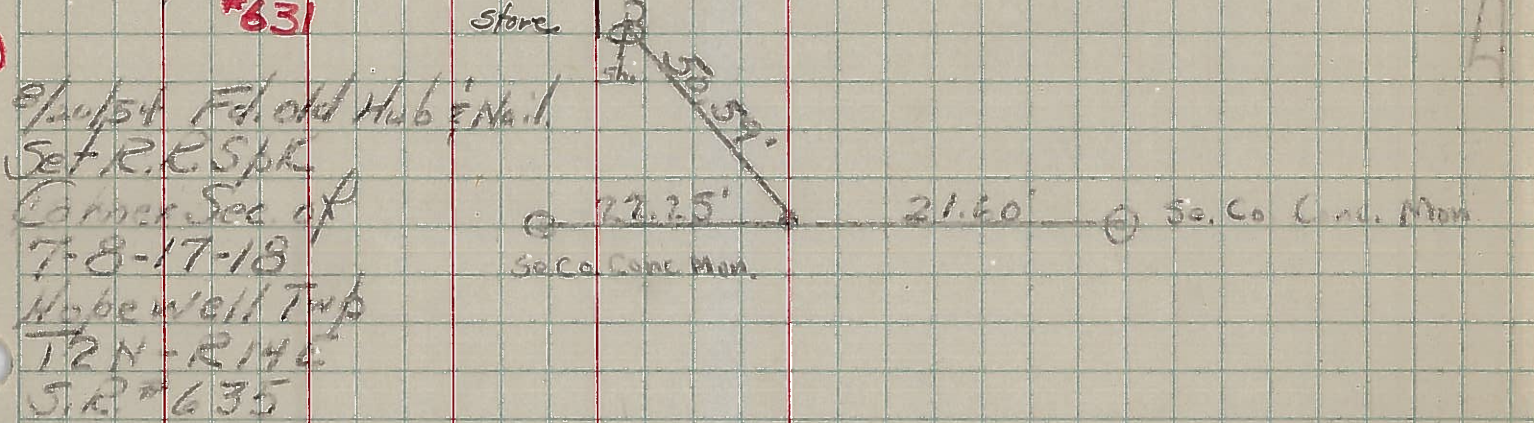
DESCRIPTION 1 From S.R. #18 Mon SE #635 JOB NO.

LEFT CENTER LINE RIGHT

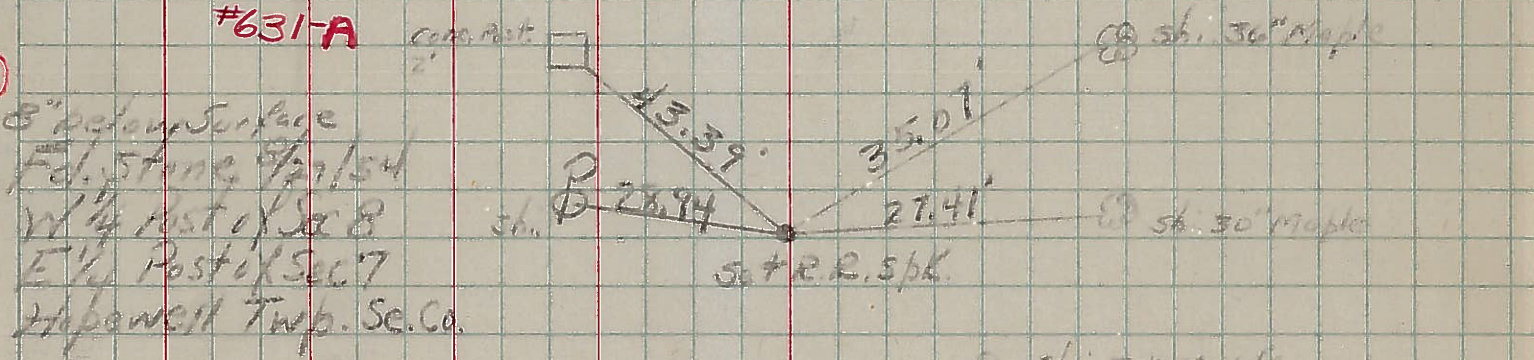
1-A



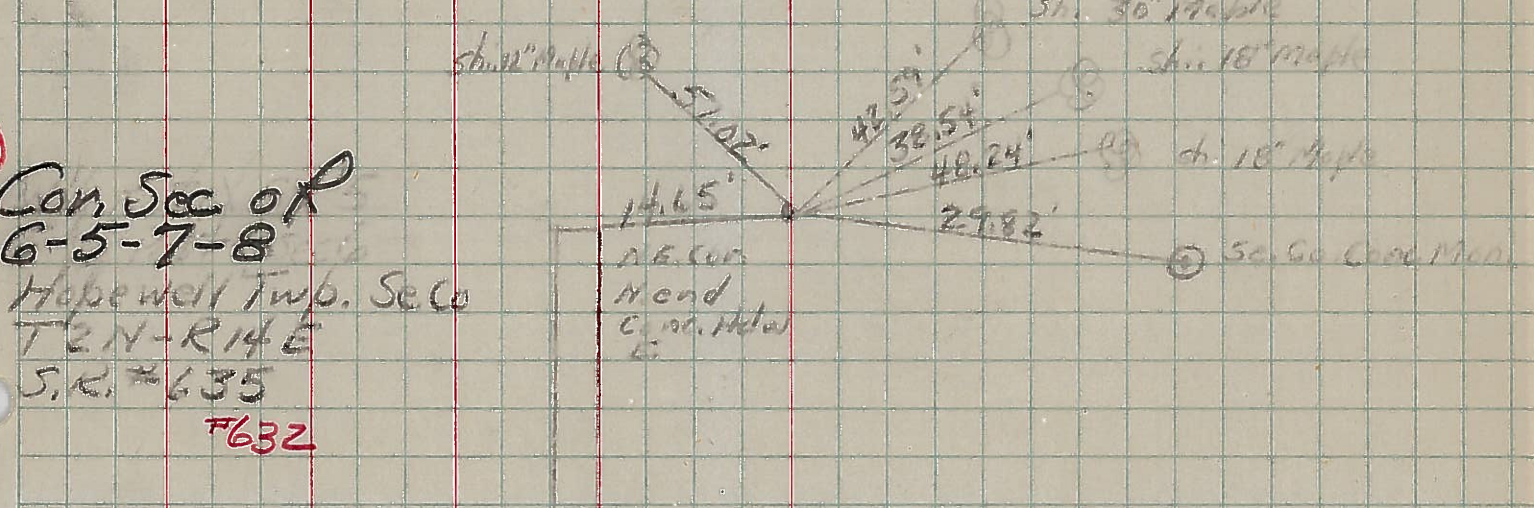
2



3



4



Bascom INTER. S.R. #18 E 635 N. 1/2 sh. Fd 8/21/54 #631

8/21/54 Fd. old Hub & Nail. Set R.R. Spk. Corner Sec of 7-8-17-18 Hopewell Twp T2N-R14E S.R. #635 #631-A

8" below surface Fd. Stone 8/21/54 W 1/4 Post of Sec 8 E 1/4 Post of Sec 7 Hopewell Twp. Se. Co.

Con. Sec of 6-5-7-8 Hopewell Twp. Se. Co. T2N-R14E S.R. #635 #632