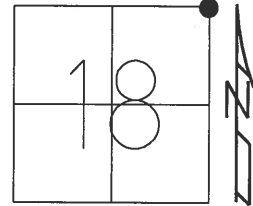


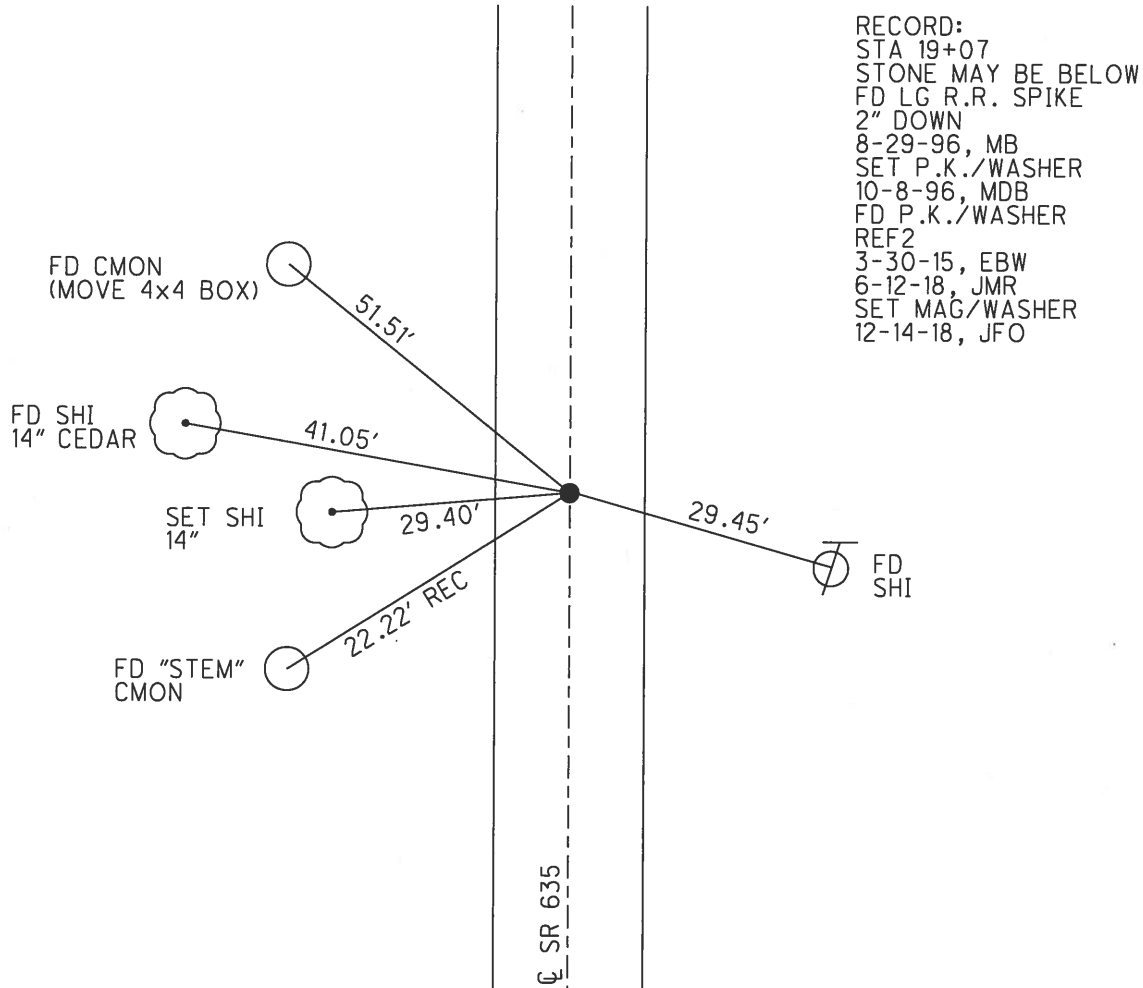
O.D.O.T. DISTRICT 2 SURVEY OFFICE (USE ONLY)

PERSONNEL _____ REFERENCE NO. 2 SHEET 1 OF 9
 NOTES TRENKA DATE 6-12-18 ROUTE SR 635
 H.C. RHOADES WEATHER CLOUDY COUNTY SENECA
 R.C. TRENKA TEMP. 70°F TOWNSHIP HOPEWELL
 DWG BY JAMES PID 92128 SECTION 18
 T 2 N R 14 E

TYPE MONUMENT P.K./WASHER
~~ON SURFACE~~ - BELOW 2"
 OFFSET 4.3' LT : ~~RT~~
5.7' TO LT EDGE PAVEMENT
 STATION: 19+23.06



HORZ. DATUM: NAD83 2011 GEOID: NAVD88 2012A
 GRID: NORTHING: 537041.627 EASTING: 1752218.475



RECORD:
 STA 19+07
 STONE MAY BE BELOW
 FD LG R.R. SPIKE
 2" DOWN
 8-29-96, MB
 SET P.K./WASHER
 10-8-96, MDB
 FD P.K./WASHER
 REF2
 3-30-15, EBW
 6-12-18, JMR
 SET MAG/WASHER
 12-14-18, JFO

O.D.O.T. DISTRICT 2 SURVEY OFFICE

PERSONNEL

REFERENCE NO. 2

SHEET 1 OF 11

NOTES BARNHISEL

H.C. CORDES III

R.C. CANTERBURY

Rousos

DATE 8-29-96

WEATHER SUNNY

TEMP. +80°

ROUTE S.R. 635

COUNTY SENECA

TOWNSHIP HOPEWELL

SECTION 18

T 2 NR 14 E

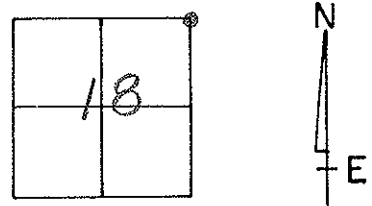
TYPE MONUMENT Lg RR SPK

ON SURFACE - BELOW 2"

LEFT- & PAV'T. - RIGHT 4.3'

5.7' TO LT EDGE PAVEMENT

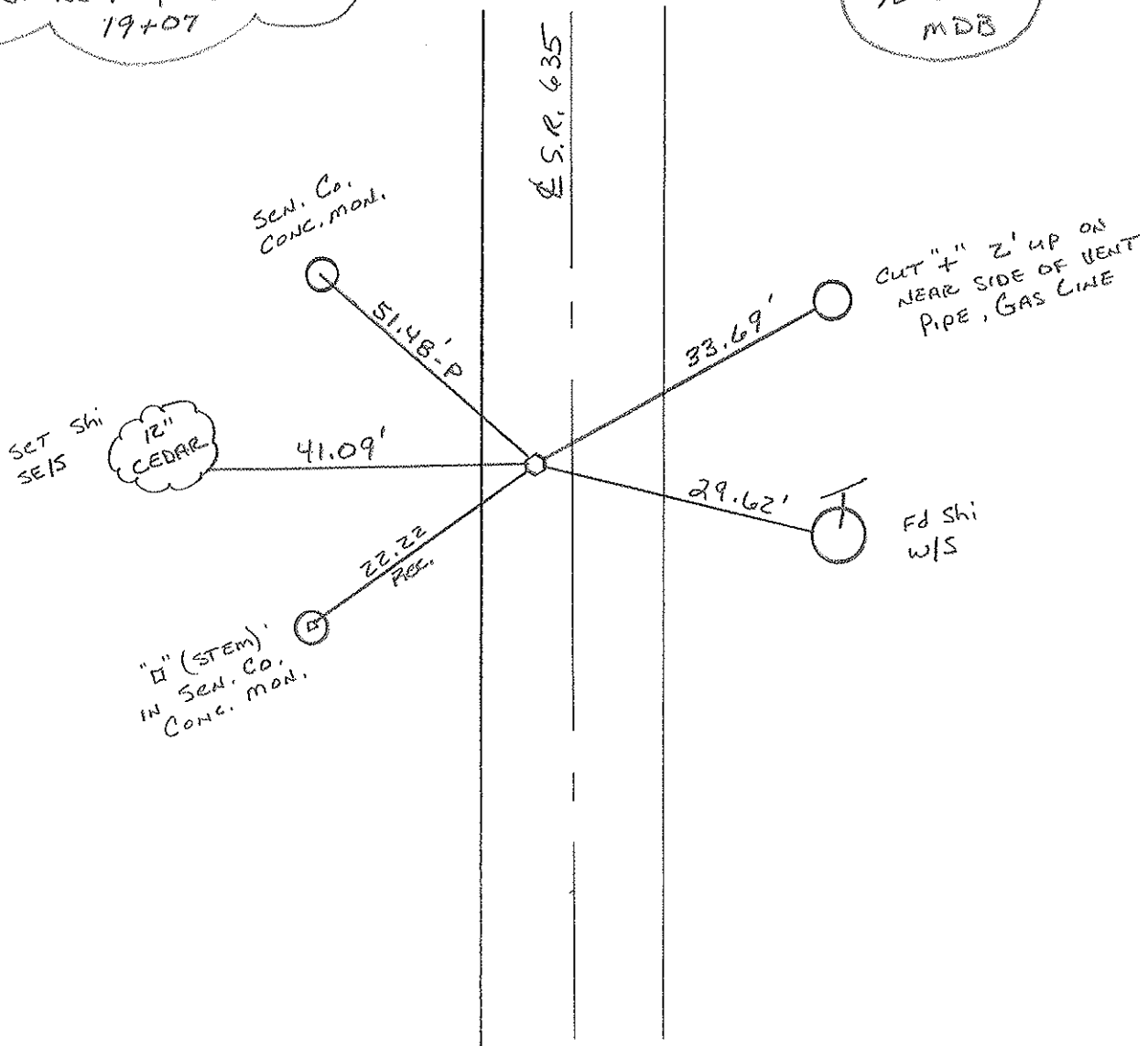
S.L.M. 19+31



RECORD:

STONE MAY BE BELOW
19+07

Reset PK & WASHER
10-8-96
MDS



Resurfaced 1996

O.D.O.T. DISTRICT 2 SURVEY OFFICE

PERSONNEL

NOTES Cronin

H.C. Ripple

R.C. _____

REFERENCE NO. 2

DRAWN 6/23/86

DATE 6/20/86

WEATHER overcast

TEMP. 68°

SHEET 2 OF 15

ROUTE #635

COUNTY Seneca

TOWNSHIP Hopewell

SECTION 7, 8, 17, & 18

T 2 N R 14 E

TYPE MONUMENT R.R. spike at top R.R. spike

ON SURFACE - BELOW 1 7/8" below

LEFT- & PAV'T. - RIGHT 4' Lt. & P.v.T.

TO _____ EDGE PAVEMENT

S.L.M. 0.361

7	8
18	17



S.R. #635

Sen. Co. conc. mon.



51.48

22.22
Plumb
□(stem) in



Sen. Co. conc. mon.

29.72



19407

Stone may be below

PERSONNEL TITLE PERSONNEL TITLE

COUNTY SENECA

DATE JUNE 1971

CROWN

S. R. # 635

WEATHER

SEC Bascom to Sand Co. Line TEMP.

DESCRIPTION TIES FOR CONTROL POINTS

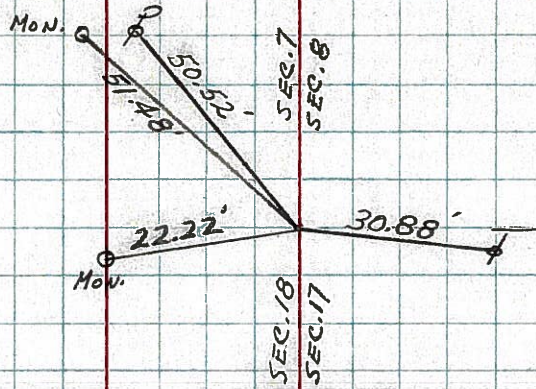
JOB NO.

LEFT

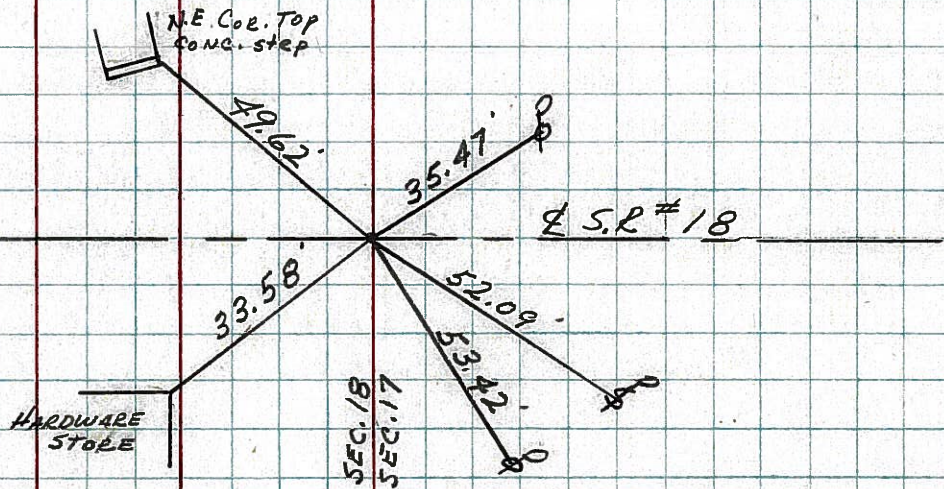
CENTER LINE

RIGHT

Sec. Corner
 Hopewell Twp
 19+07
 R.R. SPK. 4" below SURFACE
 SET SMALL SPK. ATOP
 #2



Hopewell Twp
 BASCOM
 INTERSECTION S.R. #18 E
 S.R. #635
 SET SMALL SPK. ON TOP
 0+00
 #1
 1-A



PERSONNEL	TITLE	PERSONNEL	TITLE	COUNTY	DATE
Schneider		Potts		Seneca	6-3-68
Mosser				S. R. 635	WEATHER Fair
Barbour				SEC. S.R.#18 to S.R.#12	TEMP. 65°
Redding					

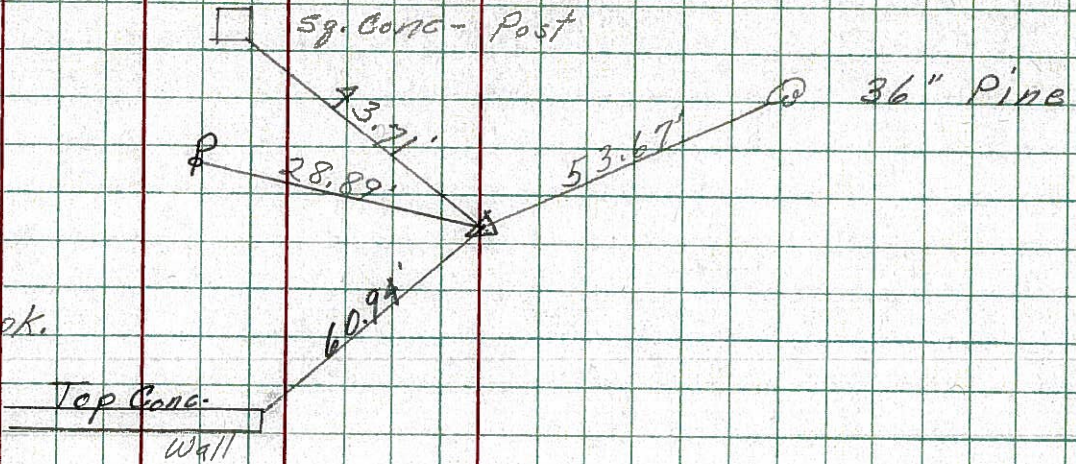
DESCRIPTION Ties for Control Points JOB NO. _____

LEFT CENTER LINE RIGHT

③

45+59
 Fd. R.R. spk.
 3" down
 Reset small spk.
 7-17-68

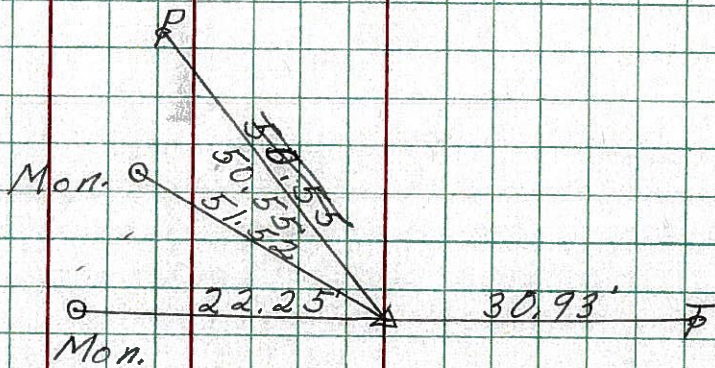
8738



②

19+07
 Fd. R.R. spk.
 3" down
 Reset small spk.
 7-17-68

8737



①-A

0+00
 Fd. spk. on top
 Bascom

8736

S.R. #18

PERSONNEL TITLE PERSONNEL TITLE

COUNTY Seneca DATE

S. R. #635

WEATHER

SEC. TEMP.

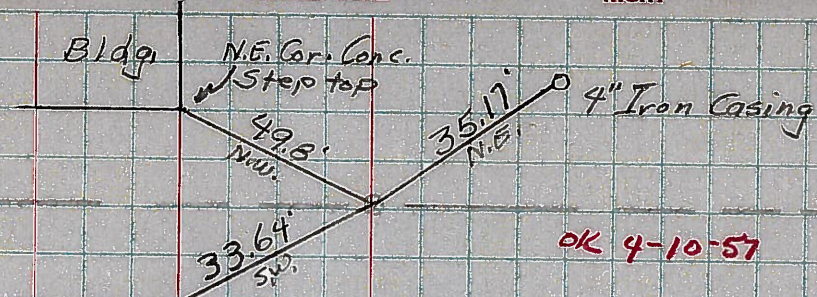
DESCRIPTION

From S.R. #18 N. on S.R. #635

LEFT CENTER LINE RIGHT

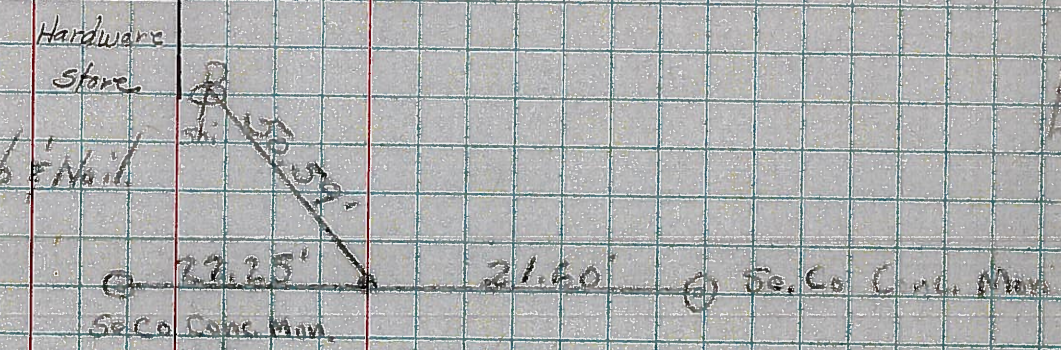
1-A

Bascom INTER. S.R. #18 E 635 Nail & sh. Fd. Bluff



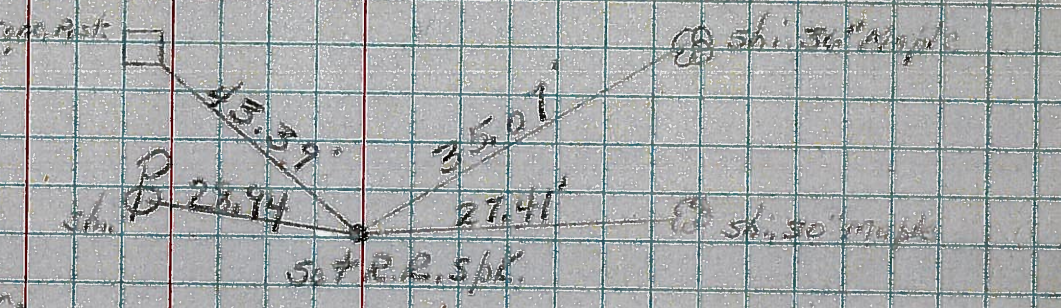
2

Bluff Fd. old Hub & Nail Set R.R. Spk Corner Sec of 7-8-17-18 Hopewell Twp 12N-R14E S.R. #635



3

8\"/>



4

Con. Sec of 6-5-7-8 Hopewell Twp. Sec. Co 12N-R14E S.R. #635

