

O.D.O.T. DISTRICT 2 SURVEY OFFICE (USE ONLY)

PERSONNEL

REFERENCE NO. 3

SHEET 2 OF 9

NOTES TRENKA

DATE 6-12-18

ROUTE SR 635

H.C. RHOADES

WEATHER CLOUDY

COUNTY SENECA

R.C. TRENKA

TEMP. 70°F

TOWNSHIP HOPEWELL

SECTION 7

DWG BY JAMES

PID 92128

T 2 N R 14 E

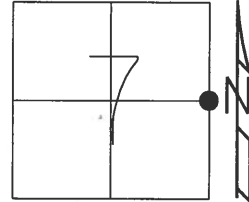
TYPE MONUMENT SM R.R. SPIKE

~~ON SURFACE~~ - BELOW 2"

OFFSET CL PAVEMENT 5.3' LT : ~~RT~~

4.9' TO LT EDGE PAVEMENT

STATION: 45+75.88



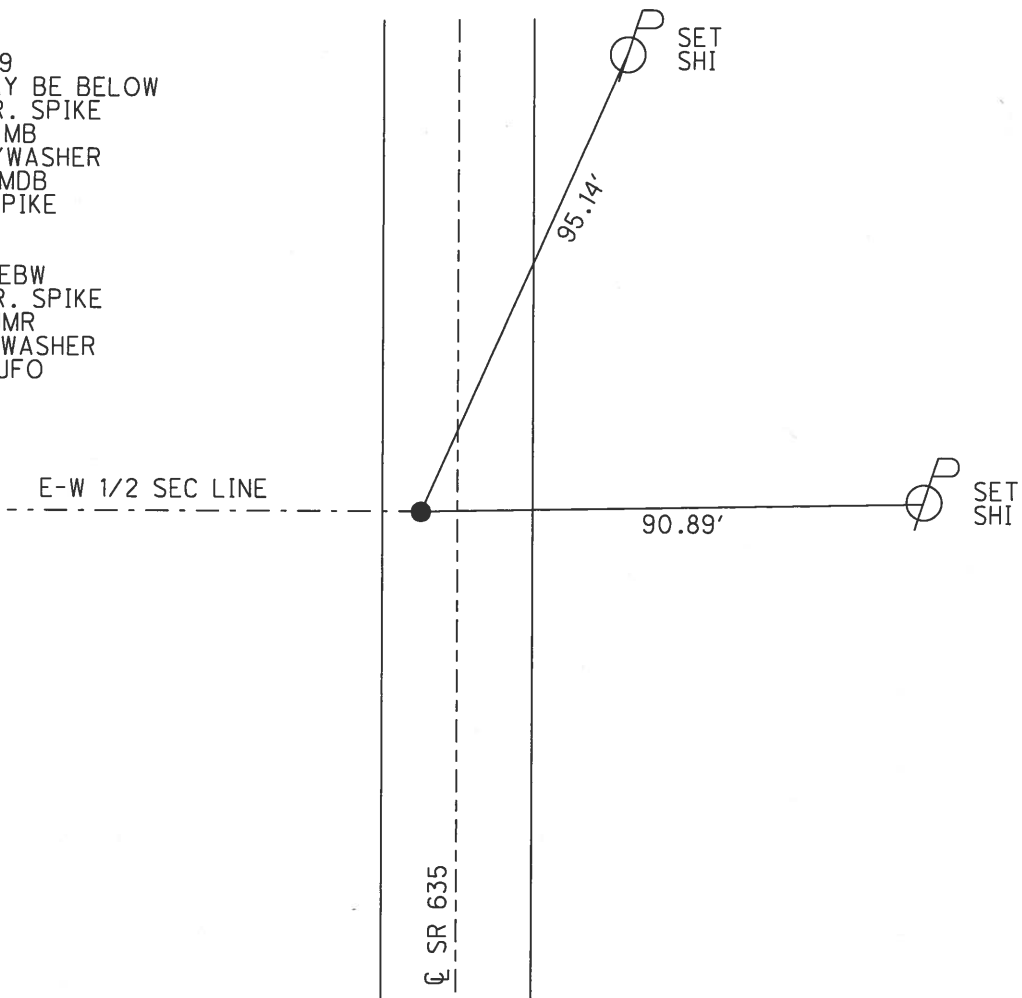
HORZ. DATUM: NAD83 2011

GEOID: NAVD88 2012A

GRID: NORTHING: 539693.969

EASTING: 1752269.151

RECORD:
STA 45+59
STONE MAY BE BELOW
FD LG R.R. SPIKE
8-29-96, MB
SET P.K./WASHER
10-8-96, MDB
FD R.R. SPIKE
2" DOWN
REF3
3-30-15, EBW
FD SM R.R. SPIKE
6-12-18, JMR
SET MAG/WASHER
12-14-18, JFO



O.D.O.T. DISTRICT 2 SURVEY OFFICE

PERSONNEL

REFERENCE NO. 3

SHEET 2 OF 11

NOTES BARNHISEL

H.C. CORDES M.

DATE 8-29-96

ROUTE S.R. 635

R.C. CANTERBURY

WEATHER SUNNY

COUNTY SENECA

ROUSOS

TEMP. +80°

TOWNSHIP HOPEWELL

SECTION 7

T2 N R 14 E

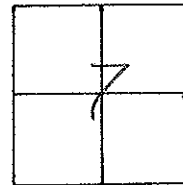
TYPE MONUMENT Lg RR Spk

ON SURFACE - BELOW 2"

LEFT- & PAV'T. - ~~RIGHT~~ 5.3'

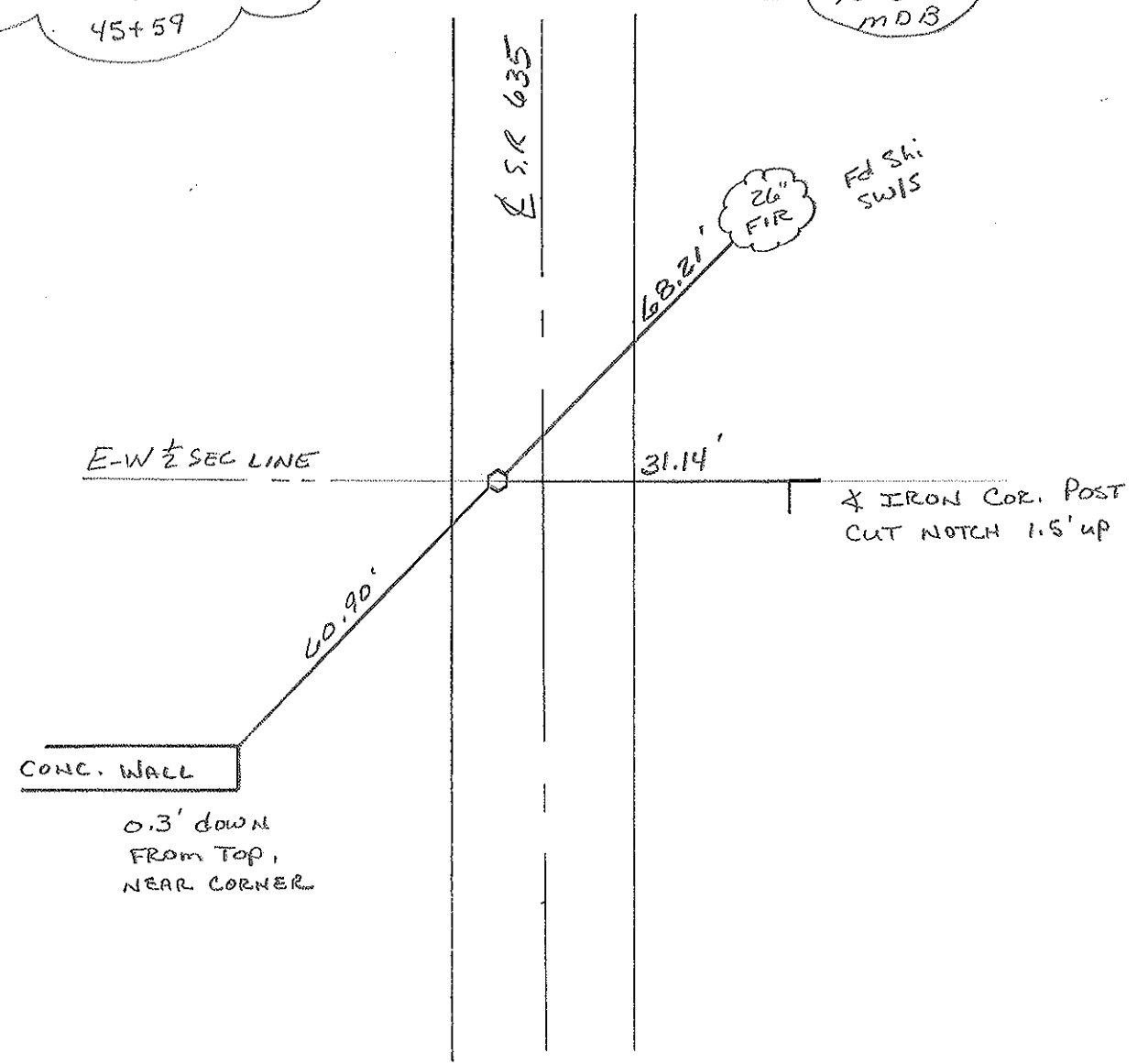
4.9' TO LT EDGE PAVEMENT

S.L.M. 45+88



RECORD:
STONE MAY BE BELOW
45+59

RESET PK & WASHER
10-8-96
MDB



O.D.O.T. DISTRICT 2 SURVEY OFFICE

PERSONNEL

REFERENCE NO. 3

SHEET 3 OF 15

NOTES Cronin

DRAWN 6/23/86

H.C. Ripple

DATE 6/20/86

R.C. _____

WEATHER sunny

TEMP. 73°

ROUTE #635

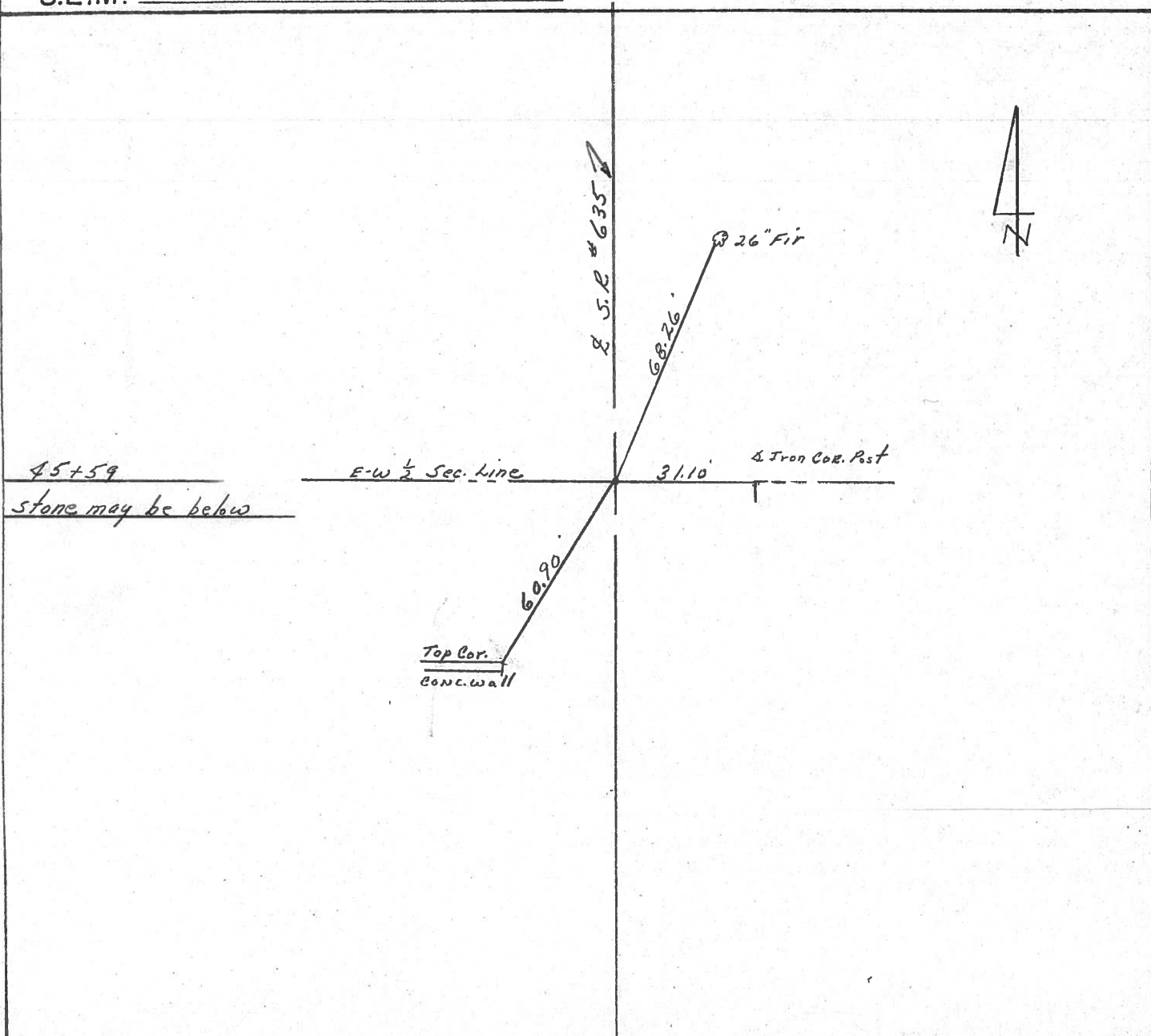
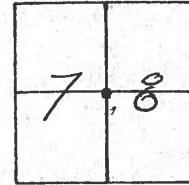
COUNTY Seneca

TOWNSHIP Hopewell

SECTION 7 & 8

T2 N R 14 E

TYPE MONUMENT R.R. spike atop L.R. spike
 ON SURFACE - BELOW 1 1/4" below
 LEFT- & PAV'T. - RIGHT 9.9' Lt. & Rvt.
 TO EDGE PAVEMENT
 S.L.M. 0.863



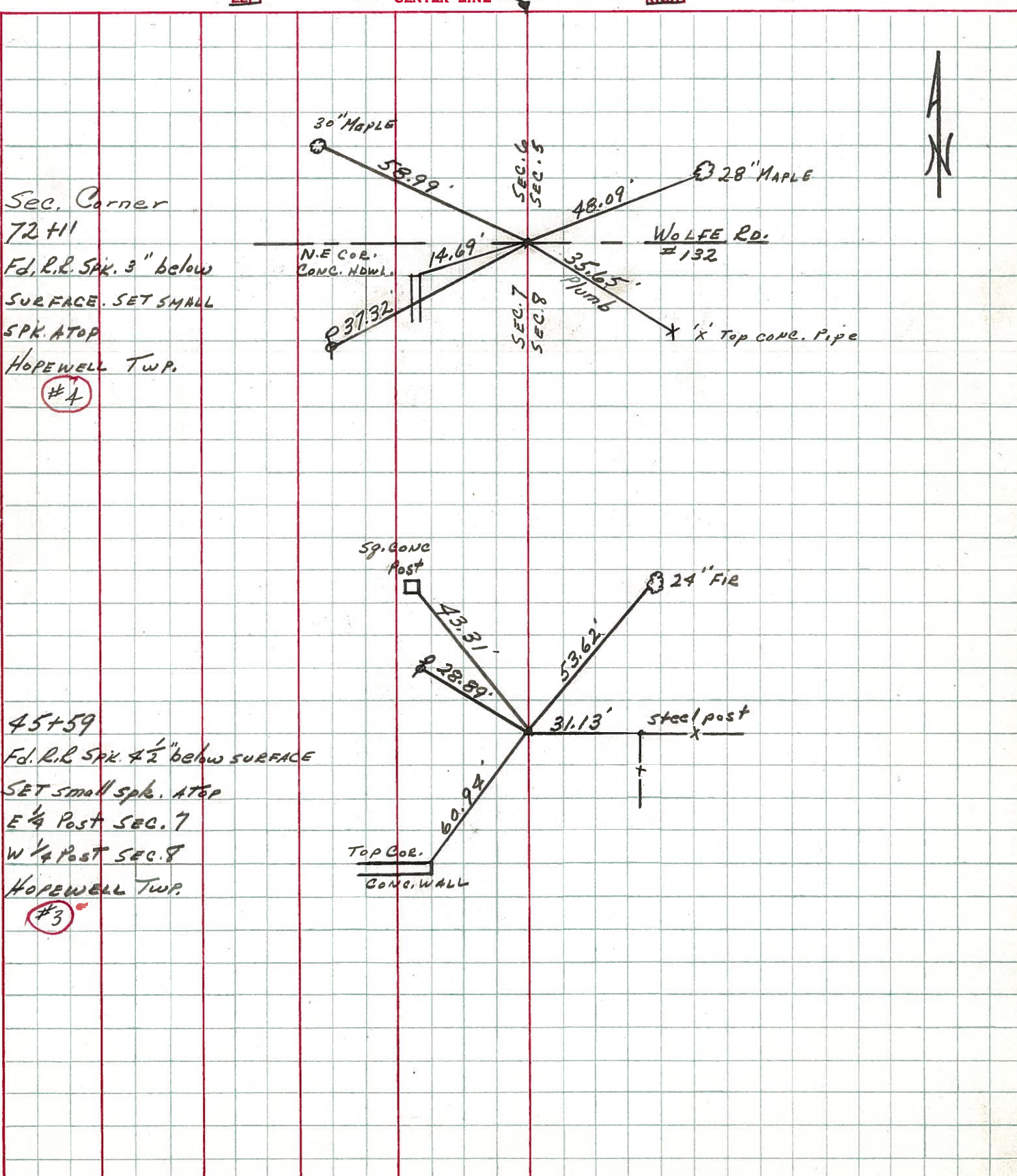
PERSONNEL TITLE PERSONNEL TITLE
CRONIN

COUNTY SENCA DATE JUNE 1971

S. R. #635 WEATHER

SEC. TEMP.

DESCRIPTION TIES FOR CONTROL POINTS JOB NO.



PERSONNEL TITLE PERSONNEL TITLE

Schneider

Potts

COUNTY Seneca

DATE 6-3-68

Mosser

S. R. 635

WEATHER Fair

Barbour

SEC. S.R.#18 to S.R.#12

TEMP 65°

Redding

DESCRIPTION Ties for Control Points

JOB NO.

LEFT

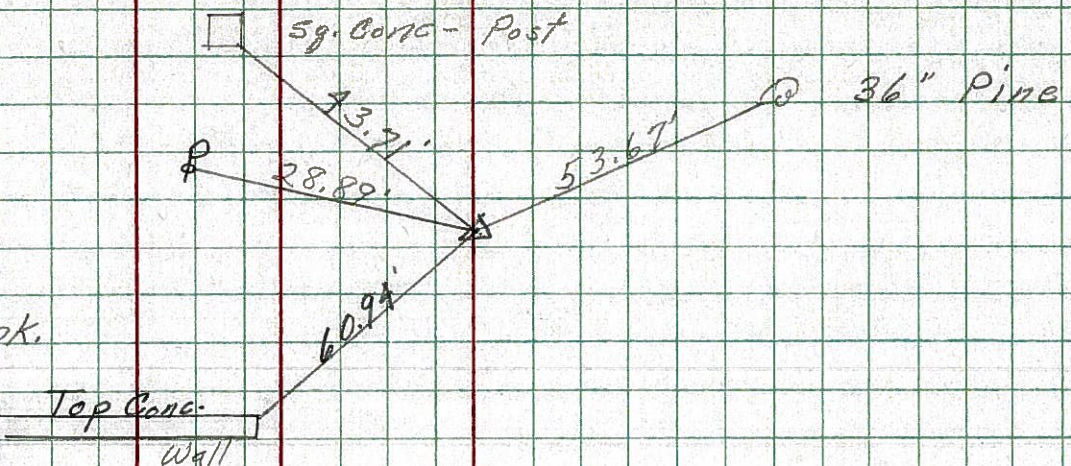
CENTER LINE

RIGHT

3

45+59
Fd. R.R. spk.
3" down
Reset small spk.
7-17-68

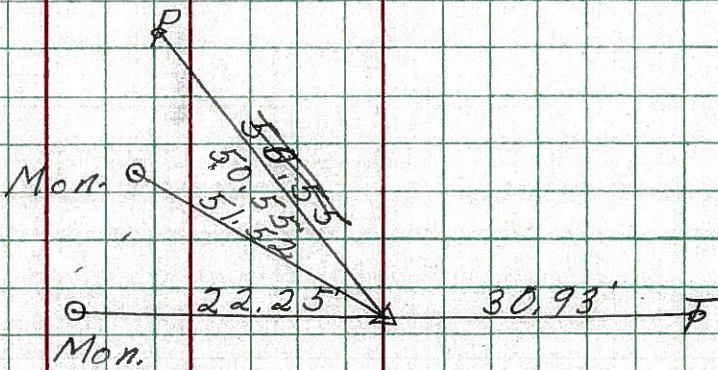
8738



2

19+07
Fd. R.R. spk.
3" down
Reset small spk.
7-17-68

8737



1-A

0+00
Fd. spk. on top
Bascom

8736



PERSONNEL TITLE PERSONNEL TITLE

COUNTY Seneca DATE

S. R. #635 WEATHER

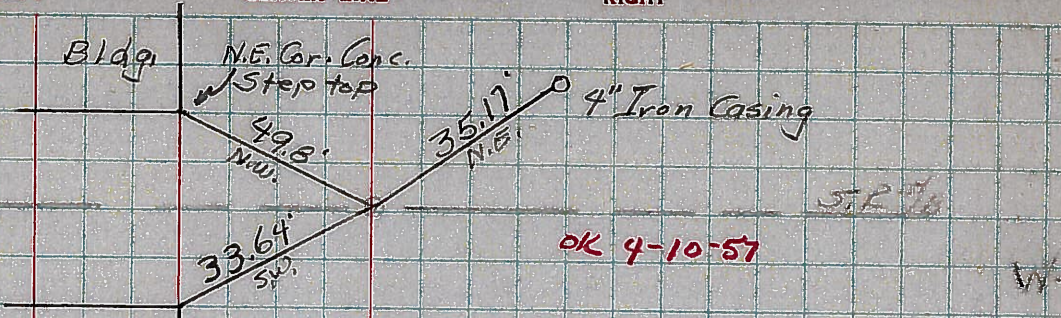
SEC. From S.E. #18 N. on S.E. #635 TEMP. JOB NO.

DESCRIPTION

LEFT CENTER LINE RIGHT

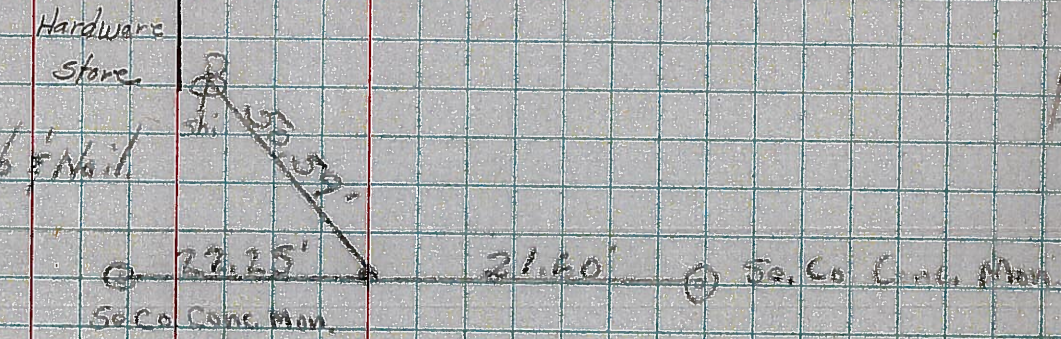
1-A
28

Bascom INTER.
S.R. #635
Nail's sh.
Fd. Bluff



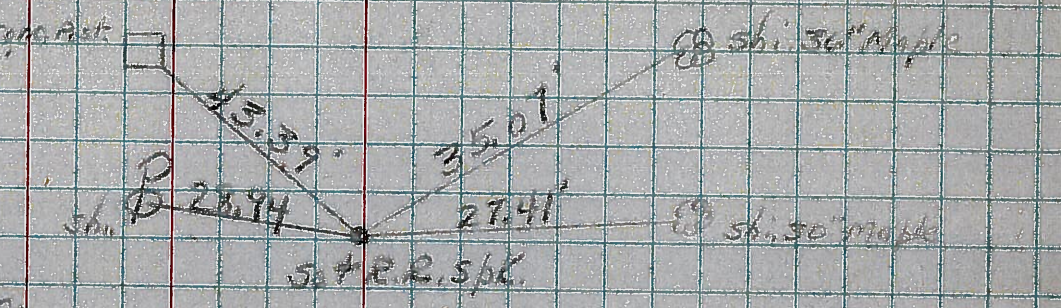
2

8' below Fd. old Hub & Nail
Set R.R. Spk
Corner Sec of
7-8-17-18
Hopewell Twp
T2N-R14E
S.R. #635



3

8' below Surface
Fd. Stone Bluff
W. of Post of Sec 8
E. of Post of Sec 17
Hopewell Twp. Se. Co.



4

Con. Sec of
6-5-7-8
Hopewell Twp. Se. Co
T2N-R14E
S.R. #635
#632

