

O.D.O.T. DISTRICT 2 SURVEY OFFICE

PERSONNEL

REFERENCE NO. 9 SHEET 9 OF 11

NOTES BARNHISEL

H.C. CORDS

R.C. CANTERBURY

ROUSOS

DATE 8-29-96

WEATHER SUNNY

TEMP. +80°

ROUTE 635

COUNTY Seneca

TOWNSHIP LIBERTY

SECTION 19

T 3 N R 14 E

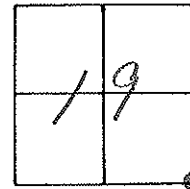
TYPE MONUMENT Lg RR Spk

SURFACE - BELOW 2"

- CL PAV'T. - RIGHT 0.9

8.9 TO RT EDGE PAVEMENT

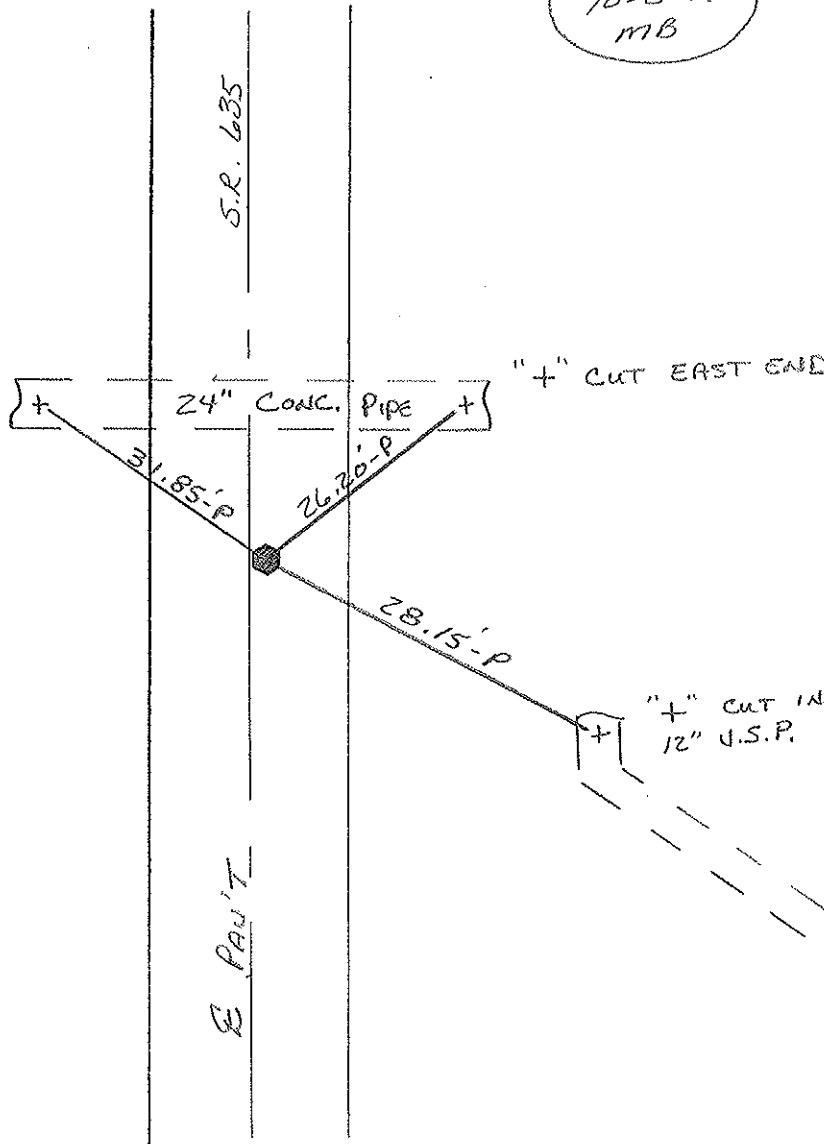
S.L.M. 230+06



RECORD: 229+48±
RR a top RR SPK
4 1/2" below SURFACE
STONE maybe below

RESET PR & WASHER
10-8-96
MB

"+" CUT WEST END



"+" CUT EAST END

"+" CUT IN
12" U.S.P.

O.D.O.T. DISTRICT 2 SURVEY OFFICE

PERSONNEL

REFERENCE NO. 9

SHEET 9 OF 15

NOTES Cronin

DRAWN 6/24/86

H.C. Ripple

DATE 6/18/86

R.C. Geyman

WEATHER sunny

TEMP. 75°

ROUTE #635

COUNTY Seneca

TOWNSHIP Liberty

SECTION 19, 20, 29 & 30

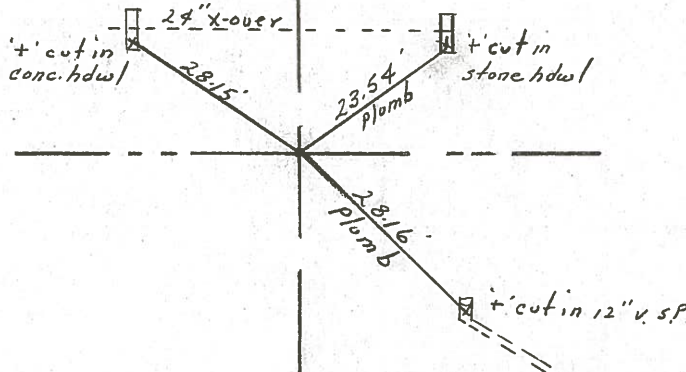
T3 N R 14 E

TYPE MONUMENT sq. spike & washer
 ON SURFACE - BELOW on surface
 LEFT- & PAV'T. - RIGHT l.r.t. & P.V.T.
 TO EDGE PAVEMENT
 S.L.M. 4.3462 t

19	20
30	29



S.R.#635



229+48 t
R.R. spike a top RR spike
4 1/2" below surface
stone should be below

PERSONNEL TITLE PERSONNEL TITLE

CRONIN

COUNTY SENECA

DATE July 1971

S. R. #635

WEATHER

SEC.

TEMP.

DESCRIPTION TIES FOR CONTROL POINTS

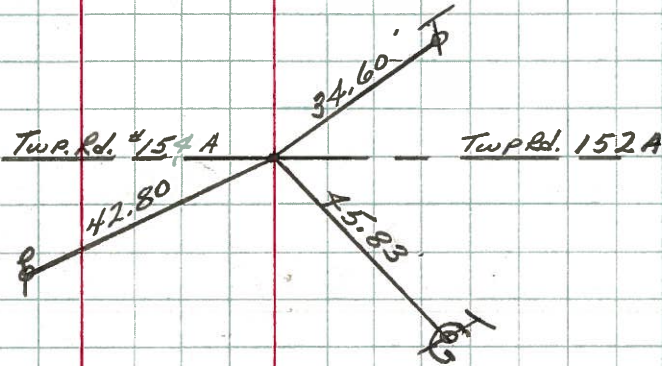
JOB NO.

LEFT

CENTER LINE

RIGHT

SET SMALL SPK. ATOP
 256+22
 Fd. HARROW Tooth
 3" below SURFACE
 E 1/4 Post SEC. 19
 W 1/4 Post SEC. 20
 #10



Sec. Corner
 Fd. R.R. SPK. 3 1/2' below
 SURFACE - SET SMALL
 SPK. ATOP.
 STONE SHOULD BE BELOW
 LIBERTY TWP
 #9

