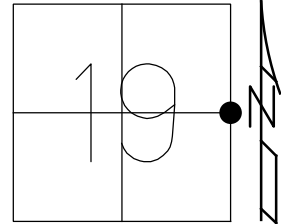


O.D.O.T. DISTRICT 2 SURVEY OFFICE (USE ONLY)

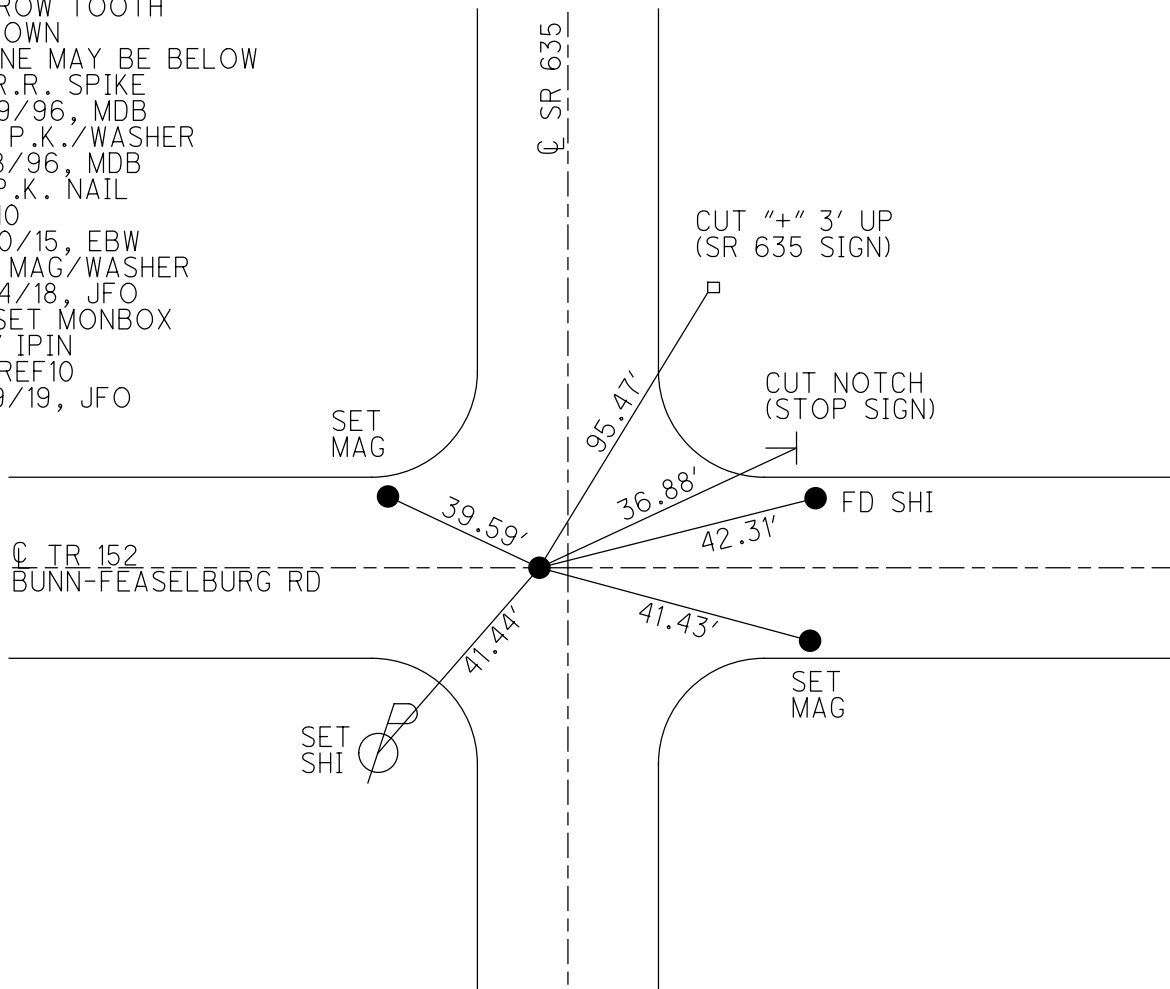
PERSONNEL _____ REFERENCE NO. 10 SHEET 10 OF 10
 NOTES TRENKA DATE 6/13/18 ROUTE SR 635
 H.C. RHOADES WEATHER CLOUDY COUNTY SENECA
 R.C. TRENKA TEMP. 73°F TOWNSHIP LIBERTY
 _____ SECTION 19
 DWG BY NASON PID 92128 T 3 N R 14 E

TYPE MONUMENT P.K. NAIL
 ON SURFACE - ~~BELOW~~ ON _____
 OFFSET \odot PAVEMENT 1.5' ~~LT~~ : RT
8.4' TO LT EDGE PAVEMENT
 STATION: 257+01.08



HORIZ. DATUM: NAD83 2011 GEOID: NAVD88 2012A
 GRID: NORTHING: 560738.388 EASTING: 1752684.370

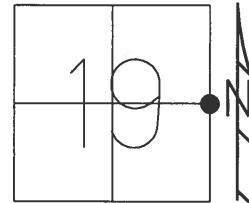
RECORD:
 STA. 256+22
 HARROW TOOTH
 4" DOWN
 STONE MAY BE BELOW
 LG R.R. SPIKE
 8/29/96, MDB
 SET P.K./WASHER
 10/8/96, MDB
 FD P.K. NAIL
 REF10
 3/30/15, EBW
 SET MAG/WASHER
 12/14/18, JFO
 FD SET MONBOX
 W/1" IPIN
 NEWREF10
 10/9/19, JFO



O.D.O.T. DISTRICT 2 SURVEY OFFICE (USE ONLY)

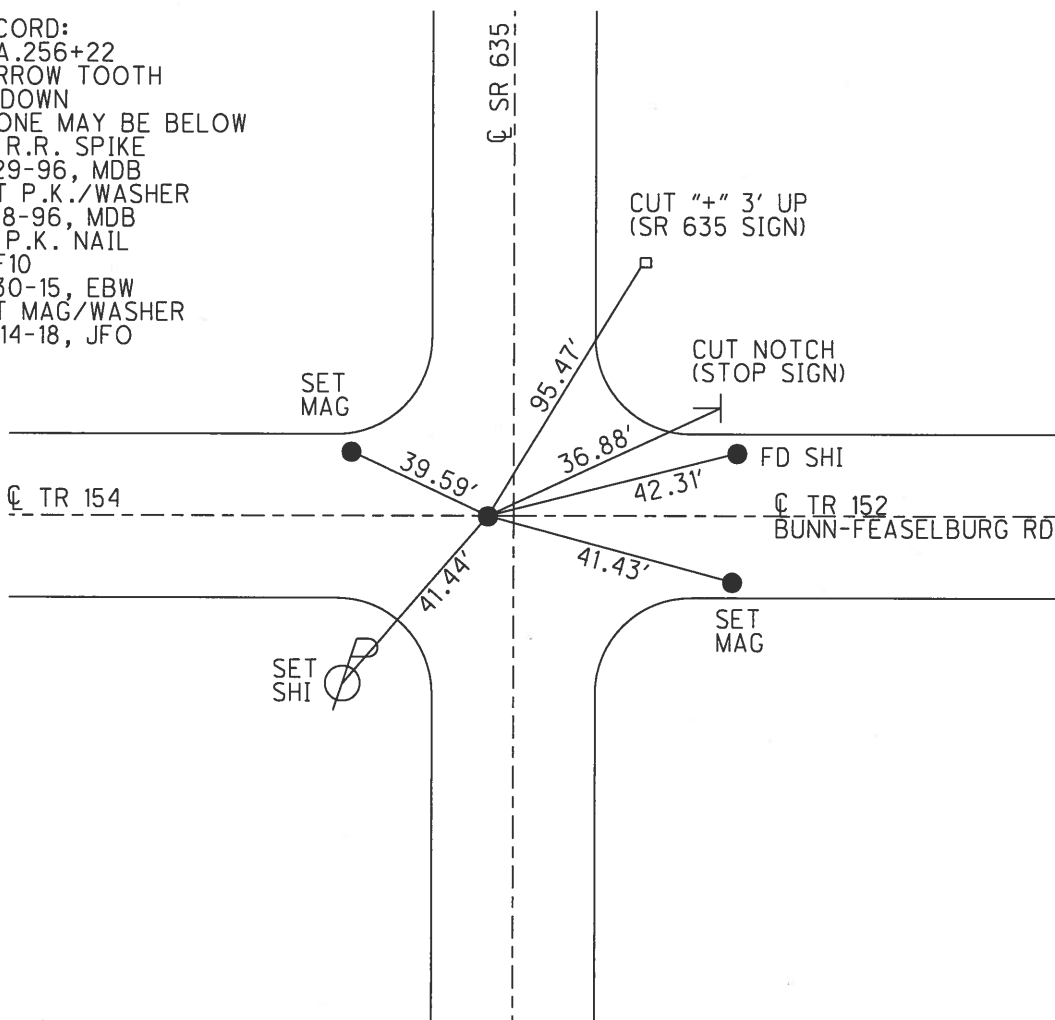
PERSONNEL _____ REFERENCE NO. 10 SHEET 9 OF 9
 NOTES TRENKA DATE 6/13/18 ROUTE SR 635
 H.C. RHOADES WEATHER CLOUDY COUNTY SENECA
 R.C. TRENKA TEMP. 73°F TOWNSHIP LIBERTY
 DWG BY MILLER PID 92128 SECTION 19
 T 3 N R 14 E

TYPE MONUMENT P.K. NAIL
 ON SURFACE - ~~BELOW~~ ON _____
 OFFSET C PAVEMENT 1.5' ~~LT~~ : RT
8.4' TO LT EDGE PAVEMENT
 STATION: 256+29.90



HORIZ.DATUM: NAD83 2011 GEOID: NAVD88 2012A
 GRID: NORTHING: 560738.455 EASTING: 1752684.388

RECORD:
 STA.256+22
 HARROW TOOTH
 4" DOWN
 STONE MAY BE BELOW
 LG R.R. SPIKE
 8-29-96, MDB
 SET P.K./WASHER
 10-8-96, MDB
 FD P.K. NAIL
 REF10
 3-30-15, EBW
 SET MAG/WASHER
 12-14-18, JFO



O.D.O.T. DISTRICT 2 SURVEY OFFICE

PERSONNEL

REFERENCE NO. 10

SHEET 9 OF 11

NOTES BARNHISEL

H.C. CORDES II

DATE 8-29-96

ROUTE S.R. 635

R.C. CANTERBURY

WEATHER SUNNY

COUNTY SENECA

ROUSOS

TEMP. +80°

TOWNSHIP LIBERTY

SECTION 19

T.3 NR 14 E

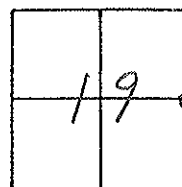
TYPE MONUMENT Lg RR Spk

ON SURFACE - BELOW 2"

LEFT- & PART - RIGHT 1.6'

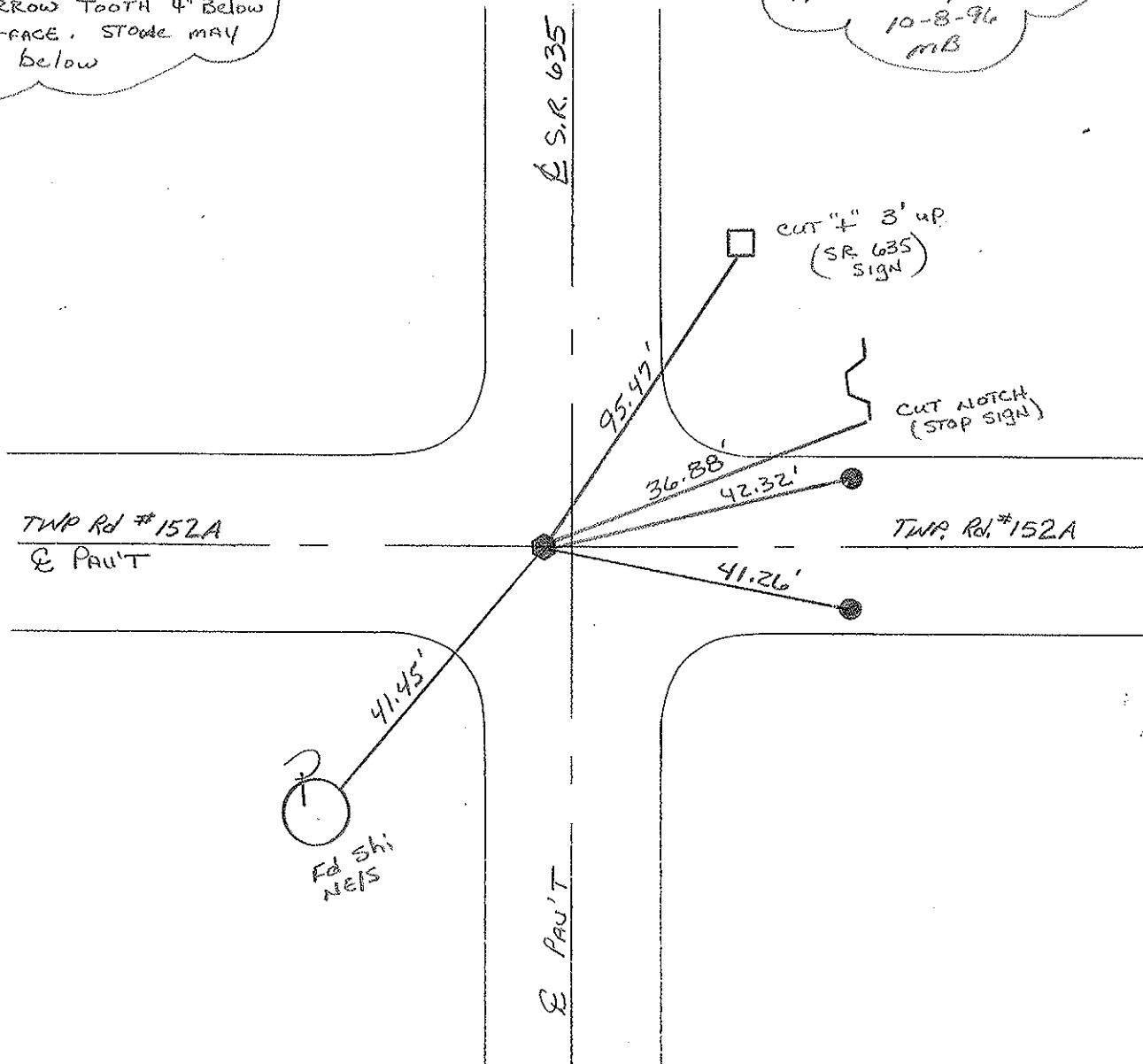
8.4 TO LT EDGE PAVEMENT

S.L.M. 256+66



Record: 256+22
HARROW TOOTH 4" Below
SURFACE. STAKE MAY
be below

RESET PK & WASHER
10-8-96
MB



O.D.O.T. DISTRICT 2 SURVEY OFFICE

PERSONNEL

REFERENCE NO. 10

SHEET 10 OF 15

NOTES Cronin

Drawn 6/25/86

H.C. Ripple

DATE 6/18/86

R.C. Geyman

WEATHER sunny

TEMP. 75°

ROUTE # 635

COUNTY Seneca

TOWNSHIP Liberty

SECTION 19E20

T3 N R14 E

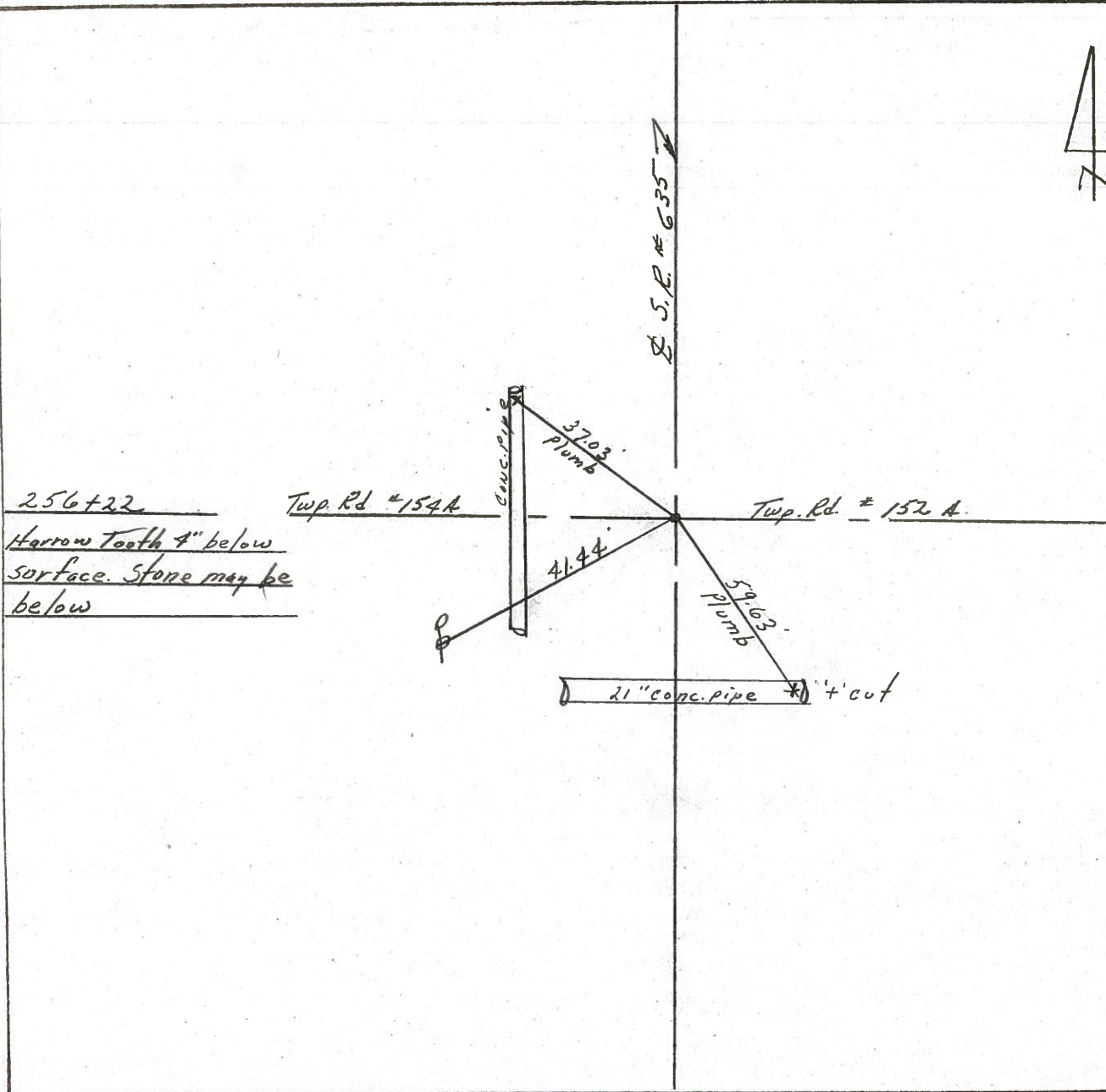
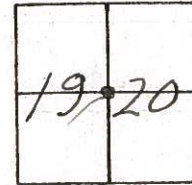
TYPE MONUMENT R.R. spike

ON SURFACE - BELOW 1 1/2" below

LEFT - & PAV'T. - RIGHT & P.V.T.?

TO EDGE PAVEMENT

S.L.M. 4.8527 ±



PERSONNEL TITLE PERSONNEL TITLE

CRONIN

COUNTY SENECA

DATE July 1971

S. R. #635

WEATHER

SEC.

TEMP.

DESCRIPTION TIES FOR CONTROL POINTS

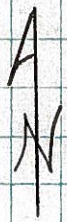
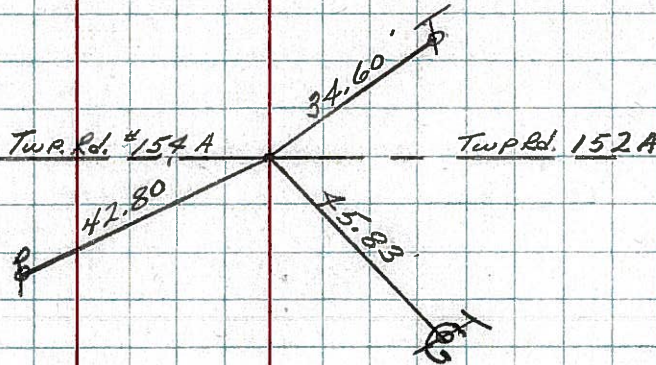
JOB NO.

LEFT

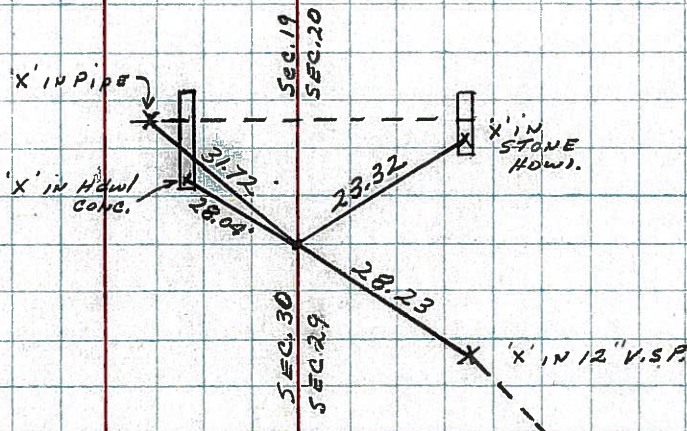
CENTER LINE

RIGHT

SET SMALL SPK. ATOP
 256+22
 Fd. HARLOW TOOTH
 3" below SURFACE
 E 1/4 Post SEC. 19
 W 1/4 Post SEC. 20
 #10



Sec. Corner
 Fd. R.R. SPK. 3 1/2" below
 SURFACE - SET SMALL
 SPK. ATOP
 STONE SHOULD BE BELOW
 LIBERTY TWP.
 #9



PERSONNEL TITLE PERSONNEL TITLE
 Mosser _____
 BARBOUR _____
 Redding _____
 Potts _____

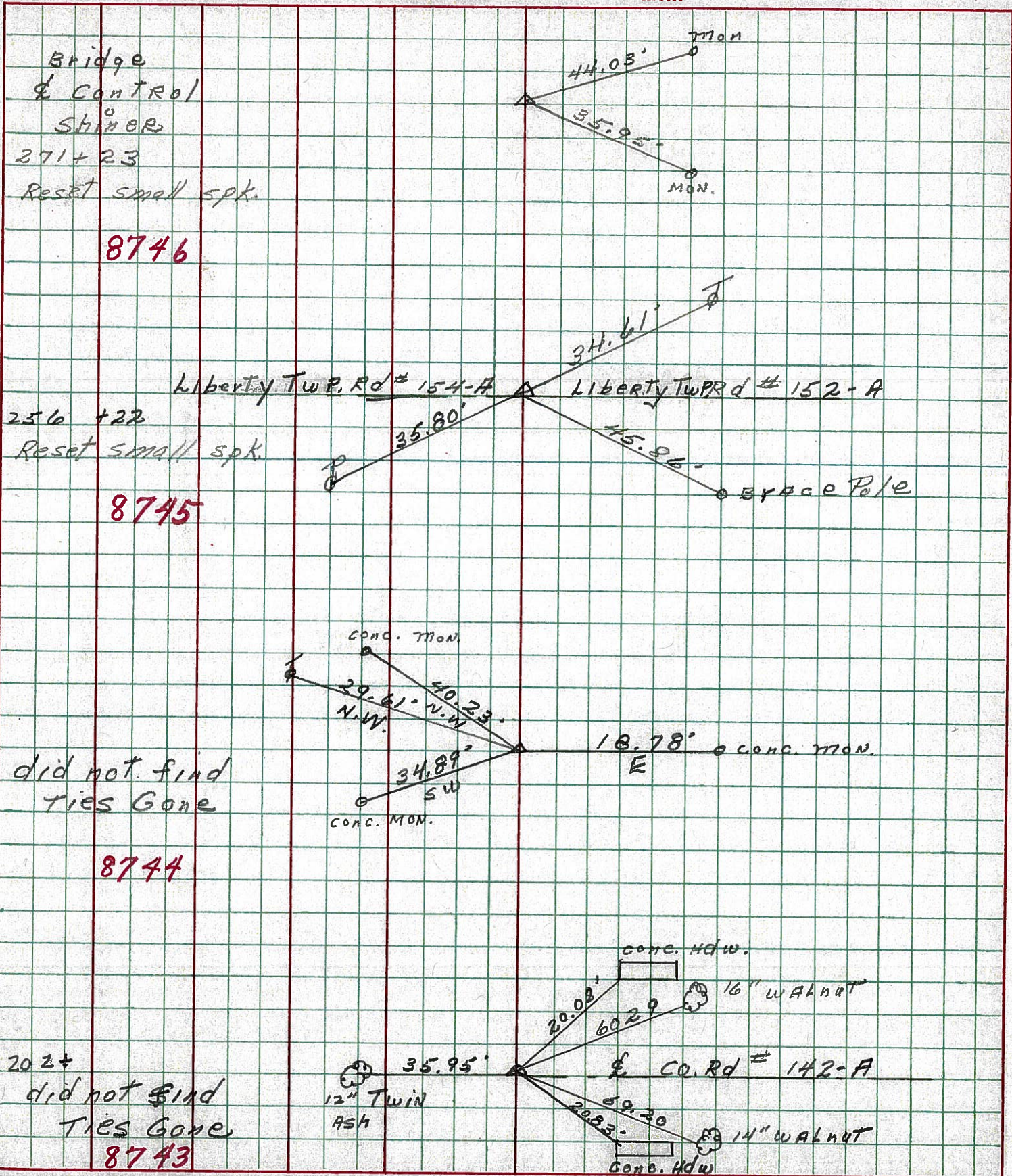
COUNTY Seneca DATE 7-17-68
6-3-68

S. R. 635 WEATHER FAIR

SEC. SR. # 18 To S.R. # 12 TEMP. 65°

DESCRIPTION Ties for Control Points JOB NO. _____

LEFT CENTER LINE RIGHT



10

8