

O.D.O.T. DISTRICT 2 SURVEY OFFICE (USE ONLY)

PERSONNEL

REFERENCE NO. 11

SHEET 1 OF 8

NOTES TRENKA DATE 6/13/18
 H.C. RHOADES WEATHER CLOUDY
 R.C. TRENKA TEMP. 74°F

ROUTE SR 635
 COUNTY SENECA
 TOWNSHIP LIBERTY
 SECTION 18
 T 3 N R 14 E

DWG BY NASON PID 92128

TYPE MONUMENT P.K./WASHER

ON SURFACE - ~~BELOW~~ ON

OFFSET Q PAVEMENT ON ~~LT~~ : ~~RT~~

10.3' TO LT EDGE PAVEMENT

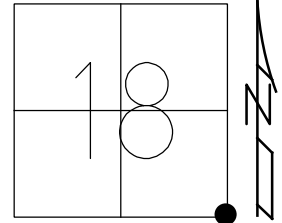
STATION: 283+56.06

HORZ.DATUM: NAD83 2011

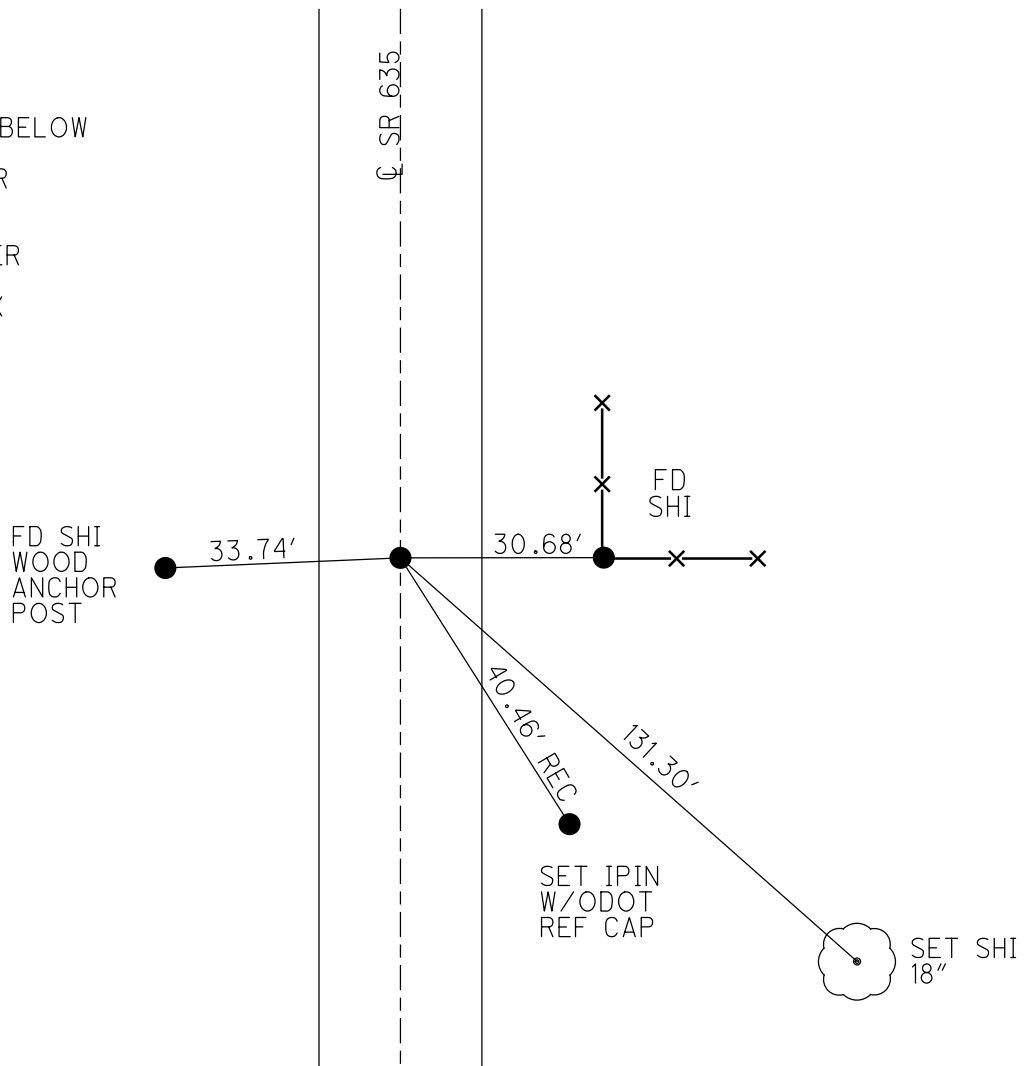
GEOID: NAVD88 2012A

GRID: NORTHING: 563393.377

EASTING: 1752683.652



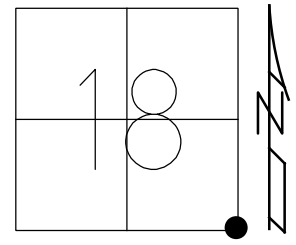
RECORD:
 FD R.R.SPIKE
 ATOP IPIN
 3" DOWN
 STONE MAY BE BELOW
 7/5/11, KPM
 FD P.K./WASHER
 REF11
 3/30/15, EBW
 SET MAG/WASHER
 12/14/18, JFO
 FD SET MONBOX
 W/1" IPIN
 NEWREF11
 10/9/19, JFO



O.D.O.T. DISTRICT 2 SURVEY OFFICE (USE ONLY)

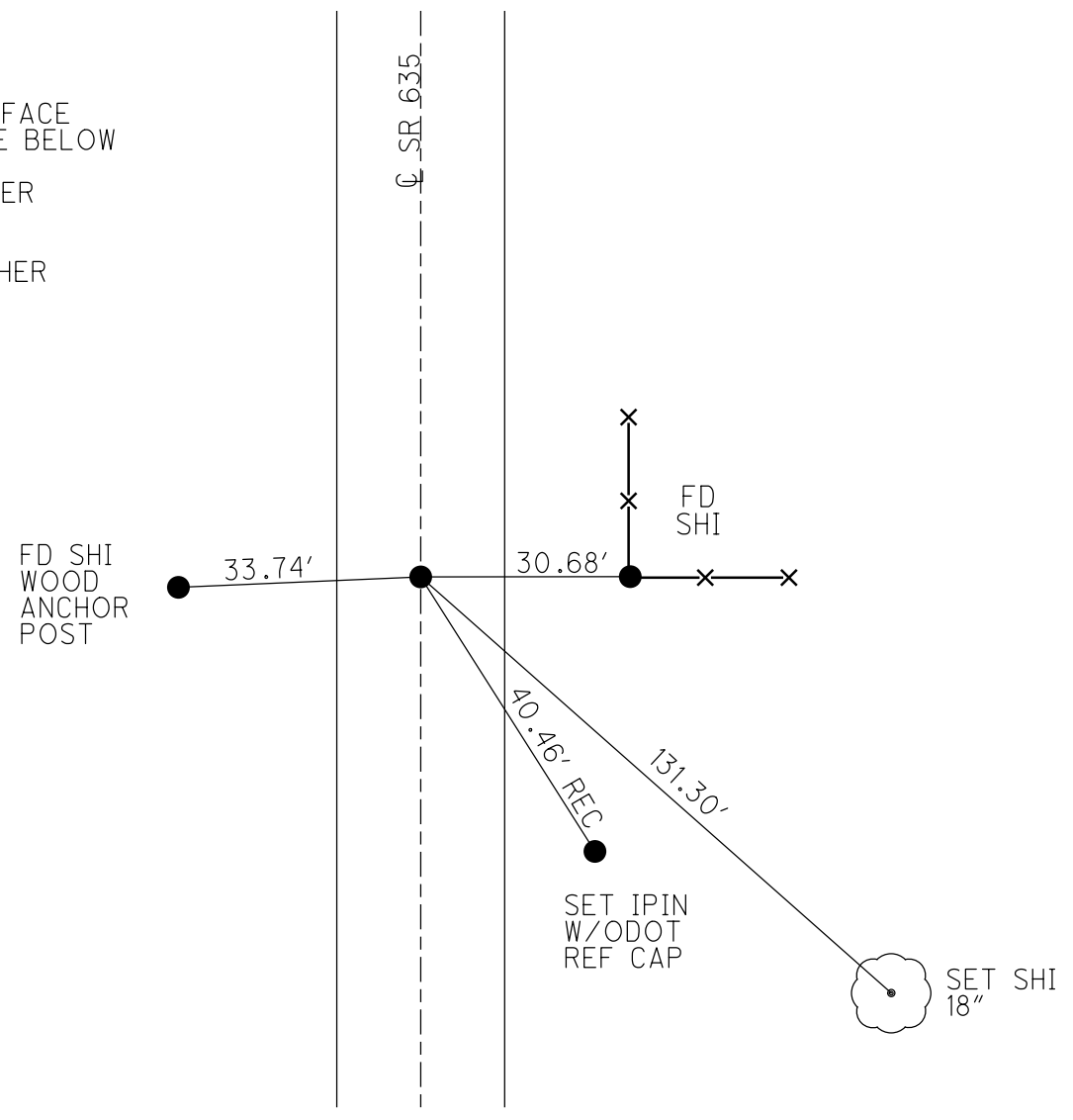
PERSONNEL _____ REFERENCE NO. 11 SHEET 1 OF 8
 NOTES TRENKA DATE 6-13-18 ROUTE SR 635
 H.C. RHOADES WEATHER CLOUDY COUNTY SENECA
 R.C. TRENKA TEMP. 74°F TOWNSHIP LIBERTY
 DWG BY JAMES PID 92128 SECTION 18
 T 3 N R 14 E

TYPE MONUMENT P.K./WASHER
 ON SURFACE - ~~BELOW~~ ON
 OFFSET \odot PAVEMENT ON LT : RT
10.3' TO LT EDGE PAVEMENT
 STATION: 282+84.84



HORIZ.DATUM: NAD83 2011 GEOID: NAVD88 2012A
 GRID: NORTHING: 563393.404 EASTING: 1752683.690

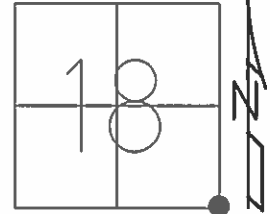
RECORD:
 FD RR SPIKE
 ATOP IPIN
 3" BELOW SURFACE
 STONE MAY BE BELOW
 7-5-11, KPM
 FD P.K./WASHER
 REF11
 3-30-15, EBW
 SET MAG/WASHER
 12-14-18, JFO



O.D.O.T. DISTRICT 2 SURVEY OFFICE (USE ONLY)

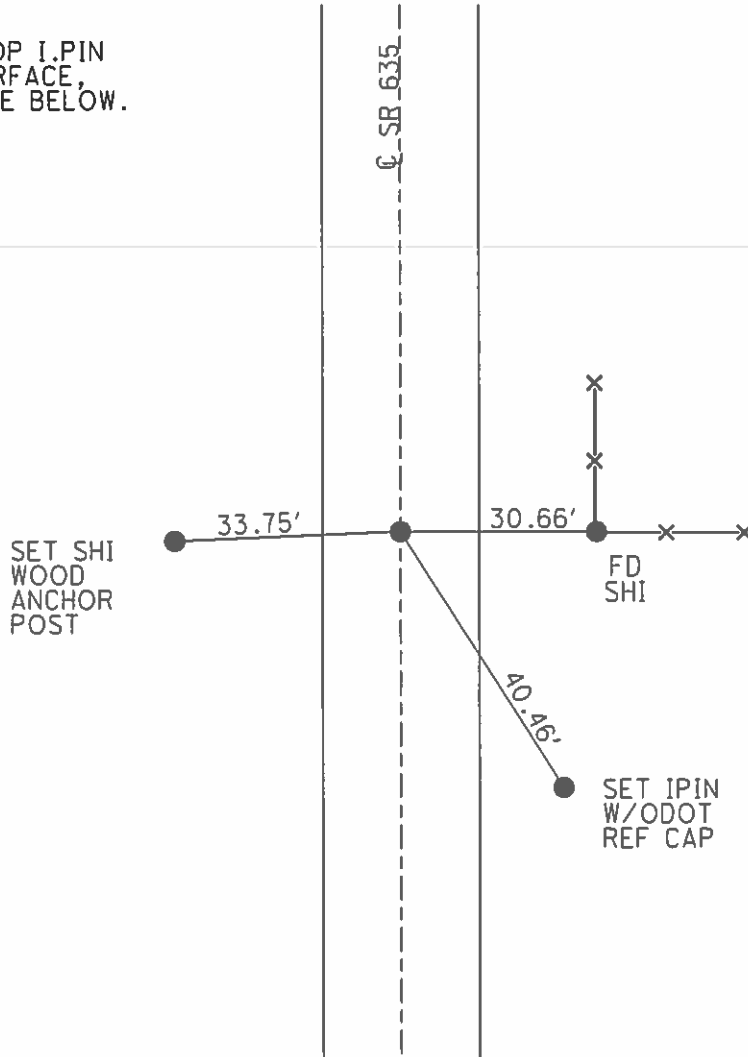
PERSONNEL _____ REFERENCE NO. 11 SHEET 1 OF 7
 NOTES LUMBREZER DATE 7-5-11 ROUTE SR 635
 H.C. MOSER WEATHER SUNNY COUNTY SENECA
 R.C. HARBAUGH TEMP. 85° TOWNSHIP LIBERTY
 _____ SECTION 18
 _____ T 3 N R 14 E

TYPE MONUMENT PK/WASHER
 ON SURFACE - ~~BELOW~~ ON
 LEFT - C PAV'T - RIGHT ON
10.3 TO LT EDGE PAVEMENT
 S.L.M. 283+56.42



GRID: NORTHING: 563393.45 EASTING: 1752683.56

RECORD:
 RR SPK. A TOP I.PIN
 3" BELOW SURFACE,
 STONE MAY BE BELOW.



O.D.O.T. DISTRICT 2 SURVEY OFFICE

PERSONNEL

REFERENCE NO. 11

SHEET 10 OF 11

NOTES BARNHISEL

H.C. CORDES

R.C. CANTERBURY

ROUSOS

DATE 8-29-96

WEATHER SUNNY

TEMP. +80°

ROUTE 635

COUNTY Seneca

TOWNSHIP LIBERTY

SECTION 18

T 3 N R 14 E

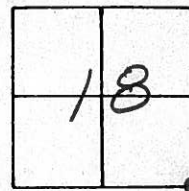
TYPE MONUMENT BOLT SPK & WASHER

ON SURFACE - ~~BELOW~~ yes

~~SET - & PAV'T.~~ yes

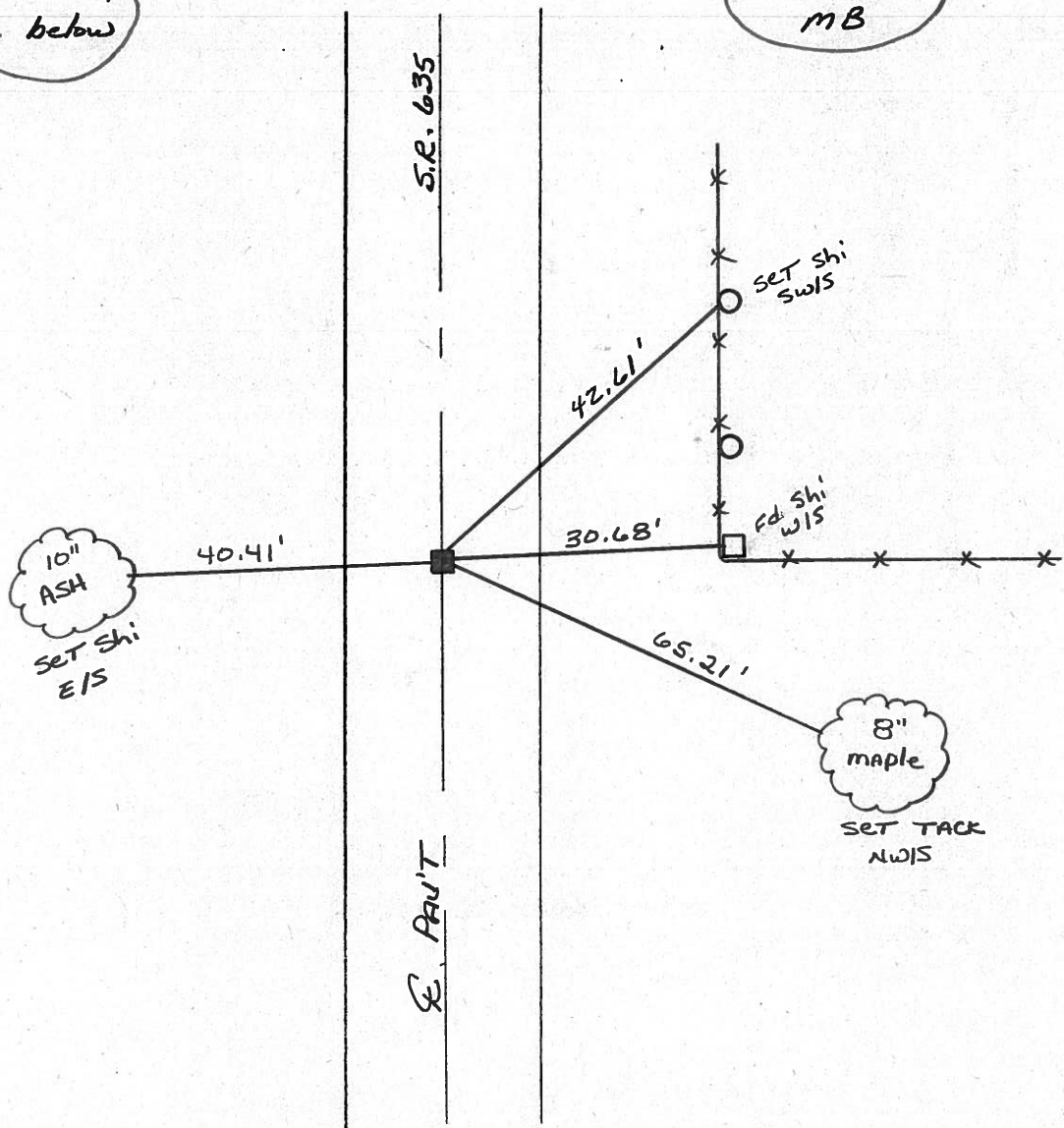
9.7 TO CT EDGE PAVEMENT

S.L.M. 283+21



RECORD: 282+79
RR SPK a top same,
STONE may be below

RESET PK & WASHER
10-8-96
MB



O.D.O.T. DISTRICT 2 SURVEY OFFICE

PERSONNEL

REFERENCE NO. 11

SHEET 11 OF 15

NOTES Cronin

DRAWN 6/25/86

H.C. Ripple

DATE 6/18/86

R.C. Geyman

WEATHER sunny

TEMP. 72°

ROUTE # 635

COUNTY Seneca

TOWNSHIP Liberty

SECTION 17, 18, 19, & 20

T 3 N R

TYPE MONUMENT sq. spike & washer

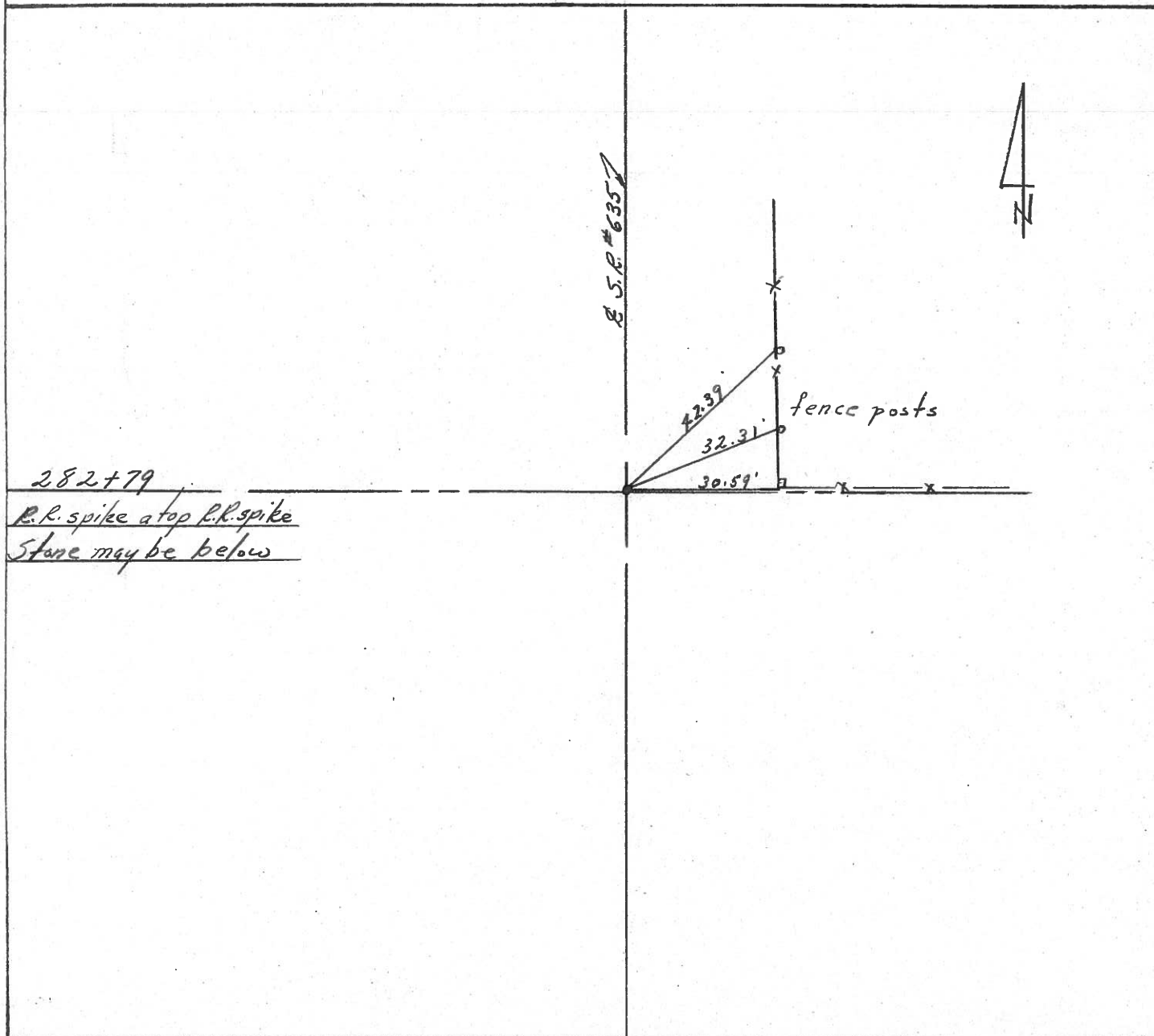
ON SURFACE - BELOW on surface

LEFT- & PAV'T. - RIGHT & P.V.T.

TO EDGE PAVEMENT

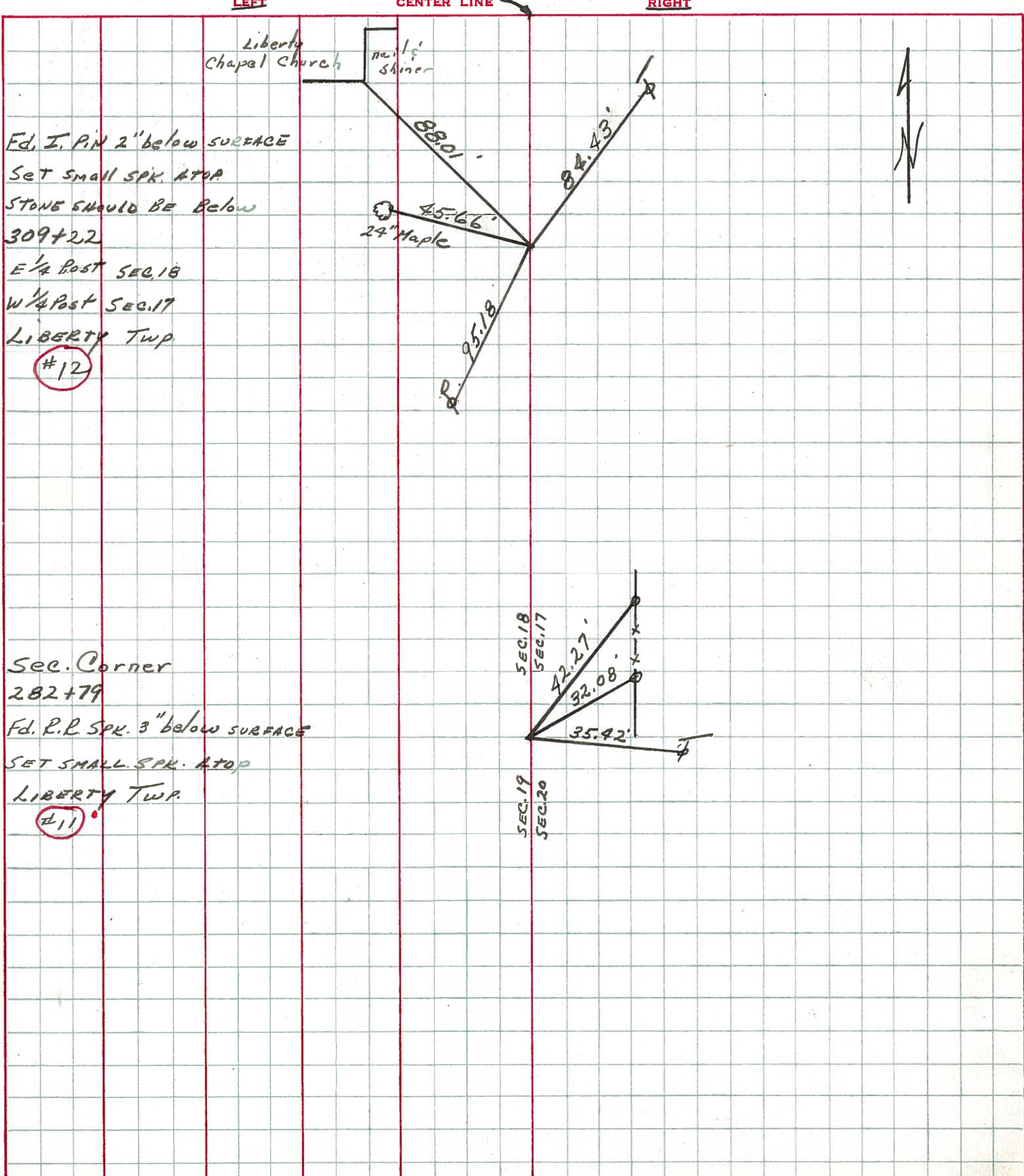
S.L.M. 5.3559±

18	17
19	20



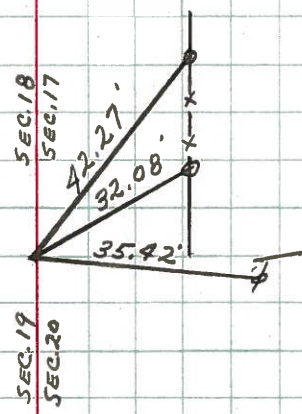
PERSONNEL	TITLE	PERSONNEL	TITLE	COUNTY	DATE	WEATHER	TEMP.
CRONIN				SENECA	July 1971		
				S. R. #635			
				SEC.			

DESCRIPTION TIES FOR CONTROL POINTS JOB NO.



Fd. I. Pin 2" below surface
 Set small SPK. ATOP
 STONE SHOULD BE Below
 309+22
 E 1/4 Post SEC. 18
 W 1/4 Post SEC. 17
 LIBERTY TWP
 #12

Sec. Corner
 282+79
 Fd. R.P. SPK. 3" below surface
 SET SMALL SPK. ATOP
 LIBERTY TWP.
 #11



7-17-68

PERSONNEL	TITLE	PERSONNEL	TITLE
Mosser			
Barbour			
Redding			
Potts			

COUNTY Seneca DATE 6-3-68

S. R. 635 WEATHER FAIR

SEC. SR. #18 to SR. #12 TEMP. 70°

DESCRIPTION Ties for Control Ties LEFT CENTER LINE RIGHT JOB NO.

12

E of R/w 1/2 sec 17 & 18
309+22 7-17-68

Reset small spk.

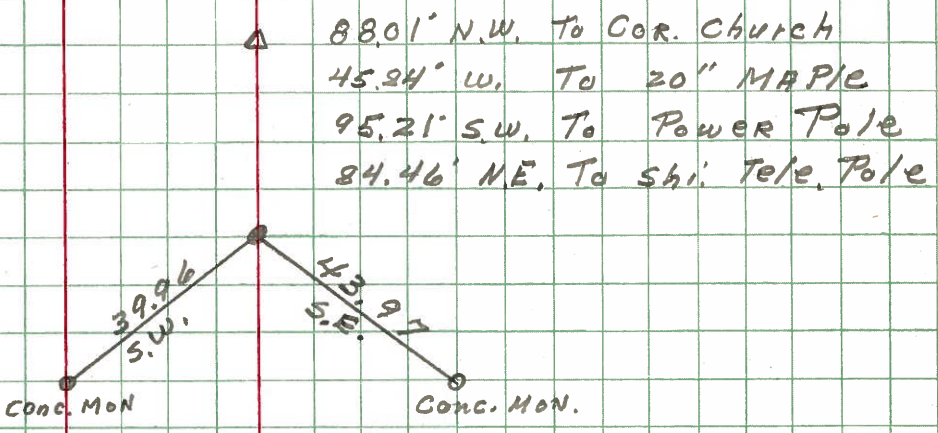
8751

Bridge & control shiner
304+21

Reset small spk.

8750

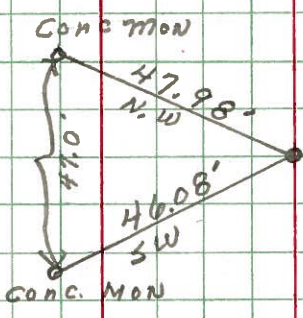
Br # 0574



Bridge & control shiner
301+23

Reset small spk.

8749

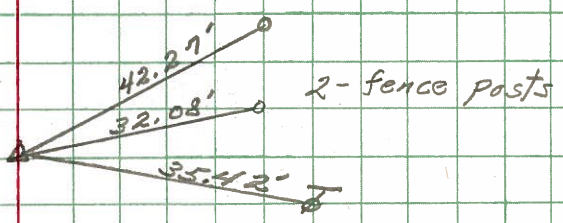


11

N.E. Cor sec. 19
282+79

Reset small spk.

8748



Bridge
& control shiner
278+22

Reset small spk.

8747

