

O.D.O.T. DISTRICT 2 SURVEY OFFICE (USE ONLY)

PERSONNEL

REFERENCE NO. 12

SHEET 2 OF 8

NOTES TRENKA

DATE 6-13-18

ROUTE SR 635

H.C. RHOADES

WEATHER CLOUDY

COUNTY SENECA

R.C. TRENKA

TEMP. 74°F

TOWNSHIP LIBERTY

DWG BY JAMES

PID 92128

SECTION 18

T 3 N R 14 E

TYPE MONUMENT P.K./WASHER

ON SURFACE - ~~BELOW~~ ON

OFFSET ☉ PAVEMENT ON LT : RT

9.9' TO RT EDGE PAVEMENT

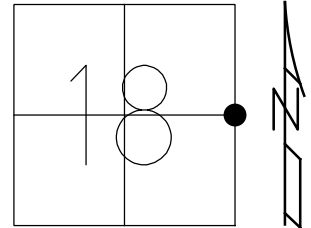
STATION: 309+28.17

HORIZ.DATUM: NAD83 2011

GEOID: NAVD88 2012A

GRID: NORTHING: 566036.712

EASTING: 1752693.822



TOP SE COR
S. I-BEAM
BELL STRUCTURE



92.73'

FD SHI
40" MAPLE



45.26'

93.55'

FD SHI



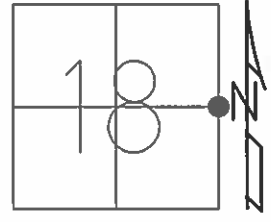
☉ SR 635

RECORD:
RR SPIKE
ATOP IPIN
3" BELOW SURFACE
STONE MAY BE BELOW
7-5-11, KPM
FD P.K./WASHER
REF12
3-30-15, EBW
SET MAG/WASHER
12-14-18, JFO

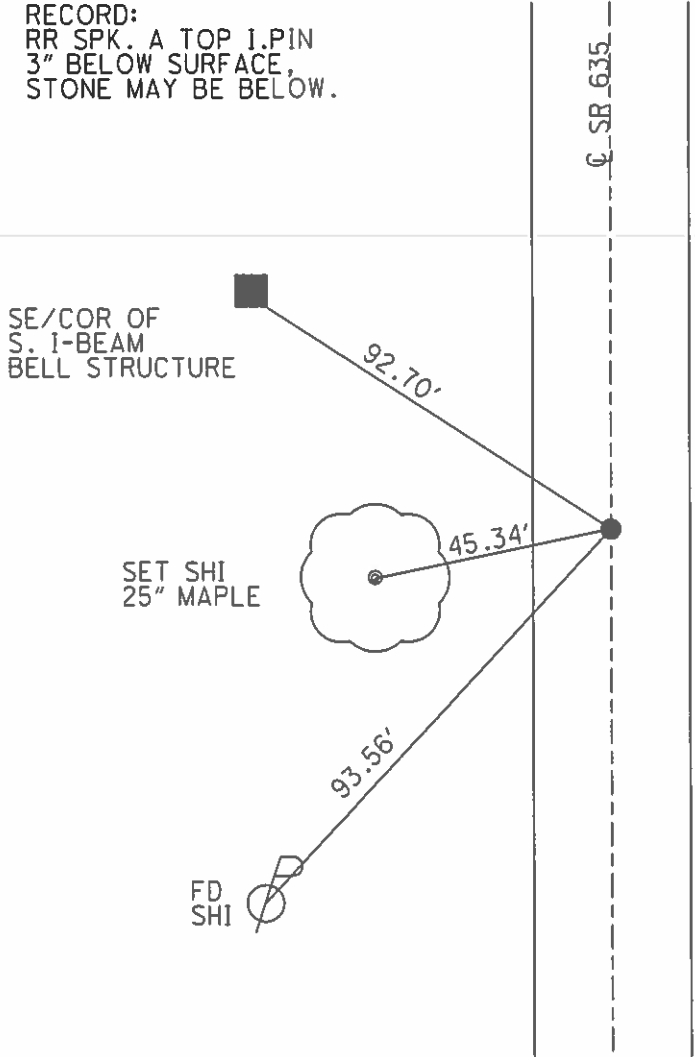
O.D.O.T. DISTRICT 2 SURVEY OFFICE (USE ONLY)

PERSONNEL _____ REFERENCE NO. 12 SHEET 2 OF 7
 NOTES LUMBREZER DATE 7-5-11 ROUTE SR 635
 H.C. MOSER WEATHER SUNNY COUNTY SENECA
 R.C. HARBAUGH TEMP. 85° TOWNSHIP LIBERTY
 _____ SECTION 18
 _____ T 3 N R 14 E

TYPE MONUMENT PK/WASHER
 ON SURFACE - ~~BELOW~~ ON
 LEFT - Q PAV'T - RIGHT ON
9.9 TO RT EDGE PAVEMENT
 S.L.M. 309+99.70
 GRID: NORTHING: 566036.71 EASTING: 1752693.84



RECORD:
 RR SPK. A TOP I.PIN
 3" BELOW SURFACE,
 STONE MAY BE BELOW.



O.D.O.T. DISTRICT 2 SURVEY OFFICE

PERSONNEL

REFERENCE NO. 12

SHEET 11 OF 11

NOTES BARNHISEL

H.C. CORDES

R.C. CANTERBURY

Rousas

DATE 8-29-96

WEATHER SUNNY

TEMP. +80°

ROUTE 635

COUNTY Seneca

TOWNSHIP LIBERTY

SECTION 18

T3 N R 14 E

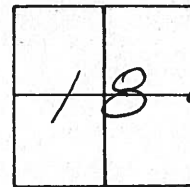
TYPE MONUMENT BOLT SPIKE

ON SURFACE - ~~BELOW~~ yes

~~LEFT~~ - & PAV'T. - RIGHT yes

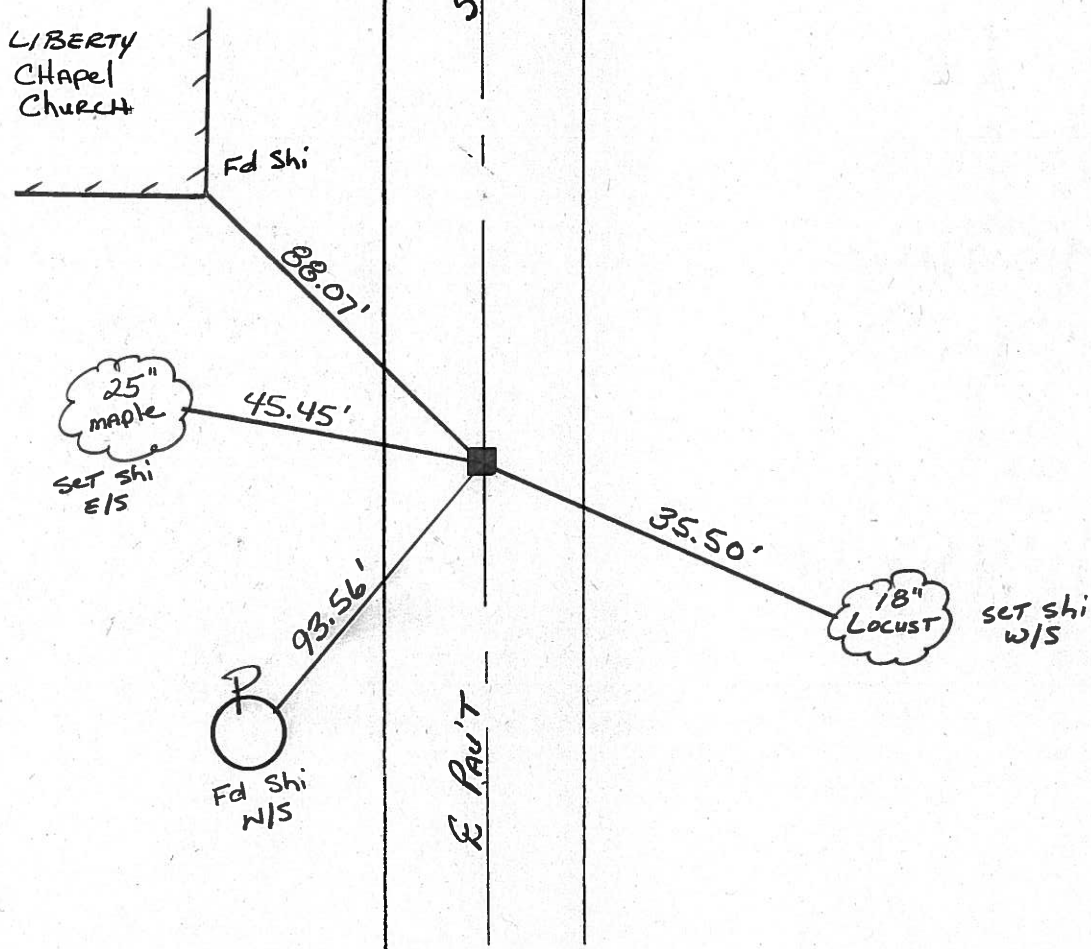
9.9 TO RT EDGE PAVEMENT

S.L.M. 309+66



RECORD: 309+22
RR SPK a TOP IRON PIN
3" below SURFACE, STONE
MAY be below

RESET PK & WASHER
10-8-96
MB



O.D.O.T. DISTRICT 2 SURVEY OFFICE

PERSONNEL

REFERENCE NO. 12

SHEET 12 OF 15

NOTES Cronin

DRAWN 6/25/86

H.C. Ripple

DATE 6/18/86

R.C. Geyman

WEATHER _____

TEMP. _____

ROUTE # 635

COUNTY Seneca

TOWNSHIP Liberty

SECTION 17 & 18

T 3 N R 14 E

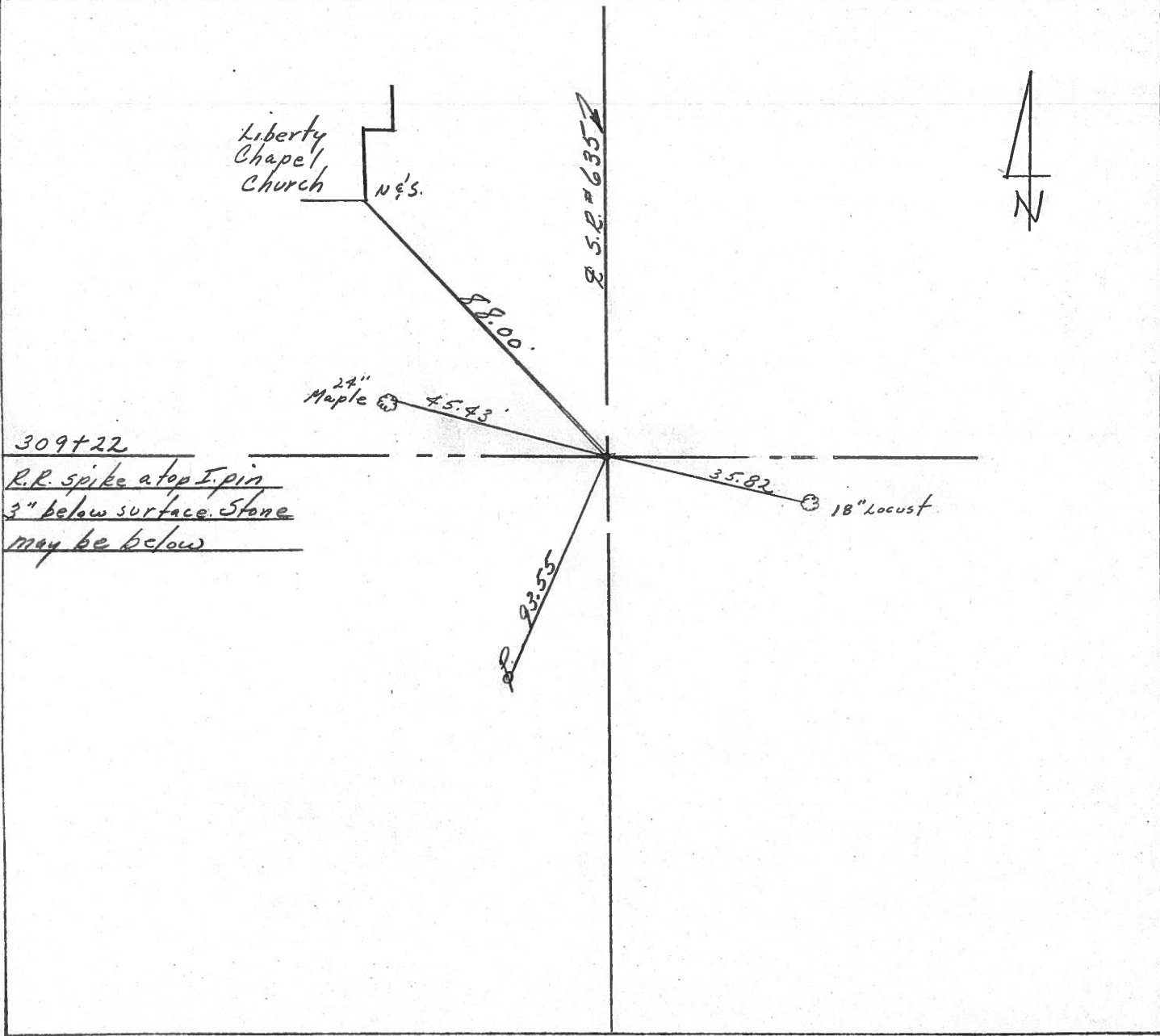
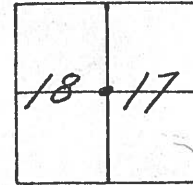
TYPE MONUMENT sg. spike & washer

ON SURFACE - BELOW on surface

LEFT- & PAV'T. - RIGHT & P.V.T.

TO _____ EDGE PAVEMENT

S.L.M. 5.8564 ±



PERSONNEL TITLE PERSONNEL TITLE

CRONIN

COUNTY SENECA

DATE July 1971

S. R. #635

WEATHER

SEC.

TEMP.

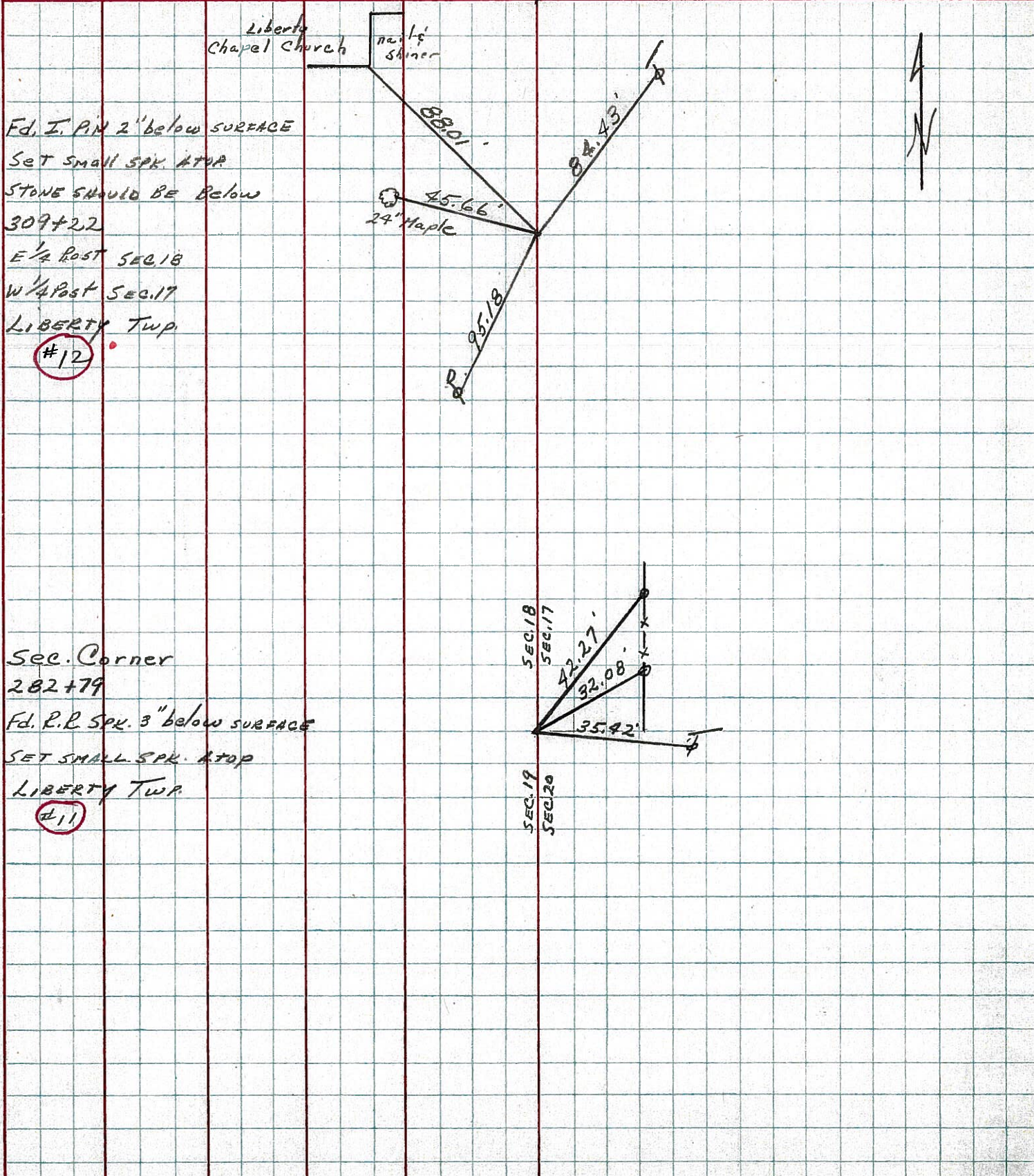
DESCRIPTION TIES FOR CONTROL POINTS

JOB NO.

LEFT

CENTER LINE

RIGHT



PERSONNEL TITLE PERSONNEL TITLE COUNTY Seneca DATE 6-3-68
Mosser Barbour Redding Potts S. R. 635 WEATHER FAIR
 SEC. SR. #10 to SR. #12 TEMP. 70°

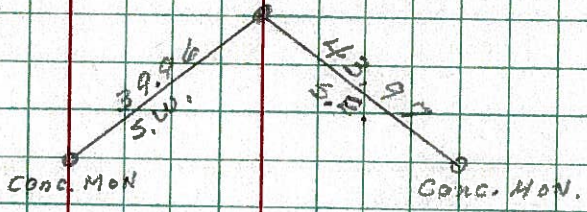
DESCRIPTION Ties for Control Ties JOB NO. _____

12

1/2 of R/W 1/2 Sec 17 #18
 309+22 7-17-68
 Reset small spk.
8751

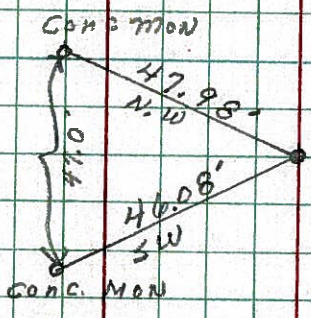
88.01' N.W. To Cor. Church
 45.24' W. To 20" MAPLE
 95.21' S.W. To Power Pole
 24.46' N.E. To Shi. Tele. Pole

Bridge & CONTROL SHINER
 304+21
 Reset small spk.
8750



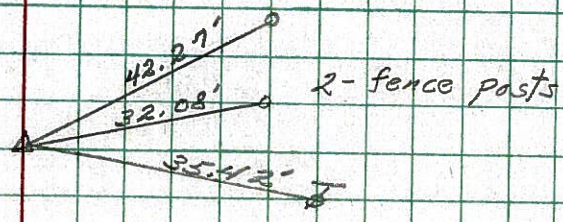
Bn # 0574

Bridge & CONTROL SHINER
 301+23
 Reset small spk.
8749



11

N.E. Cor Sec. 19
 282+79
 Reset small spk.
8748



Bridge & CONTROL SHINER
 278+22
 Reset small spk.
8747

