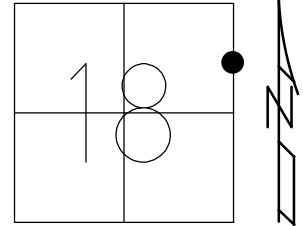


O.D.O.T. DISTRICT 2 SURVEY OFFICE (USE ONLY)

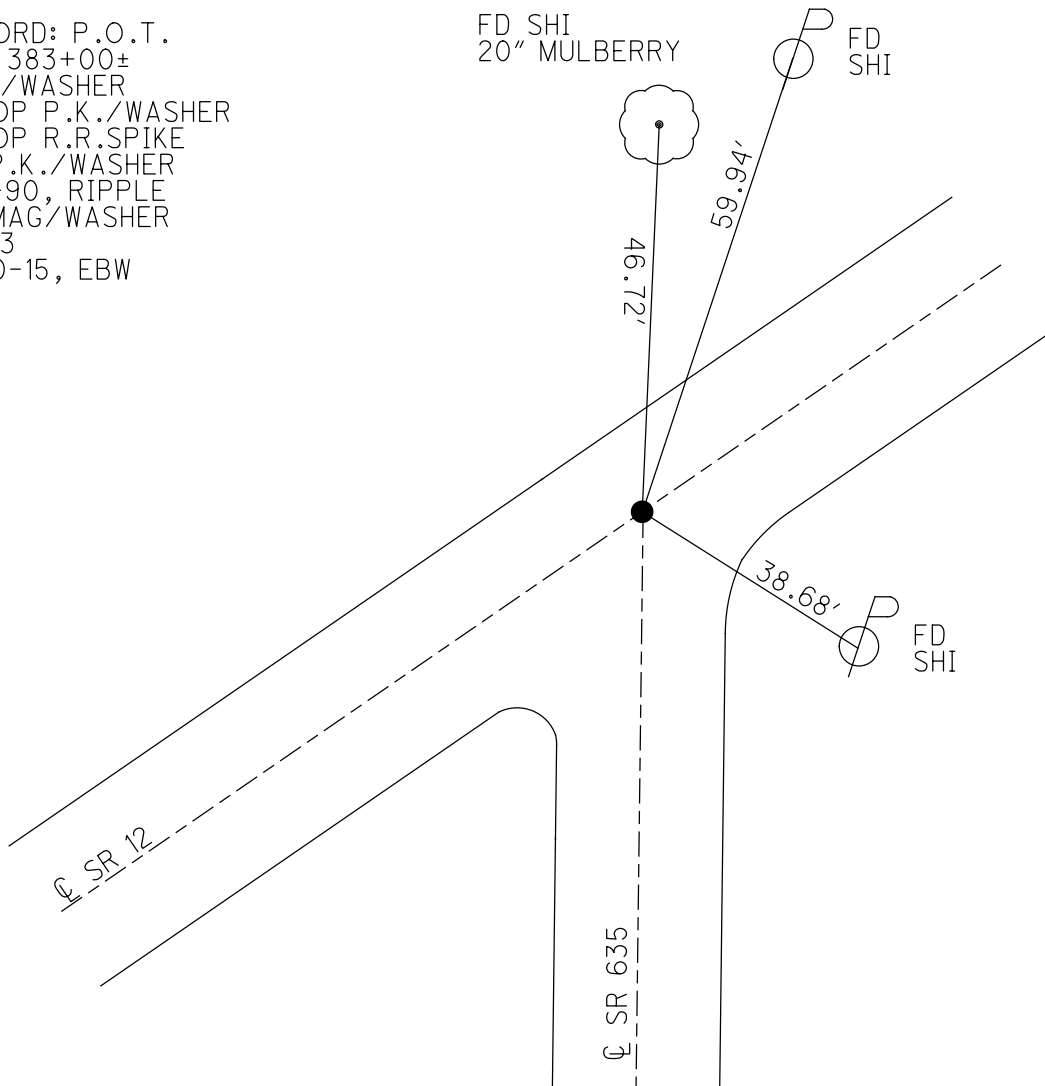
PERSONNEL \_\_\_\_\_ REFERENCE NO. 13 SHEET 3 OF 8  
 NOTES CRONIN DATE 2-5-90 ROUTE SR 635  
 H.C. RIPPLE WEATHER SUNNY-WINDY COUNTY SENECA  
 R.C. BARBOUR TEMP. 37° TOWNSHIP LIBERTY  
 \_\_\_\_\_ GEYMAN \_\_\_\_\_ SECTION 18  
 DWG BY JAMES PID 92128 T 3 N R 14 E

TYPE MONUMENT P.K./WASHER  
 ON SURFACE - ~~BELOW~~ ON \_\_\_\_\_  
 OFFSET  $\odot$  PAVEMENT \_\_\_\_\_ LT : RT  
 \_\_\_\_\_ TO \_\_\_\_\_ EDGE PAVEMENT  
 STATION: 320+76.83

HORIZ.DATUM: NAD83 2011 GEOID: NAVD88 2012A  
 GRID: NORTHING: 567185.311 EASTING: 1752705.317



RECORD: P.O.T.  
 STA 383+00±  
 P.K./WASHER  
 A TOP P.K./WASHER  
 A TOP R.R.SPIKE  
 FD P.K./WASHER  
 2-5-90, RIPPLE  
 FD MAG/WASHER  
 REF13  
 3-30-15, EBW



# O.D.O.T. DISTRICT 2 SURVEY OFFICE

PERSONNEL

NOTES Cronin  
 H.C. Ripple  
 R.C. Barboer  
Geyman

REFERENCE NO. 53  
ON SR 12

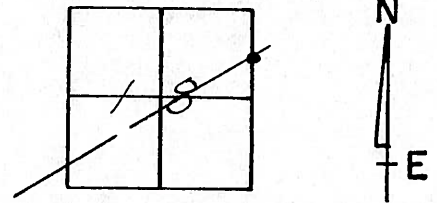
SHEET 17 OF \_\_\_\_\_

DATE 2/05/90  
 WEATHER sunny-windy  
 TEMP. 37°

ROUTE #12  
 COUNTY Seneca  
 TOWNSHIP Liberty  
 SECTION 18  
 T3 NR 14 E

TYPE MONUMENT P.K. & washer  
 ON SURFACE - BELOW \_\_\_\_\_  
 LEFT - € PAV'T. - RIGHT \_\_\_\_\_  
 \_\_\_\_\_ TO \_\_\_\_\_ EDGE PAVEMENT  
 S.L.M. \_\_\_\_\_

13



P.O.T. ??

383+00 ± (old Sta.)  
P.K. & washer atop same  
atop R.R. spike

