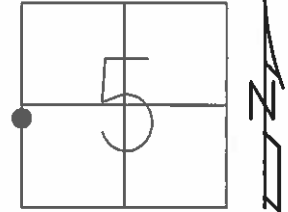


O.D.O.T. DISTRICT 2 SURVEY OFFICE (USE ONLY)

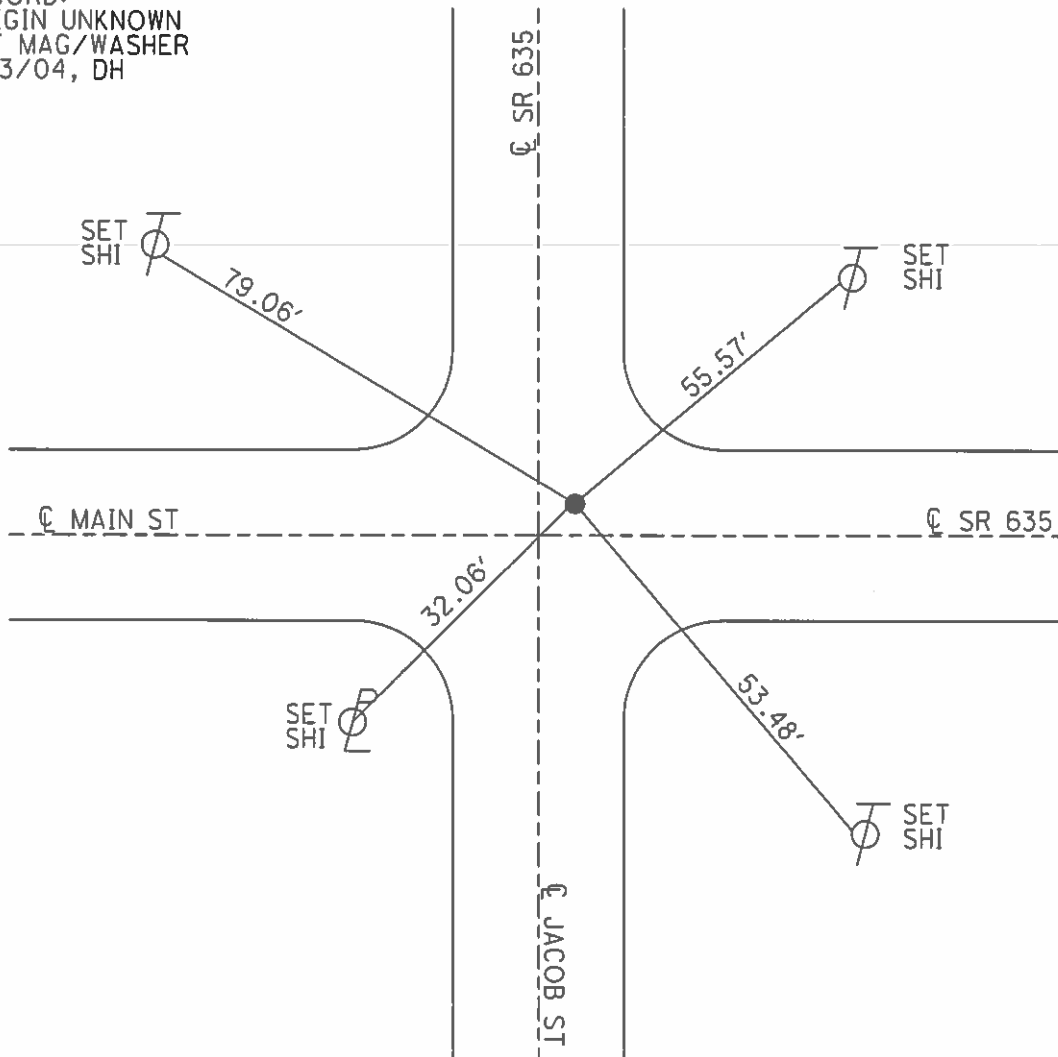
PERSONNEL _____ REFERENCE NO. 15 SHEET 4 OF 7
 NOTES HOMAN DATE 4/26/04 ROUTE SR 635
 H.C. ARMS WEATHER SUNNY COUNTY SENECA
 R.C. HOOVER TEMP. 60° TOWNSHIP LIBERTY
 SECTION 5
 T 3 N R 14 E

TYPE MONUMENT P.K.NAIL
 ON SURFACE - ~~BELOW~~ ON _____
~~LEFT - C PAVT~~ - RIGHT 3.5' N & E
 - TO - EDGE PAVEMENT
 S.L.M. 428+77



GRID: NORTHING: _____ EASTING: _____

RECORD:
 ORIGIN UNKNOWN
 SET MAG/WASHER
 8/13/04, DH



15

ODOT DISTRICT 2 SURVEY OFFICE

Fd PK Nail
3.5' North of E
3.9' East of E

Homan Notes
Hooker RC
Arms HC
4-26-04

Sunny
60°

Set Mag & Washer
8-13-04
DCH

