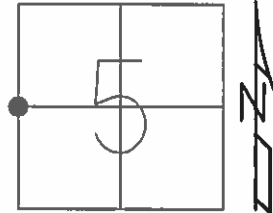


O.D.O.T. DISTRICT 2 SURVEY OFFICE (USE ONLY)

PERSONNEL _____ REFERENCE NO. 16 SHEET 5 OF 7

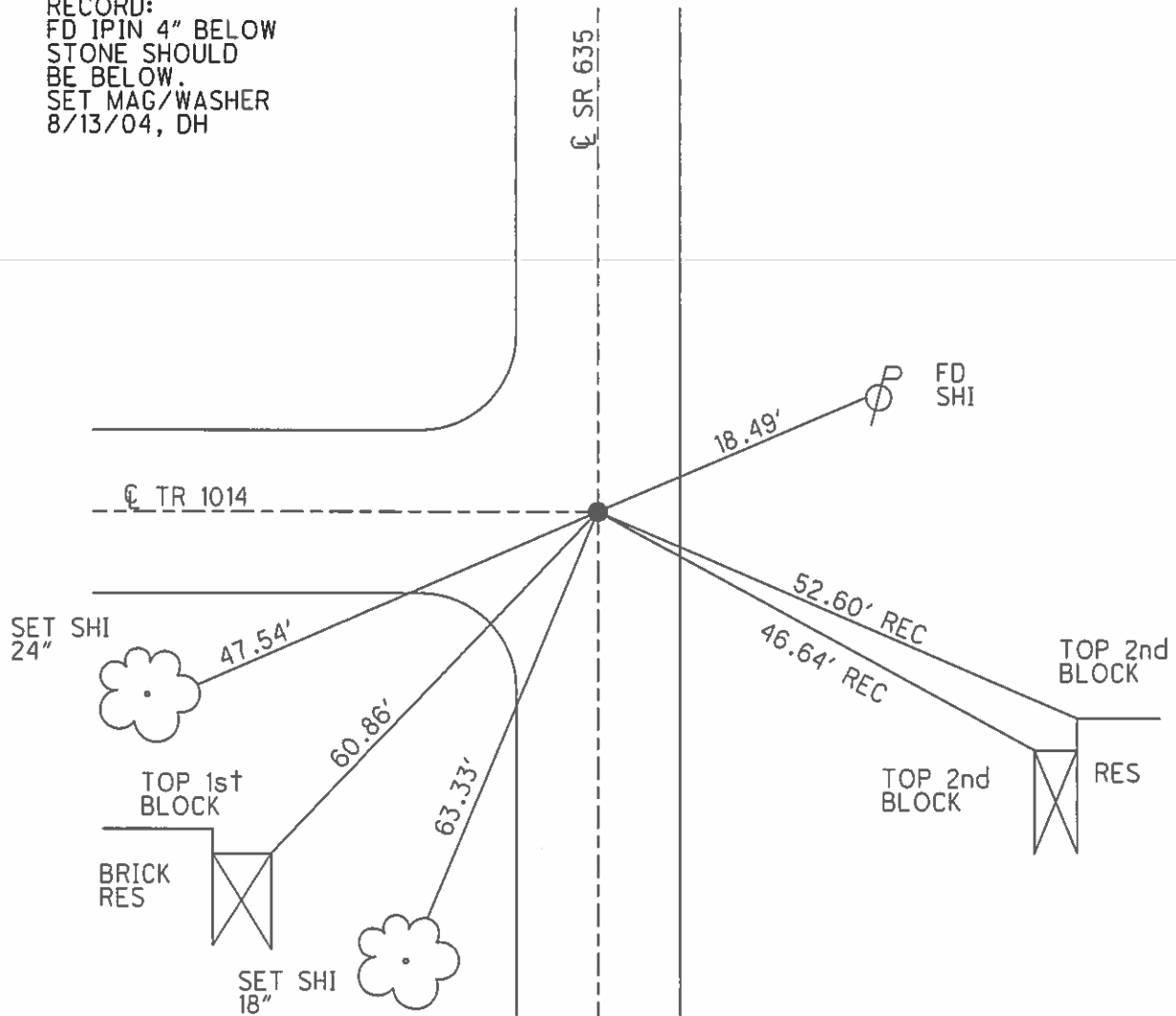
NOTES HOMAN DATE 4/26/04 ROUTE SR 635
 H.C. ARMS WEATHER SUNNY COUNTY SENECA
 R.C. HOOKER TEMP. 60° TOWNSHIP LIBERTY
 SECTION 5
 T 3 N R 14 E

TYPE MONUMENT P.K.NAIL
 ON SURFACE - ~~BELOW~~ ON _____
~~LEFT~~ - Q PAV'T = ~~RIGHT~~ ON _____
 - TO - EDGE PAVEMENT
 S.L.M. 435+05



GRID: NORTHING: _____ EASTING: _____

RECORD:
 FD IPIN 4" BELOW
 STONE SHOULD
 BE BELOW.
 SET MAG/WASHER
 8/13/04, DH



O.D.O.T. DISTRICT 2 SURVEY OFFICE

PERSONNEL

REFERENCE NO. 16

SHEET 3 OF 5

NOTES HOMAN

DATE 4-26-04

ROUTE SR 635

H.C. ARMS

WEATHER SUNNY

COUNTY SENECA

R.C. HOOVER

TEMP. 60°

TOWNSHIP LIBERTY

SECTION 5

T 3 N R 14 E

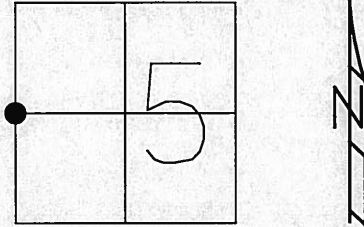
TYPE MONUMENT PK NAIL

ON SURFACE ~~BELOW~~ ON

~~LEFT~~ - Q PAV'T - ~~RIGHT~~ ON

TO EDGE PAVEMENT

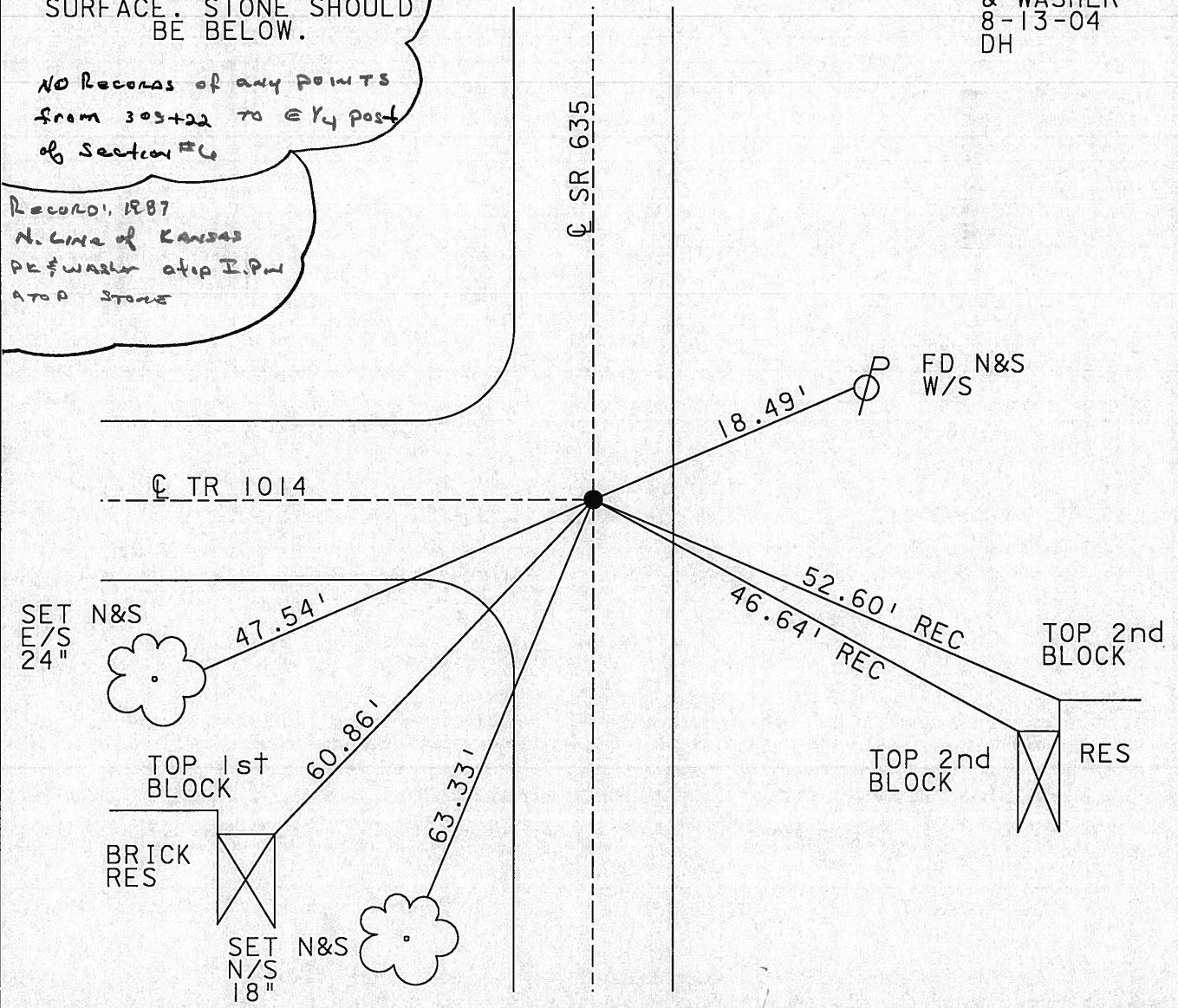
S.L.M. 435+05



Record: 1986
 I. PIN 4" BELOW SURFACE. STONE SHOULD BE BELOW.
 NO RECORDS of any points from 303+22 to ELY post of Section #6

Record: 1987
 N. Line of Kansas
 PE washer atop I. Pin
 atop stone

SET MAG NAIL & WASHER
 8-13-04
 DH



O.D.O.T. DISTRICT 2 SURVEY OFFICE

PERSONNEL

REFERENCE NO. 16

SHEET 13 OF 15

NOTES

H.C.

R.C.

DATE

WEATHER

TEMP.

ROUTE

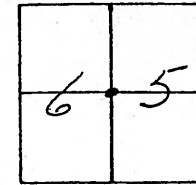
COUNTY

TOWNSHIP

SECTION

T3 N R 14 E

TYPE MONUMENT ~~sq. spike & washer~~ ^{PK}
 ON SURFACE - ~~BELOW~~ ^{on surface}
 LEFT- & PAV'T. - RIGHT & P.V.T. ✓
 9.2' TO ^L EDGE PAVEMENT
 S.L.M. 8.11 ± = 428+20.8



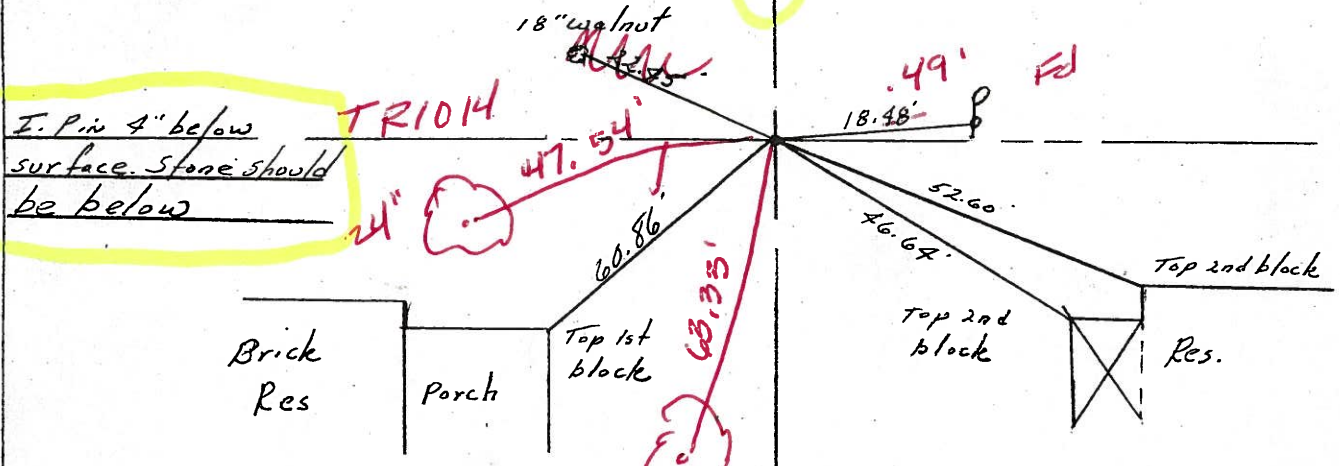
Set Mag & Washer

8-13-08

DCH



S.P.#6357



I. Pin 4" below surface. Stone should be below

TR1014

No Records of any points from 309+22 to E 1/4 Post of Section #6

O.D.O.T. DISTRICT 2 SURVEY OFFICE

PERSONNEL

REFERENCE NO. 16

SHEET OF

NOTES Cranin

H.C. Ripple

R.C. Barbour

Geyman

DATE 9/14/87

WEATHER sunny

TEMP. 65°

ROUTE #635

COUNTY Seneca

TOWNSHIP Liberty

SECTION 5

T 3 N R 14 E

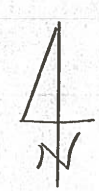
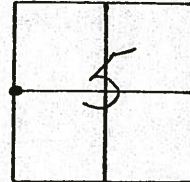
TYPE MONUMENT P.K. washer

ON SURFACE - BELOW on surface

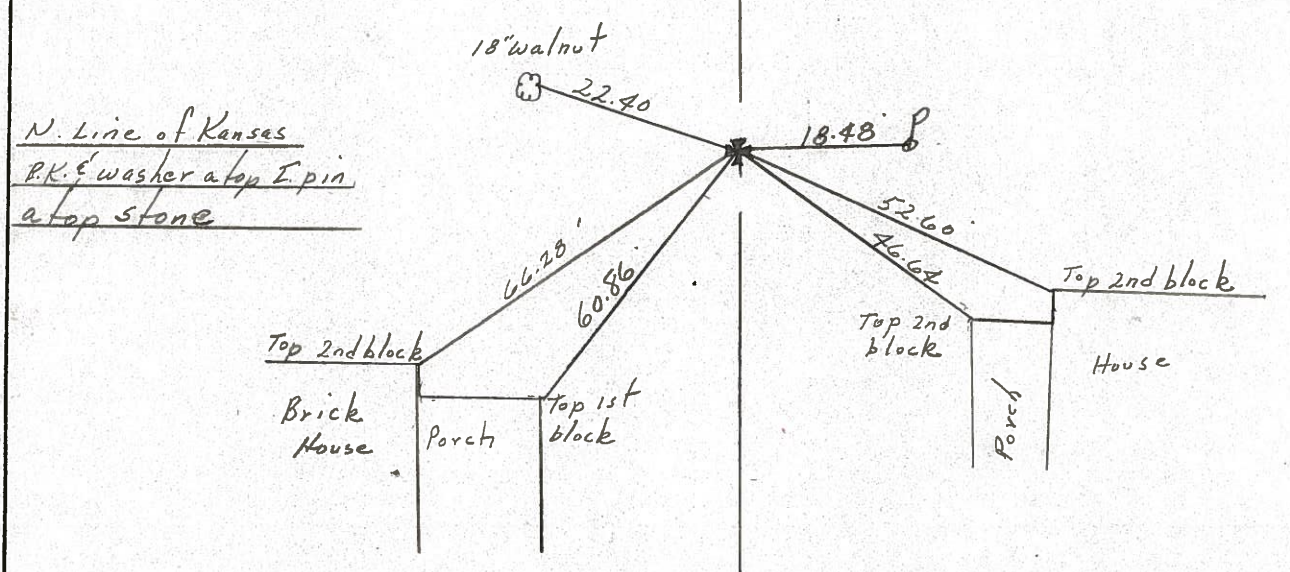
LEFT - ☉ PAV'T. - RIGHT

 TO EDGE PAVEMENT

S.L.M.



S.R. #635



Resurfaced 2004

O.D.O.T. DISTRICT 2 SURVEY OFFICE

PERSONNEL

REFERENCE NO. 16

SHEET 13 OF 15

NOTES Cromin

H.C. Ripple

R.C. _____

DATE 6/20/86

WEATHER sunny

TEMP. 73°

ROUTE #635

COUNTY Seneca

TOWNSHIP Liberty

SECTION 5 & 6

T 3 N R 14 E

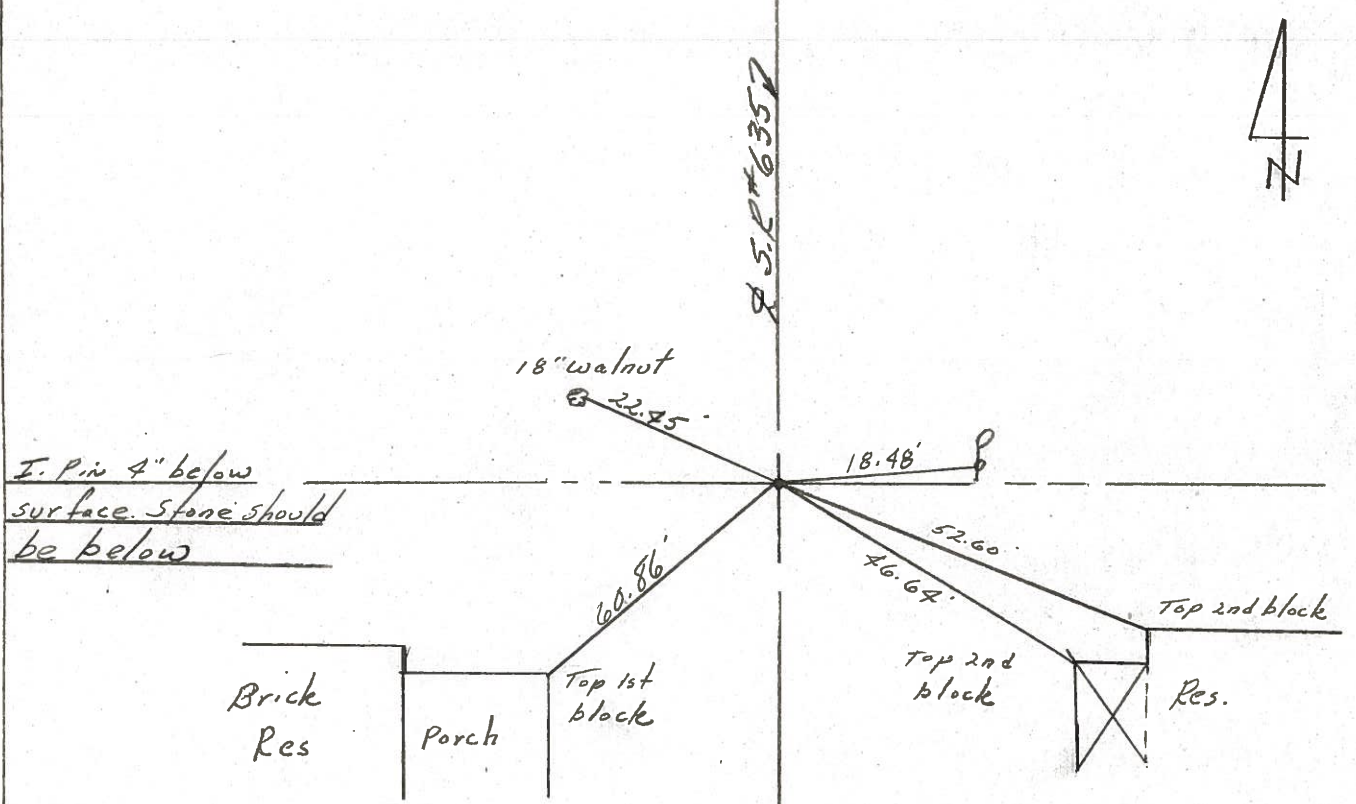
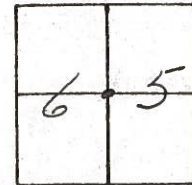
TYPE MONUMENT sq. spike & washer

ON SURFACE - BELOW on surface

LEFT- & PAV'T. - RIGHT & P.V.T.

TO EDGE PAVEMENT

S.L.M. 8.11 ±



No Records of any points from 309+22 to E & Post of Section #6

PERSONNEL TITLE PERSONNEL TITLE

CRONIN

COUNTY SENECA

DATE July 1971

S. R. #635

WEATHER

SEC.

TEMP.

DESCRIPTION TIES FOR CONTROL POINTS

JOB NO.

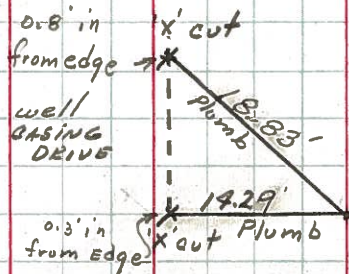
LEFT

CENTER LINE

RIGHT

18

E 1/4 Post SEC. 6
W 1/4 Post SEC. 5
Fd. I. Pipe
SET RR SPK. ATOP
LIBERTY TWP.

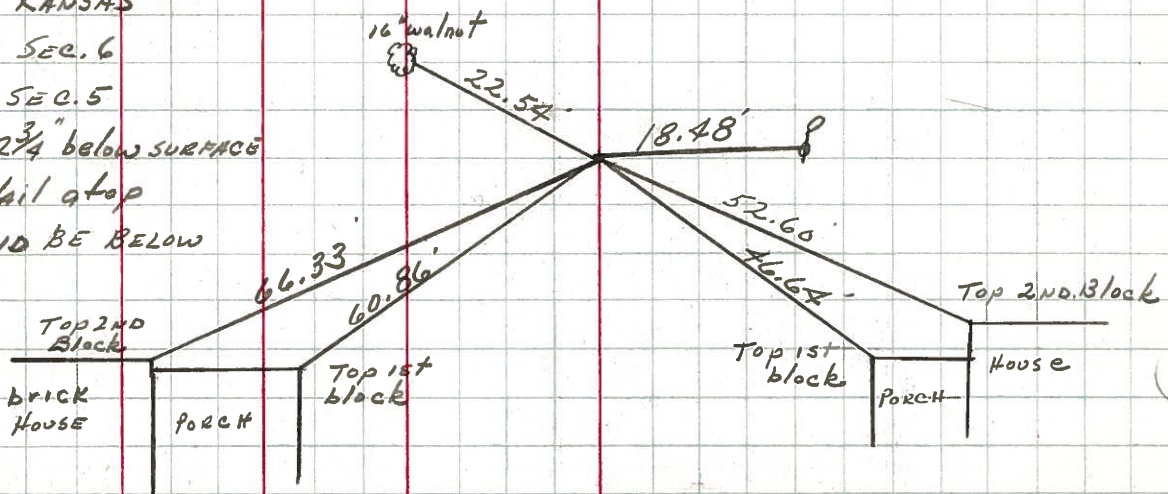


See sheet #8 for Co. Line



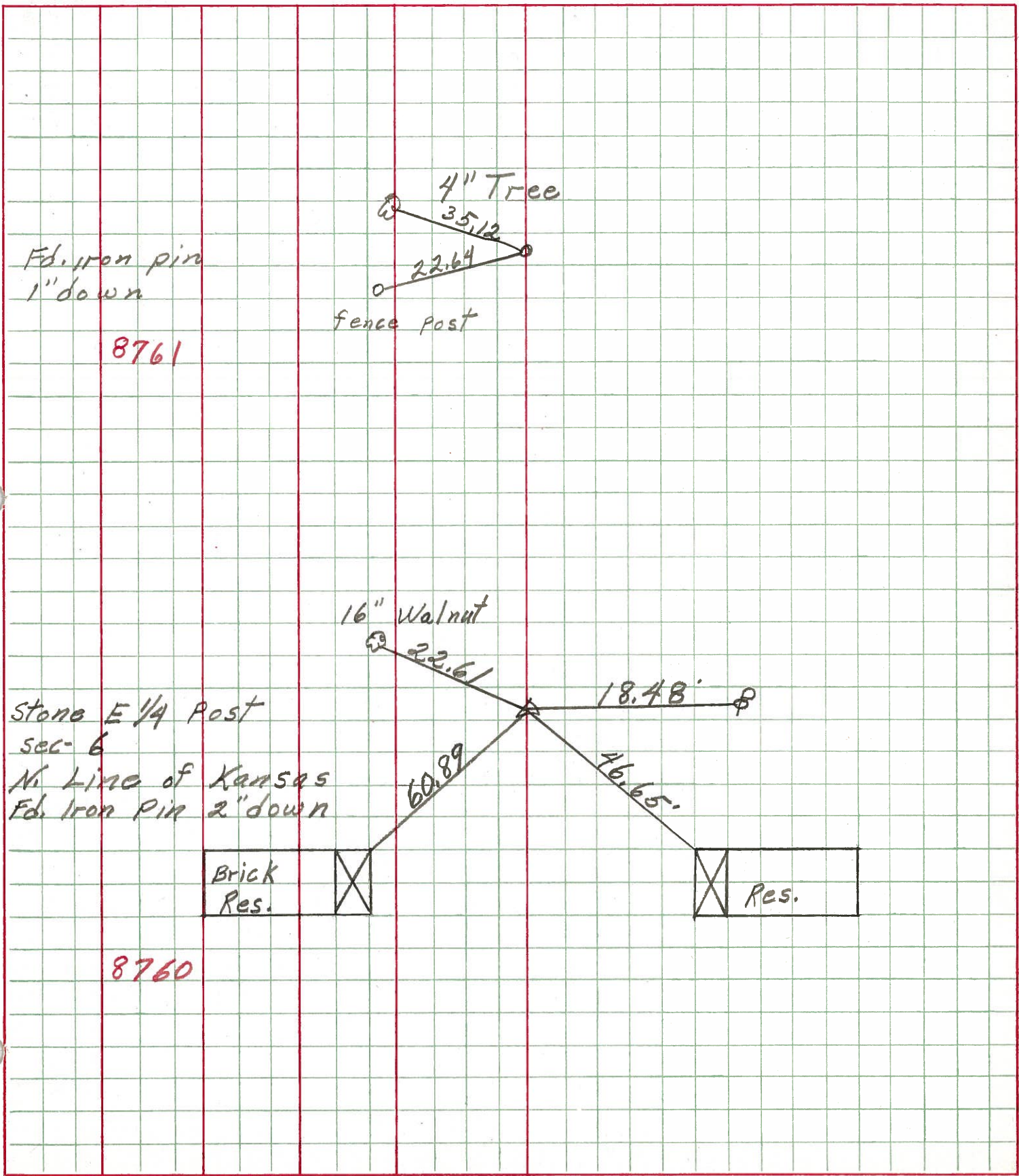
16

LIBERTY TWP.
N. LINE OF KANSAS
E 1/4 Post SEC. 6
W 1/4 Post SEC. 5
Fd. I. Pin 2 3/4" below SURFACE
SET P.K. Nail atop
STONE SHOULD BE BELOW



* No Records of any points from Sta. 309+22 to E 1/4 Post Sec. #6

PERSONNEL TITLE PERSONNEL TITLE COUNTY Seneca DATE 12-30-69
Schneider _____
Mosser _____ S. R. 635 WEATHER Fair
Barbour _____
Potts _____ SEC. N. of S.R. 12 TEMP. 30°
 DESCRIPTION Ties for Control Points JOB NO. _____
 LEFT CENTER LINE RIGHT



8761

16

8760

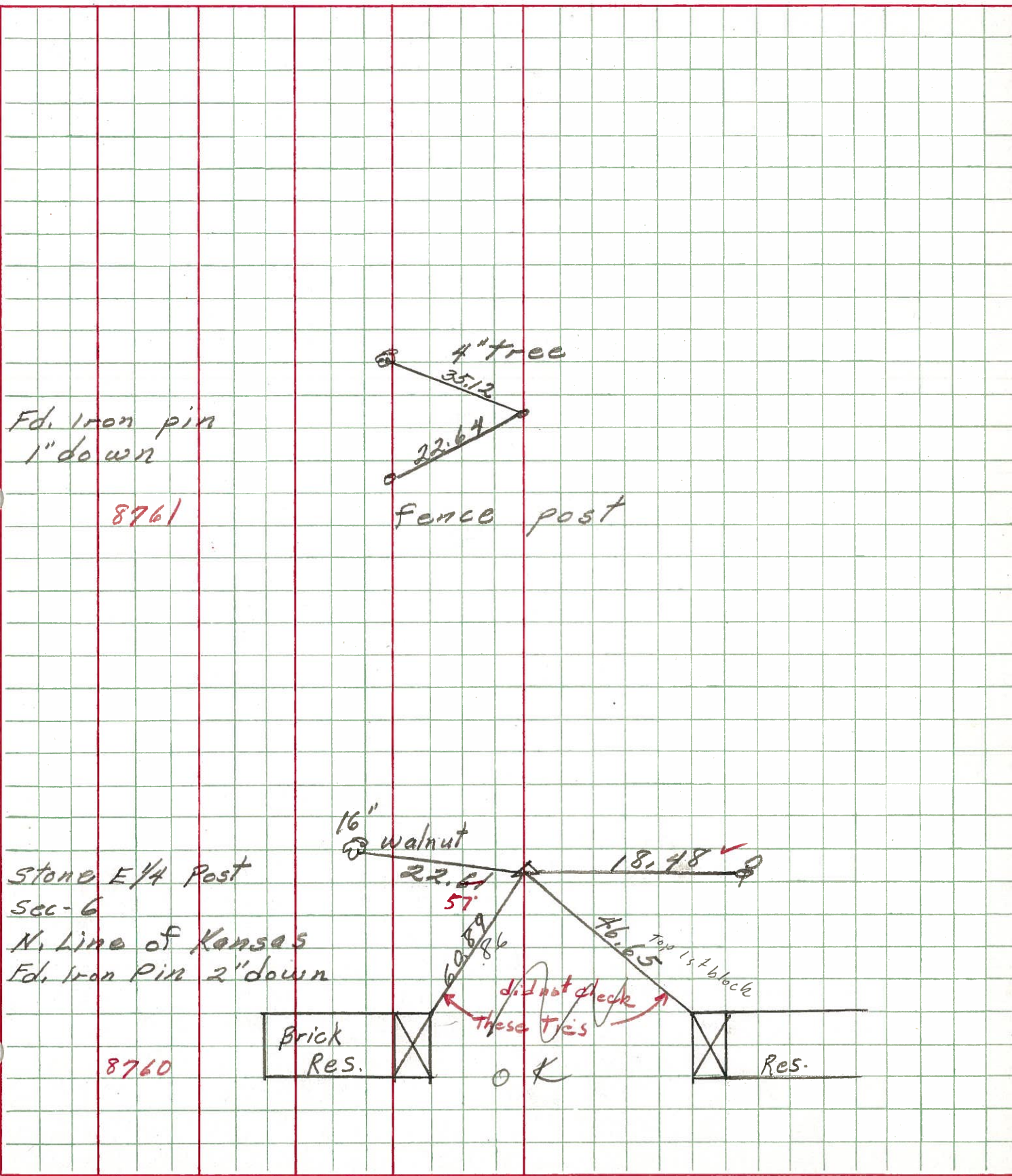
PERSONNEL TITLE PERSONNEL TITLE

COUNTY Seneca DATE 12-30-69

S. R. 635 WEATHER _____

SEC. N. of S.R. 12 TEMP. _____

DESCRIPTION LEFT CENTER LINE RIGHT JOB NO.



Fd. Iron pin
1" down

8761

fence post

16

Stone E/4 Post
Sec-6

N. Line of Kansas
Fd. Iron Pin 2" down

8760

Brick
Res.

Res.

OK

PERSONNEL TITLE PERSONNEL TITLE

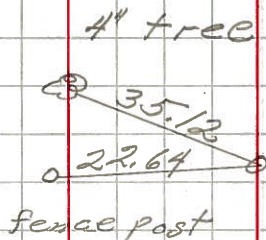
COUNTY Seneca DATE 12-15-65

S. R. # 635 WEATHER

SEC. TEMP.

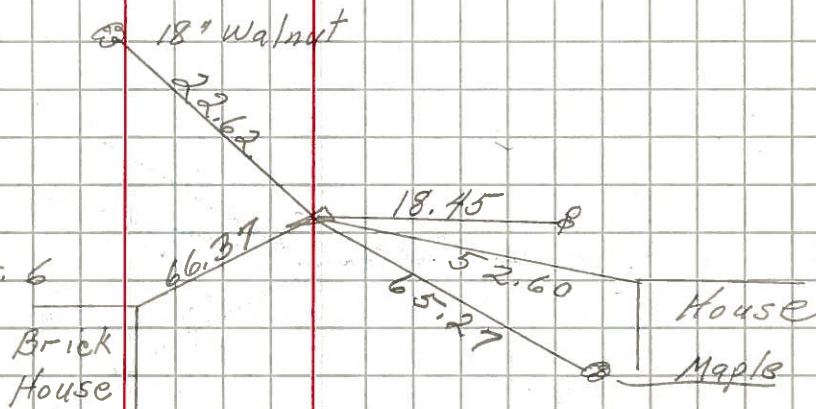
DESCRIPTION LEFT CENTER LINE RIGHT JOB NO.

Found Iron Pin
1" below surface
N.E. cor. of S.W. 1/4 of
N. E. 1/4 of Sec 6



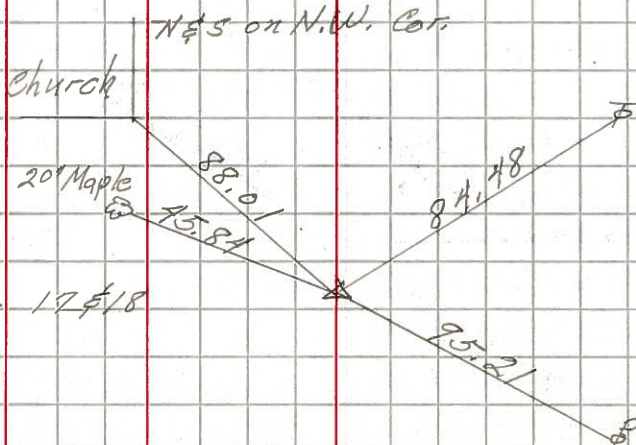
641

Found Iron Pin
3/4" below surface
Stone E 1/4 Post sec. 6
Kansas



640

Found Iron Pin
1 1/2" below surface
Stone on R/W 1/2 sec. 17 & 18



639

16