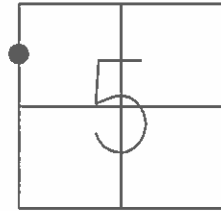


O.D.O.T. DISTRICT 2 SURVEY OFFICE (USE ONLY)

PERSONNEL _____ REFERENCE NO. 18 SHEET 6 OF 7
 NOTES HOMAN DATE 4/26/04 ROUTE SR 635
 H.C. ARMS WEATHER SUNNY COUNTY SENECA
 R.C. HOOKE TEMP. 60° TOWNSHIP LIBERTY
 SECTION 5
T 3 N R 14 E

TYPE MONUMENT P.K./WASHER
 ON SURFACE - ~~BELOW~~ ON _____
 LEFT - ~~C PAVT~~ - RIGHT 0.5'
9.2' TO LT EDGE PAVEMENT
 S.L.M. 447+62

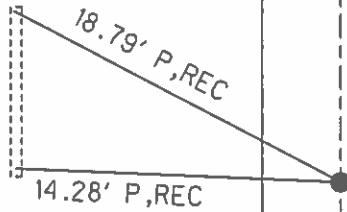


GRID: NORTHING: _____ EASTING: _____

RECORD:
 SET P.K./WASHER
 A TOP P.K./WASHER
 A TOP R.R. SPIKE
 A TOP IRON PIPE
 SET MAG NAIL
 8/13/04

SR 635

"X" CUTS 0.8'
 IN FROM ENDS
 STEEL PIPE



O.D.O.T. DISTRICT 2 SURVEY OFFICE

PERSONNEL

REFERENCE NO. 18

SHEET 4 OF 5

NOTES HOMAN

DATE 4-26-04

ROUTE #635

H.C. ARMS

WEATHER SUNNY

COUNTY Seneca

R.C. HOOKER

TEMP. 60°

TOWNSHIP Liberty

SECTION 5

T 3 N R 14 E

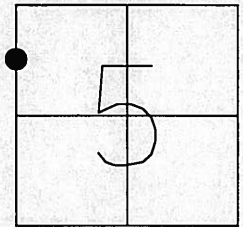
TYPE MONUMENT PK & WASHER

ON SURFACE ~~- BELOW~~ ON

LEFT ~~- C PAVT - RIGHT~~ 0.5' LT

9.2' TO LT EDGE PAVEMENT

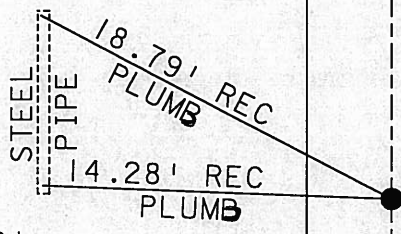
S.L.M. 447+62



Record: 1987
Set P.K. & washer a top
same a top R.R. spike
a top iron pipe

NOTE: NO MAG NAIL WAS
RESET DUE TO REFERENCE
CONTROL TIES WERE REMOVED
PRIOR TO RESETTING CONTROL
POINT. DIG WHEN NEEDED
AT A LATER DATE.
8-13-04

"X" CUT 0.8'
IN FROM END



"X" CUT 0.8'
IN FROM END

SR #635

C Pavement

O.D.O.T. DISTRICT 2 SURVEY OFFICE

PERSONNEL

REFERENCE NO. 18

SHEET ___ OF ___

NOTES Cranin Homer

H.C. Rippte Arms

R.G. Barbour Hooker

Gegman

DATE 9/14/07 4-26-04

WEATHER sunny

TEMP. 65° 60°

ROUTE #635

COUNTY Senecas

TOWNSHIP Liberty

SECTION #5

T3 N R 14 E

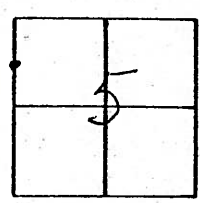
TYPE MONUMENT P.K. washer

ON SURFACE - BELOW on surface

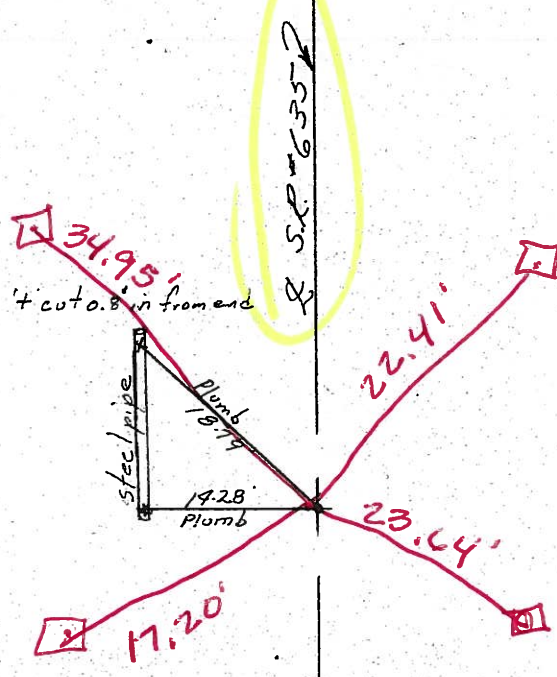
LEFT - CL PAW'T. - RIGHT to Pavt

9.2' TO CL EDGE PAVEMENT

S.L.M. _____



Hub & Tack
Set
at 4
Locations



set P.K. washer at top
same at top R.R. spike
atop iron pipe

O.D.O.T. DISTRICT 2 SURVEY OFFICE

PERSONNEL

REFERENCE NO. 18

SHEET OF

NOTES Cronin

H.C. Ripple

R.C. Barbour

Coeyman

DATE 9/14/87

WEATHER sunny

TEMP. 65°

ROUTE #635

COUNTY Senecas

TOWNSHIP Liberty

SECTION #5

T 3 N R 14 E

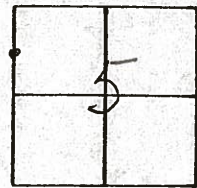
TYPE MONUMENT P.K. washer

ON SURFACE - BELOW on surface

LEFT - ☉ PAV'T. - RIGHT ☉ Pav't

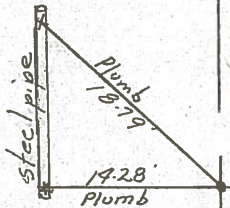
 TO EDGE PAVEMENT

S.L.M.



S.P. #635

4' cut 0.8' in from end



set P.K. washer a top
same a top R.R. spike
a top iron pipe

O.D.O.T. DISTRICT 2 SURVEY OFFICE

PERSONNEL _____

REFERENCE NO. 18

SHEET 14 OF 15

NOTES Cronin

DRAWN 6/25/86

H.C. Ripple

DATE 6/20/86

R.C. _____

WEATHER sunny

TEMP. 70°

ROUTE #635

COUNTY Seneca

TOWNSHIP Liberty

SECTION 5E6

T. 3 N R. 14 E

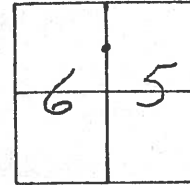
TYPE MONUMENT PKE washer

ON SURFACE - BELOW on surface

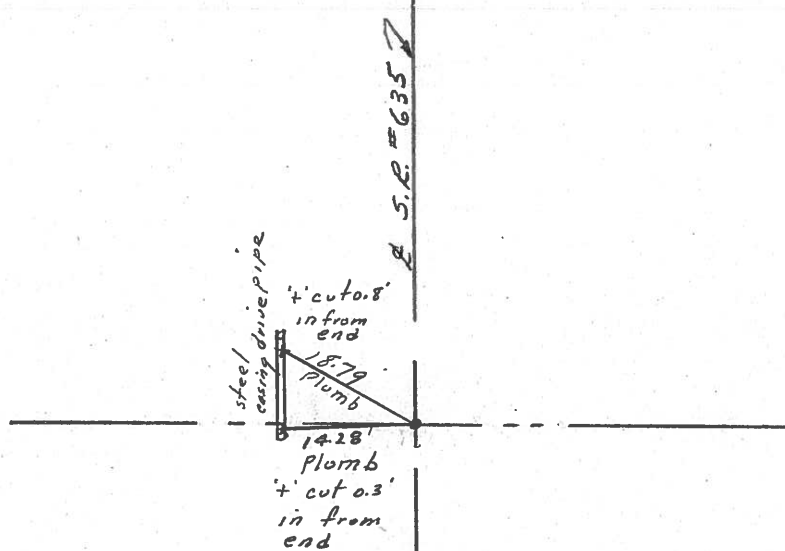
LEFT - & PAV'T. - RIGHT L.P.V.T.

TO _____ EDGE PAVEMENT

S.L.M. 8.316 ±



R.R. spike at top
I. Pipe 2" below
surface
1/16 Post



PERSONNEL TITLE PERSONNEL TITLE

GROUN

COUNTY SENECA

DATE July 1971

S. R. #635

WEATHER

SEC.

TEMP.

DESCRIPTION TIES FOR CONTROL POINTS

JOB NO.

LEFT

CENTER LINE

RIGHT

