

O.D.O.T. DISTRICT 2 SURVEY OFFICE (USE ONLY)

PERSONNEL _____ REFERENCE NO. 19 SHEET 8 OF 8

NOTES NUHFER DATE 4/28/04 ROUTE SR 635

H.C. HOOKE WEATHER CLOUDY COUNTY SENECA

R.C. HOMAN TEMP. 50° TOWNSHIP LIBERTY

ARMS SECTION 5

T 3 N R 14 E

TYPE MONUMENT MONBOX

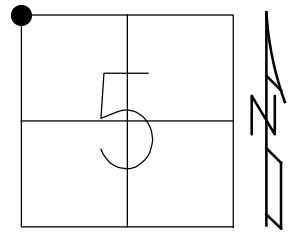
ON SURFACE - ~~BELOW~~ ON _____

~~LEFT - C PAV'T~~ - RIGHT 2'

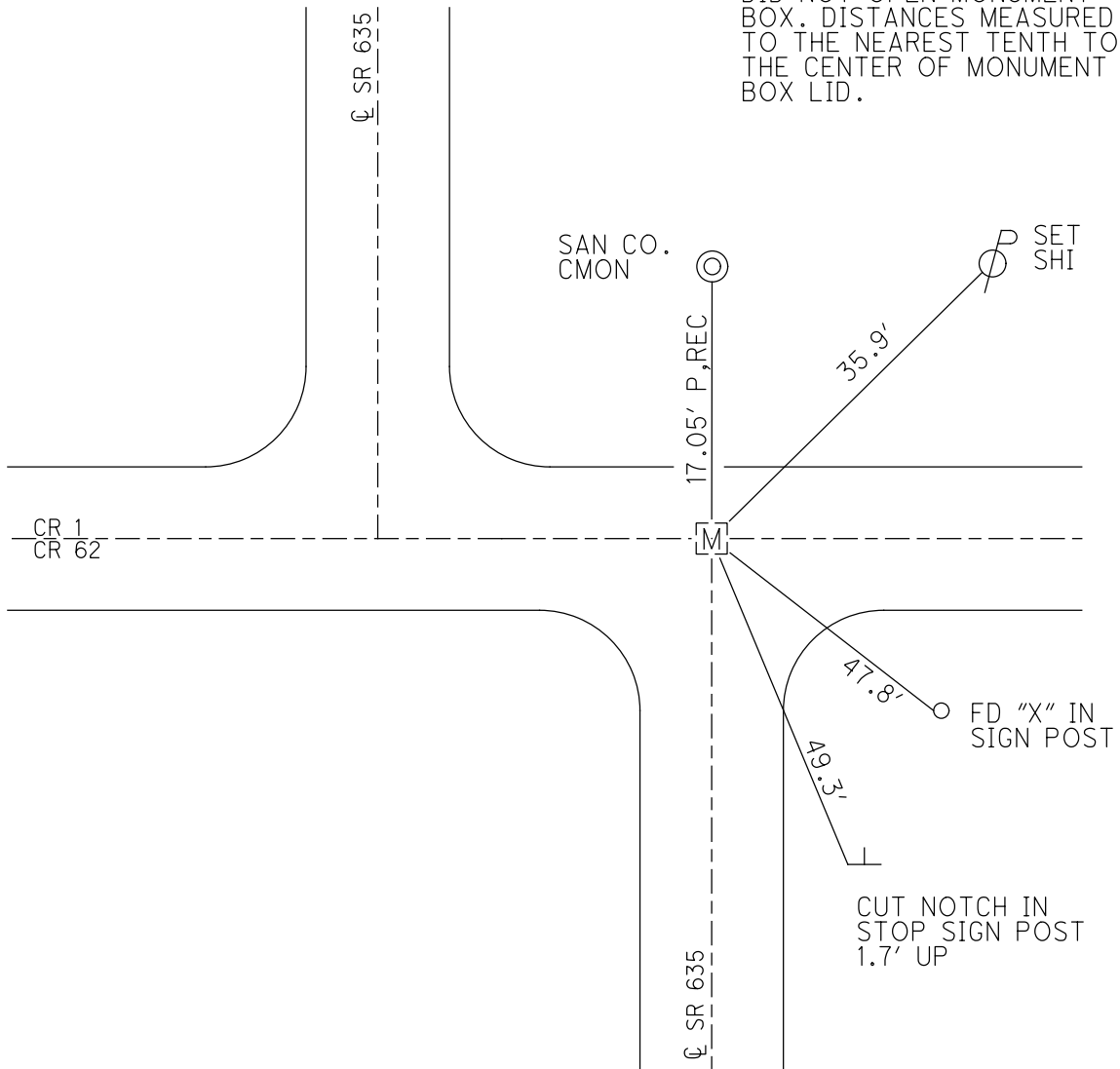
- TO - EDGE PAVEMENT

S.L.M. 460+20

GRID: NORTHING: _____ EASTING: _____



DID NOT OPEN MONUMENT BOX. DISTANCES MEASURED TO THE NEAREST TENTH TO THE CENTER OF MONUMENT BOX LID.



O.D.O.T. DISTRICT 2 SURVEY OFFICE

PERSONNEL

REFERENCE NO. 19

SHEET _____ OF _____

NOTES Cronin R.N

H.C. Ripple S. Hoxter

R.G. Barbour Putman

Geyman

J. aems

DATE 4/28/04
9/14/07

WEATHER sunny / oldy

TEMP. 68° 50° W. 100°

ROUTE 635

COUNTY Seneca

TOWNSHIP Liberty

SECTION 5

T3 N R14 E

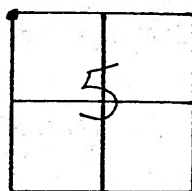
TYPE MONUMENT P.K. Washer Rd Mon Box

ON SURFACE - BELOW on surface

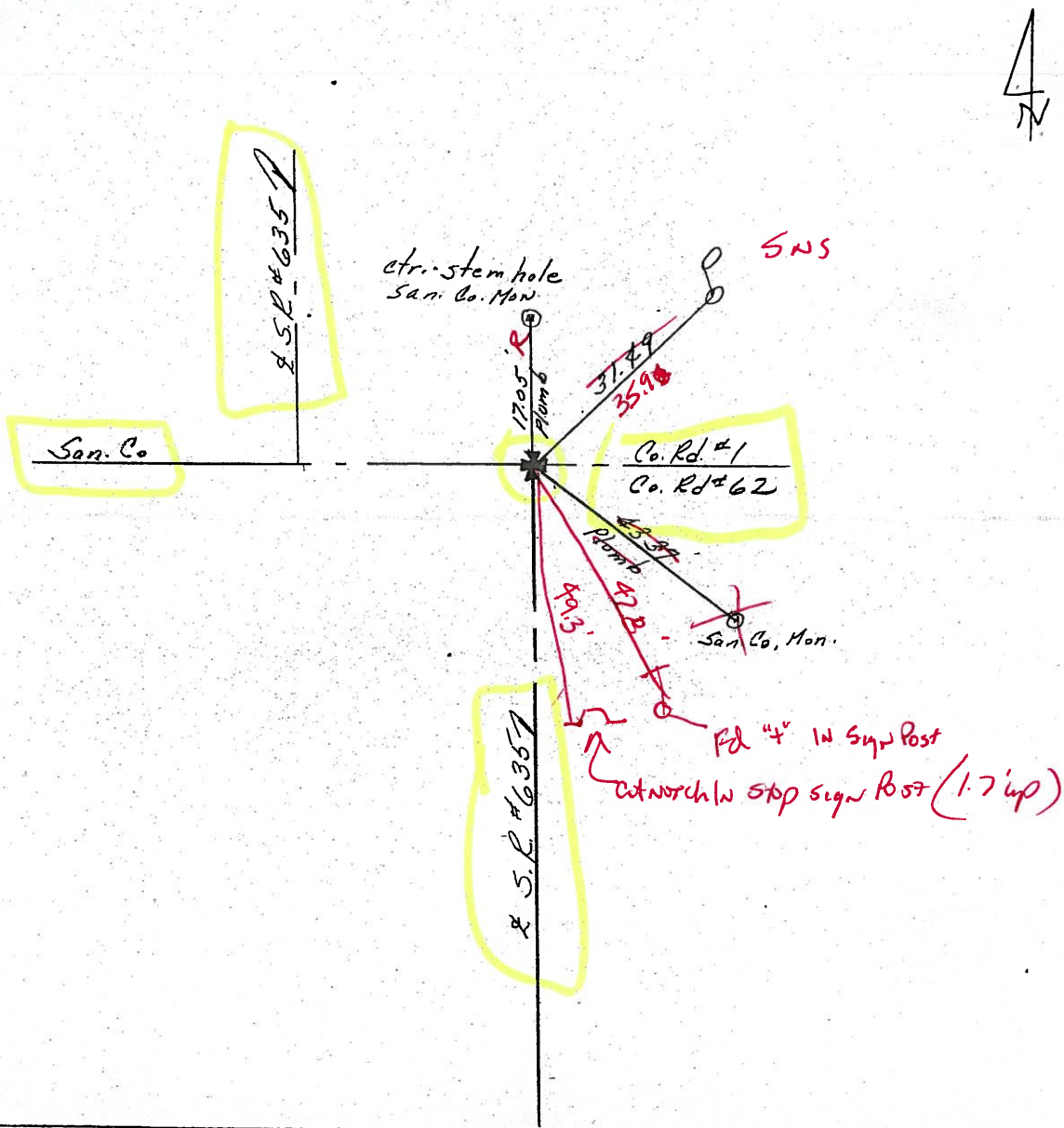
LEFT - € PAV'T. - RIGHT 2' ± Rt. & Pavt.

TO _____ EDGE PAVEMENT

S.L.M. _____



Used € mon Box - Distance to 0.10



O.D.O.T. DISTRICT 2 SURVEY OFFICE

PERSONNEL _____

REFERENCE NO. 19

SHEET _____ OF _____

NOTES Cronin

H.C. Ripple

R.C. Barbour

Geyman

DATE 9/14/87

WEATHER sunny

TEMP. 65°

ROUTE 635

COUNTY Seneca

TOWNSHIP Liberty

SECTION 5

T3 N R14 E

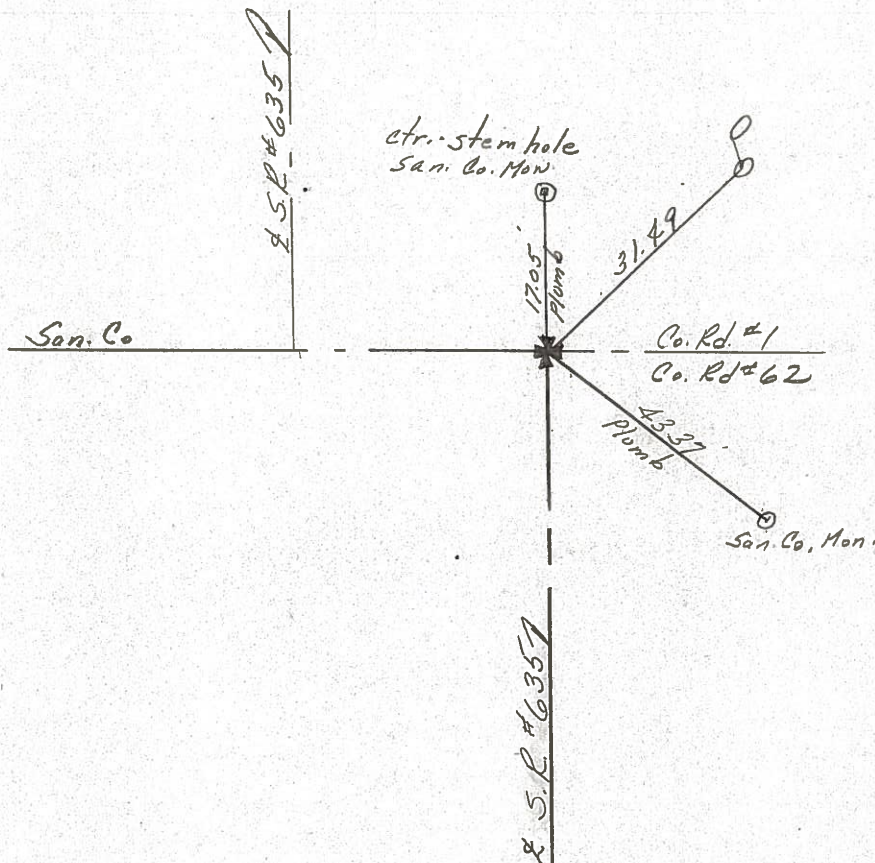
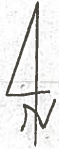
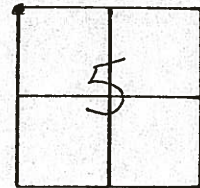
TYPE MONUMENT P.K. & washer

ON SURFACE - BELOW on surface

LEFT - € PAV'T. - RIGHT 2' ± Rt & Pavt.

TO _____ EDGE PAVEMENT

S.L.M. _____



O.D.O.T. DISTRICT 2 SURVEY OFFICE

PERSONNEL _____

REFERENCE NO. _____

SHEET _____ OF _____

NOTES Cronin

H.C. Ripple

R.G. Barbour

Geyman

DATE 9/14/87

WEATHER sunny

TEMP. 65°

ROUTE #635

COUNTY Seneca

TOWNSHIP Jackson

SECTION 32

T 4 N R 14 E

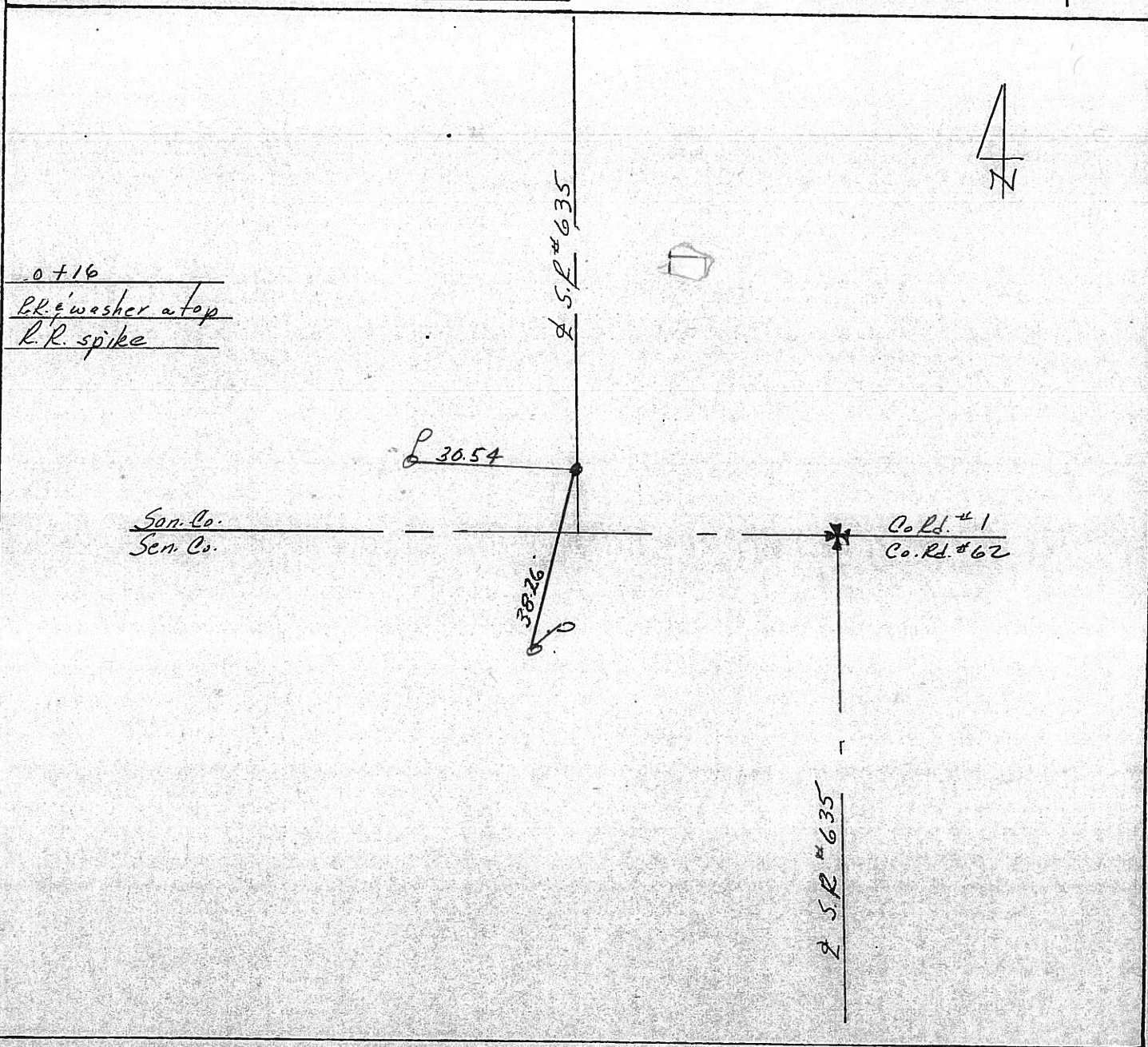
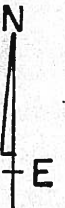
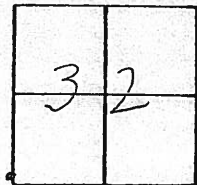
TYPE MONUMENT P.R. & washer

ON SURFACE - BELOW on surface

LEFT - & PAV'T. - RIGHT 2 ± Lt. & Pav't.

TO _____ EDGE PAVEMENT

S.L.M. _____



O.D.O.T. DISTRICT 2 SURVEY OFFICE

PERSONNEL

NOTES

H.C.

R.C.

REFERENCE NO. 19

DRAWN 6/25/86

DATE 6/20/86

WEATHER sunny

TEMP. 73°

SHEET 15 OF 15

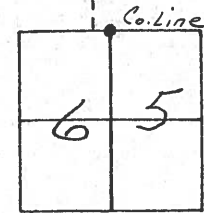
ROUTE #635

COUNTY Seneca

TOWNSHIP Liberty

SECTION 5 & 6

T 3 N R 14 E



TYPE MONUMENT P.K. Washer

ON SURFACE - BELOW on surface

LEFT- & PAV'T. - RIGHT & P.V.T.

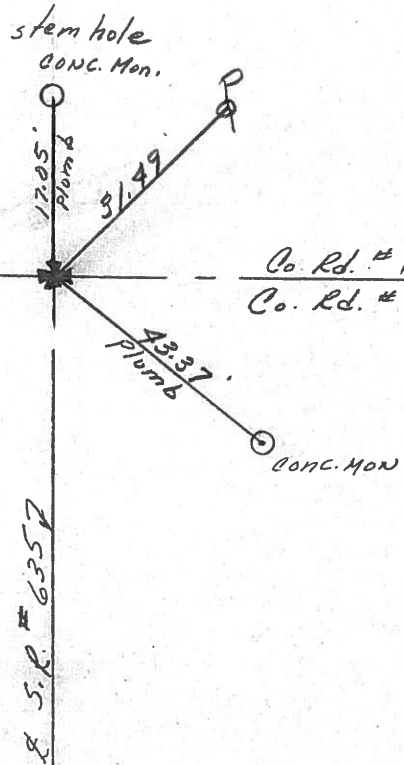
TO EDGE PAVEMENT

S.L.M. 8.61±

stone below surface

Sandusky Co.
Seneca Co.

Co. Rd. #1
Co. Rd. #62



PERSONNEL TITLE PERSONNEL TITLE

CROBIN

COUNTY Seneca

DATE 11-20-73

S. R. 635

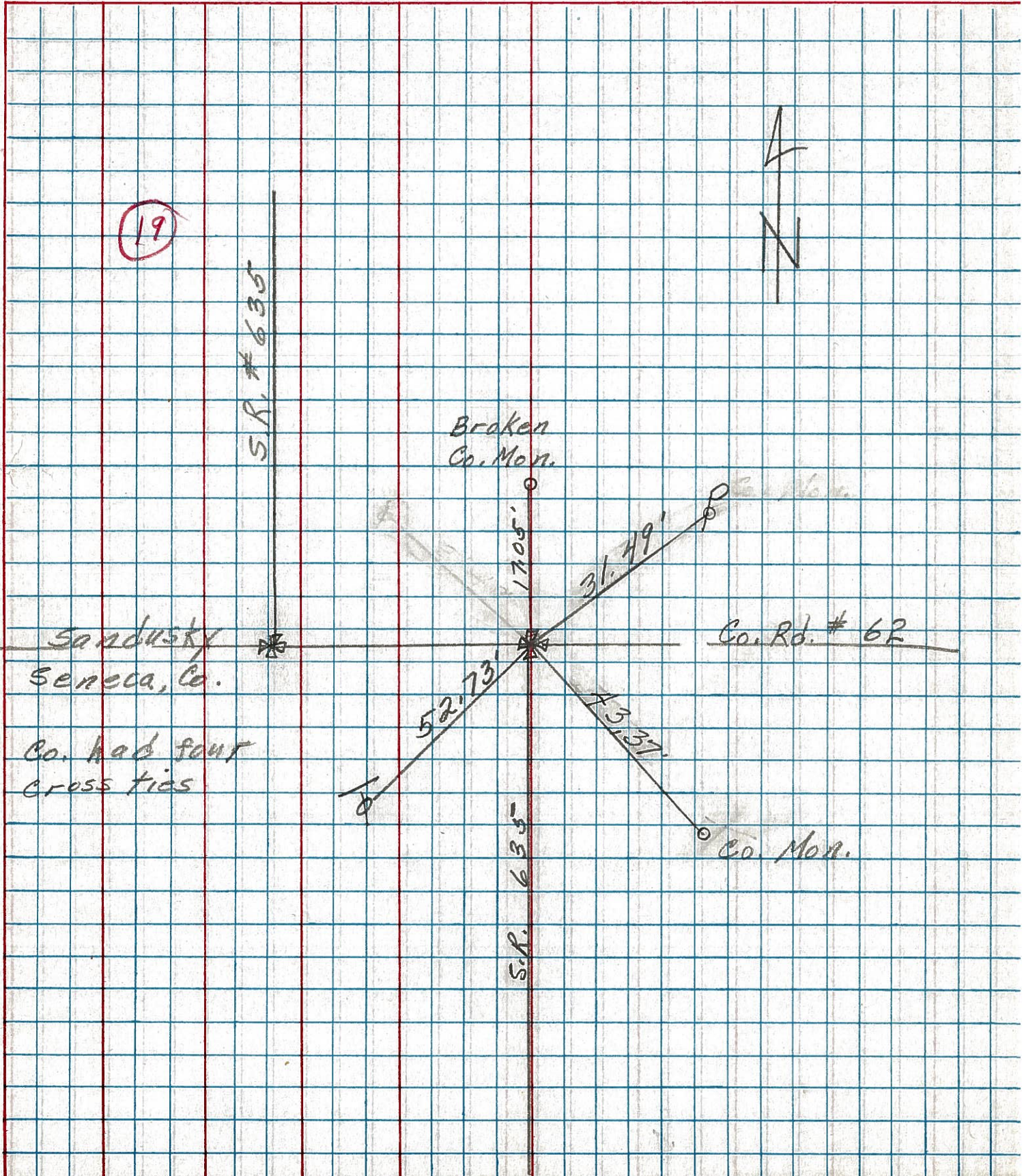
WEATHER

SEC. San-Sen-Co Line TEMP.

DESCRIPTION San-Sen-Co Line

JOB NO.

LEFT CENTER LINE RIGHT



Sandusky Seneca, Co.

Broken Co. Mon.

Co. Rd. # 6R

Co. had four cross ties

S.R. 635

Co. Mon.

19

S.R. # 635

52.73'

1705'

31.49'

43.37'