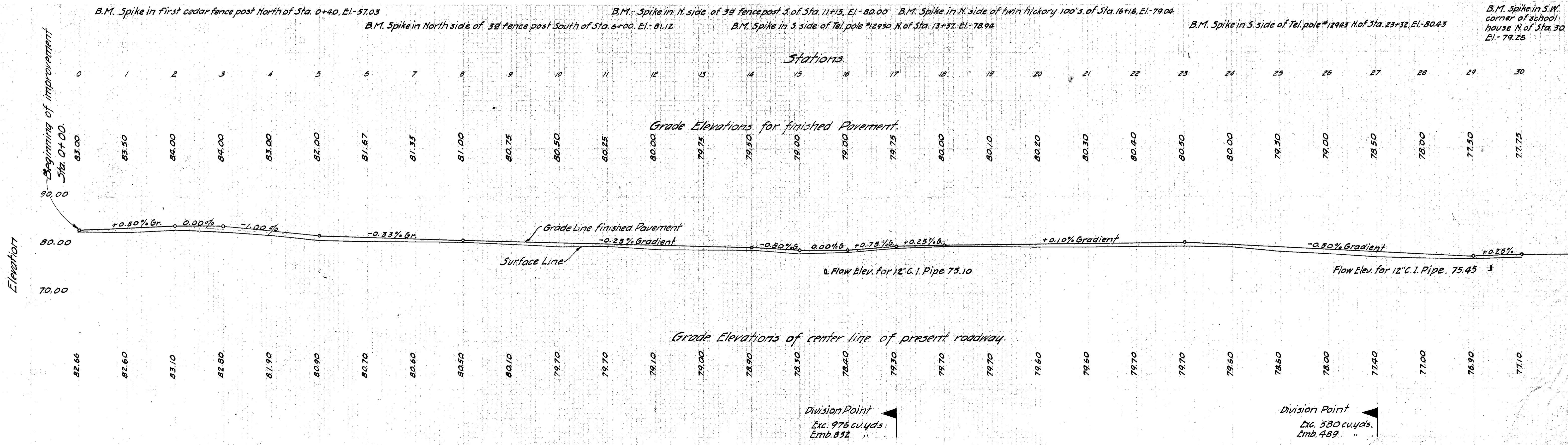
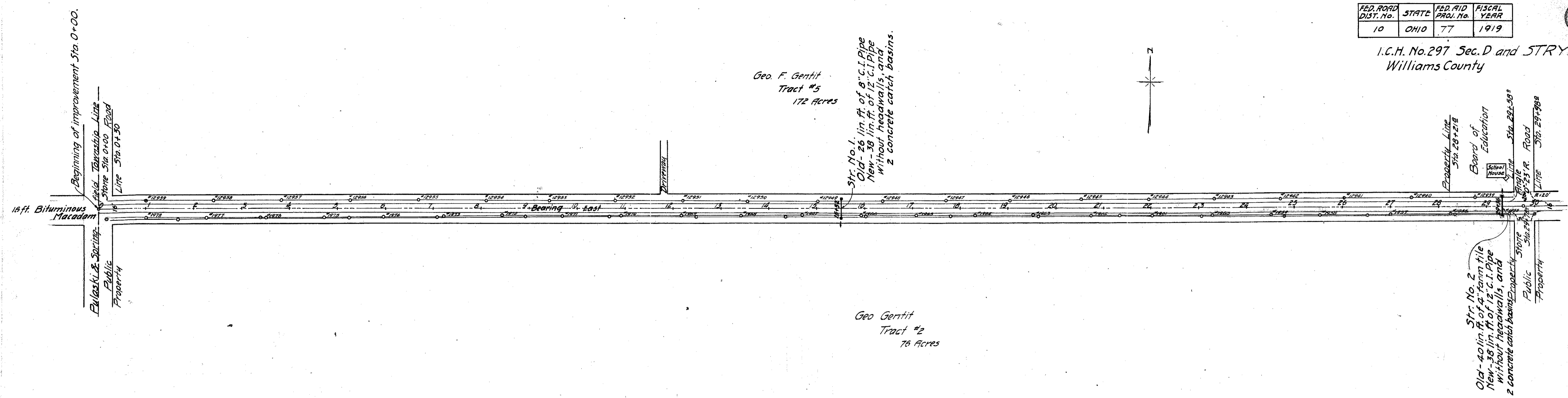


FED. ROAD DIST. No.	STATE	FED. AID PROJ. No.	FISCAL YEAR
10	OHIO	77	1919

I.C.H. No. 297 Sec. D and STRYKER.
Williams County



B.M. Spike in first cedar fence post North of Sta. 0+40, El-57.03

B.M. Spike in North side of 3d fence post South of Sta. 6+00, El-81.12

B.M. Spike in N. side of 3d fence post S. of Sta. 11+15, El-80.00

B.M. Spike in S. side of Tel. pole #12950 N. of Sta. 13+37, El-78.92

B.M. Spike in N. side of twin hickory 100's of Sta. 16+16, El-79.02

B.M. Spike in S. side of Tel. pole #12943 N. of Sta. 23+32, El-80.43

B.M. Spike in S.W. corner of school house N. of Sta. 30 El-79.25

Stations

Grade Elevations for finished Pavement.

Grade Elevations of center line of present roadway.

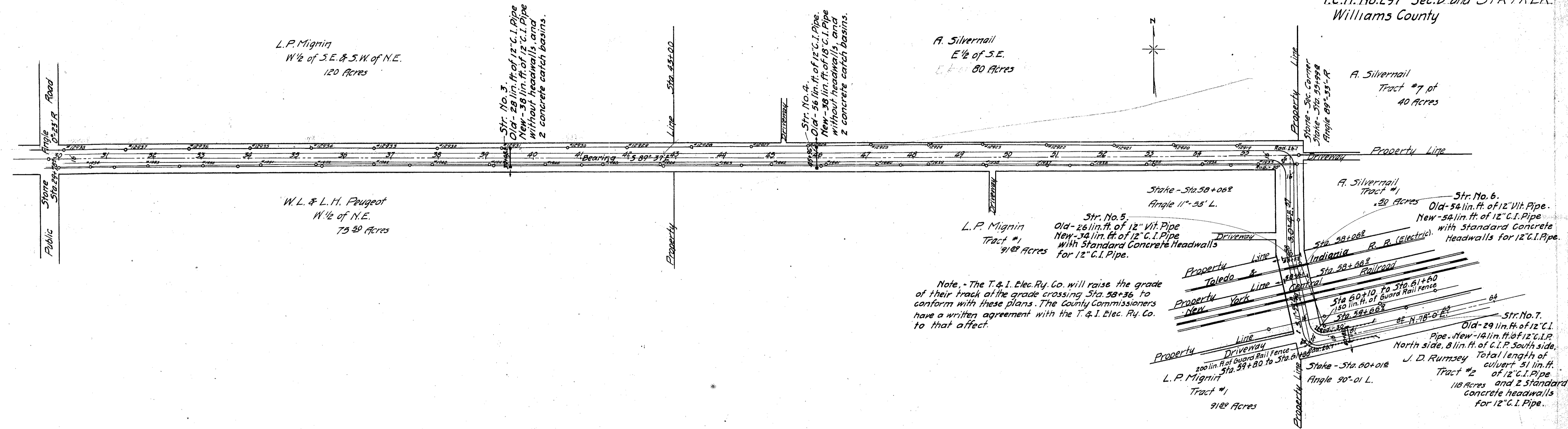
Division Point
Exc. 976 cu.yds.
Emb. 852 "

Division Point
Exc. 580 cu.yds.
Emb. 489 "

FED. ROAD DIST. No.	STATE	FED. AID PROJ. No.	FISCAL YEAR
10	OHIO	77	1919

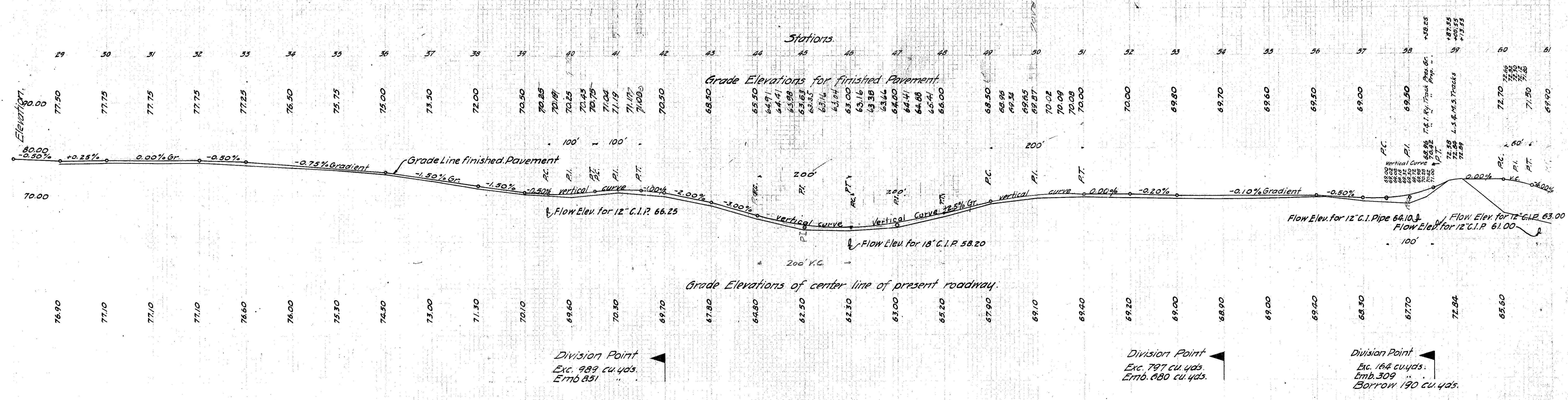
4
18

I.C.H. No. 297 Sec. D. and STRYKER
Williams County



Note: - The T. & I. Elec. Ry. Co. will raise the grade of their track at the grade crossing Sta. 58+36 to conform with these plans. The County Commissioners have a written agreement with the T. & I. Elec. Ry. Co. to that effect.

B.M. Spike in S. side of 18" Sugar N. of Sta. 30+50, El. 77.56
 B.M. Spike in S. side of Tel. Pole #12932 N. of Sta. 38+00, El. 71.47
 B.M. Spike in N. side of Tel. pole #1940 S. of Sta. 47+28, El. 63.61
 B.M. Spike in N. side of 30" W. cherry 75' S. of Sta. 34+75, El. 76.60
 B.M. Spike in S. side of 4th fence post S. of Sta. 43+00, El. 67.18
 B.M. Spike in trolley pole west of Sta. 58+30, El. 68.33



Division Point
Exc. 989 cu. yds.
Emb. 831

Division Point
Exc. 797 cu. yds.
Emb. 680 cu. yds.

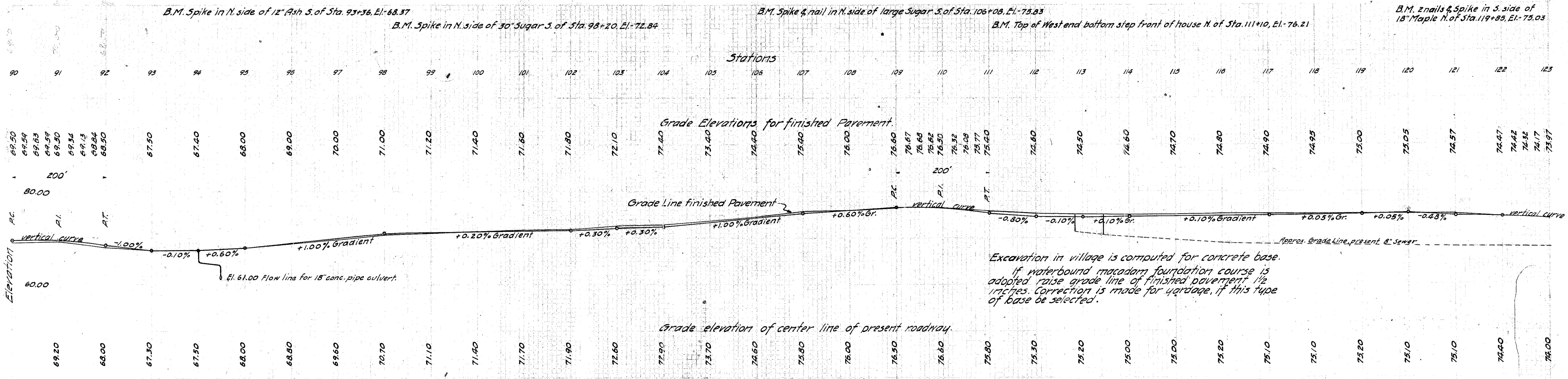
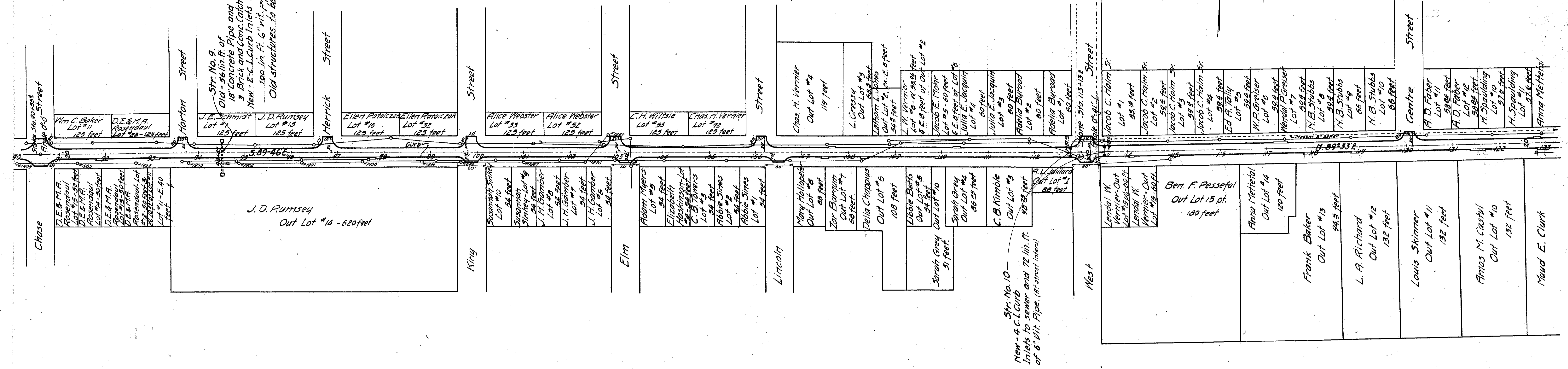
Division Point
Exc. 164 cu. yds.
Emb. 309
Borrow 190 cu. yds.

FOR ANY QUESTIONS PLEASE CONTACT ODOT DISTRICT 2 REAL ESTATE AT 419-353-8131

FED. ROAD DIST. No.	STATE	FED. AID PROJ. No.	FISCAL YEAR
10	OHIO	77	1919

6
18

I.C.H. No. 297 Sec. STRYKER
Williams County

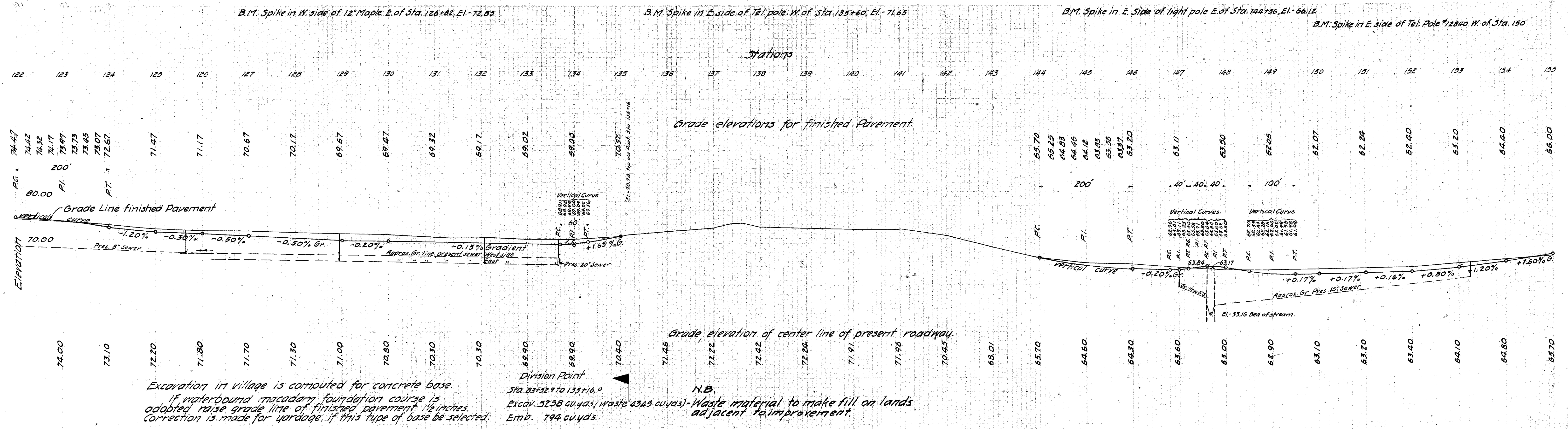
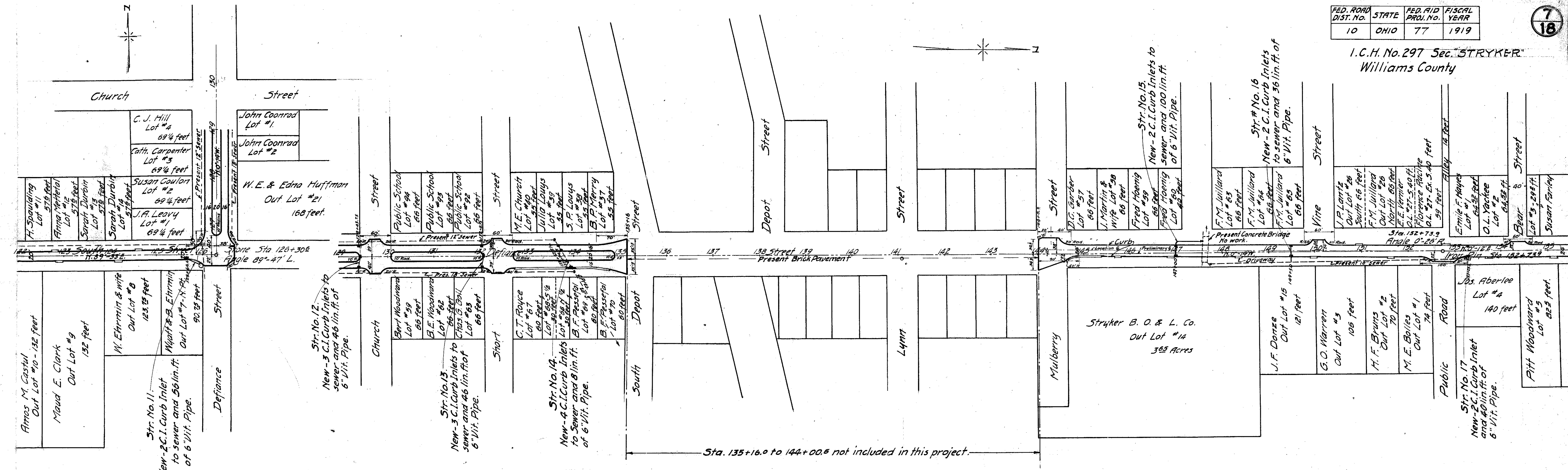


Excavation in village is computed for concrete base. If waterbound macadam foundation course is adopted raise grade line of finished pavement 1/2 inches. Correction is made for yardage, if this type of base be selected.

FOR ANY QUESTIONS PLEASE CONTACT ODOT DISTRICT 2 REAL ESTATE AT 419-353-8131

FED. ROAD DIST. NO.	STATE	FED. AID PROJ. NO.	FISCAL YEAR
10	OHIO	77	1919

I.C.H. No. 297 Sec. STRYKER
Williams County



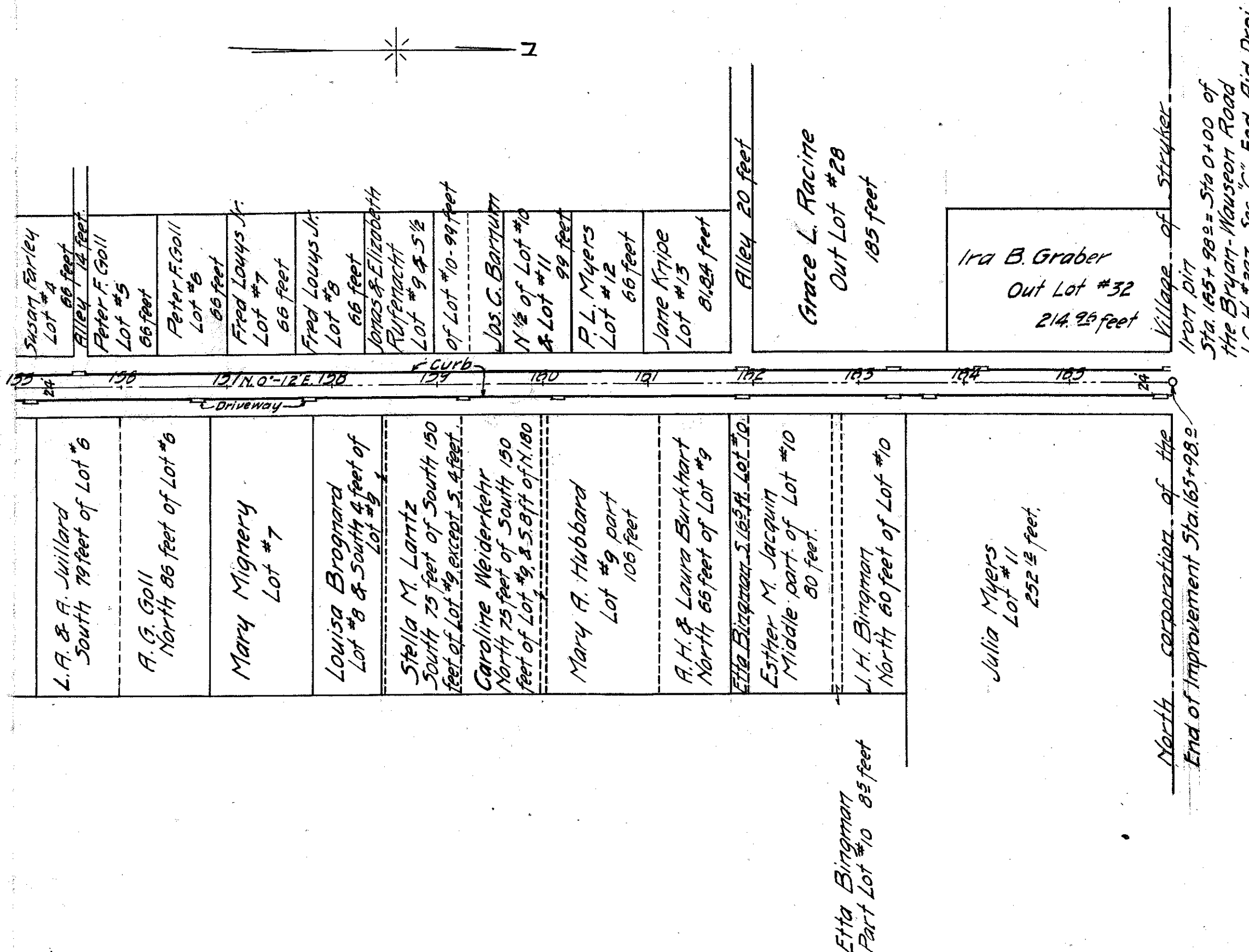
Excavation in village is computed for concrete base. If waterbound macadam foundation course is adopted raise grade line of finished pavement 1/2 inches. Correction is made for yardage, if this type of base be selected.

Division Point
Sta. 83+52.9 to 135+16.0
Excav. 52.58 cu yds. (waste 43.65 cu yds.)
Emb. 794 cu yds.

N.B. Waste material to make fill on lands adjacent to improvement.

FED. ROAD DIST. No.	STATE	FED. AID PROJ. No.	FISCAL YEAR
10	OHIO	77	1919

I.C.H. No. 297 Sec. "STRYKER"
Williams County

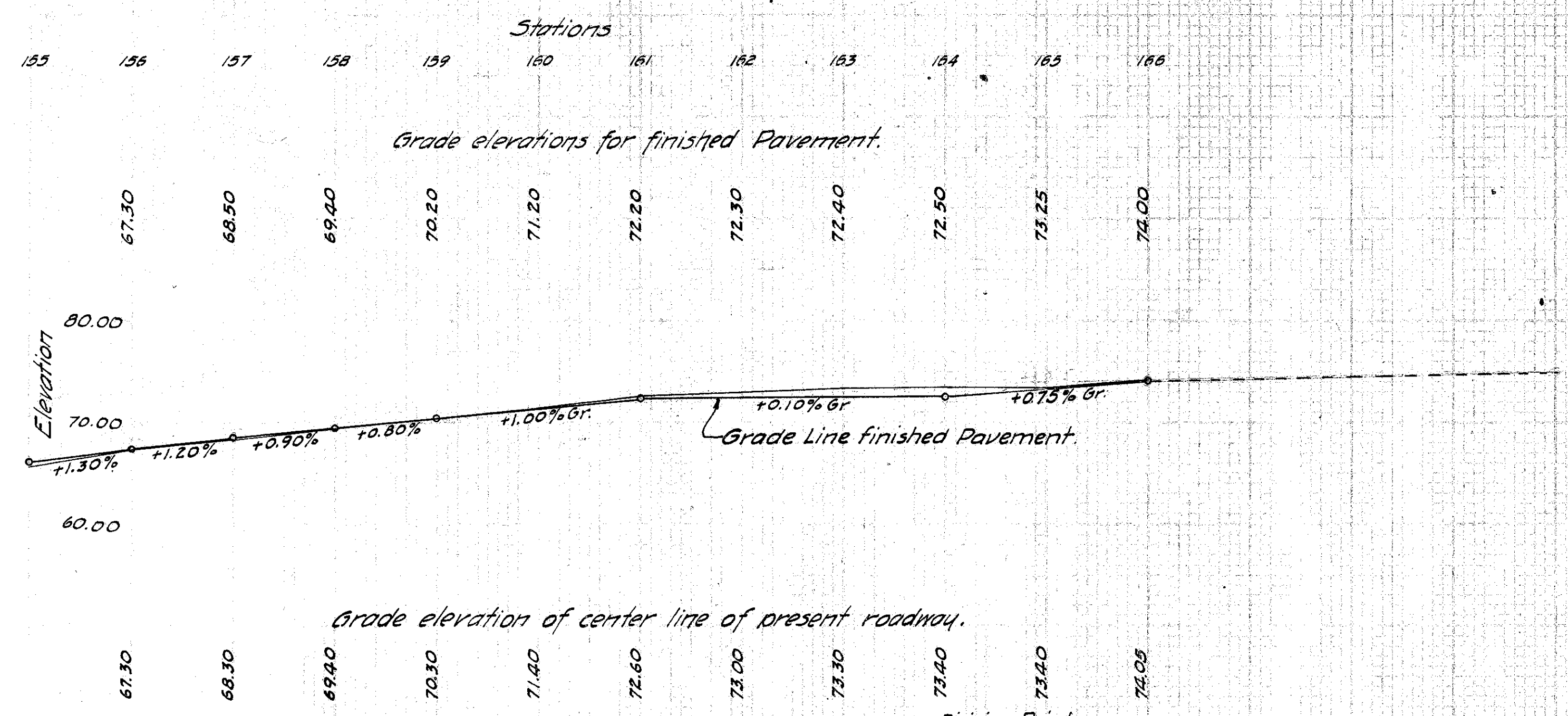


from plat Sta. 165+98.2 = Sta. 0+00 of the Bryan, Mausegar Road I.C.H. #297 Sec. C. Fed. Aid Proj. No. 13.

North continuation of the End of Improvement Sta. 165+98.2

B.M. Spike in E. side of Tel. Pole #12836 N. of Sta. 155+70, El. 69.16

B.M. Spike in E. side of 16" Sugar 50' W. of Sta. 165+00, El. 73.70
B.M. Spike in NW side of 30" Sugar NE of Sta. 165+98, El. 75.00



Excavation in village is computed for concrete base.
If waterbound macadam foundation course is adopted, raise grade line of finished pavement 1/2 inches. Correction is made for yardage, if this type of base is selected.
H.B. Waste material to make fill on lands adjacent to improvement.

Division Point
Sta. 144+00.6 to 165+98.0
Excav. 2504 cu. yds.
(Waste 2504 cu. yds.)