

A7003

FED. RD. DIVISION	STATE	PROJECT	FISCAL YEAR
2	OHIO		1948

WILLIAMS COUNTY  
 WIL-2-(12.95)(13.29)  
 WIL-191-7.47

# STATE OF OHIO DEPARTMENT OF HIGHWAYS

WIL-2-(12.95)(13.29)  
 WIL-191-7.47  
 WILLIAMS COUNTY  
 VILLAGE OF STRYKER

END PROJECT  
 Sta. 723+33.65

**CONVENTIONAL SIGNS**

COUNTY LINE	-----
TOWNSHIP LINE	-----
SECTION LINE	-----
CORPORATION LINE	-----
FENCE LINE	-x-x-x-x-
CENTER LINE	-----
POLE LINE	o o o o o
STEAM RAILROAD	-----
GUARD RAIL	o o o o o
DRAIN PIPE (NEW)	-----
DRAIN PIPE (OLD)	-----

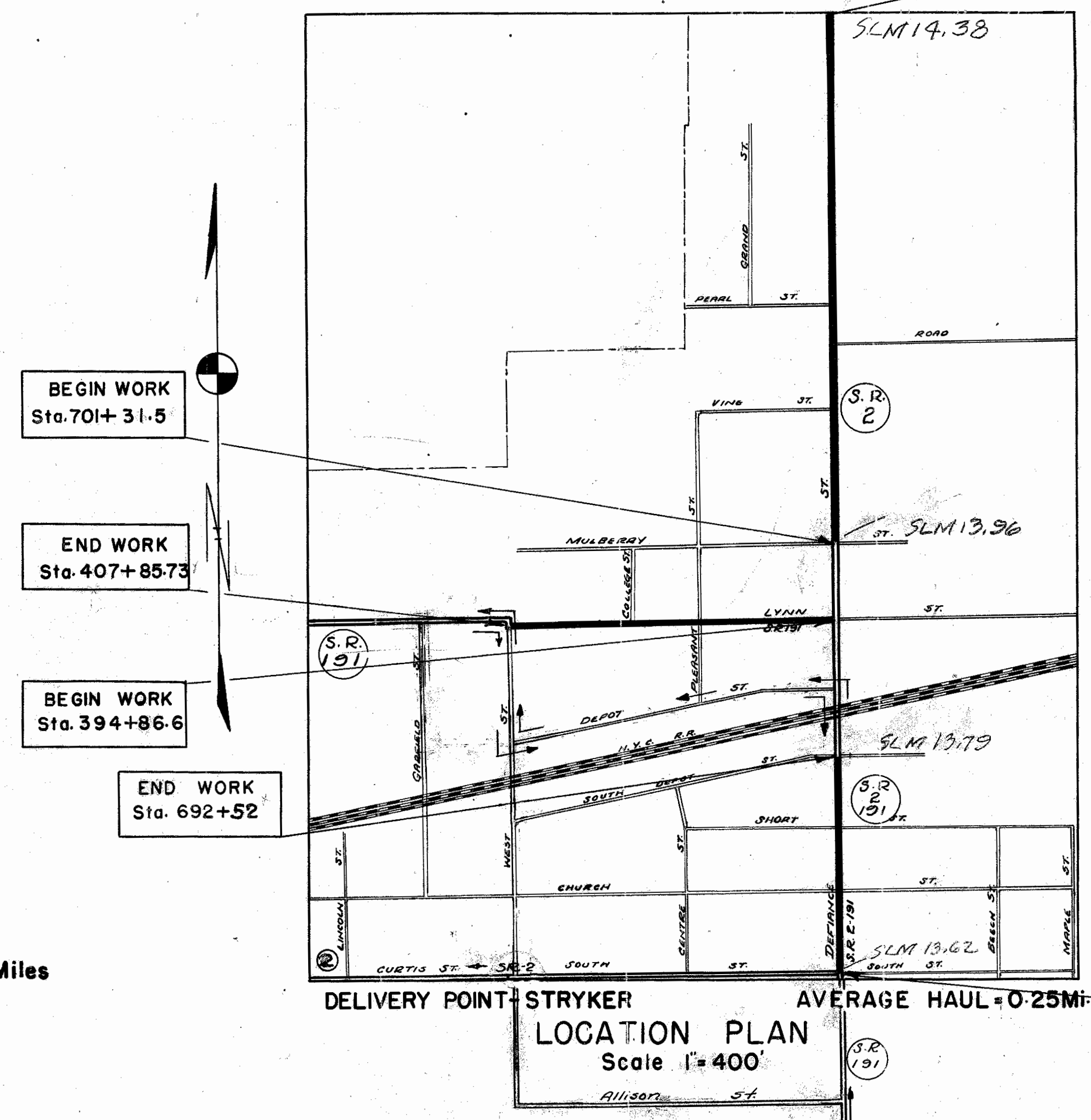
**INDEX OF SHEETS**

TITLE SHEET	1
TYPICAL SECTION	2
PAVEMENT COMPUTATIONS	3
GENERAL NOTES & SUMMARY	3
SUB-SUMMARIES	4
SUB-SUMMARIES & DETAILS	5
PLAN AND PROFILE SHEETS	6-7-8-9
CROSS SECTIONS	10-11

**LINE DATA**

Begin Project and Work at South and Defiance St. Sta. 683+66  
 End Work on Defiance St. Sta. 692+52  
 Begin Work on Defiance St. Sta. 701+31.5  
 End Project and Work Sta. 723+33.65  
 Net Length of Work on Defiance St. = 686+220.15 = 3088.15 Lin. Ft.

Begin Work on Lynn St. Sta. 394+86.6  
 End Work on Lynn St. Sta. 407+85.73  
 Length of Work on Lynn St. = 1299.13 Lin. Ft. (No deductions)  
 Net Length of Project = 3088.15 + 1299.13 = 4387.28 Lin. Ft. or .830 Miles



The Standard Specifications of the State of Ohio, Department of Highways, including changes and Supplemental Specification listed in the proposal shall govern this improvement.

The right of way necessary for this improvement will be provided by the State of Ohio.

I hereby approve these plans and declare that the making of this improvement will require the closing of traffic on Lynn St. and that detour will be provided as shown on plans during this phase of construction. Traffic will otherwise be maintained as specified on Sheet 3.

Approved George W. Hahn  
 Date 2-17-49 Division Deputy Director

Approved \_\_\_\_\_  
 Date \_\_\_\_\_ Chief Engineer, Bureau of Maintenance

Approved Richard Outh  
 Date 2-15-49 Chief Engineer, Bureau of Bridges & R.R. Crossings

Approved George J. Tharmyer  
 Date 2/17/49 Act. Chief Engineer, Bureau of Location & Design

Approved J. J. Angel  
 Date 2/17/49 First Asst. Director & Chief Engineer

Approved W. H. Miller  
 Date 2/17/49 Director of Highways

CONSTRUCTION BUREAU  
 JUL 21 1955  
 GROUND PHOTOLAB



**SCALES**

PLAN	1" = 50'
PROFILE HORIZONTAL	1" = 50'
PROFILE VERTICAL	1" = 5'
CROSS SECTIONS	1" = 5'

SUPPLEMENTAL SPECIFICATIONS

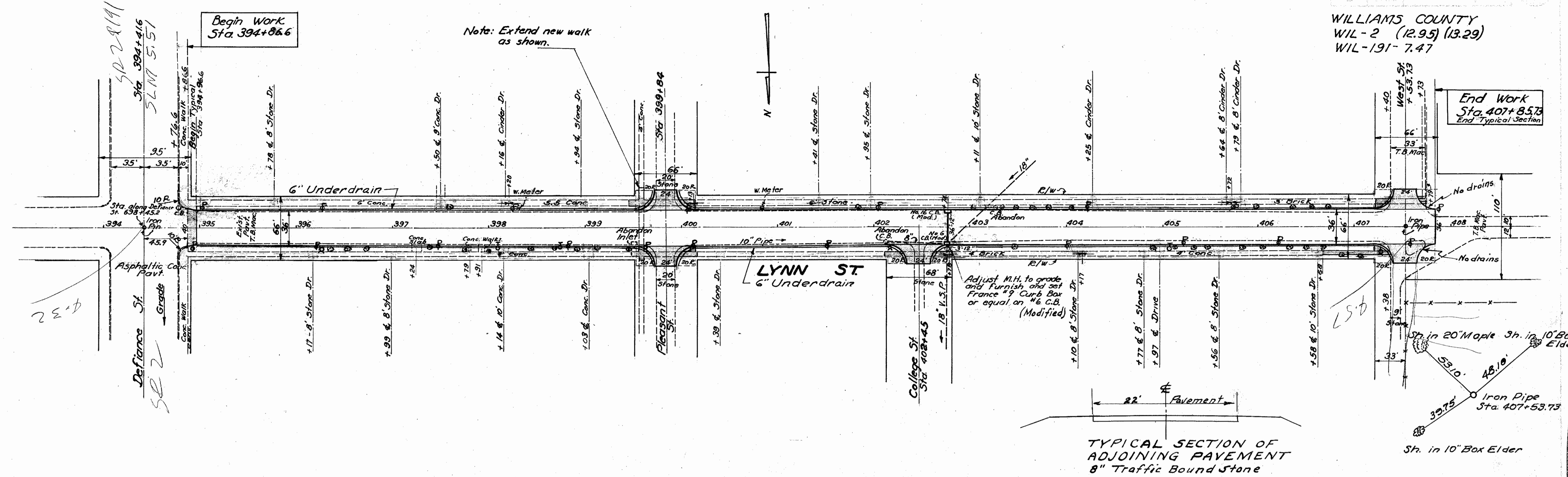
STANDARD	DRAWINGS
I-8 M.H. No. 1	5-1-47
I-8 C.B. No. 6	12-15-47 L-3 2-1-47
I-8 C.B. No. 16	3-1-47
S-27 P.C. 3	2-20-45
I-12	3-15-48
G-8.07	2-1-47
I-1,2,3,4,5	2-20-48

FILE NO.	WILLIAMS COUNTY	WIL-2-(12.95)(13.29)
	DATE OF LETTING	WIL-191-7.47
	CONTRACT NO.	

382



WILLIAMS COUNTY  
WIL-2 (12.95) (13.29)  
WIL-191-7.47



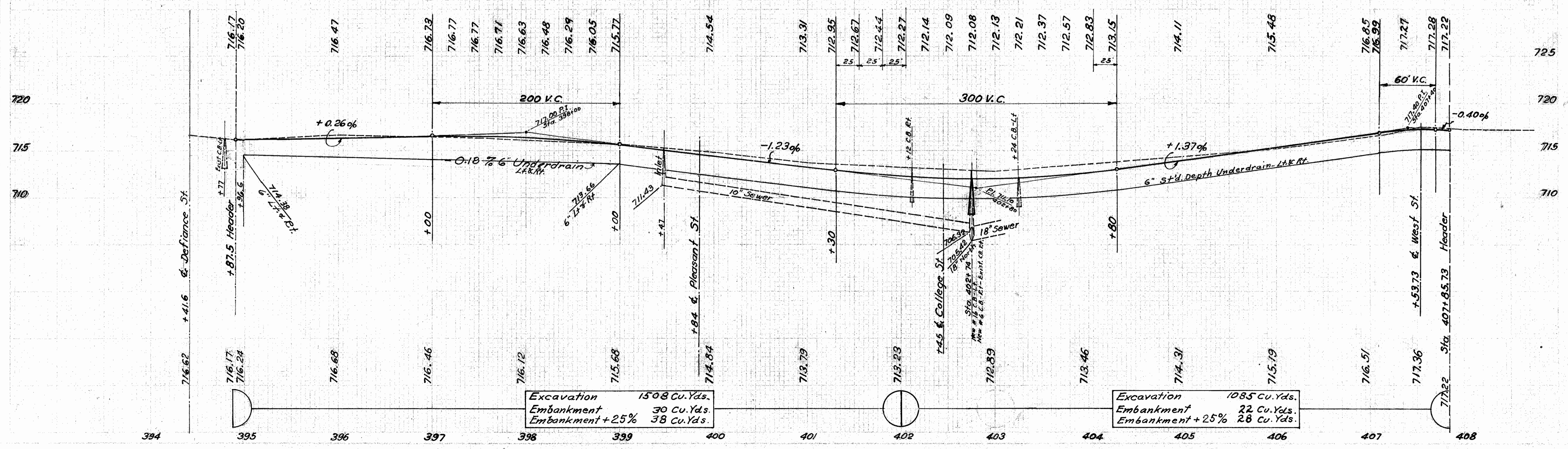
TYPICAL SECTION OF ADJOINING PAVEMENT  
8" Traffic Bound Stone

B.M. x N. Door Entrance to Brick Store Rt.  
200' N. of R.R. - Defiance St.  
El. 717.81

B.M. x N.E. Cor. Conc. Lower Step to House Lt.  
Sta. 397+30  
El. 717.80

B.M. E. Bolt Hyd. Rt.  
Sta. 401+17  
El. 714.92

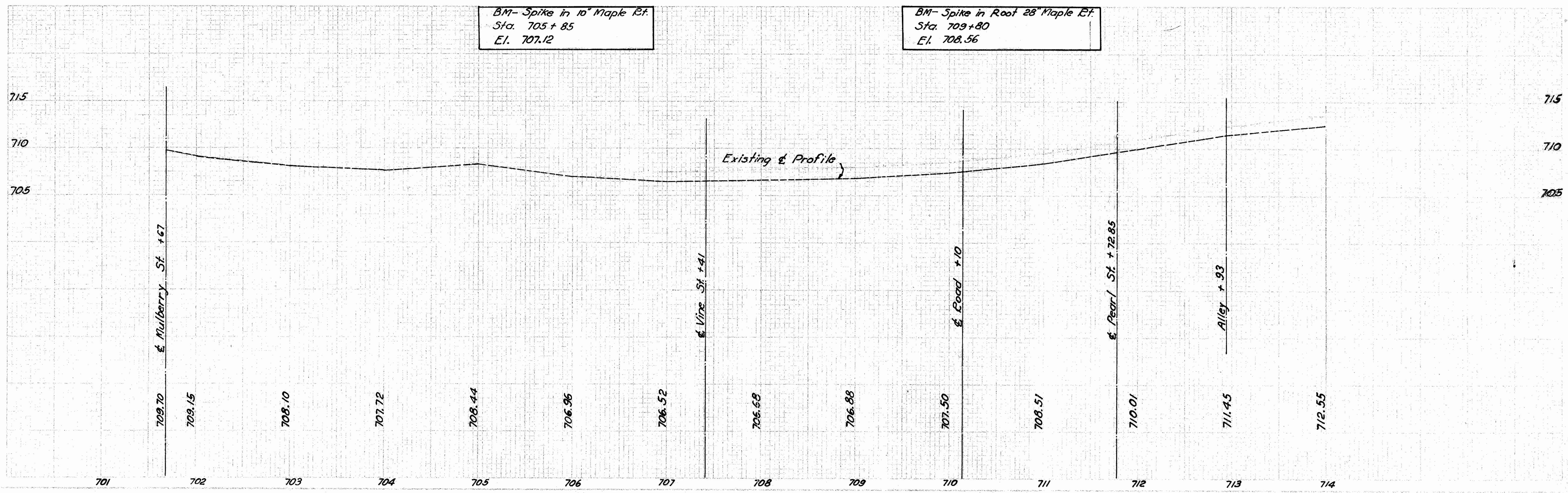
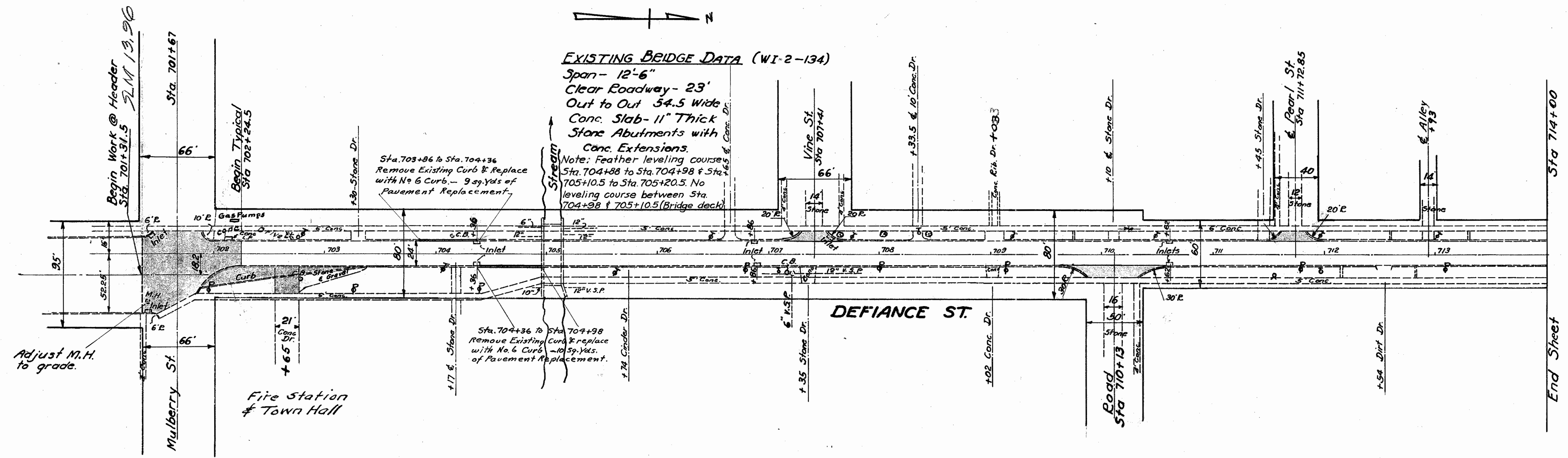
B.M. Nail in 10" Maple Rt.  
Sta. 406+66  
El. 715.60



Excavation 1508 Cu.Yds.  
Embankment 30 Cu.Yds.  
Embankment + 25% 38 Cu.Yds.

Excavation 1085 Cu.Yds.  
Embankment 22 Cu.Yds.  
Embankment + 25% 28 Cu.Yds.

WILLIAMS COUNTY  
 WIL-2 (12.95) (13.29)  
 WIL-191-7.47



WILLIAMS COUNTY  
WIL-2 (12.95) (13.29)  
WIL-191-7.47

