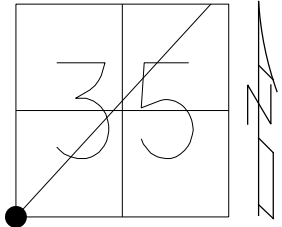


O.D.O.T. DISTRICT 2 SURVEY OFFICE (USE ONLY)

PERSONNEL _____ REFERENCE NO. 1 A SHEET 2 OF 8
 NOTES RHOADES DATE 8/4/16 ROUTE SR 2
 H.C. O'DONNELL WEATHER FAIR COUNTY WILLIAMS
 R.C. RHOADES TEMP. 80° TOWNSHIP CENTER
 SECTION 35
 DWG BY RHOADES PID 85269 T 6 N R 2 E

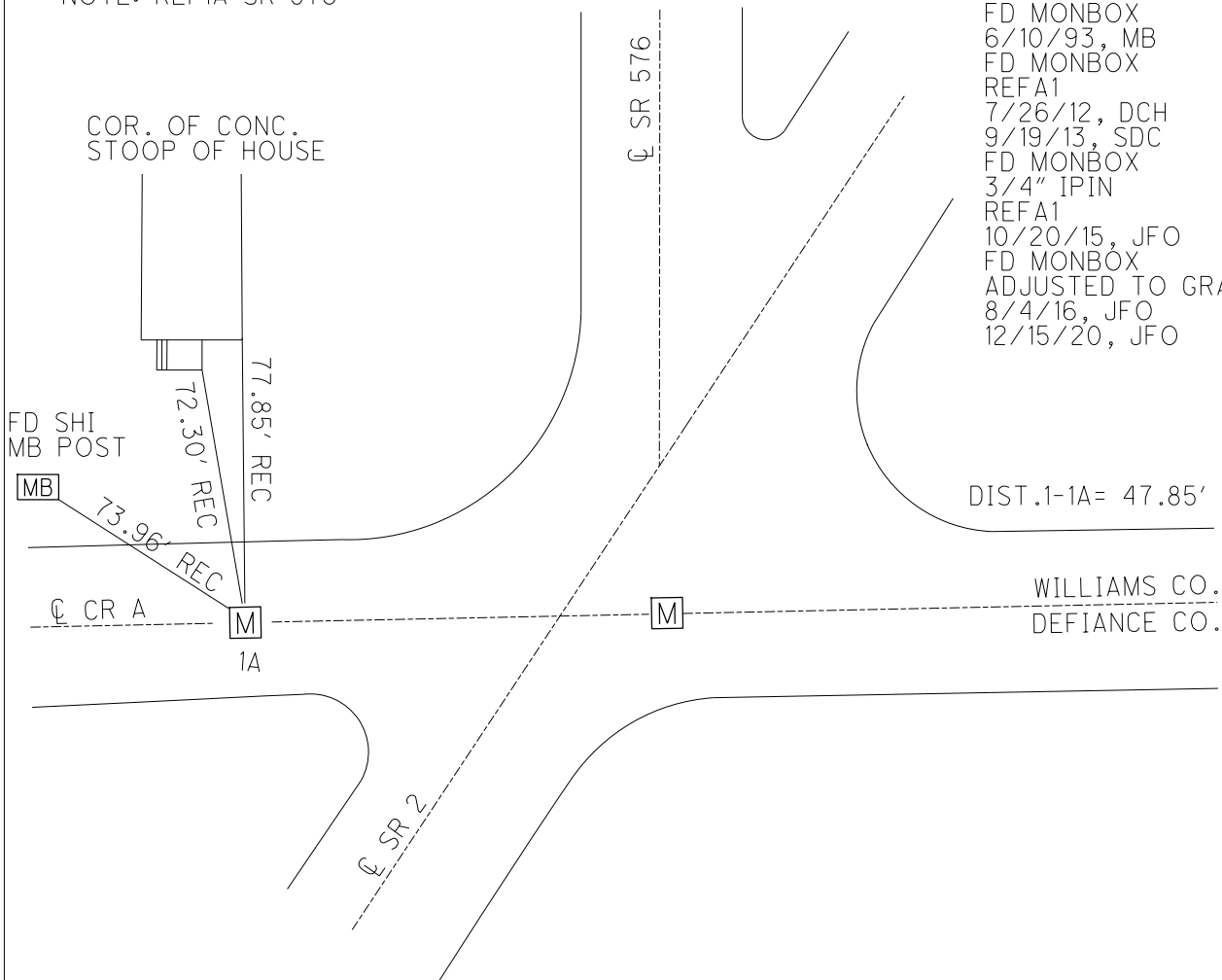
TYPE MONUMENT MONBOX W/ 3/4" IPIN
 ON SURFACE - ~~BELOW~~ ON
 OFFSET ϕ PAVEMENT 36.05' LT : RT
- TO - EDGE PAVEMENT
 STATION: 0+00

HORZ.DATUM: NAD83 2011 GEOID: NAVD88 2012A
 GRID: NORTHING: 648281.702 EASTING: 1389274.856



NOTE: REF1A SR 576

RECORD:
 FD MONBOX
 6/10/93, MB
 FD MONBOX
 REFA1
 7/26/12, DCH
 9/19/13, SDC
 FD MONBOX
 3/4" IPIN
 REFA1
 10/20/15, JFO
 FD MONBOX
 ADJUSTED TO GRADE
 8/4/16, JFO
 12/15/20, JFO



O.D.O.T. DISTRICT 2 SURVEY OFFICE (USE ONLY)

PERSONNEL

REFERENCE NO. 1 A

SHEET 2 OF 8

NOTES VAN DUSEN

DATE 6/10/93

ROUTE SR 2

H.C. KUSZ

WEATHER CLOUDY

COUNTY WILLIAMS

R.C. BARNHISEL

TEMP. 65°

TOWNSHIP CENTER

OTTO

SECTION 35

DWG BY NIESE

PID -

T 6 N R 2 E

TYPE MONUMENT MON BOX

ON SURFACE - ~~BELOW~~ ON

OFFSET \varnothing PAVEMENT 36.05' LT : RT

- TO - EDGE PAVEMENT

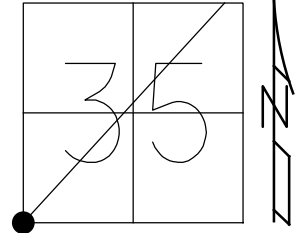
STATION: 0+00

HORIZ.DATUM: -

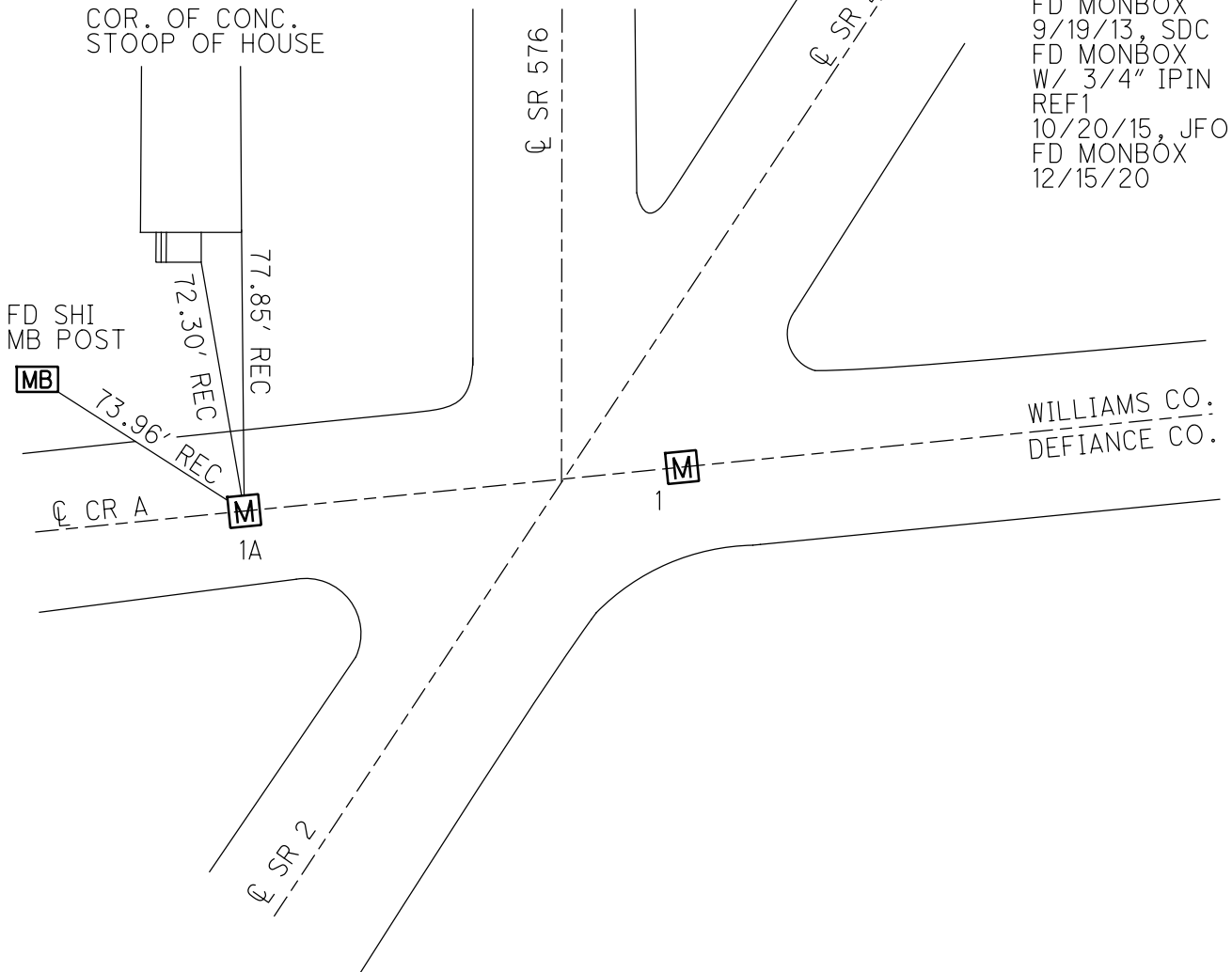
GEOID: -

GRID: NORTHING: 648281.702

EASTING: 1389274.856



DIST FROM 1 - 1A = 47.85'

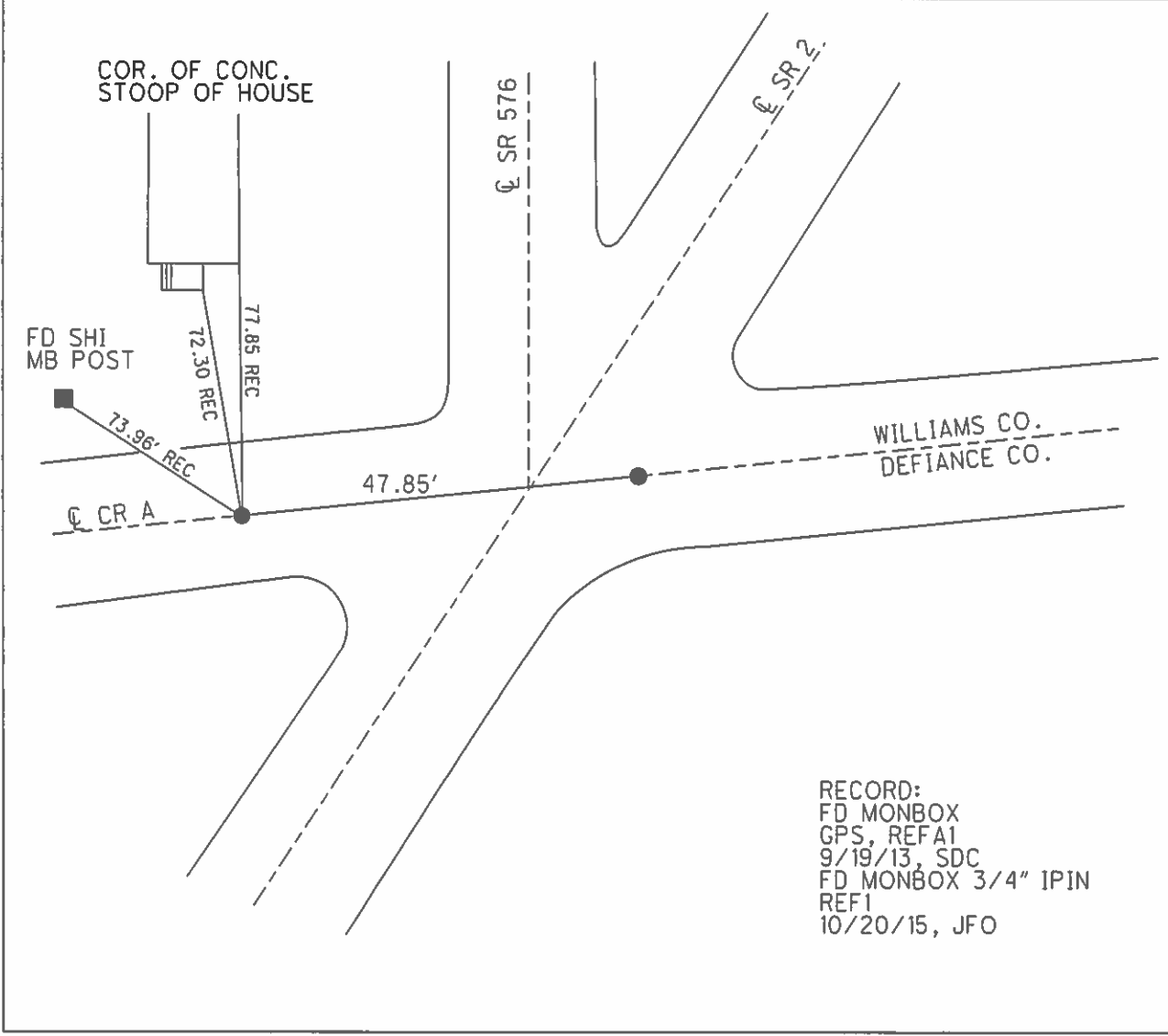
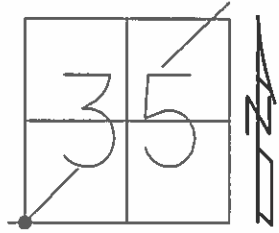


RECORD:
 FD MONBOX
 9/19/13, SDC
 FD MONBOX
 W/ 3/4" IPIN
 REF1
 10/20/15, JFO
 FD MONBOX
 12/15/20

O.D.O.T. DISTRICT 2 SURVEY OFFICE (USE ONLY)

PERSONNEL _____ REFERENCE NO. 1 A SHEET 2 OF 8
 NOTES VAN DUSEN DATE 6-10-93 ROUTE SR 2
 H.C. KUSZ WEATHER CLOUDY COUNTY WILLIAMS
 R.C. BARNHISEL TEMP. 65° TOWNSHIP CENTER
OTTO SECTION 35
 T 6 N R 2 E

TYPE MONUMENT MON BOX
 ON SURFACE - ~~BELOW~~ ON
 LEFT - ☉ PAV'T - ~~RIGHT~~ 36.05'
- TO - EDGE PAVEMENT
 S.L.M. 0+00
 Grid: Northing: 648281.702 Easting: 1389274.856



RECORD:
 FD MONBOX
 GPS, REFA1
 9/19/13, SDC
 FD MONBOX 3/4" IPIN
 REF1
 10/20/15, JFO

O.D.O.T. DISTRICT 2 SURVEY OFFICE

PERSONNEL

REFERENCE NO. 1

SHEET OF

NOTES VAN DUSEN

H.C. KUSZ

DATE 6-10-93

ROUTE 2

R.C. BARNHISEL

WEATHER CLOUDY

COUNTY WILLIAMS

OTTO

TEMP. +65°

TOWNSHIP CENTER

SECTION 35

(DIDN'T OPEN)

T. 6 N. R. 2 E.

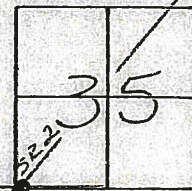
TYPE MONUMENT MON. BOX (EASTERLY ONE)

ON SURFACE - ~~BELOW~~ yes

~~LEFT~~ - PAV'T. - RIGHT 11.8

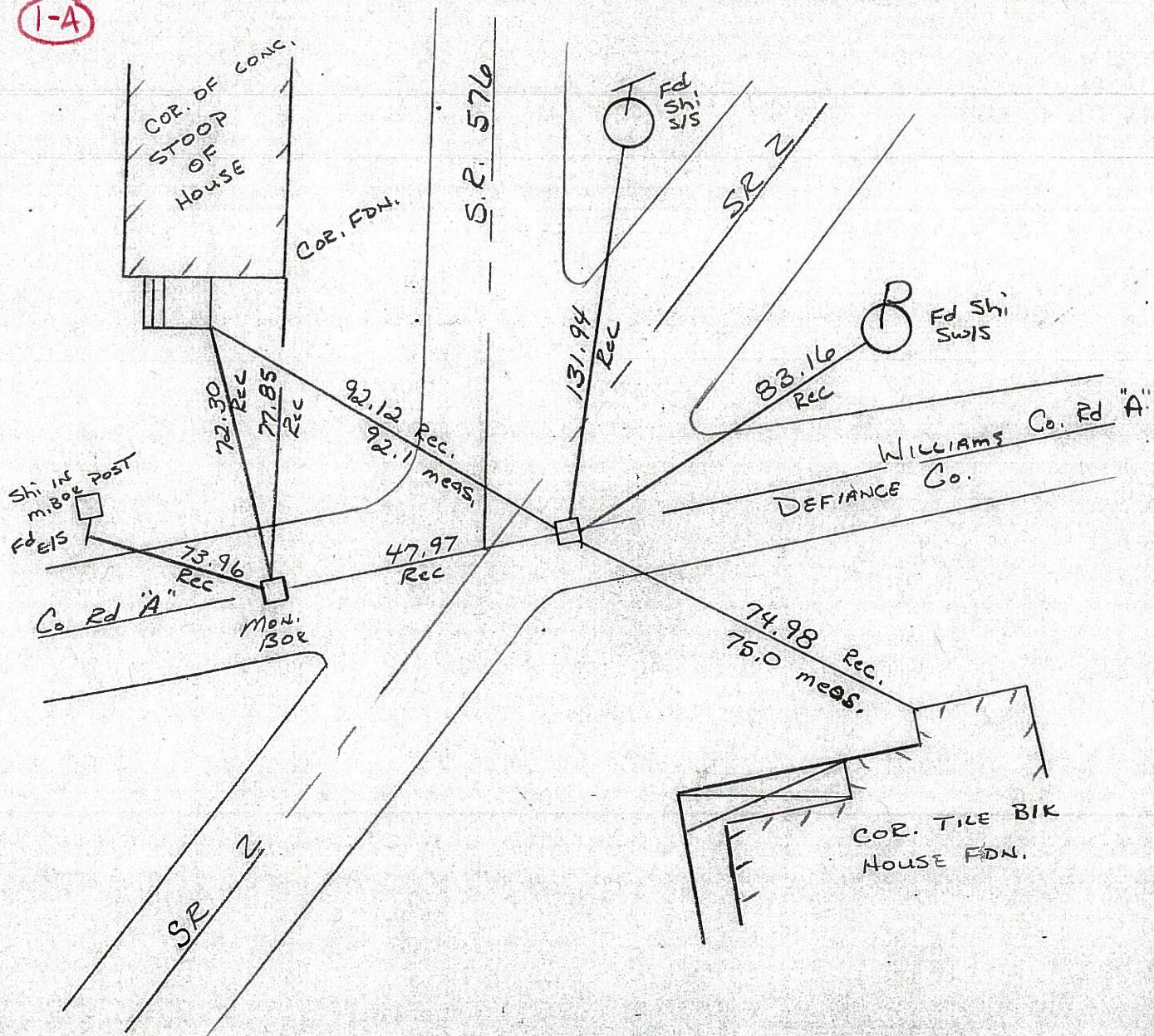
0.9 TO RT EDGE PAVEMENT

S.L.M. ② + 00



Co. Rd

1-A



County Williams S.R. 2

Township CENTER

Section _____

T N, R E

Personnel BURNSIDE

SMITH

BOWERS

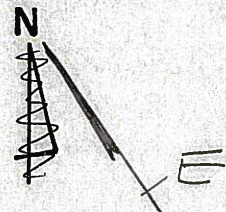
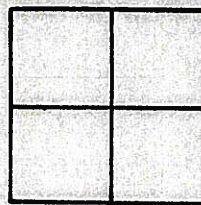
KNAPE

MEAD

Date 6-1-79

Weather CLOUDY

Temp. +70°



Resurfaced 1993

1-A

