

O.D.O.T. DISTRICT 2 SURVEY OFFICE (USE ONLY)

PERSONNEL

REFERENCE NO. 28 A

SHEET 7 OF 8

NOTES RHOADES DATE 12/15/20
 H.C. O'DONNELL WEATHER FAIR
 R.C. AUBLE TEMP. 25°

ROUTE SR 2
 COUNTY WILLIAMS
 TOWNSHIP CENTER
 SECTION 35

DWG BY NIESE PID NO PID

T 6 N R 2 E

TYPE MONUMENT MAG/WASHER

ON SURFACE - ~~BELOW~~ ON

OFFSET 0.6' LT : ~~RT~~

108' TO LT EDGE PAVEMENT

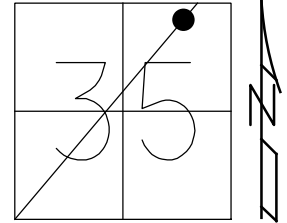
STATION: 58+80

HORZ.DATUM: NAD83 2011

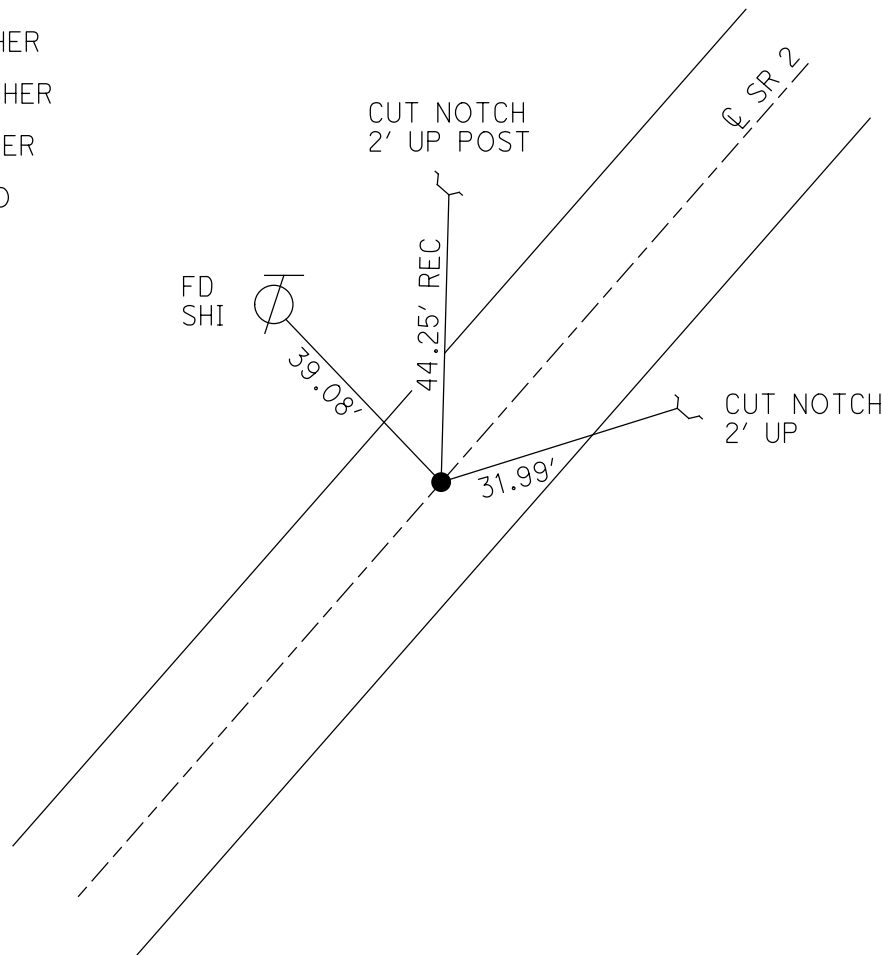
GEOID: NAVD88 2018

GRID: NORTHING: 652903.646

EASTING: 1392986.121



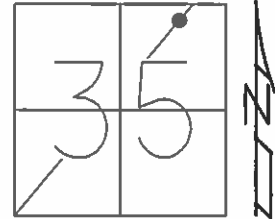
RECORD:
 P.K./WASHER
 8/24/93, MB
 FD P.K./WASHER
 9/19/13, SDC
 SET MAG/WASHER
 8/4/16, JFO
 FD MAG/WASHER
 REFA28
 12/18/20, JFO



O.D.O.T. DISTRICT 2 SURVEY OFFICE (USE ONLY)

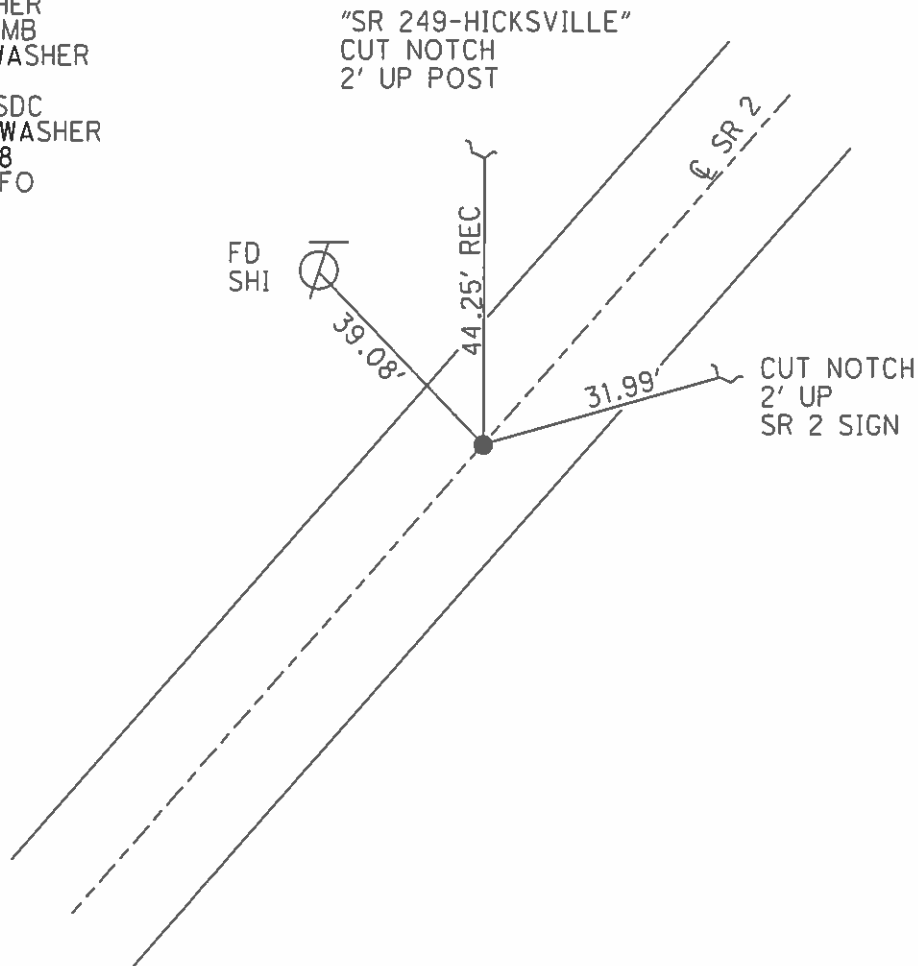
PERSONNEL _____ REFERENCE NO. 28 A SHEET 7 OF 8
 NOTES RHOADES DATE 10-20-15 ROUTE SR 2
 H.C. O'DONNELL WEATHER CLEAR COUNTY WILLIAMS
 R.C. HOMAN TEMP. 50° TOWNSHIP CENTER
 _____ SECTION 35
 _____ T 6 N R 2 E

TYPE MONUMENT P.K./WASHER
 ON SURFACE - ~~BELOW~~ ON
 LEFT - ☉ PAV'T - ~~RIGHT~~ 0.6'
10.8' TO LT EDGE PAVEMENT
 S.L.M. 50+97.04



Grid: Northing: 652903.572 Easting: 1392986.143

RECORD:
 P.K./WASHER
 8-24-93, MB
 FD P.K./WASHER
 REFA28
 9/19/13, SDC
 SET MAG/WASHER
 NEWREFA28
 8/4/16, JFO

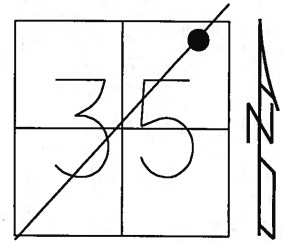


O.D.O.T. DISTRICT 2 SURVEY OFFICE (USE ONLY)

PERSONNEL _____ REFERENCE NO. 28 A SHEET 2 OF 2

NOTES	<u>VAN DUSEN</u>	DATE	<u>6-10-1993</u>	ROUTE	<u>SR 2</u>
H.C.	<u>KUSZ</u>	WEATHER	<u>CLOUDY</u>	COUNTY	<u>WILLIAMS</u>
R.C.	<u>BARNHISEL</u>	TEMP.	<u>65°</u>	TOWNSHIP	<u>CENTER</u>
	<u>OTTO</u>			SECTION	<u>35</u>
				T	<u>6 N</u>
				R	<u>2 E</u>

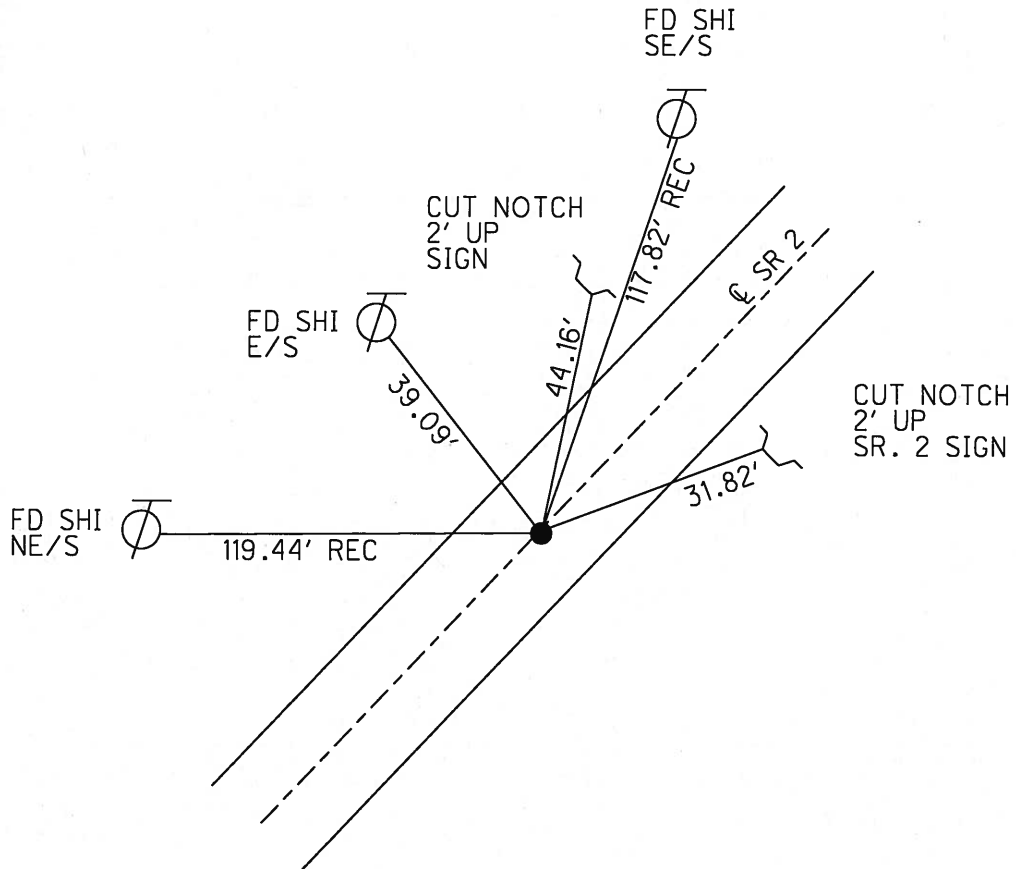
TYPE MONUMENT P.K. NAIL
 ON SURFACE - ~~BELOW~~ ON _____
 LEFT - ☉ PAV'T - ~~RIGHT~~ 0.6'
10.8 TO LT EDGE PAVEMENT
 S.L.M. 59+07.34
 Grid: Northing: 652903.628 Easting: 1392986.066



RESET PK/WASHER
8-24-93, MIB

FD PK/WASHER
8-8-12

GPS, REFA28
8-16-12



O.D.O.T. DISTRICT 2 SURVEY OFFICE

PERSONNEL

REFERENCE NO. 28-A

SHEET OF

NOTES VAN DUSEN

H.C. KUSZ

DATE 6-10-93

ROUTE 2

R.C. BARNHISEL III

WEATHER CLOUDY

COUNTY WILLIAMS

OTTO

TEMP. +65°

TOWNSHIP CENTER

SECTION 35

T. 6 N. R. 2 E

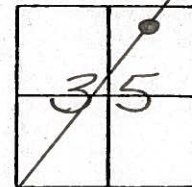
TYPE MONUMENT P.K. NAIL

ON SURFACE - ~~BELOW~~ YES

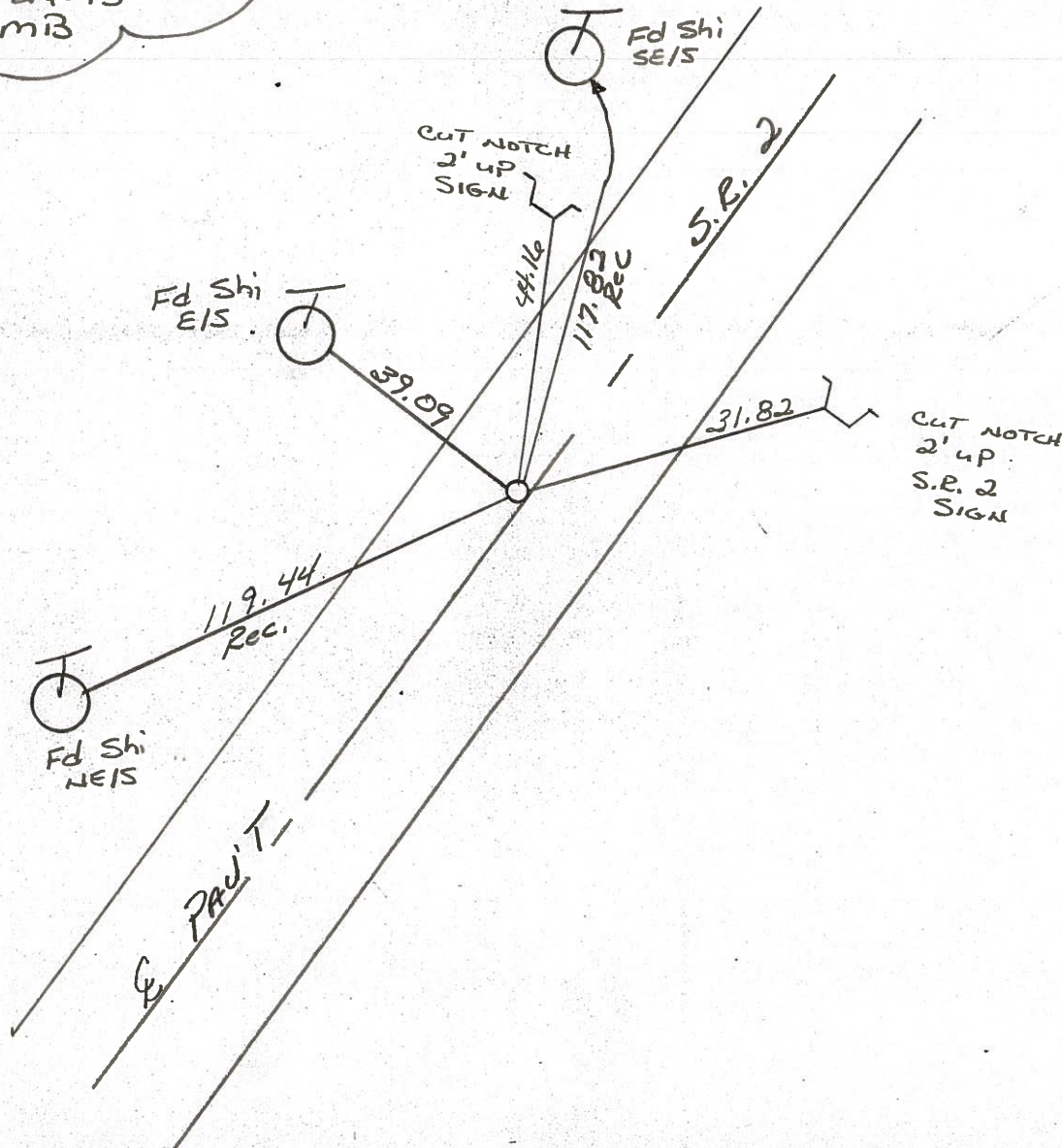
LEFT - ~~CL~~ PAV'T. - ~~RIGHT~~ 0.6

10.8 TO LT EDGE PAVEMENT

S.L.M. 59+01



Reset P.K. & WASHER
8-24-93
mib



County Williams S.R. # 2

Township Center

Section 35

T N, R E

Personnel I. Stone

P. Neuser

R. Michalaky

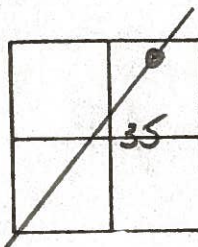
D. Curtis

28-A

Date 27 July 84

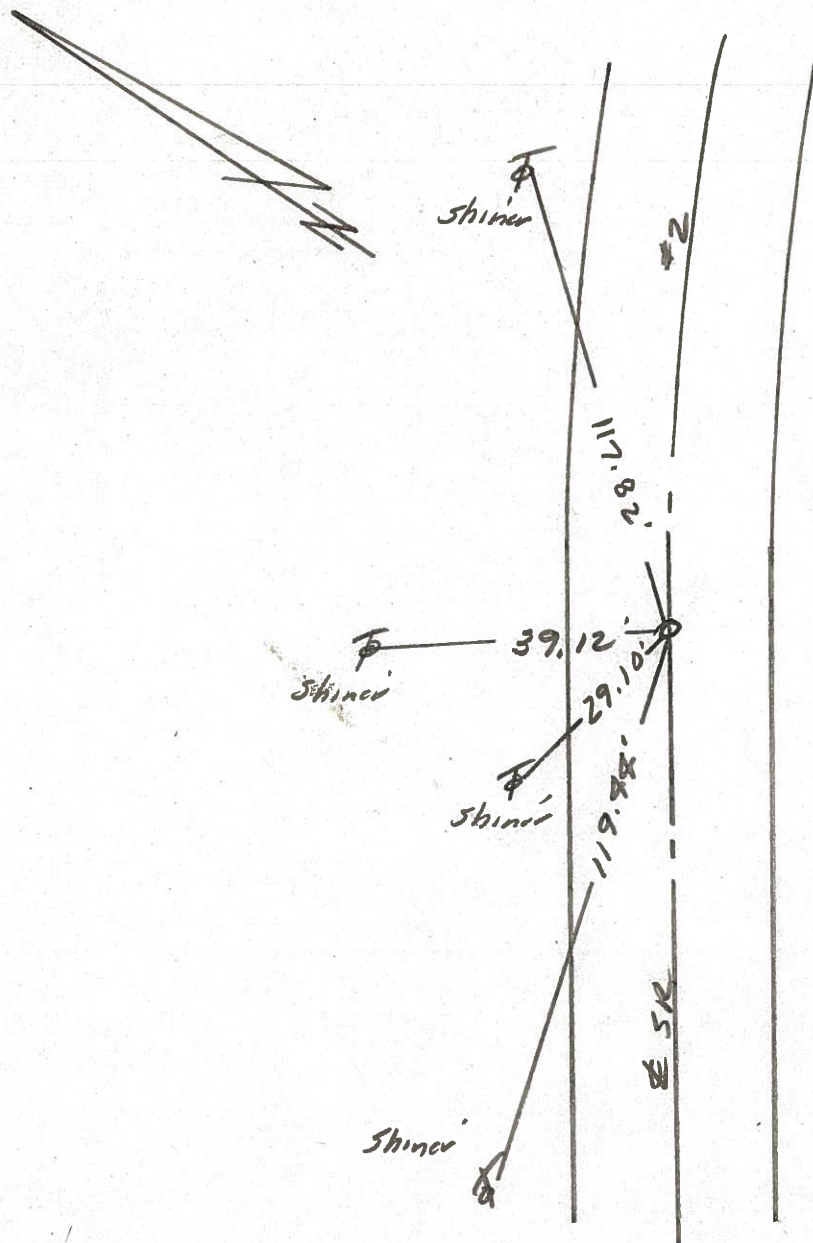
Weather Cloudy

Temp. 70°



SLM STA. 59+08

REF. NO. 28-A



P.C. Curve
 Fd. PK Nail 1" deep
 11.2' to E. edge put,
 10.4' to W. edge put

Reset P.K. Nail to Surface -
 12-10-84

County WILLIAMS S.R. 2

Date 6-4-79

Township _____

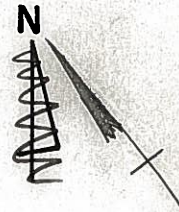
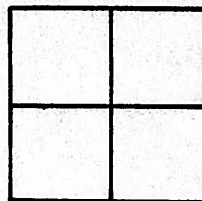
Weather CLEAR

Section _____

Temp. +78°

T N, R E

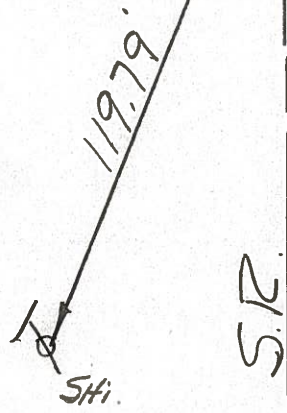
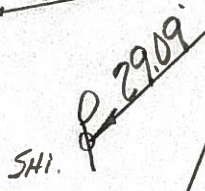
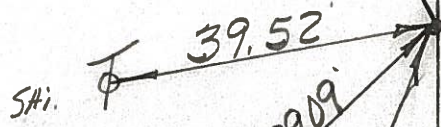
Personnel BURNSIDE
SMITH
BOWERS
KNAPE
MEAD



#28-A



94.10
+
39.52



FD. P.K. NAIL @ SURFACE
& IN CTR. PAVE.

P.C. OLD STA. = 59+07.35

N

S.R.

PERSONNEL TITLE PERSONNEL TITLE

COUNTY Wi.

DATE 7-15-58

Louys
Pessafall
Wise
Krohn

S. R. 2
Williams Center
to Bryan

WEATHER Cloudy
TEMP. 75°

DESCRIPTION

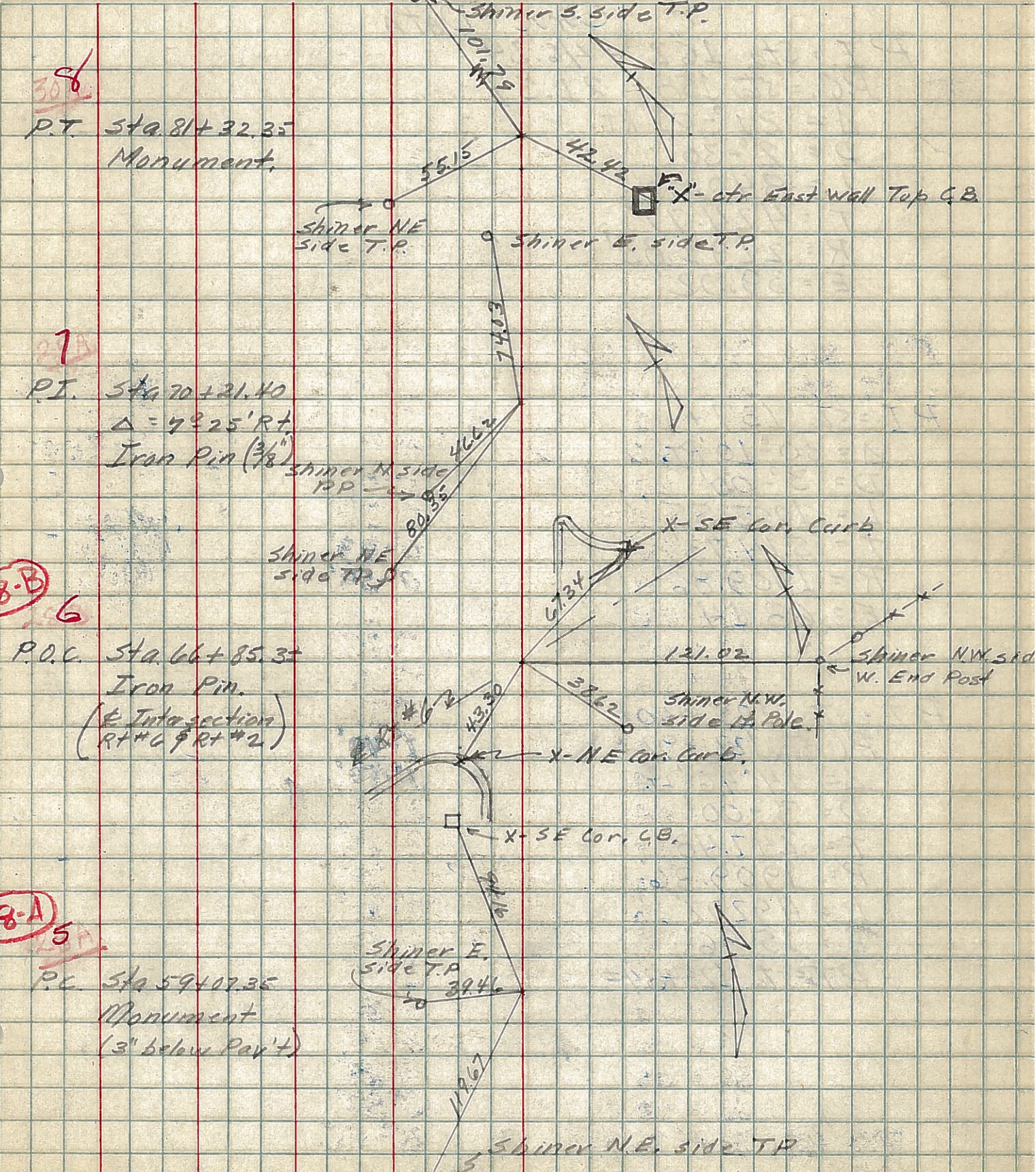
Re-check of witnesses

JOB NO.

LEFT

CENTER LINE

RIGHT



306
P.T. Sta. 81+32.35
Monument

27
P.I. Sta. 70+21.40
 $\Delta = 72^{\circ}25' RT.$
Iron Pin ($\frac{3}{8}$ " shiner N. side T.P.)

28-B
6

P.O.C. Sta. 66+85.35
Iron Pin.
($\frac{1}{2}$ " Int. section)
(RT #1 & RT #2)

28-A
5

P.C. Sta. 59+07.35
Monument
(3" below Pav't)

Shiner N.E. side T.P.