

# O.D.O.T. DISTRICT 2 SURVEY OFFICE

PERSONNEL \_\_\_\_\_

REFERENCE NO. 30-A

SHEET \_\_\_\_\_ OF \_\_\_\_\_

NOTES BARNHISEL

H.C. Lochake

R.C. \_\_\_\_\_

DATE 8-21-88

WEATHER SUNNY

TEMP. +75°

ROUTE S.E. 2

COUNTY Williams

TOWNSHIP Centee

SECTION 26

T. 6 N. R. 2 E.

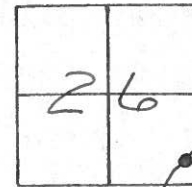
TYPE MONUMENT P.K. NAIL

ON SURFACE - BELOW yes

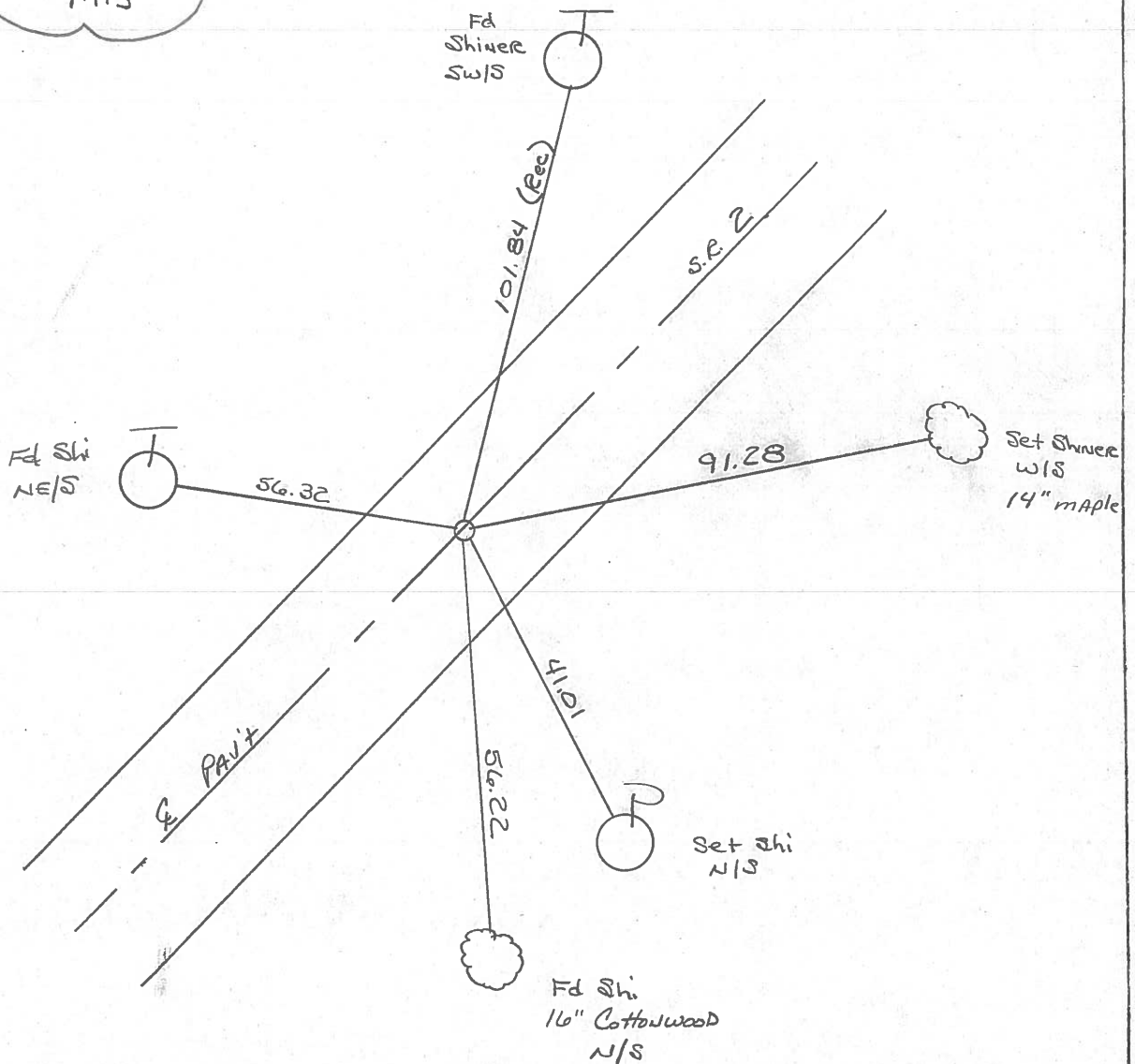
LEFT - &lt; PAV'T. - RIGHT yes

109 TO 4+ EDGE PAVEMENT

S.L.M. 81+49



Set P.K. &lt; Washer  
12-5-89  
m/s



County Williams S.R. #2

Date 27 July 84

Township Center

Weather Cloudy

Section 26

Temp. 70°

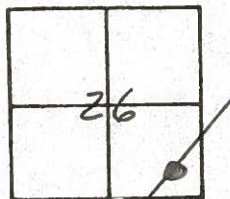
T N, R E

Personnel I. Stone

P. Neuser

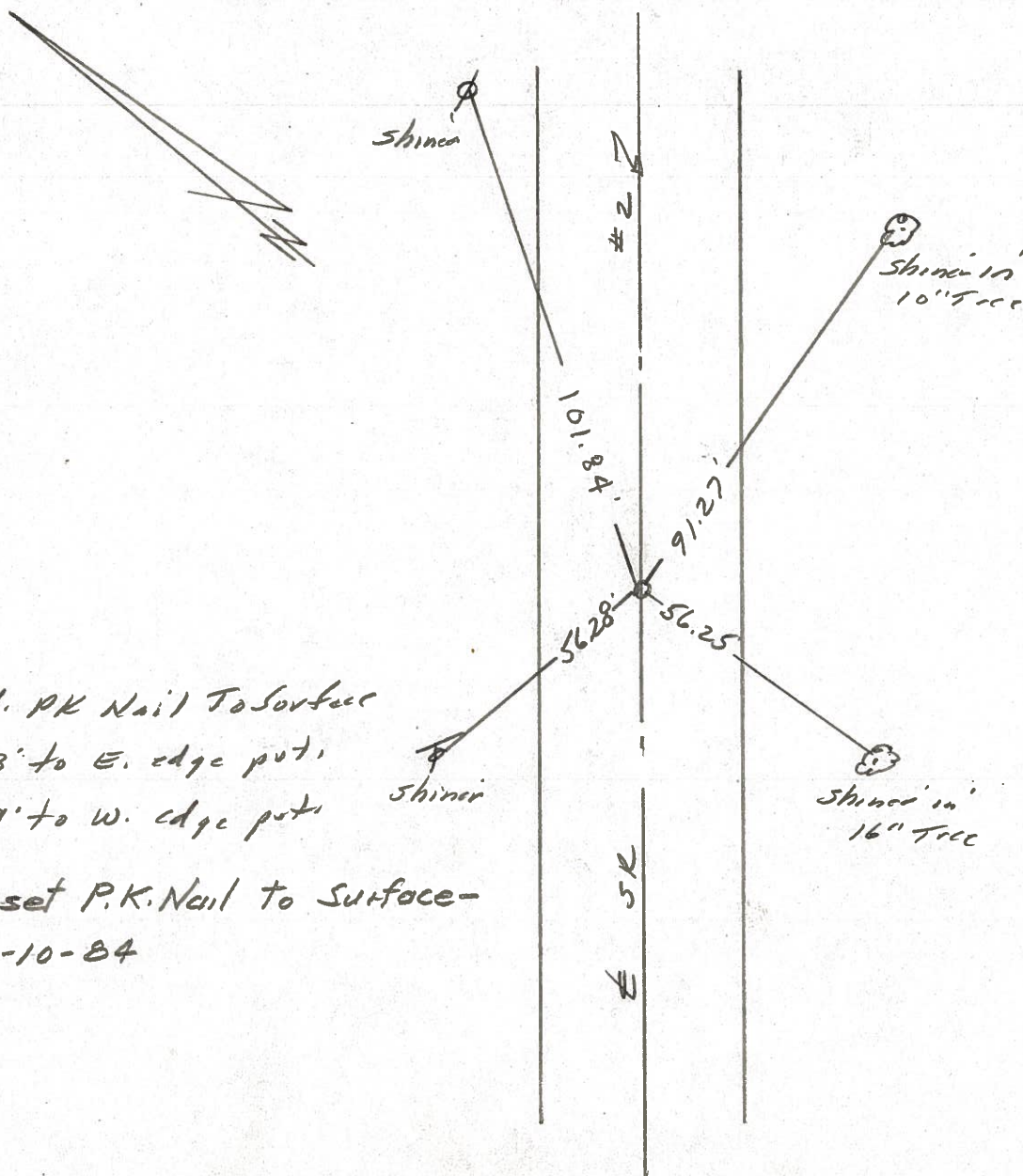
R. Michalak

D. Curtis



SLM STA 81+33

REF. NO. 30-A



Fd. PK Nail To Surface  
 11.3' to E. edge put,  
 10.9' to W. edge put

Reset P.K. Nail to Surface -  
 12-10-84

E SR

County WILLIAMS S.R. 2

Date 6-4-79

Township \_\_\_\_\_

Weather CLEAR

Section \_\_\_\_\_

Temp. +85°

T N, R E

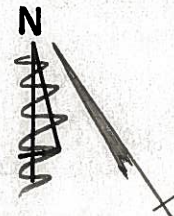
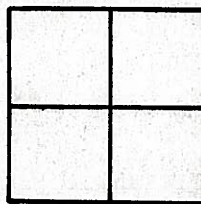
Personnel BURNSIDE

SMITH

BOWERS

KWAPE

MEAD



#30-A

FD. P.K. NAIL @ SURFACE  
5' IN CTR. PAVE.

P.T. OLD STA. 81+32.35

