

O.D.O.T. DISTRICT 2 SURVEY OFFICE

PERSONNEL _____

REFERENCE NO. 31-A

SHEET _____ OF _____

NOTES BADHISEL

H.C. Lochake

R.C. _____

DATE 8-21-89

WEATHER Sunny

TEMP. +75°

ROUTE S.R. 2

COUNTY Williams

TOWNSHIP Center

SECTION 25

T. 4 N. R. 2 E.

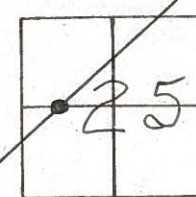
TYPE MONUMENT P.K. Nail

ON SURFACE - ~~BELOW~~ yes

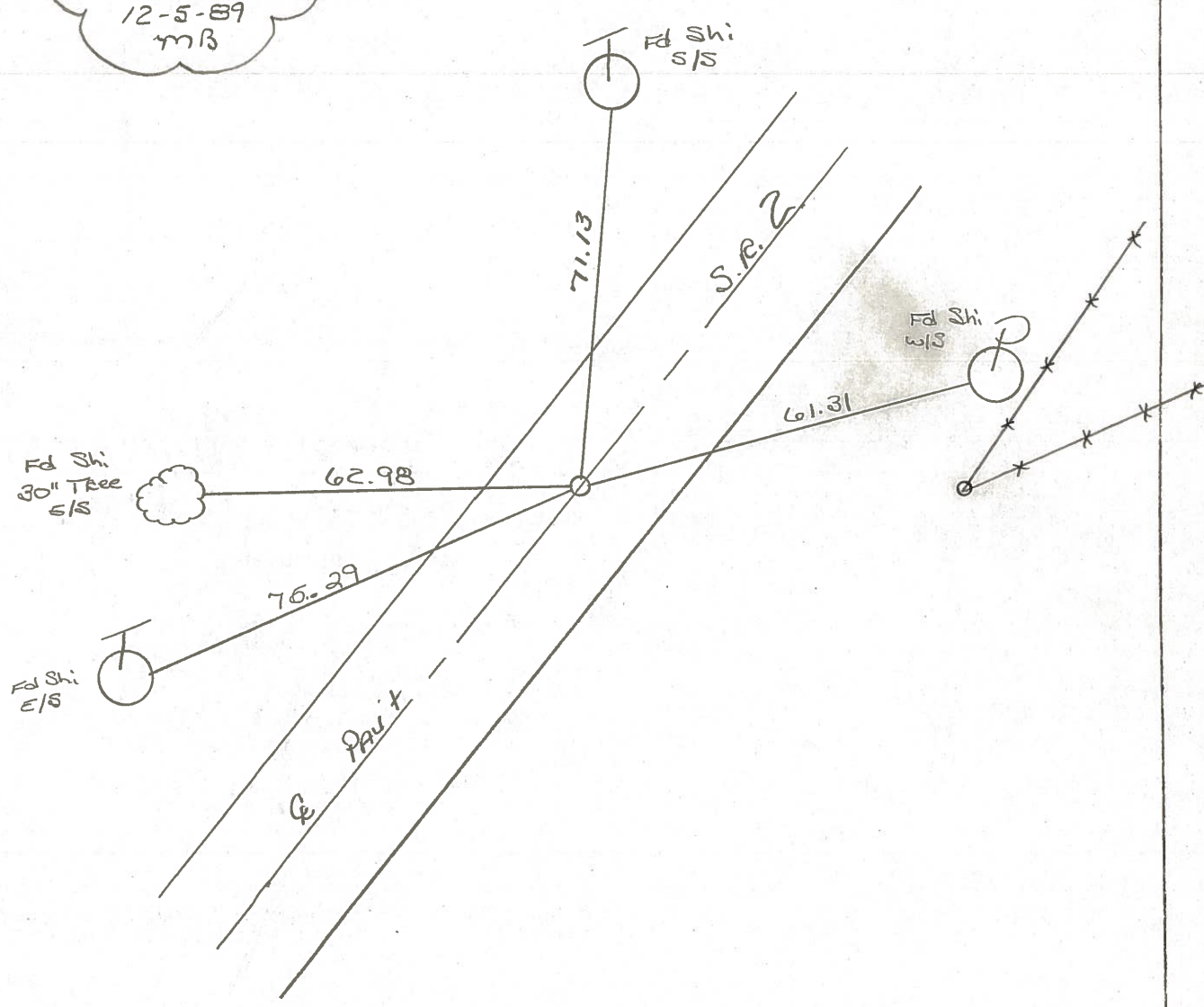
LEFT - ~~Q~~ PAV'T. - ~~RIGHT~~ yes

11.0 TO RT EDGE PAVEMENT

S.L.M. 103+44



Set P.K. & Washee
12-5-89
MB



County Williams S.R. #2

Date 27 July 84

Township Center

Weather Cloudy

Section 25

Temp. 70°

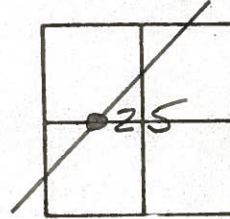
T_N, R_E

Personnel I. Stone

P. Neusse

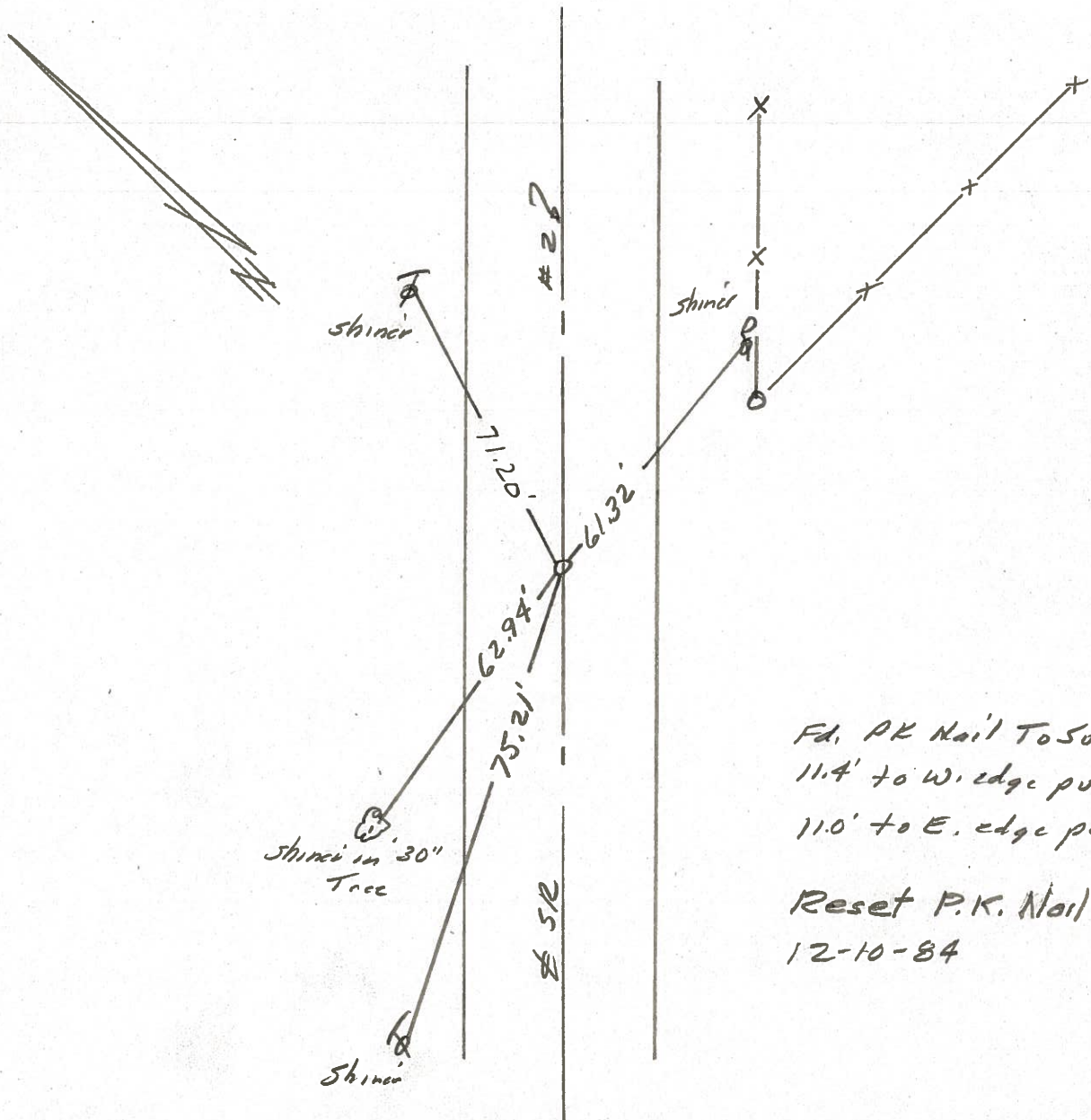
R. Michalak

D. Curtis



SLM STA. 103+30

REF. NO. 31A



Fd. PK Nail To Surface
 11.4' to W. edge pt.
 11.0' to E. edge pt.

Reset P.K. Nail to Surface
 12-10-84

County WILLIAMS S.R. 2

Date 6-6-79

Township _____

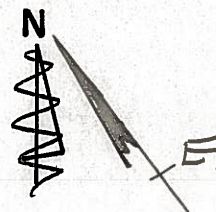
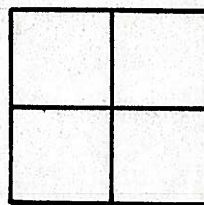
Weather CLOUDY

Section _____

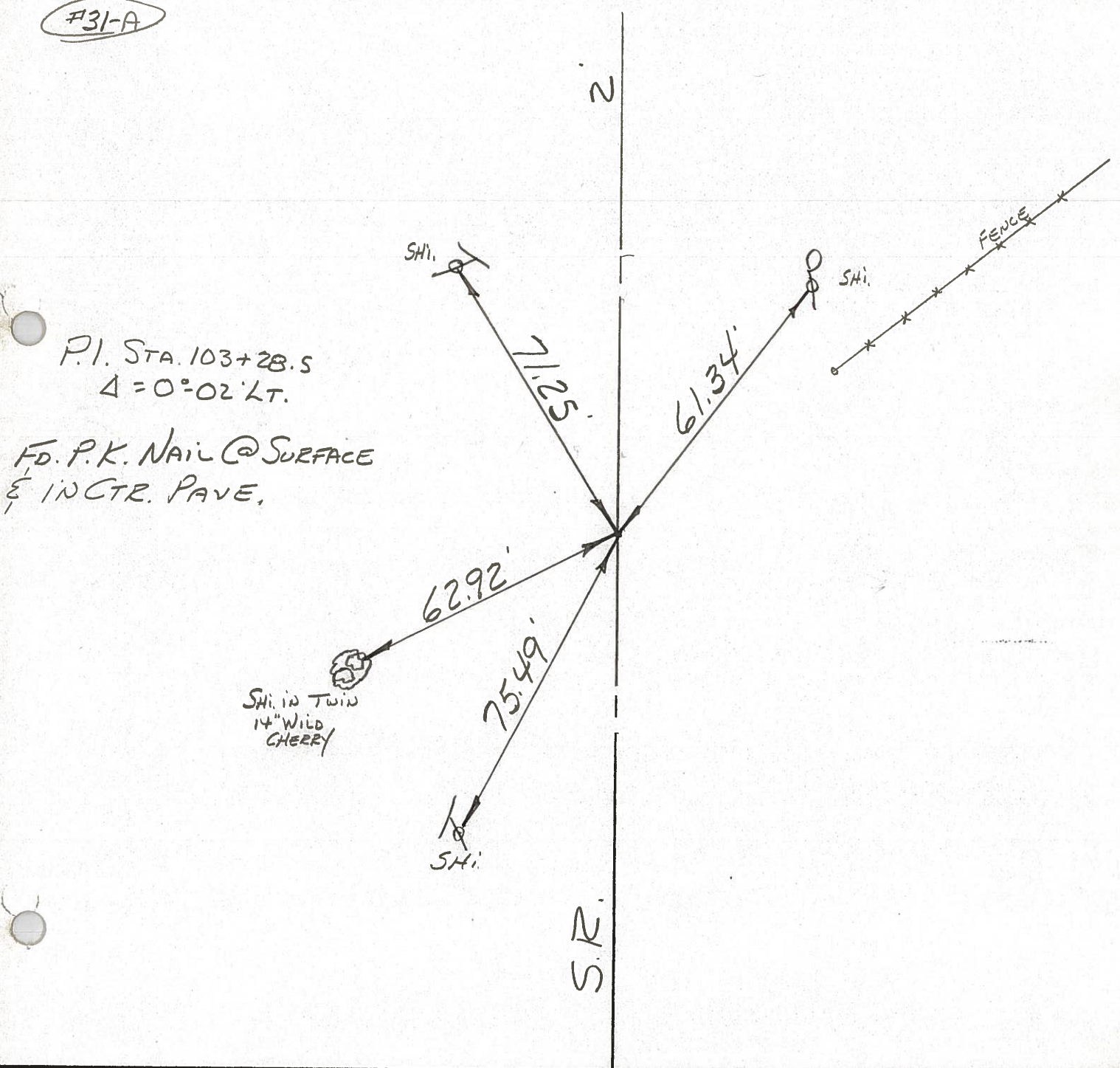
Temp. +65°

T_N, R_E

Personnel BURNSIDE
SMITH
BOWERS
KNAPE
MEAD



#31-A



P.I. STA. 103+28.5
 $\Delta = 0^{\circ}02'LT.$

FD. P.K. NAIL @ SURFACE
 E INCTR. PAVE.

S.R.

PERSONNEL TITLE PERSONNEL TITLE

Louys
Passafium
Wise
Krohn

COUNTY Wi.

DATE 7-15-58

S. R. 2
Williams Center
to Bryan.

WEATHER Fair.
TEMP. 75°

DESCRIPTION

Re-check of Witnesses

JOB NO. _____

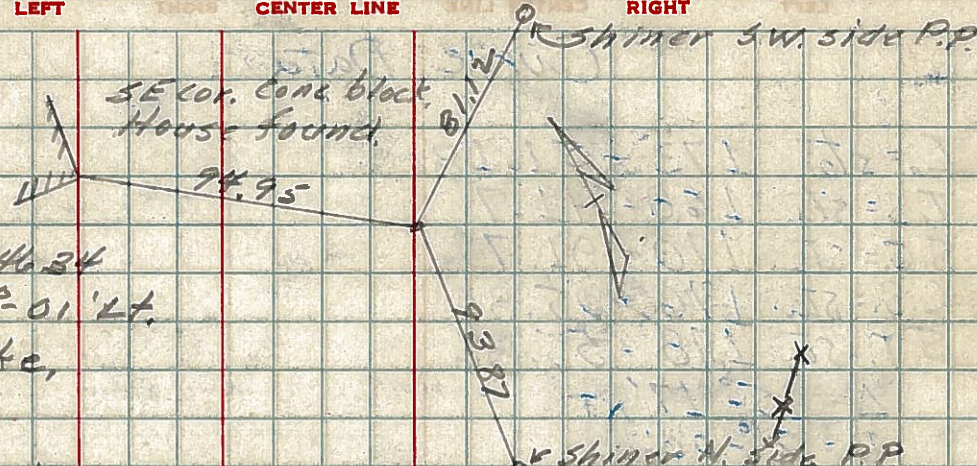
LEFT

CENTER LINE

RIGHT

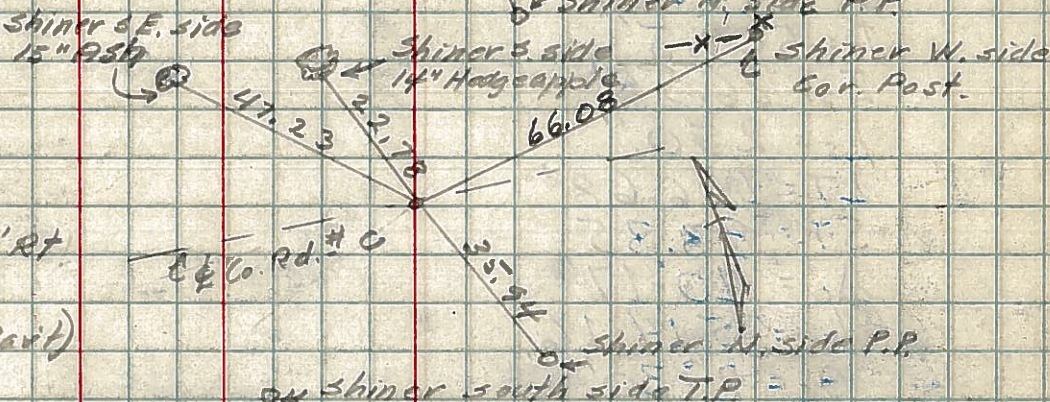
12

P.I. Sta. 162+46.34
 $\Delta = 21^{\circ} 01' \text{ Lt.}$
R.R. Spike,



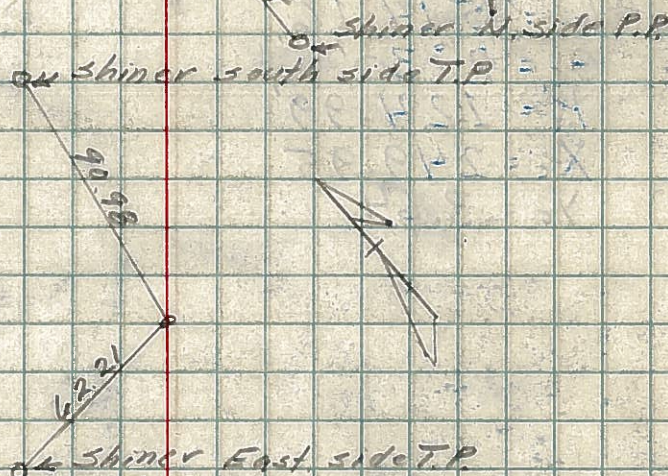
11

P.I. Sta. 137+
 $\Delta = 30^{\circ} 10' \text{ Rt}$
Tie Bolt
(6' Below Part)



10

P.I. Sta. 125+40±
Found Hub
Placed 3/8" Iron Rod



9

P.I. Sta. 103+28.5
 $\Delta = 0^{\circ} 02' \text{ Lt}$
Monument

