

# O.D.O.T. DISTRICT 2 SURVEY OFFICE

PERSONNEL \_\_\_\_\_

REFERENCE NO. 35-A & A-1

SHEET \_\_\_\_\_ OF \_\_\_\_\_

NOTES BARNHISEL

H.C. Loehke

R.C. \_\_\_\_\_

DATE 8-21-89

WEATHER SUNNY

TEMP. +75°

ROUTE S.E. 2

COUNTY Williams

TOWNSHIP Center

SECTION 19

T 6 N R 3 E

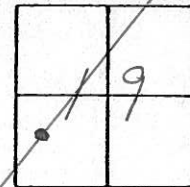
TYPE MONUMENT P.K. NAILS

ON SURFACE - BELOW Pt. 'A' SURFACE Pt. 'B' 1" DOWN

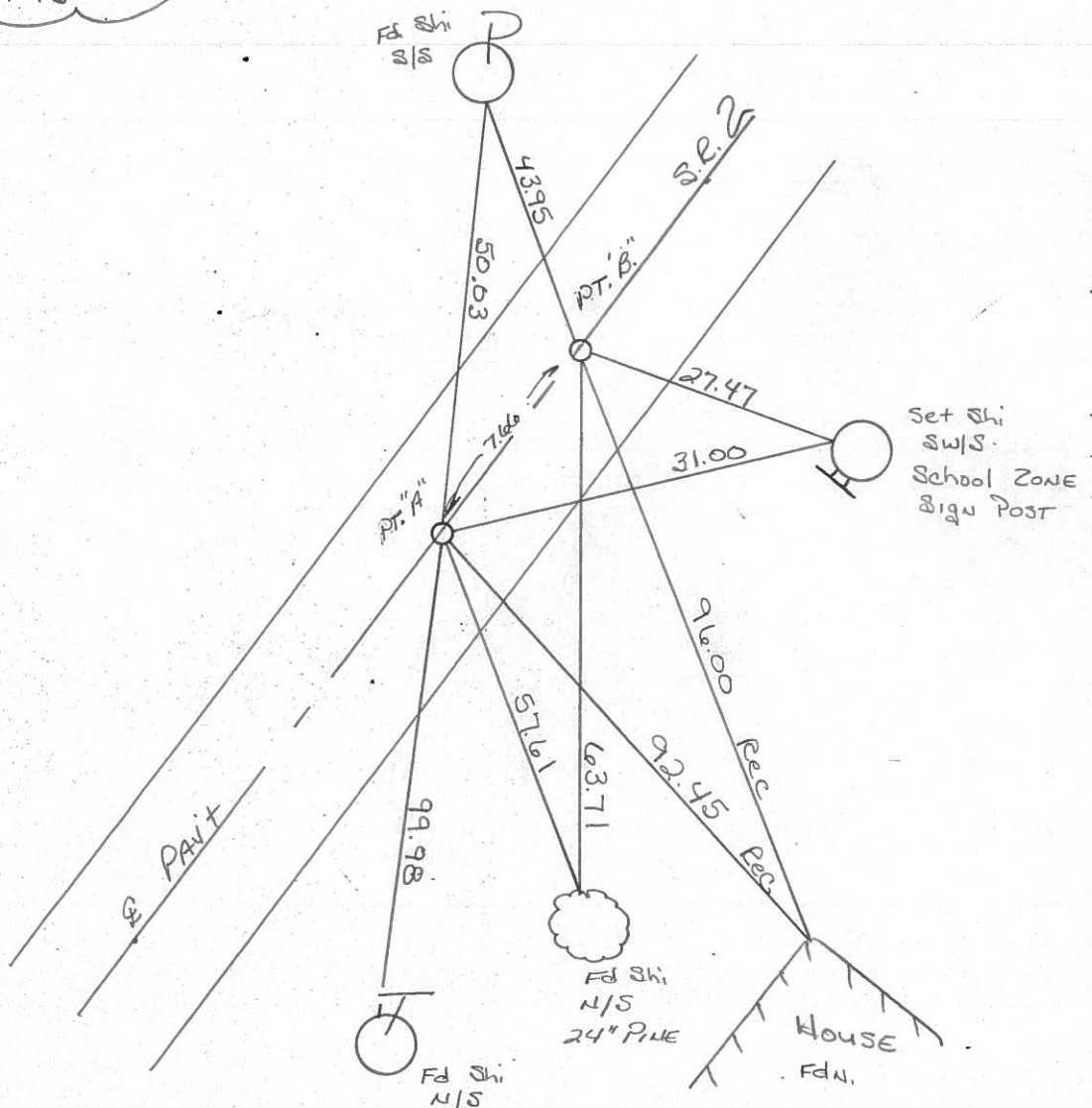
LEFT - PAV'T. - RIGHT YES YES

11.0 TO RT EDGE PAVEMENT

S.L.M. 168+47 168+55



Set P.K. NAILS & Washers  
12-5-89  
MB



County Williams S.R. #2

Date 27 July 84

Township Pulaski

Weather Cloudy

Section 19

Temp. 70°

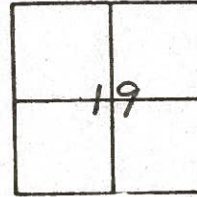
T N, R E

Personnel I. Stone

P. Neuse

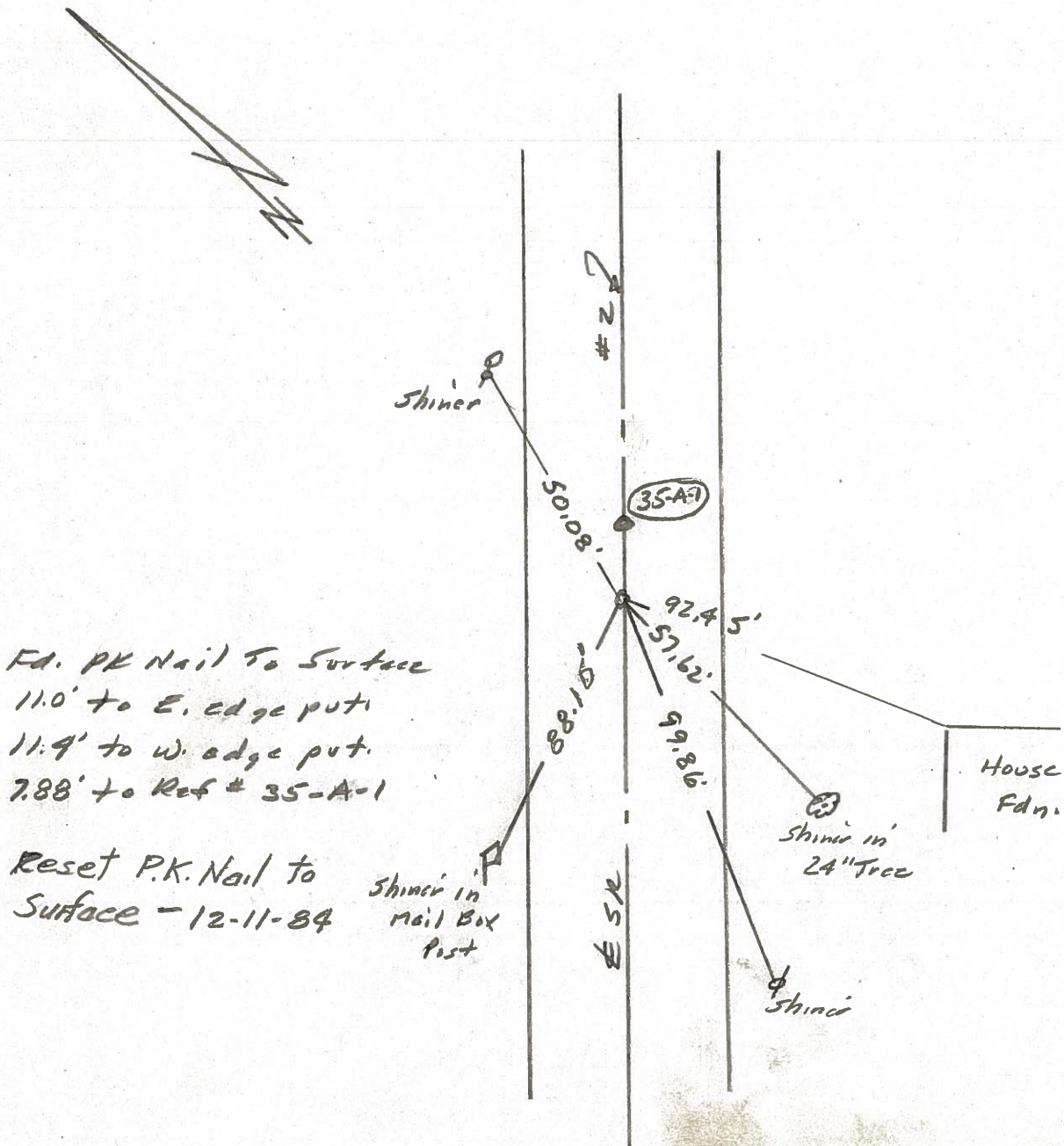
R. Michalak

D. Curtis



SLM STA. 168+37

REF. No. 35-A



County Williams S.R. #2

Date 27 July 84

Township Poleski

Weather Cloudy

Section 19

Temp. 70°

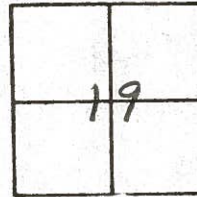
T N, R E

Personnel J. Stone

P. Neuser

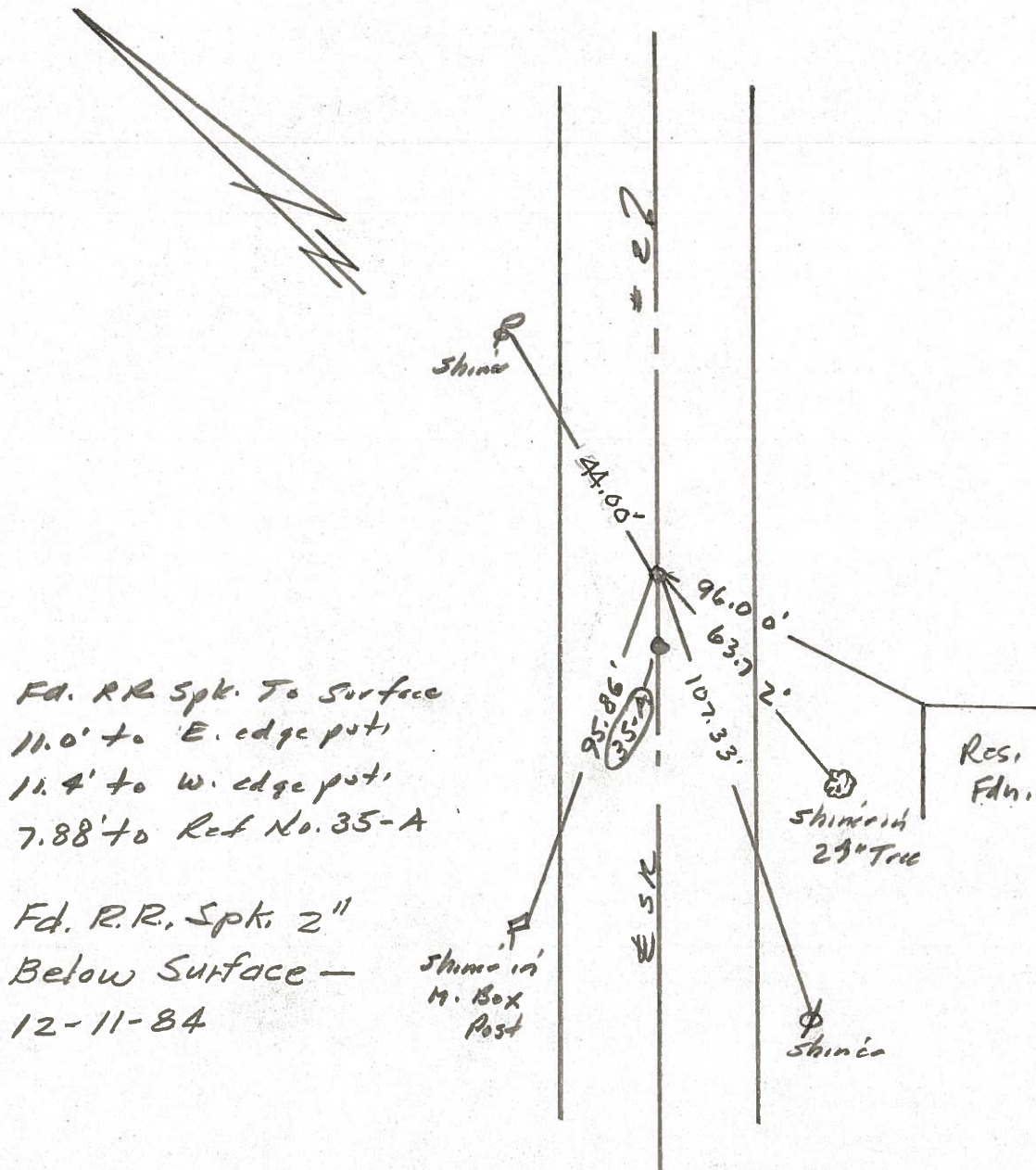
R. Michalak

D. Curtis



SLM STA. 168+45

REF. NO. 35-A-1



County WILLIAMS - S.R. 2

Date 5-23-79

Township PULASKI

Weather CLEAR

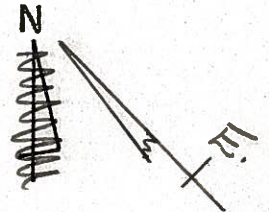
Section 19 BRYAN CORP.

Temp. +60°

T N, R E

Personnel BURNSIDE  
SMITH  
KNAPE  
MEAD

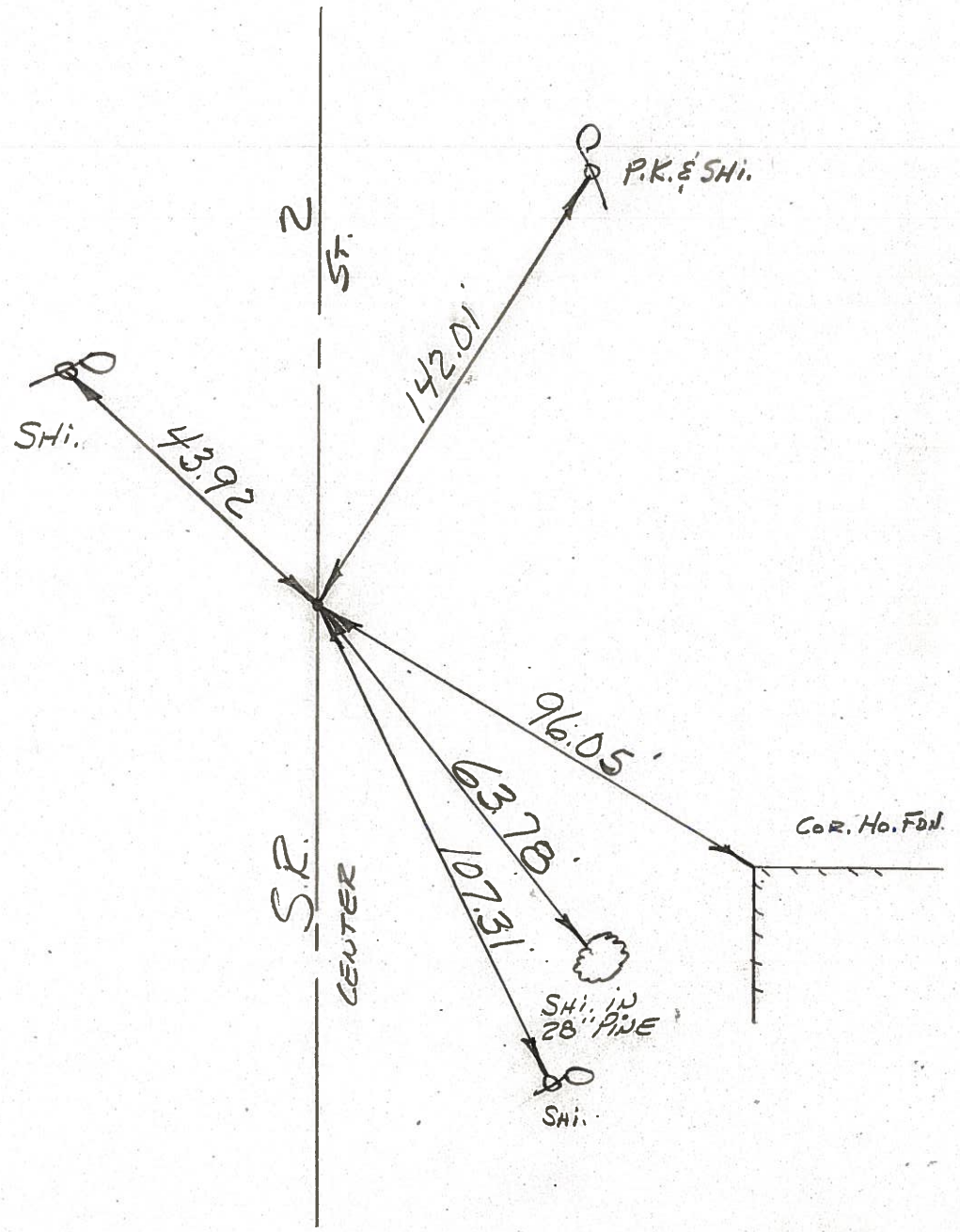
BRYAN	
19	
CORP	



#35A

Field Book

T.S.  
 STA. 168+41.70  
 F.D. R.R. SPK @ SURFACE  
 & IN CTR. PAVE.



PERSONNEL TITLE PERSONNEL TITLE

COUNTY Wi.

DATE 7-16-58

Louys  
Passafall

S. R. 2

WEATHER Fair.

Wise

Williams Center

Krohn

SEC. to Bryan

TEMP. 75°

DESCRIPTION

Re-check of Witnesses.

JOB NO.

LEFT

CENTER LINE

RIGHT

