

County Williams S.R. # 2

Date 27 July 84

Township Pulaski

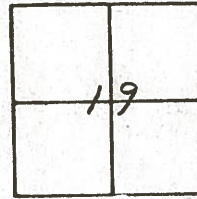
Weather cloudy

Section 19

Temp. 70°

T N, R E

Personnel J. Stone



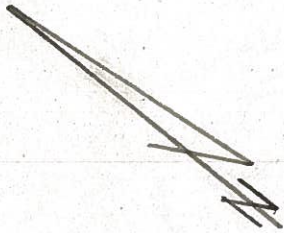
P. Newsc

R. Michalok

D. Curtis

SLM STA. 208+08

REF. NO. 35-E



Shiner

47.84'

E Taylor Rd. (Put.)

52.6'

Shiner

35.86'

E 2# 25 E

73.99'

Shiner in 36" Tree

Fd P.K. Nail To Surface
11.5' to E. edge put.
10.9' to W. edge put.

Reset P.K. Nail to Surface
12-11-84

Shiner in 16" Tree

County WILLIAMS S.R. 2

Date 5-23-79

Township PULASKI

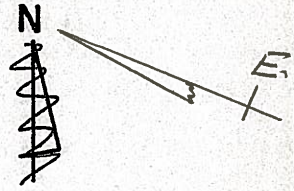
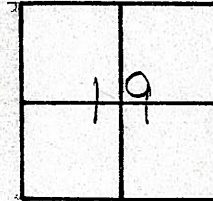
Weather CLEAR

Section 19 BRYAN CORP.

Temp. +76°

T. N, R. E

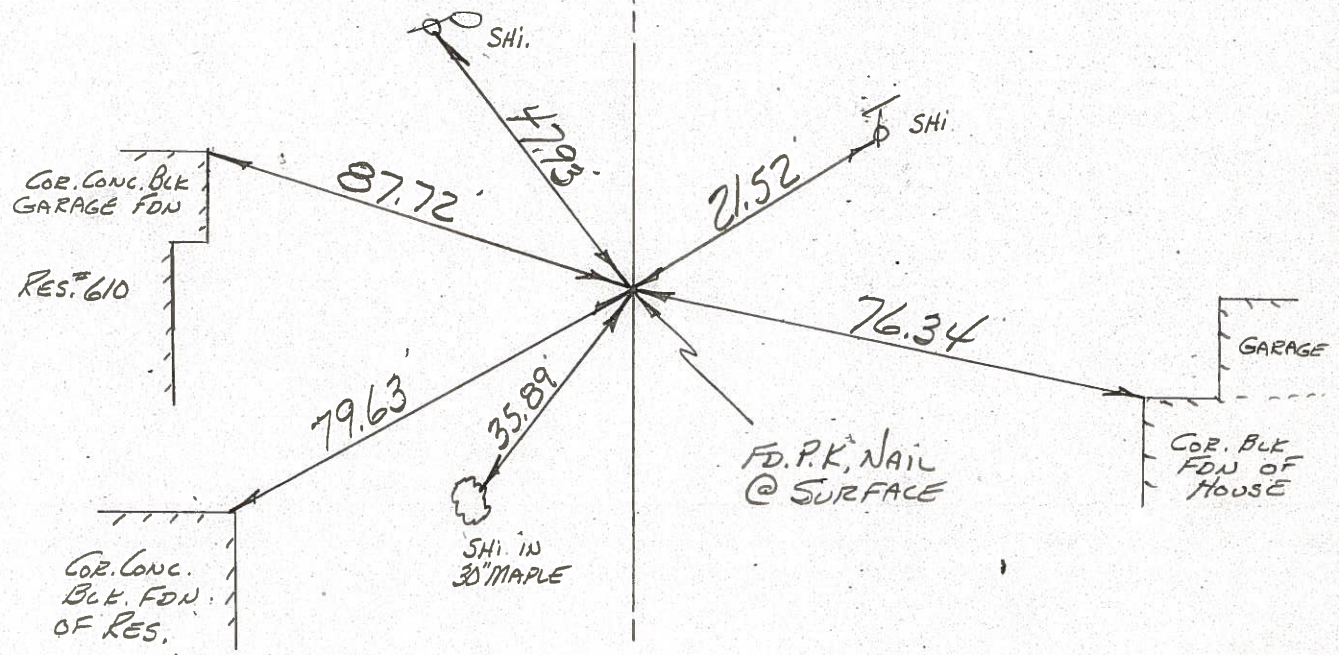
Personnel BURNSIDE
SMITH
KNAPE
MEAD



#35B

P.O.T.
STA. 208+02.18
FD. P.K. NAIL @
SURFACE

TAYLOR RD.



OXFORD DRIVE

PERSONNEL TITLE PERSONNEL TITLE

Loays

COUNTY Wi.

DATE 7-16-58

Pesselall

S. R. 2

WEATHER Fair

Wise

Williams Center

Krohn

SEC. to Bryan.

TEMP. 75°

DESCRIPTION

Re-check of Witnesses

JOB NO.

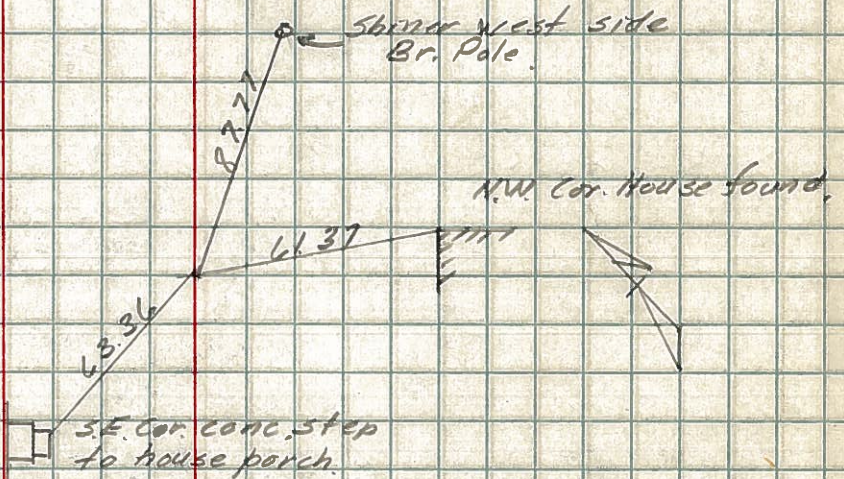
LEFT

CENTER LINE

RIGHT

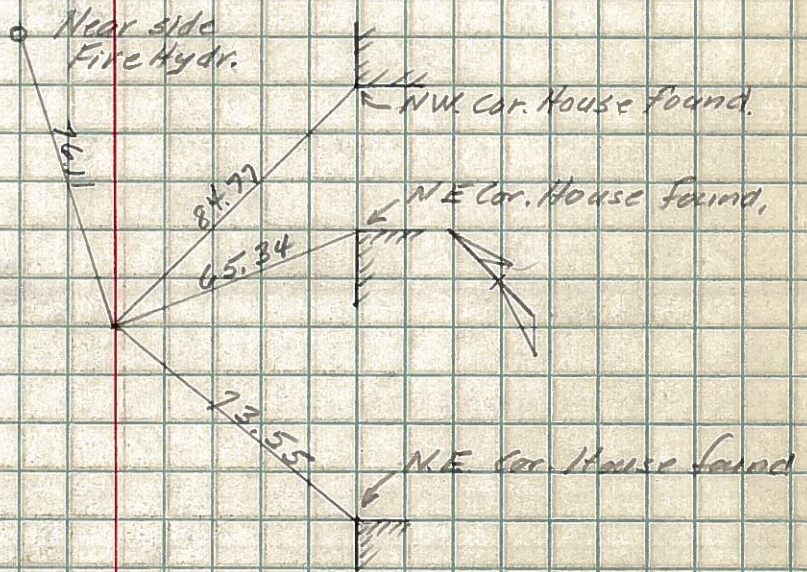
19

P.I. Sta 211+51.17
 $\Delta = 0^\circ - 53' \text{ Rt}$
Monument.



18

P.O.T. Sta 209+95.2
& Lebanon St.
Monument.



17

P.O.T. Sta 208+02.18.
Monument.

