

County Wilkes S.R. #2

Date 27 July 84

Township Pulaski

Weather Cloudy

Section 19

Temp. 70°

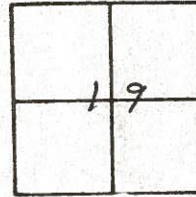
T N, R E

Personnel L. Stone

P. Neuser

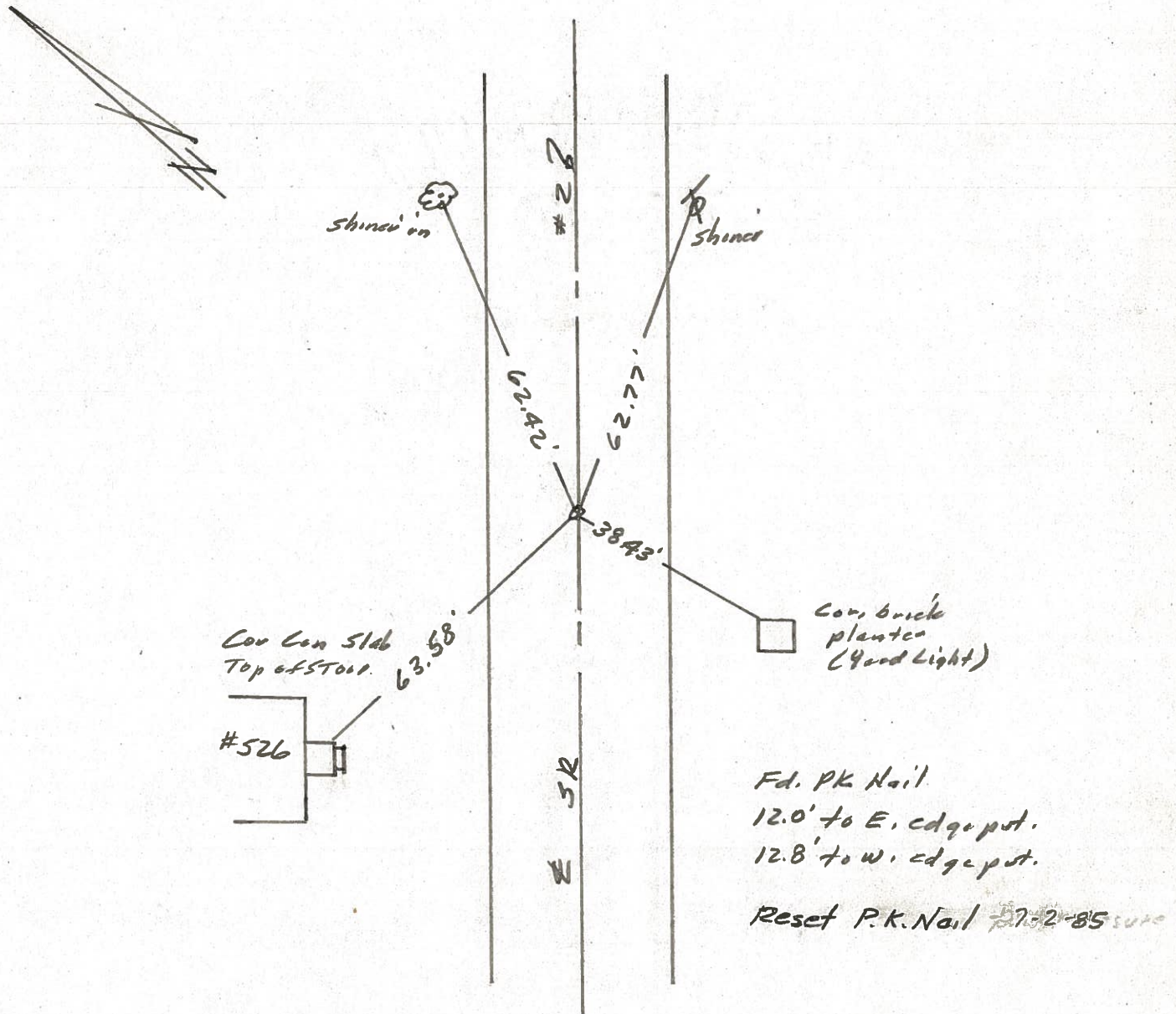
R. Michalak

D. Curtis



SLM STA. 211+57

REF. NO. 35-G



County Williams S.R.2

Date 5-23-79

Township PULASKI

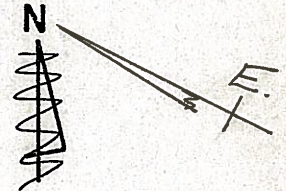
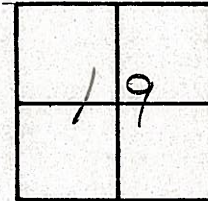
Weather CLEAR

Section 19 BRYAN CORP.

Temp. +76°

T N, R E

Personnel BURNSIDE
SMITH
KNAPE
MEAD



END POINT

CHECK

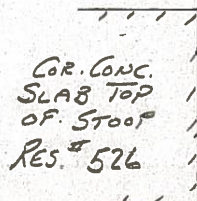
#354

NOBLE DRIVE

Shi. in 42" MAPLE

Shi.

P.I.
STA. 211+51.17
 $\Delta = 0^\circ - 53' RT.$
Fd. P.K. Nail
@ SURFACE



COR. BRICK RES. # 530

100.38

63.58

62.72

62.72

38.49

COR. BRICK PLANTER (YARD LIGHT)



PERSONNEL TITLE PERSONNEL TITLE

Loays

COUNTY Wi.

DATE 7-16-58

Pesselall

S. R. 2

WEATHER Fair

Wise

Williams Center

Krohn

SEC. to Bryan.

TEMP. 75°

DESCRIPTION

Re-check of Witnesses

JOB NO.

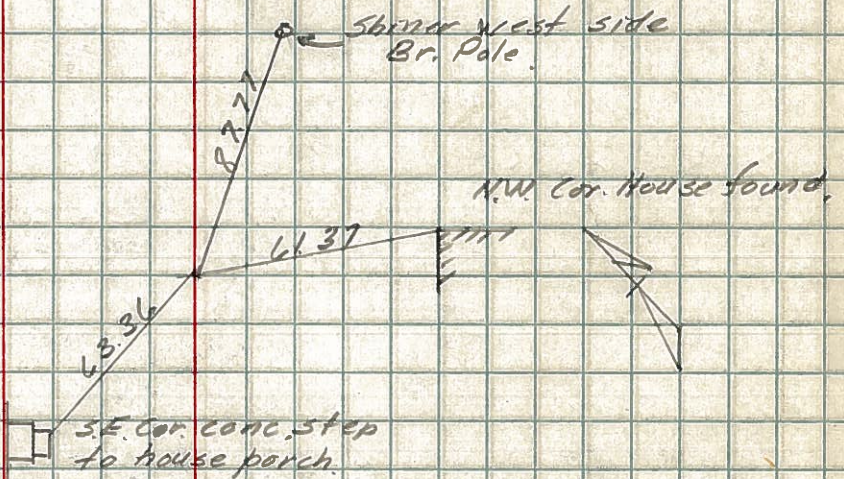
LEFT

CENTER LINE

RIGHT

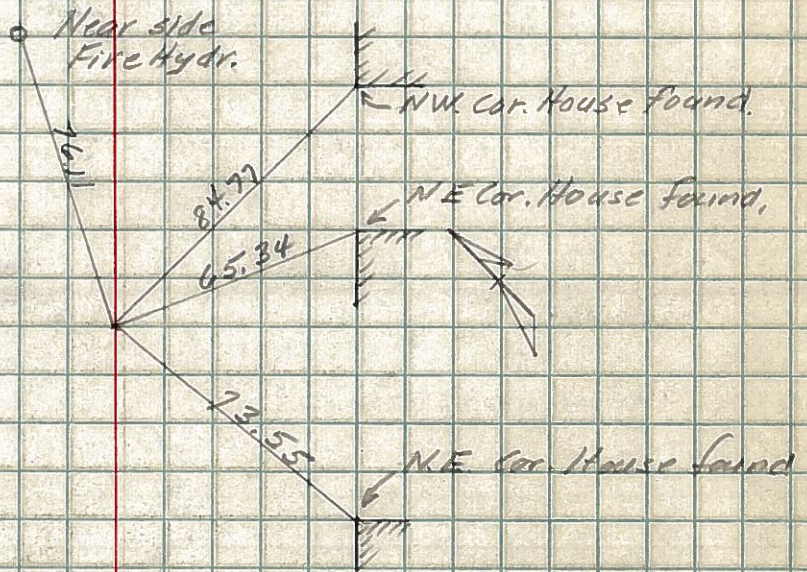
19

P.I. Sta 211+51.17
 $\Delta = 0^\circ - 53' \text{ Rt}$
Monument.



18

P.O.T. Sta 209+95.2
& Lebanon St.
Monument.



17

P.O.T. Sta 208+02.18.
Monument.

