

O.D.O.T. DISTRICT 2 SURVEY OFFICE (USE ONLY)

PERSONNEL

REFERENCE NO. 28 C

SHEET 1 OF 9

NOTES LOEHRKE
 H.C. CANTERBURY
 R.C. HERMILLER
VOGEL

DATE 5/2/94
 WEATHER NICE
 TEMP. 56°

ROUTE SR 2
 COUNTY WILLIAMS
 TOWNSHIP PULASKI
 SECTION 17
T 6 N R 3 E

DWG BY RHOADES PID _____

TYPE MONUMENT BRASS DISK W/CTR.PUNCH

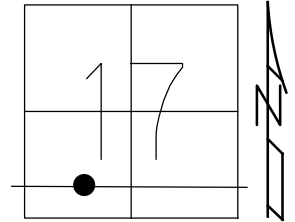
ON SURFACE - ~~BELOW~~ ON

OFFSET \odot PAVEMENT ON _____ LT : RT
 - TO - EDGE PAVEMENT

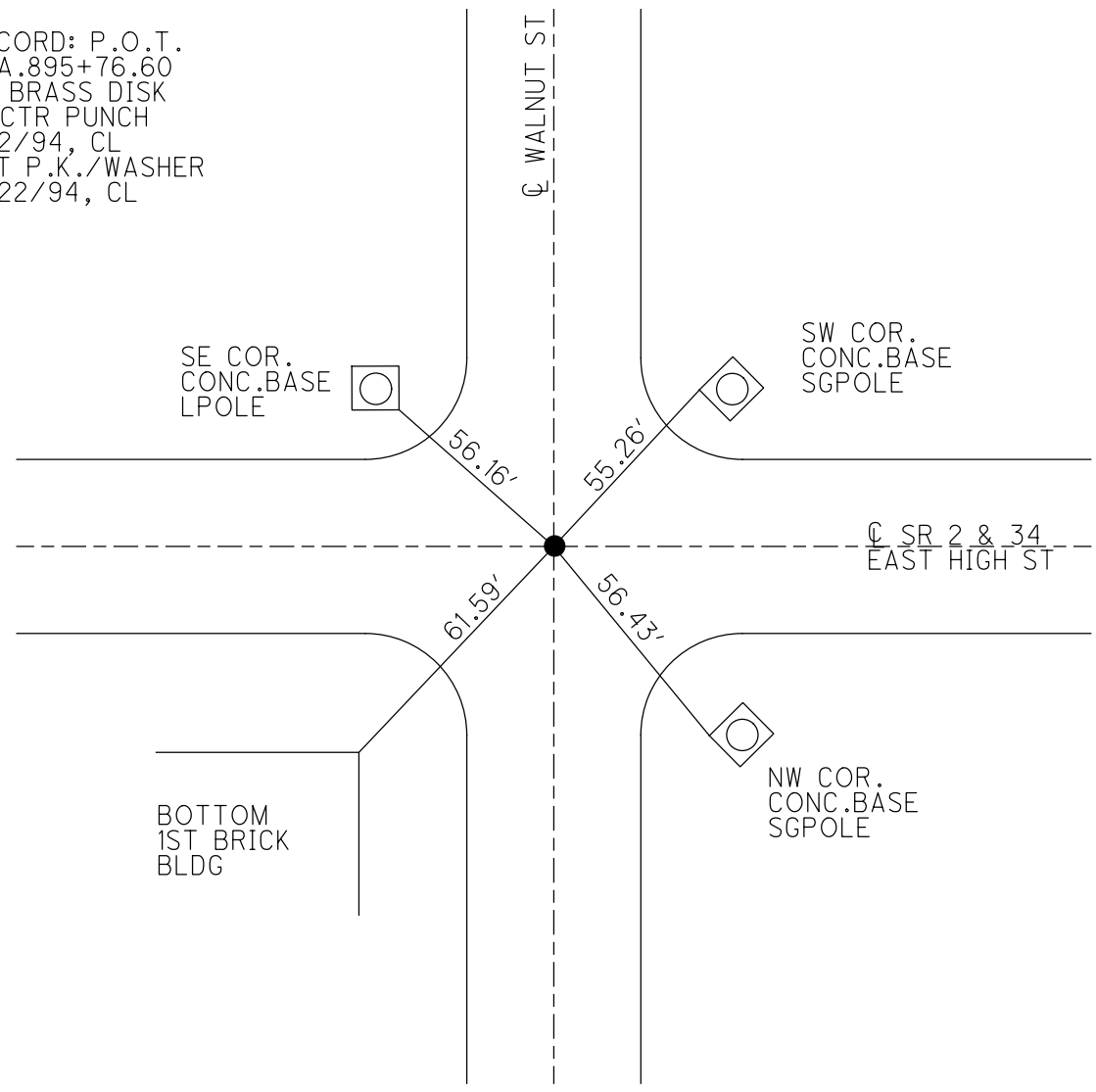
STATION: 318+90

HORZ.DATUM: _____ GEOID: _____

GRID: NORTHING: _____ EASTING: _____



RECORD: P.O.T.
 STA. 895+76.60
 FD BRASS DISK
 W/CTR PUNCH
 5/2/94, CL
 SET P.K./WASHER
 6/22/94, CL



O.D.O.T. DISTRICT 2 SURVEY OFFICE

PERSONNEL

REFERENCE NO. 28c

SHEET 1 OF 24

NOTES LOENRKE

H.C. CANTONBURY

DATE 5-2-94

ROUTE S.R. 2

R.C. HERMILLER

WEATHER Nice

COUNTY WILLIAMS

VOGEL

TEMP. +56

TOWNSHIP PULASKI

SECTION 17

T 6 N R 3 E

Set P.K./WASHER 6-22-94

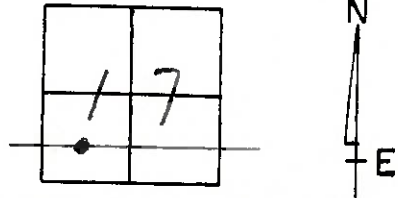
TYPE MONUMENT BRASS Disk w/Ch Punch

ON SURFACE - BELOW Yes

LEFT - & PAV'T. - RIGHT Both

- TO - EDGE PAVEMENT

S.L.M. 318+90



Record:
P.O.T. Sta. 895+76.60

