

O.D.O.T. DISTRICT 2 SURVEY OFFICE (USE ONLY)

PERSONNEL

REFERENCE NO. 28 D

SHEET 2 OF 9

NOTES LOEHRKE

DATE 5/2/94

ROUTE SR 2

H.C. CANTERBURY

WEATHER NICE

COUNTY WILLIAMS

R.C. HERMILLER

TEMP. 56°

TOWNSHIP PULASKI

VOGEL

SECTION 17

DWG BY RHOADES PID _____

T 6 N R 3 E

TYPE MONUMENT 3/8" BRASS IPIN

ON SURFACE - ~~BELOW~~ ON

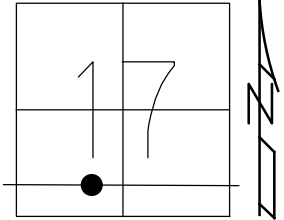
OFFSET \varnothing PAVEMENT ON _____ LT : RT

- TO - EDGE PAVEMENT

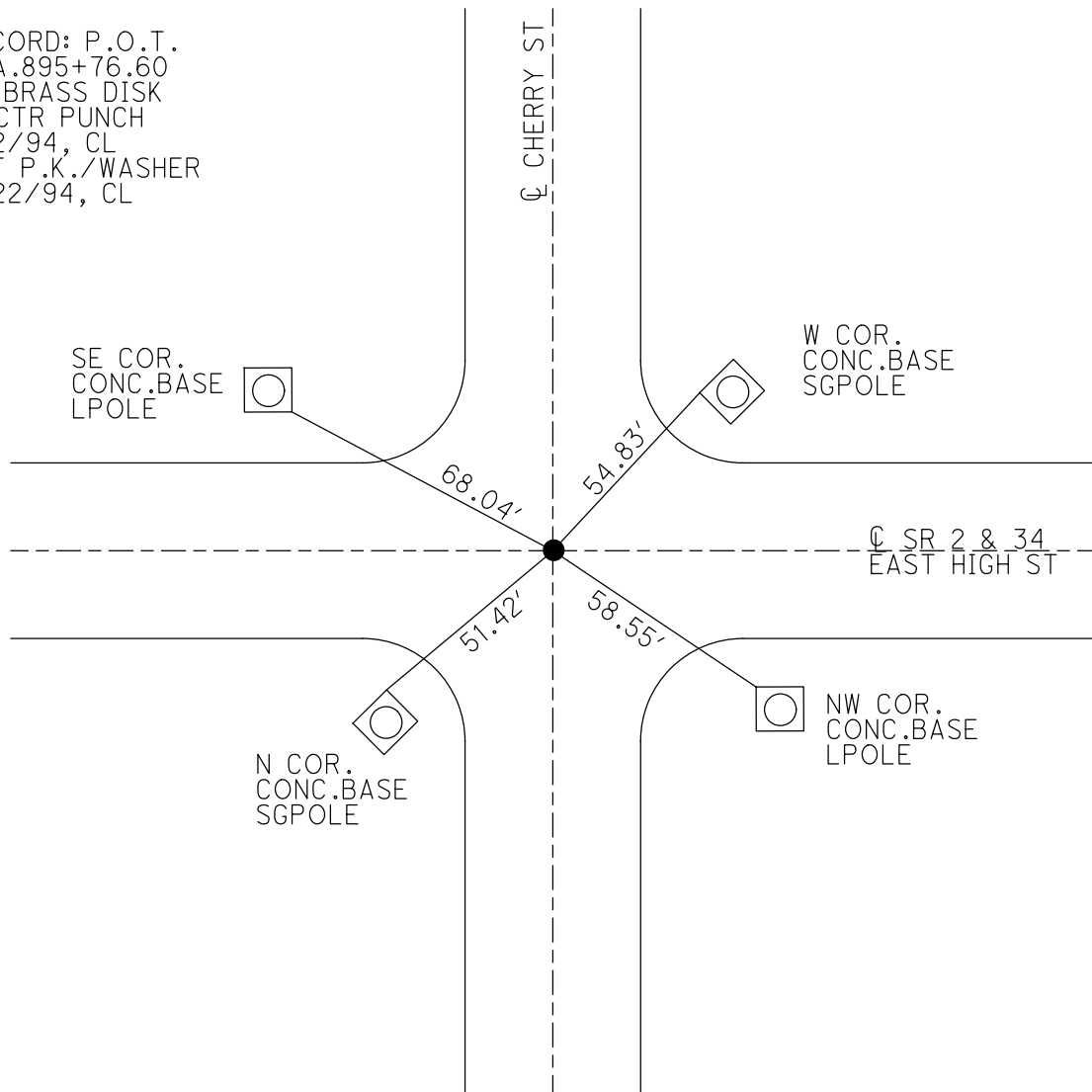
STATION: 322+41

HORIZ.DATUM: _____ GEOID: _____

GRID: NORTHING: _____ EASTING: _____



RECORD: P.O.T.
 STA. 895+76.60
 FD BRASS DISK
 W/CTR PUNCH
 5/2/94, CL
 SET P.K./WASHER
 6/22/94, CL



O.D.O.T. DISTRICT 2 SURVEY OFFICE

PERSONNEL

REFERENCE NO. 28D

SHEET 2 OF 24

NOTES LOENRKE

H.C. CANTERBURY

DATE 5-2-94

ROUTE S.R. 2

R.C. HERMILLER

WEATHER Nice

COUNTY WILLIAMS

VOGEL

TEMP. +56

TOWNSHIP PULASKI

SECTION 17

Set P.K./WASHER
6-22-94

T. 6 N. 3 E.

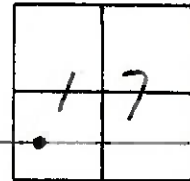
TYPE MONUMENT 3/8" BRASS P.I.U.

ON SURFACE - BELOW Yes

LEFT - & PAV'T. - RIGHT Both

- TO - EDGE PAVEMENT

S.L.M. 322 + 41



Records:
P.O.T. Sta. 899+27.02

