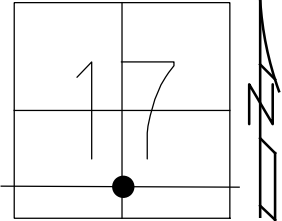


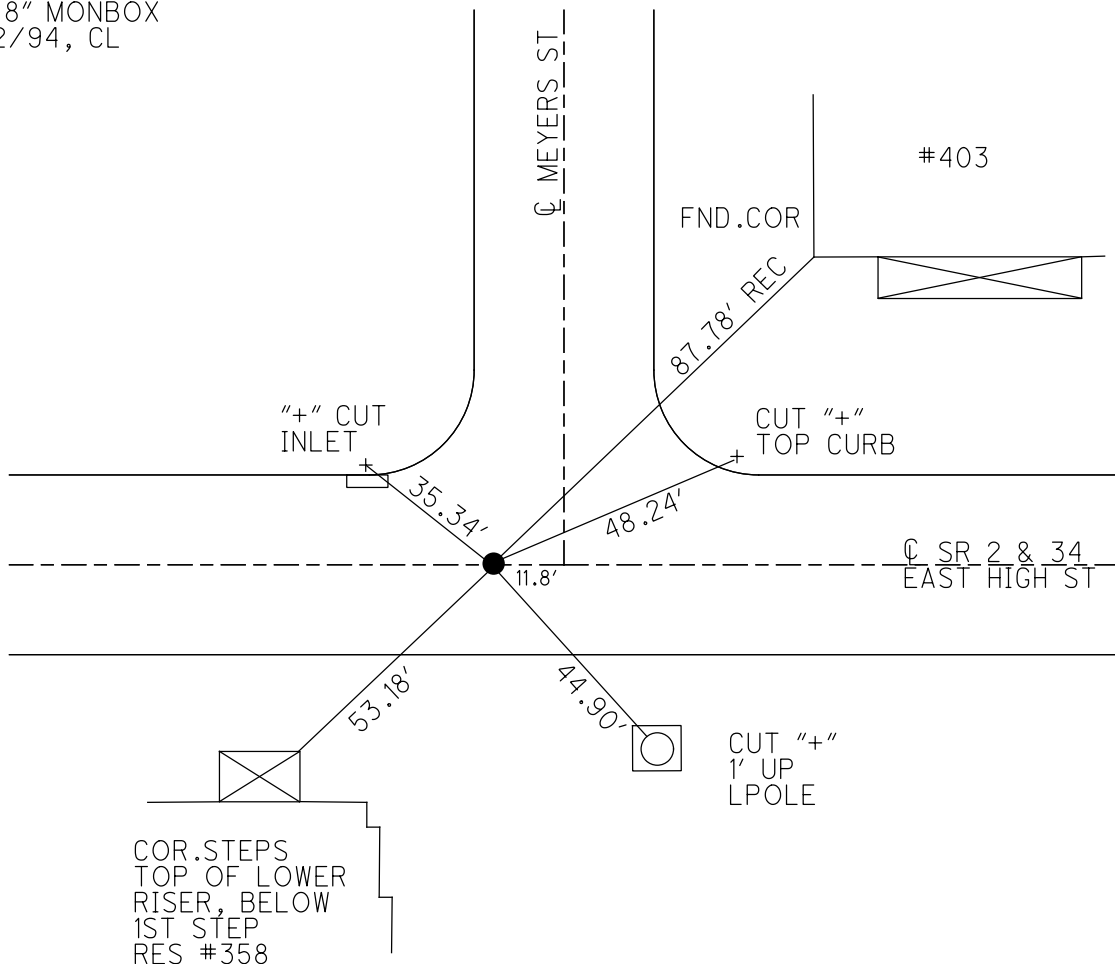
O.D.O.T. DISTRICT 2 SURVEY OFFICE (USE ONLY)

PERSONNEL \_\_\_\_\_ REFERENCE NO. 28 E SHEET 3 OF 9  
 NOTES LOEHRKE DATE 5/2/94 ROUTE SR 2  
 H.C. CANTERBURY WEATHER NICE COUNTY WILLIAMS  
 R.C. HERMILLER TEMP. 56° TOWNSHIP PULASKI  
           VOGEL SECTION 17  
 DWG BY RHOADES PID \_\_\_\_\_ T 6 N R 3 E

TYPE MONUMENT MONBOX  
 ON SURFACE - ~~BELOW~~ ON  
 OFFSET CL PAVEMENT ON LT : RT  
24' TO RT EDGE PAVEMENT  
 STATION: 328+60  
 HORZ.DATUM: \_\_\_\_\_ GEOID: \_\_\_\_\_  
 GRID: NORTHING: \_\_\_\_\_ EASTING: \_\_\_\_\_



RECORD: P.I.  
 STA. 905+45.78  
 FD 8" MONBOX  
 5/2/94, CL



# O.D.O.T. DISTRICT 2 SURVEY OFFICE

PERSONNEL

REFERENCE NO. 28 E SHEET 3 OF 24

NOTES Loehrke

H.C. CANTERBURY

R.C. Hermiller

VOGEL

DATE 5-2-94

WEATHER Nice

TEMP. +58

ROUTE S.R. 2

COUNTY WILLIAMS

TOWNSHIP PULASKI

SECTION 17

T 6 N R 3 E

TYPE MONUMENT 8" DIA Man Box - Raised to surface  
 ON SURFACE - ~~BELOW~~ SURFACE  
 LEFT - C. PAV'T. - RIGHT Yes  
24.0 TO RT EDGE PAVEMENT  
 S.L.M. 328+60

