

O.D.O.T. DISTRICT 2 SURVEY OFFICE (USE ONLY)

PERSONNEL

REFERENCE NO. 28 F

SHEET 4 OF 9

NOTES LOEHRKE DATE 5/2/94
 H.C. CANTERBURY WEATHER NICE
 R.C. HERMILLER TEMP. 56°
VOGEL

ROUTE SR 2
 COUNTY WILLIAMS
 TOWNSHIP PULASKI
 SECTION 17
T 6 N R 3 E

DWG BY RHOADES PID _____

TYPE MONUMENT 3/8" BRASS IPIN

ON SURFACE - BELOW ON

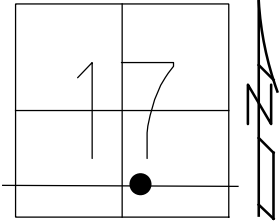
OFFSET Q PAVEMENT ON LT : RT

- TO - EDGE PAVEMENT

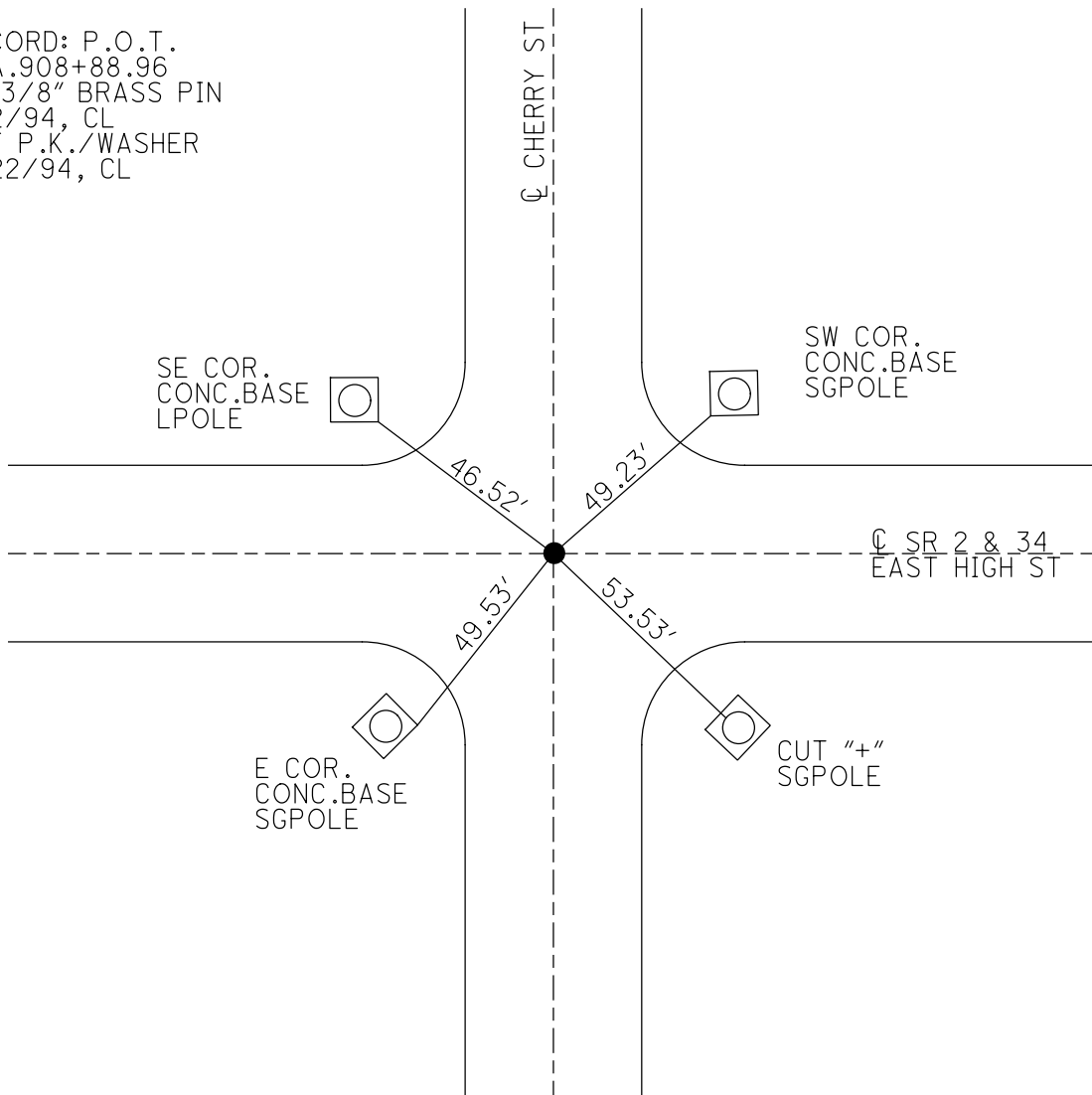
STATION: 332+03

HORZ.DATUM: _____ GEOID: _____

GRID: NORTHING: _____ EASTING: _____



RECORD: P.O.T.
 STA. 908+88.96
 FD 3/8" BRASS PIN
 5/2/94, CL
 SET P.K./WASHER
 6/22/94, CL



O.D.O.T. DISTRICT 2 SURVEY OFFICE

PERSONNEL

REFERENCE NO. 28 F

SHEET 4 OF 24

NOTES LOEHRKE

H.C. CANTERBURY

R.C. HERMILLER

VOGEL

DATE 5-2-94

WEATHER Nice

TEMP. +60

ROUTE S.R. 2

COUNTY WILLIAMS

TOWNSHIP PULASKI

SECTION 17

T 6 N R 3 E

Set P.K./WASHER
6-22-94

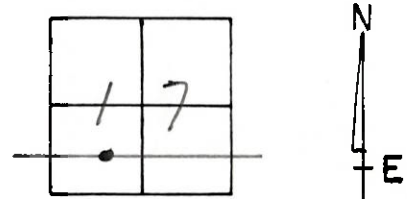
TYPE MONUMENT 3/8" BRASS PIN

ON SURFACE - BELOW Yes

LEFT - & PAV'T. - RIGHT Both

- TO - EDGE PAVEMENT

S.L.M. 332 103



Records:
N P.O.T. Sta. 908+88.96

