

O.D.O.T. DISTRICT 2 SURVEY OFFICE (USE ONLY)

PERSONNEL

REFERENCE NO. 28 H

SHEET 6 OF 9

NOTES LOEHRKE

DATE 5/2/94

ROUTE SR 2

H.C. CANTERBURY

WEATHER NICE

COUNTY WILLIAMS

R.C. HERMILLER

TEMP. 56°

TOWNSHIP PULASKI

VOGEL

SECTION 17

DWG BY RHOADES PID \_\_\_\_\_

T 6 N R 3 E

TYPE MONUMENT 3/8" BRASS IPIN

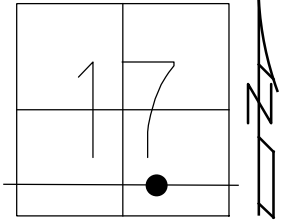
ON SURFACE - ~~BELOW~~ ON

OFFSET Q PAVEMENT ON \_\_\_\_\_ LT : RT  
24' TO RT EDGE PAVEMENT

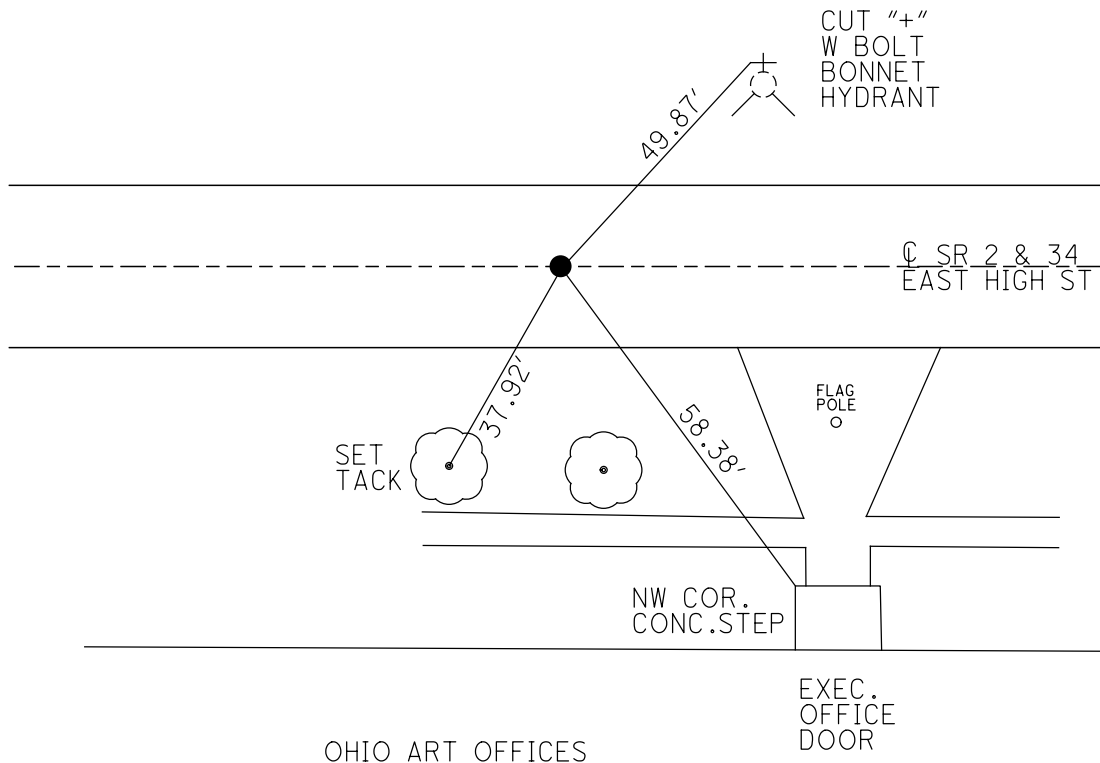
STATION: 341+83

HORZ. DATUM: \_\_\_\_\_ GEOID: \_\_\_\_\_

GRID: NORTHING: \_\_\_\_\_ EASTING: \_\_\_\_\_



RECORD: P.I.  
 STA. 918+69.20  
 FD 3/8" BRASS PIN  
 5/2/94, CL  
 SET P.K./WASHER  
 6/22/94, CL



# O.D.O.T. DISTRICT 2 SURVEY OFFICE

PERSONNEL

REFERENCE NO. 28 H

SHEET 6 OF 24

NOTES Loehrke

H.C. CANTERBURY

R.C. Hermiller

Vogel

DATE 5-2-94

WEATHER Nice

TEMP. +56

Set P.K. / washer  
6-22-94

ROUTE S.R. 2

COUNTY WILLIAMS

TOWNSHIP PULASKI

SECTION 17

T 6 N R 3 E

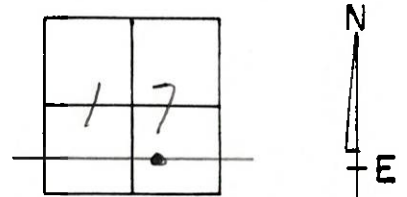
TYPE MONUMENT 3/8" BRASS PIN

ON SURFACE - BELOW Yes

~~LEFT - & PAV'T. - RIGHT~~ Yes

240 TO Rt EDGE PAVEMENT

S.L.M. 34/183



N ± 170' West of N. Lewis St.



Records:  
P.I. sta. 918+69.20

