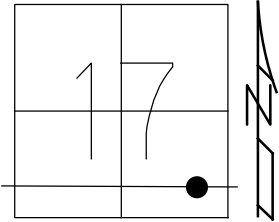


O.D.O.T. DISTRICT 2 SURVEY OFFICE (USE ONLY)

PERSONNEL _____ REFERENCE NO. 28 J SHEET 8 OF 9
 NOTES LOEHRKE DATE 5/2/94 ROUTE SR 2
 H.C. CANTERBURY WEATHER NICE COUNTY WILLIAMS
 R.C. HERMILLER TEMP. 56° TOWNSHIP PULASKI

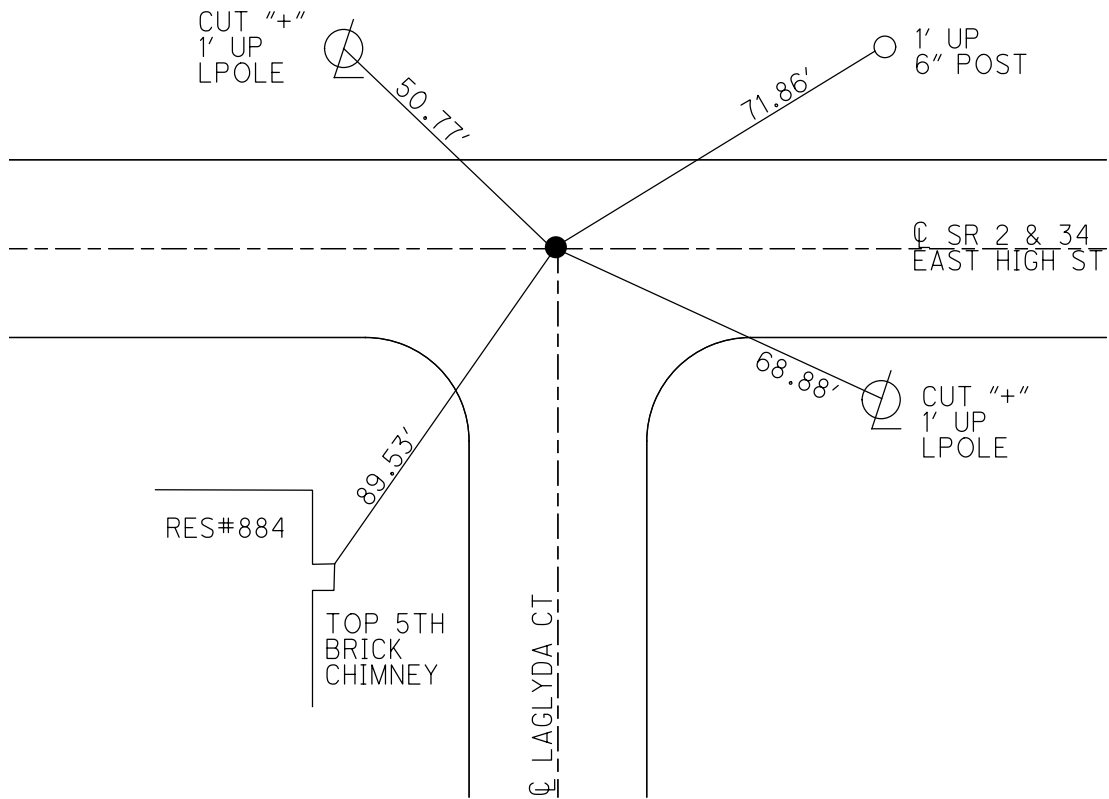
 VOGEL _____
 DWG BY RHOADES PID _____ T 6 N R 3 E

TYPE MONUMENT 3/8" BRASS IPIN
 ON SURFACE - ~~BELOW~~ ON _____
 OFFSET CL PAVEMENT ON _____ LT : RT
23.9' TO LT EDGE PAVEMENT
 STATION: 350+15



HORZ. DATUM: _____ GEOID: _____
 GRID: NORTHING: _____ EASTING: _____

RECORD: P.O.T.
 STA. 927+00.17
 FD 3/8" BRASS PIN
 5/2/94, CL
 SET P.K./WASHER
 6/22/94, CL



O.D.O.T. DISTRICT 2 SURVEY OFFICE

PERSONNEL

REFERENCE NO. 28 J

SHEET 8 OF 24

NOTES LOEHARKE

H.C. CANTERBURY

R.C. HERMILLER

VOGEL

DATE 5-2-94

WEATHER Nice

TEMP. +60

ROUTE S.R. 2

COUNTY WILLIAMS

TOWNSHIP PULASKI

SECTION 17

T. 6 N. R. 3 E

TYPE MONUMENT 3/8" BRASS PIN

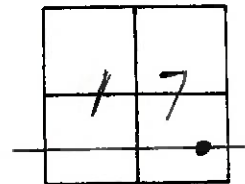
ON SURFACE - BELOW Yes

LEFT - C. PAV'T. - RIGHT Yes

23.9 TO Lt. EDGE PAVEMENT

S.L.M. 350 ± 15

Set P.K. / WASHER
6-22-94



Record:
P.O.T. Sta. 927+00.17

