

O.D.O.T. DISTRICT 2 SURVEY OFFICE (USE ONLY)

PERSONNEL

REFERENCE NO. 28 K

SHEET 9 OF 9

NOTES LOEHRKE

DATE 5/2/94

ROUTE SR 2

H.C. CANTERBURY

WEATHER NICE

COUNTY WILLIAMS

R.C. HERMILLER

TEMP. 56°

TOWNSHIP PULASKI

VOGEL

SECTION 17

DWG BY RHOADES PID \_\_\_\_\_

T 6 N R 3 E

TYPE MONUMENT 3/4" BRASS IPIN

ON SURFACE - ~~BELOW~~ ON \_\_\_\_\_

OFFSET  $\text{C}$  PAVEMENT ON \_\_\_\_\_ LT : RT

\_\_\_\_\_ TO \_\_\_\_\_ EDGE PAVEMENT

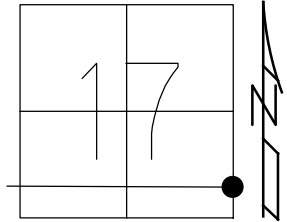
STATION: 355+12

HORZ.DATUM: \_\_\_\_\_

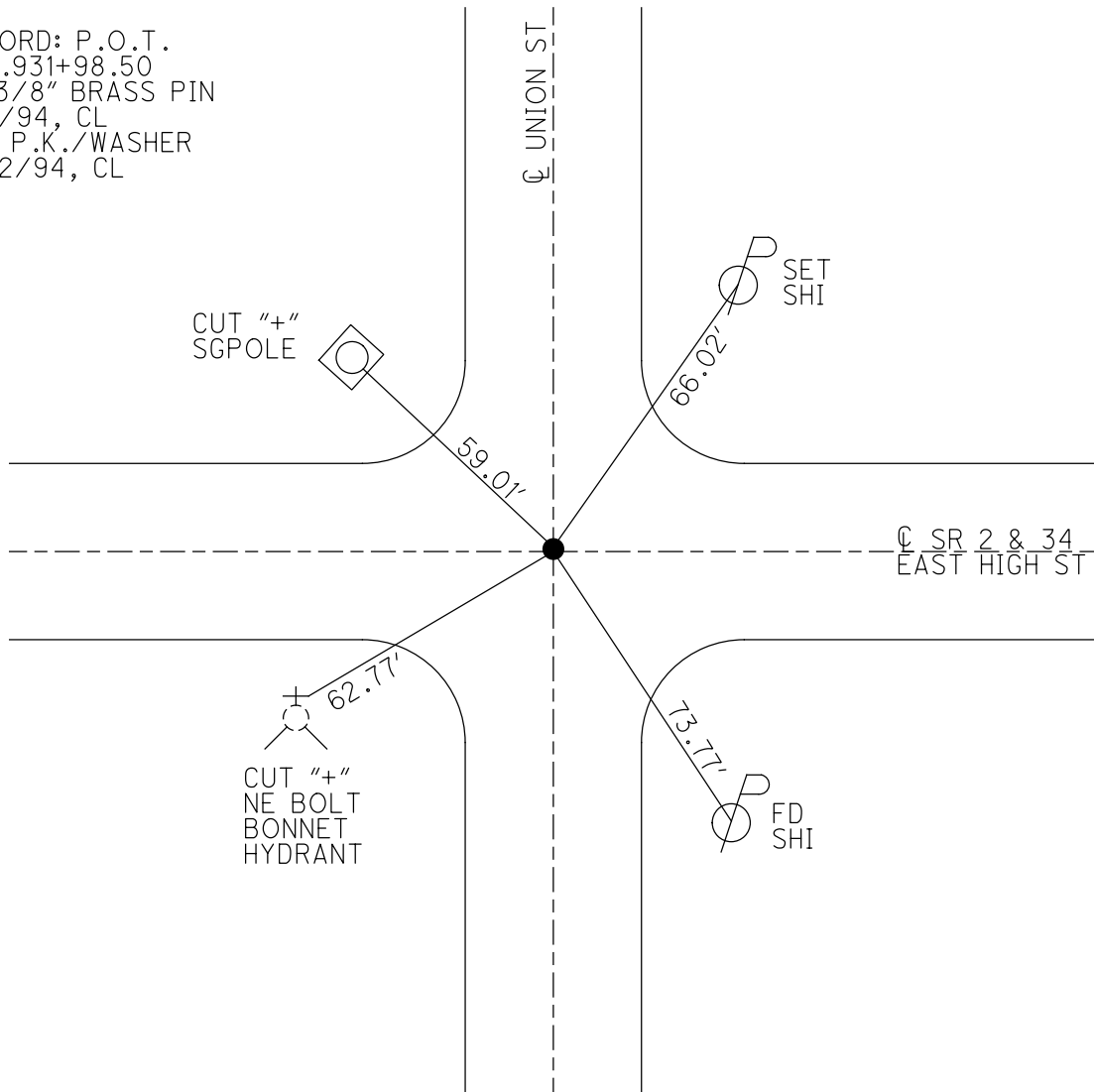
GEOID: \_\_\_\_\_

GRID: NORTHING: \_\_\_\_\_

EASTING: \_\_\_\_\_



RECORD: P.O.T.  
 STA. 931+98.50  
 FD 3/8" BRASS PIN  
 5/2/94, CL  
 SET P.K./WASHER  
 6/22/94, CL



# O.D.O.T. DISTRICT 2 SURVEY OFFICE

PERSONNEL

REFERENCE NO. 28K

SHEET 9 OF 24

NOTES LOENKAC

H.C. CANTERBURY

R.C. HERMILLER

VOGEL

DATE 5-2-94

WEATHER Nice

TEMP. 60

ROUTE S.R. 2

COUNTY WILLIAMS

TOWNSHIP PULASKI

SECTION 17

T 6 N R 3 E

Set P.K./WASHER  
6-22-94

TYPE MONUMENT 3/4" BRASS PIN

ON SURFACE - BELOW Yes

LEFT - PAV'T. - RIGHT Yes

TO EDGE PAVEMENT

S.L.M. 35512

