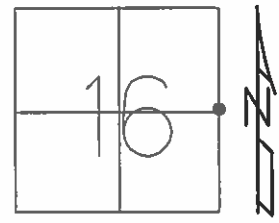


O.D.O.T. DISTRICT 2 SURVEY OFFICE (USE ONLY)

PERSONNEL _____ REFERENCE NO. 31 SHEET 3 OF 17
 NOTES HOMAN DATE 2/6/2013 ROUTE SR 2
 H.C. ROUSOS WEATHER SUNNY COUNTY WILLIAMS
 R.C. HOMAN TEMP. 16° TOWNSHIP PULASKI
 SECTION 16
T 6 N R 3 E

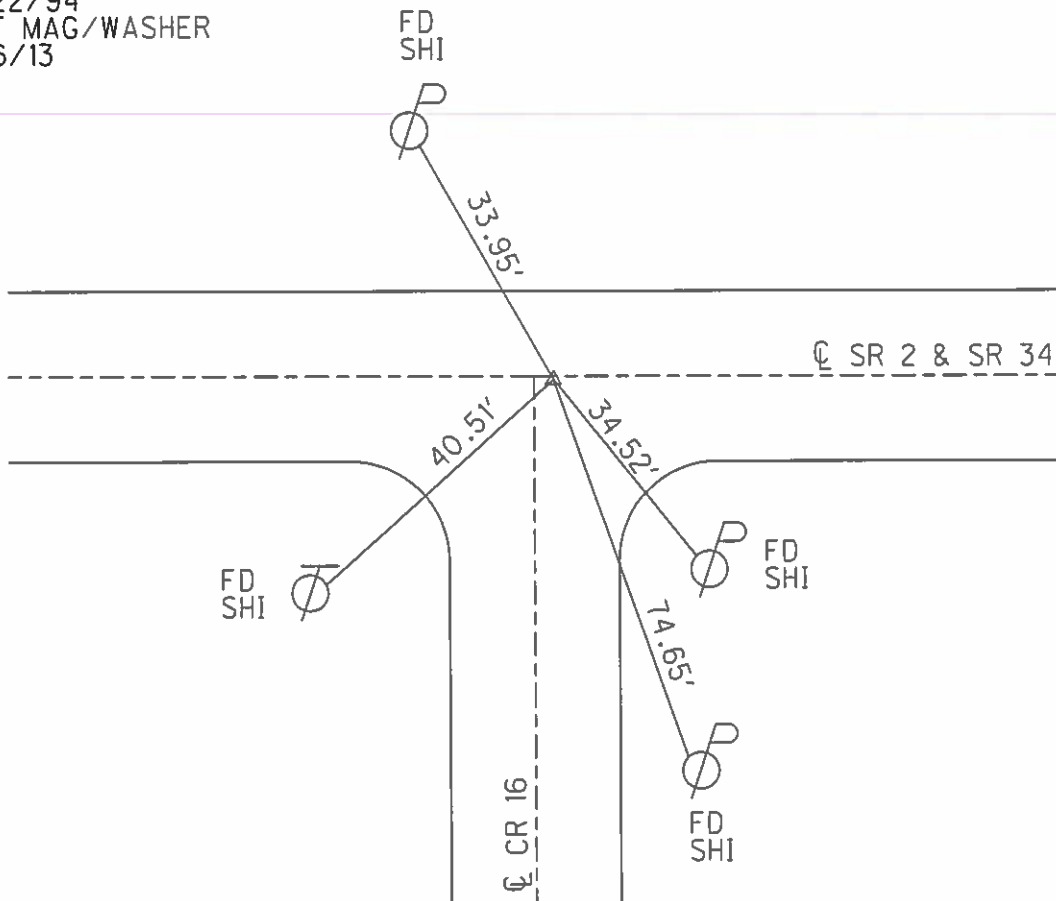
TYPE MONUMENT PK NAIL
 ON SURFACE - ~~BELOW~~ ON
~~LEFT~~ - Q PAV'T - RIGHT 0.2'
12.0' TO LT EDGE PAVEMENT
 S.L.M. 414+17



GRID: NORTHING: 666345.113 EASTING: 1416152.348

RECORD:
 FD LG.R.R.SPIKE
 5/3/94
 SET P.K./WASHER
 6/22/94
 SET MAG/WASHER
 2/6/13

NOTE:
 SR 34 REF38



O.D.O.T. DISTRICT 2 SURVEY OFFICE

PERSONNEL _____

REFERENCE NO. 31

SHEET 11 OF 24

NOTES Loehrke

H.C. CANTERBURY

DATE 5-3-94

ROUTE S.R. 2

R.C. HERMILLER

WEATHER Nice

COUNTY Williams

Vogel

TEMP. +58

TOWNSHIP PULASKI

SECTION 16

T6 N R 3 E

TYPE MONUMENT R.R. Spike

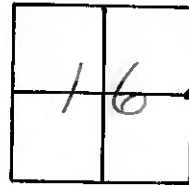
Set PK/washer
6-22-94

~~ON~~ SURFACE - BELOW 2' Deep

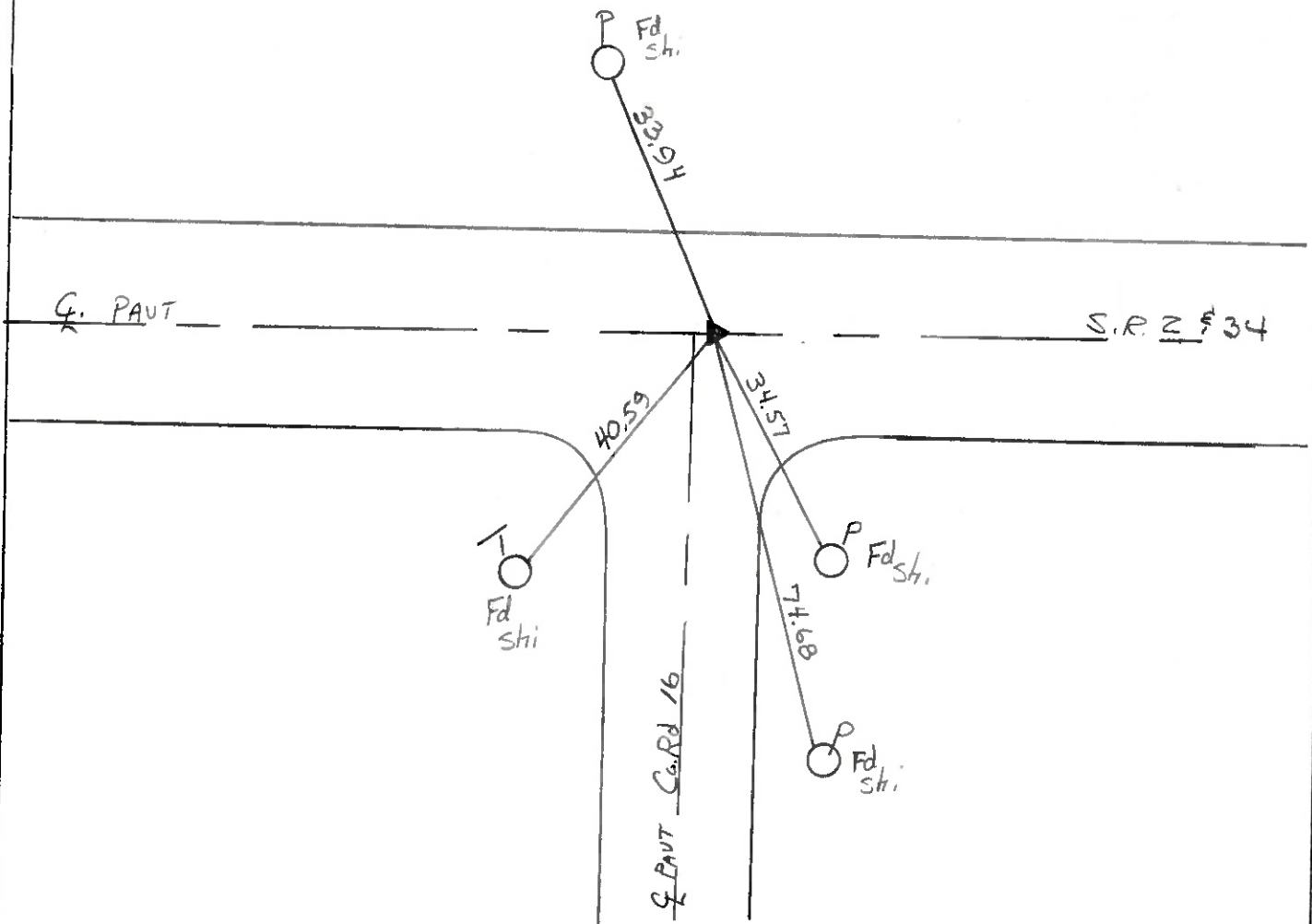
LEFT - 0 PAV'T. - RIGHT 02'

12.0 TO L1 EDGE PAVEMENT

S.L.M. 414+17



Records: 1985
Fd. RR spike 3" Deep



County Williams S.R. #2

Date 27 July 84

Township Poleski

Weather Cloudy

Section 16-15

Temp. 70°

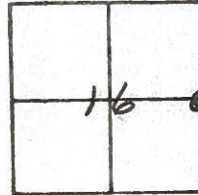
T N, R E

Personnel I. Stone

P. Neuse

R. Michalek

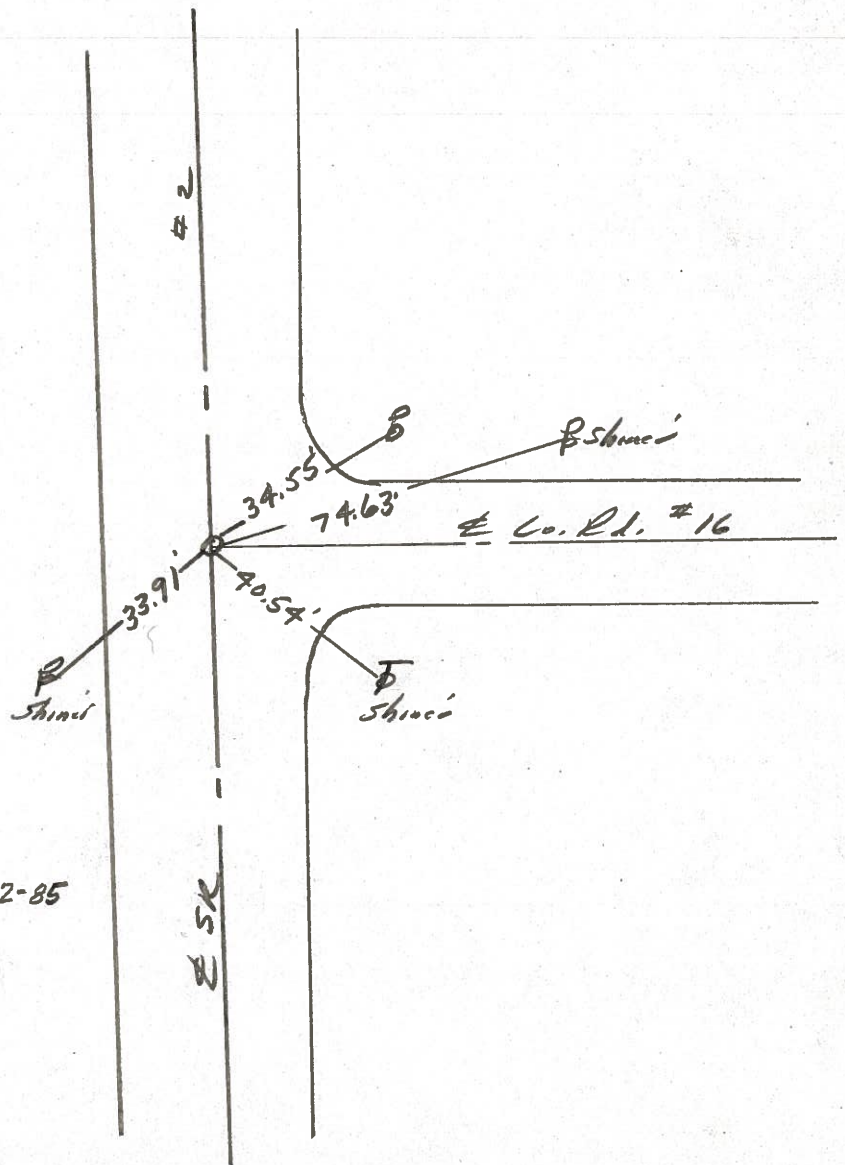
D. Curtis



31

SLM STA. 348+97

REF. No.



Fd. RR Spk. 1" deep
10.5' to N. edge pt.

Fd. RR Spk. 3" deep - 7-2-85