

O.D.O.T. DISTRICT 2 SURVEY OFFICE (USE ONLY)

PERSONNEL _____ REFERENCE NO. 39 A SHEET 5 OF 17
 NOTES HOMAN DATE 2/6/2013 ROUTE SR 2
 H.C. ROUSOS WEATHER SUNNY COUNTY WILLIAMS
 R.C. HOMAN TEMP. 16° TOWNSHIP PULASKI
 _____ SECTION 15
 _____ T 6 N R 3 E

TYPE MONUMENT PK/WASHER

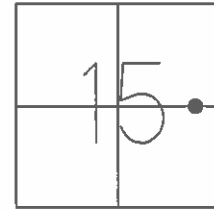
ON SURFACE - ~~BELOW~~ ON _____

~~LEFT~~ - C PAV'T - RIGHT 1.7'

10.2' TO RT EDGE PAVEMENT

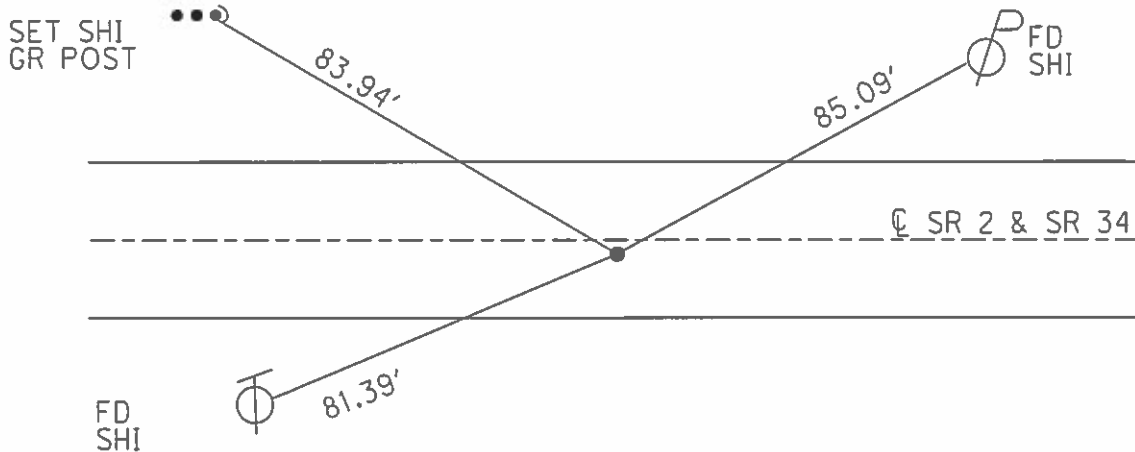
S.L.M. 458+20

GRID: NORTHING: 666256.777 EASTING: 1420552.325



RECORD: P.C.
 STA. 392+77.08
 SET P.K.NAIL
 1985
 FD P.K./WASHER
 5/3/94
 SET P.K./WASHER
 6/22/94
 SET MAG/WASHER
 2/6/13

NOTE:
 SR 34 REF39



O.D.O.T. DISTRICT 2 SURVEY OFFICE

PERSONNEL

REFERENCE NO. 39-A

SHEET 13 OF 24

NOTES LOEHRKE

H.C. CANTERBURY

DATE 5-3-94

ROUTE S.R. 2

R.C. Hermiller

WEATHER Nice

COUNTY Williams

Vogel

TEMP. +78

TOWNSHIP Pulaski

SECTION 15

T6 N R 3 E

Reset

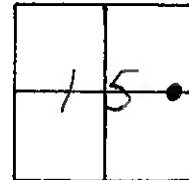
TYPE MONUMENT P.K. / WASHER 6-22-94

ON SURFACE - BELOW Yes

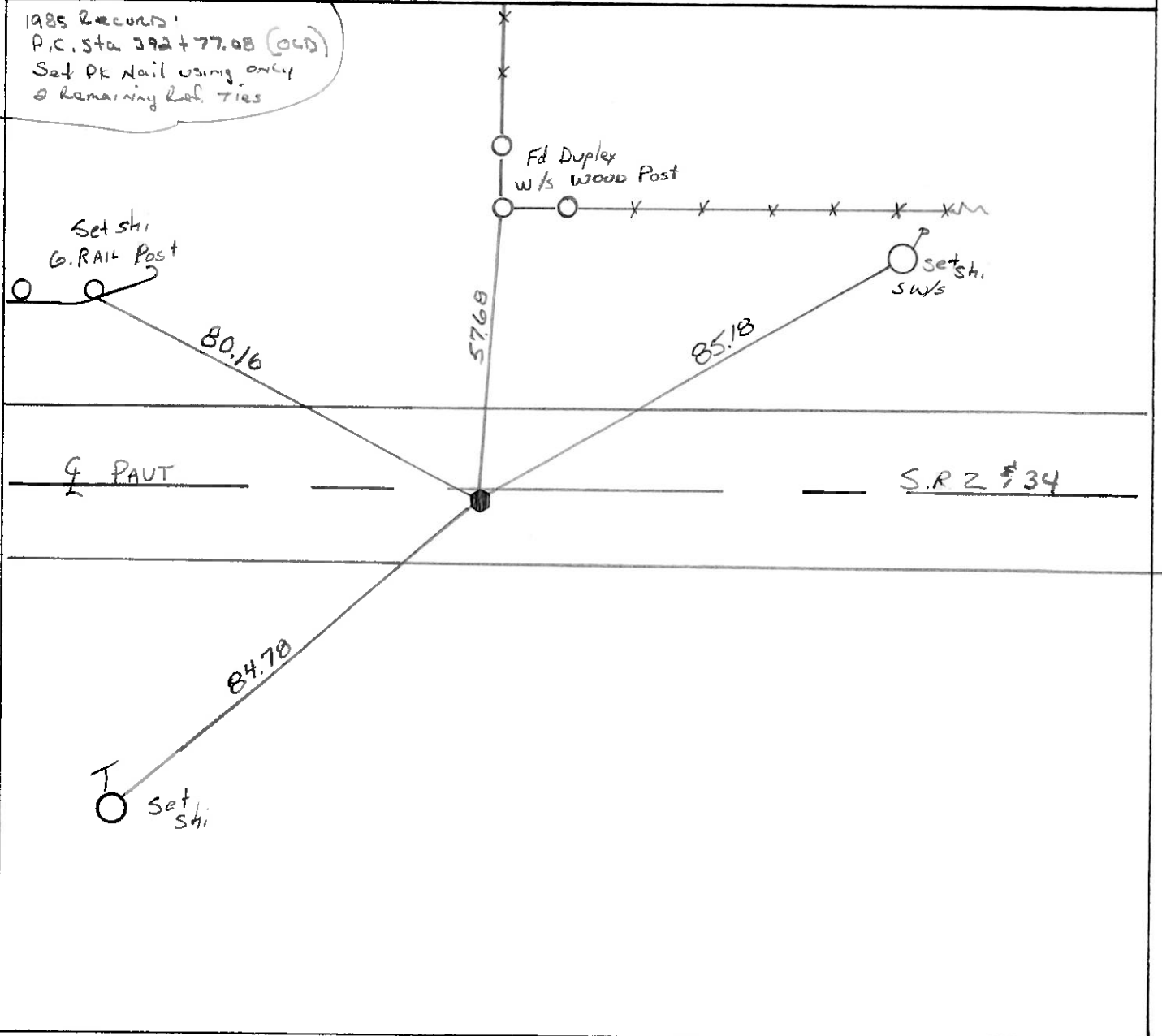
LEFT - Q PAVT. - RIGHT 1.7

10.2 TO Rt EDGE PAVEMENT

S.L.M. 458 +20



1985 Records
P.C. Sta 392 + 77.08 (OLD)
Set PK Nail using only
2 remaining Ref. Ties



County Williams S.R. #2

Date July 84

Township Puleski

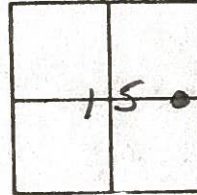
Weather Cloudy

Section 15

Temp. 70°

T_N, R_E

Personnel I. Stone



P. Neusser

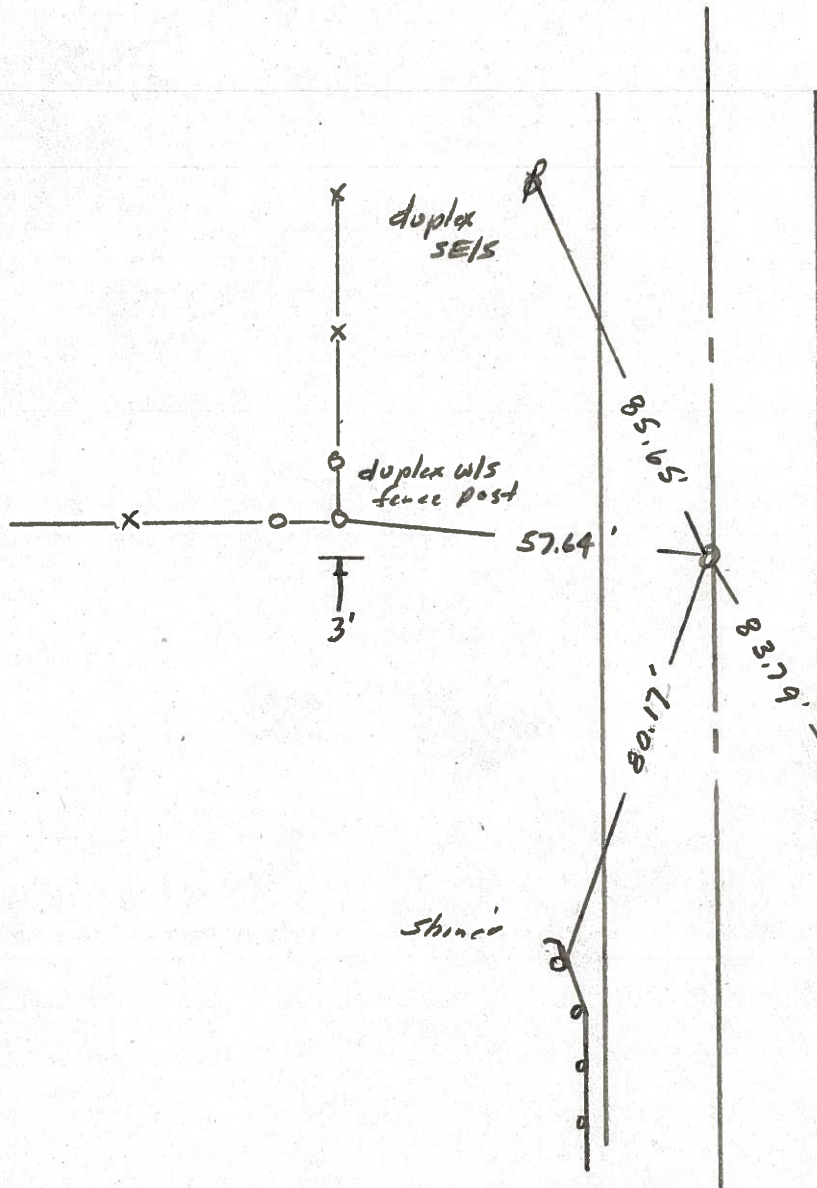
R. Michalak

D. Curtis

39-A

S.L.M. STA. 393+00

REF. NO. 39-A



P.C. Sta. 392+77.08 Cold.
Set P.K. Nail using only
2 remaining duplex nails
as indicated
11.5' to N. edge put.
8.9' to S. edge put.
Shiner
Set P.K. Nail to Surface -
7-2-85

PERSONNEL TITLE PERSONNEL TITLE

Red Beach
W. Knappe

COUNTY Williams DATE 29 Dec. 76

S. R. 2 WEATHER

SEC. Brg WIL-2-0765 TEMP.

DESCRIPTION CONTROL POINTS JOB NO.

