

# O.D.O.T. DISTRICT 2 SURVEY OFFICE

PERSONNEL

REFERENCE NO. 40-A

SHEET 14 OF 24

NOTES Loehrke

H.C. CANTERBURY

DATE 5-3-94

ROUTE S.R. 2

R.C. Hermiller

WEATHER Nice

COUNTY Williams

VOGEL

TEMP. +70

TOWNSHIP Pulaski

SECTION 14

RESET P.K/WASHER  
6-21-94

T 4 N R 3 E

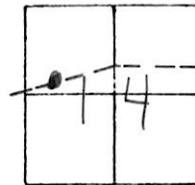
TYPE MONUMENT P.K/WASHER

ON SURFACE - BELOW Yes

LEFT - 0 PAV'T. - RIGHT 0.4'

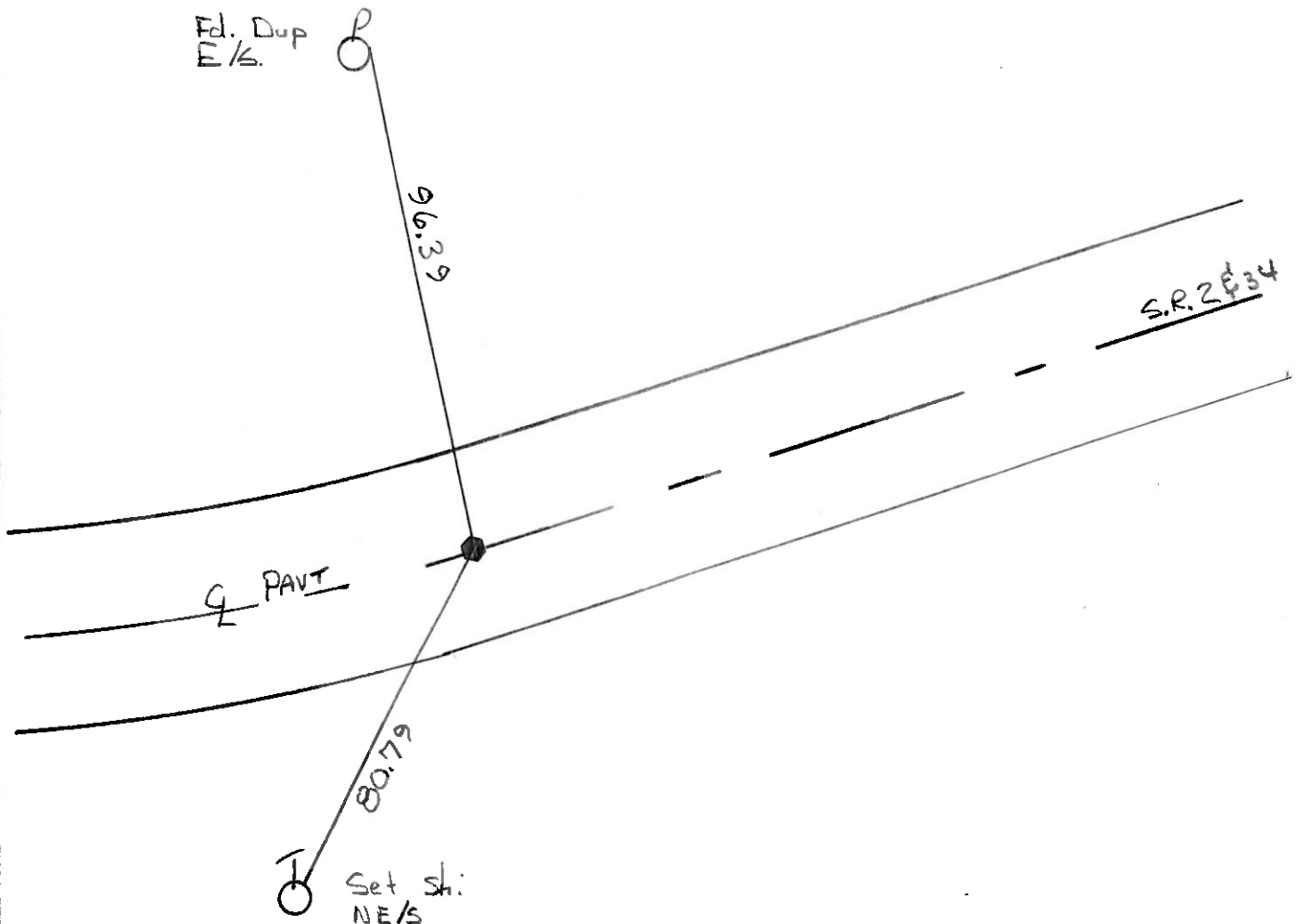
11.7 TO Rt EDGE PAVEMENT

S.L.M. 476+00



Pt is  $\pm 400'$  West Co. Rd. 17.25

1985 Record: P.T. of curve; Rd P.K @ surface



PERSONNEL TITLE PERSONNEL TITLE

Red Beach  
W. Krape

COUNTY Williams

DATE Dec. 1976

S. R. #2

WEATHER

SEC. Bldg WIL-2-0765

TEMP.

DESCRIPTION Alignment in NW 1/4 (Pt.) Sec. 14, Pulaski Twp.

JOB NO.

